

FRI 21 JAN 2022
Start Time: 20:30

Bratislava

Start List

Match No: 53

GER - NOR

Referees: LAH Bojan (SLO) / SOK David (SLO) **EHF Supervisor:** RANCIK Vladimir (SVK)
Reserve Referees: BONAVENTURA Charlotte (FRA) / BONAVENTURA Julie (FRA) **EHF Observer:** COHEN Shlomo (ISR)
Timekeeper: PAPAJ Patrik (SVK)
Scorekeeper: NAGY Maros (SVK)

GER - Germany

| No. | Name | Pos. | Height m | Int. Matches | | Competition Statistics | | | | | | | | | |
|--|---------------------|------|-------------|-------------------|----|------------------------|----|-----|----|------|----|---|-----|---|--|
| | | | | MP | G | MP | G | 7mG | YC | 2Min | RC | S | 7mS | | |
| 1 | BITTER Johannes | GK | 2.05 | 2 | 0 | 2 | | | | | | | 14 | 1 | |
| 45 | REBMANN Daniel | GK | 1.90 | 1 | 0 | 1 | | | | | | | 5 | | |
| 4 | GOLLA Johannes (C) | P | 1.95 | 4 | 17 | 4 | 17 | | 1 | 2 | | | | | |
| 7 | WIENCEK Patrick | P | 2.00 | 4 | 4 | 4 | 4 | | | 6 | 1 | | | | |
| 9 | REICHMANN Tobias | RB | 1.88 | 1 | 2 | 1 | 2 | 2 | | | | | | | |
| 10 | WIEDE Fabian | RB | 1.94 | 2 | 1 | 2 | 1 | | | | | | | | |
| 17 | ZERBE Lukas | RW | 1.84 | 3 | 5 | 3 | 5 | | | | | | | | |
| 18 | KOSTER Julian | LB | 2.00 | 4 | 9 | 4 | 9 | | | | | | | | |
| 20 | WEBER Philipp | CB | 1.94 | 4 | 8 | 4 | 8 | | | | | | | | |
| 34 | DAHMKKE Rune | LW | 1.89 | 2 | 2 | 2 | 2 | | | | | | | | |
| 39 | STUTZKE Lukas | LB | 1.96 | 1 | 2 | 1 | 2 | | | | | | | | |
| 40 | ERNST Simon | CB | 1.96 | 4 | 1 | 4 | 1 | | | | 1 | | | | |
| 44 | STEINERT Christoph | RB | 1.96 | 4 | 17 | 4 | 17 | 7 | 1 | 3 | | | | | |
| 77 | SCHMIDT David | RB | 1.90 | 1 | 0 | 1 | | | | | | | | | |
| 93 | ZIEKER Patrick | LW | 1.86 | 1 | 4 | 1 | 4 | | | | | | | | |
| 95 | DRUX Paul | LB | 1.92 | 2 | 0 | 2 | | | | | | | | | |
| (I) | WOLFF Andreas | GK | 1.98 | 2 | 0 | 2 | | | | | | 6 | 1 | | |
| (I) | HAFNER Kai | RB | 1.92 | 2 | 11 | 2 | 11 | | | | | | | | |
| (I) | FIRNHABER Sebastian | P | 2.00 | 1 | 0 | 1 | | | | | | | | | |
| (I) | KUHN Julius | LB | 1.98 | 1 | 6 | 1 | 6 | | | | 1 | | | | |
| Headcoach GISLASON Alfred (ISL) | | | | Bench/Team | | | | | | | | | | | |

| GER Played | | |
|------------|-----|---------|
| PR | BLR | 33 - 29 |
| PR | AUT | 34 - 29 |
| PR | POL | 30 - 23 |
| MR | ESP | 23 - 29 |
| MR | NOR | 21 JAN |
| MR | SWE | 23 JAN |
| MR | RUS | 25 JAN |

NOR - Norway

| No. | Name | Pos. | Height m | Int. Matches | | Competition Statistics | | | | | | | | | |
|----------------------------------|--------------------------|------|-------------|-------------------|-----|------------------------|----|-----|----|------|----|---|-----|---|--|
| | | | | MP | G | MP | G | 7mG | YC | 2Min | RC | S | 7mS | | |
| 12 | SAEVERAAS Kristian | GK | 1.94 | 43 | 2 | 4 | | | | | | | 25 | 1 | |
| 30 | BERGERUD Torbjørn Sitrup | GK | 1.99 | 110 | 0 | 3 | | | | | | | 16 | | |
| 3 | AGA Vette Eck | CB | 1.93 | 9 | 2 | 4 | | | | | 1 | | | | |
| 5 | SAGOSEN Sander | CB | 1.95 | 132 | 678 | 4 | 23 | 4 | 1 | 2 | | | | | |
| 6 | BARTHOLD Sebastian | LW | 1.84 | 42 | 84 | 4 | 28 | 13 | | 1 | | | | | |
| 7 | OVERJORDET Sander | CB | 1.91 | 26 | 19 | 3 | 6 | | | | | | | | |
| 11 | OVERBY Petter | P | 2.00 | 97 | 75 | 4 | 3 | | | 2 | | | | | |
| 13 | TOFT Erik Thorsteinsen | LB | 1.92 | 8 | 17 | 4 | 9 | | | | 1 | | | | |
| 15 | TONNESEN Kent Robin | RB | 1.94 | 124 | 318 | 4 | 8 | | | 2 | | | | | |
| 19 | BJORNSEN Kristian | RW | 1.91 | 154 | 578 | 4 | 13 | | | | | | | | |
| 21 | GULLERUD Magnus | P | 1.94 | 151 | 199 | 4 | 8 | | 2 | 3 | | | | | |
| 24 | O'SULLIVAN Christian (C) | CB | 1.90 | 147 | 233 | 4 | 3 | | 1 | 3 | | | | | |
| 27 | REINKIND Harald | RB | 1.97 | 132 | 278 | 4 | 10 | | | | | | | | |
| 32 | SOLSTAD Thomas | P | 1.94 | 15 | 16 | 4 | 6 | | | | | | | | |
| 44 | GULLIKSEN Kevin Maageroe | RW | 1.80 | 62 | 118 | 4 | 10 | | | | | | | | |
| 71 | BLONZ Alexandre | LW | 1.87 | 47 | 90 | 4 | 6 | | | | 2 | | | | |
| (I) | HEIEREN Sander Drange | GK | 1.90 | 3 | 0 | 1 | | | | | | 2 | 2 | | |
| (I) | PETTERSEN Simen Holand | LB | 1.88 | 13 | 23 | 1 | 1 | | | | | | | | |
| (I) | RAMBO Christoffer | RB | 2.00 | 98 | 218 | | | | | | | | | | |
| Headcoach BERGE Christian | | | | Bench/Team | | | | | | | | | | | |

| NOR Played | | |
|------------|-----|---------|
| PR | SVK | 35 - 25 |
| PR | RUS | 22 - 23 |
| PR | LTU | 35 - 29 |
| MR | POL | 42 - 31 |
| MR | GER | 21 JAN |
| MR | ESP | 23 JAN |
| MR | SWE | 25 JAN |



MEN'S EUROPEAN HANDBALL CHAMPIONSHIP
EHF EURO 2022

Main Round Group II



MEN'S EHF EURO 2022
HUNGARY · SLOVAKIA

FRI 21 JAN 2022
Start Time: 20:30

Start List
Match No: 53

Bratislava

Legend:

| | | | | | | | |
|-------------|----------------------|------------|---------------|------------|---------------|------------|-------------|
| 2Min | 2-Minute Suspensions | 7mG | 7-metre Goals | 7mS | 7-metre Saves | CB | Centre Back |
| G | Goals | GK | Goalkeeper | LB | Left Back | LW | Left Wing |
| MP | Matches Played | MR | Main Round | P | Pivot | Pos | Position |
| PR | Preliminary Round | RB | Right Back | RC | Red Cards | RW | Right Wing |
| S | Saves | YC | Yellow Cards | | | | |

Match No: 53

GER 23 - 28 NOR

GER - Germany

| Lineup efficiency | | | | | | | Time Played | GF | GA |
|-------------------|---------------|---------------|---------------|---------------|---------------|---------------|-------------|----|----|
| 1 BITTER J | 4 GOLLA J | 17 ZERBE L | 18 KOSTER J | 20 WEBER P | 44 STEINERT C | 93 ZIEKER P | 5:29 | 4 | 0 |
| 4 GOLLA J | 7 WIENCEK P | 9 REICHMANN T | 10 WIEDE F | 18 KOSTER J | 45 REBMANN D | 93 ZIEKER P | 4:55 | 1 | 4 |
| 1 BITTER J | 4 GOLLA J | 17 ZERBE L | 18 KOSTER J | 40 ERNST S | 44 STEINERT C | 93 ZIEKER P | 4:07 | 0 | 3 |
| 1 BITTER J | 7 WIENCEK P | 17 ZERBE L | 18 KOSTER J | 39 STUTZKE L | 77 SCHMIDT D | 93 ZIEKER P | 3:54 | 1 | 1 |
| 1 BITTER J | 7 WIENCEK P | 9 REICHMANN T | 10 WIEDE F | 40 ERNST S | 93 ZIEKER P | 95 DRUX P | 3:36 | 1 | 2 |
| 1 BITTER J | 4 GOLLA J | 17 ZERBE L | 20 WEBER P | 44 STEINERT C | 93 ZIEKER P | 95 DRUX P | 2:48 | 1 | 1 |
| 1 BITTER J | 4 GOLLA J | 9 REICHMANN T | 18 KOSTER J | 20 WEBER P | 44 STEINERT C | 93 ZIEKER P | 2:32 | 2 | 2 |
| 4 GOLLA J | 7 WIENCEK P | 9 REICHMANN T | 10 WIEDE F | 20 WEBER P | 45 REBMANN D | 93 ZIEKER P | 2:32 | 2 | 0 |
| 1 BITTER J | 4 GOLLA J | 17 ZERBE L | 18 KOSTER J | 20 WEBER P | 40 ERNST S | 44 STEINERT C | 2:29 | 1 | 1 |
| 1 BITTER J | 7 WIENCEK P | 17 ZERBE L | 18 KOSTER J | 40 ERNST S | 77 SCHMIDT D | 93 ZIEKER P | 2:29 | 3 | 3 |
| 1 BITTER J | 4 GOLLA J | 17 ZERBE L | 40 ERNST S | 44 STEINERT C | 93 ZIEKER P | 95 DRUX P | 2:28 | 0 | 2 |
| 1 BITTER J | 4 GOLLA J | 9 REICHMANN T | 18 KOSTER J | 40 ERNST S | 44 STEINERT C | 93 ZIEKER P | 2:28 | 0 | 2 |
| 1 BITTER J | 4 GOLLA J | 7 WIENCEK P | 9 REICHMANN T | 10 WIEDE F | 93 ZIEKER P | 95 DRUX P | 1:45 | 1 | 1 |
| 4 GOLLA J | 9 REICHMANN T | 18 KOSTER J | 39 STUTZKE L | 44 STEINERT C | 45 REBMANN D | 93 ZIEKER P | 1:32 | 0 | 0 |
| 1 BITTER J | 7 WIENCEK P | 17 ZERBE L | 20 WEBER P | 39 STUTZKE L | 77 SCHMIDT D | 93 ZIEKER P | 1:24 | 0 | 0 |
| 4 GOLLA J | 7 WIENCEK P | 9 REICHMANN T | 10 WIEDE F | 39 STUTZKE L | 93 ZIEKER P | 95 DRUX P | 1:23 | 1 | 0 |
| 4 GOLLA J | 7 WIENCEK P | 9 REICHMANN T | 18 KOSTER J | 44 STEINERT C | 45 REBMANN D | 93 ZIEKER P | 1:18 | 1 | 0 |
| 4 GOLLA J | 9 REICHMANN T | 18 KOSTER J | 20 WEBER P | 44 STEINERT C | 45 REBMANN D | 93 ZIEKER P | 1:10 | 1 | 1 |
| 4 GOLLA J | 7 WIENCEK P | 9 REICHMANN T | 10 WIEDE F | 39 STUTZKE L | 45 REBMANN D | 93 ZIEKER P | 1:08 | 0 | 1 |
| 4 GOLLA J | 7 WIENCEK P | 9 REICHMANN T | 10 WIEDE F | 18 KOSTER J | 39 STUTZKE L | 93 ZIEKER P | 0:57 | 0 | 0 |
| 1 BITTER J | 4 GOLLA J | 7 WIENCEK P | 17 ZERBE L | 40 ERNST S | 77 SCHMIDT D | 93 ZIEKER P | 0:53 | 1 | 1 |
| 1 BITTER J | 4 GOLLA J | 18 KOSTER J | 20 WEBER P | 40 ERNST S | 44 STEINERT C | 93 ZIEKER P | 0:49 | 0 | 0 |
| 7 WIENCEK P | 9 REICHMANN T | 18 KOSTER J | 39 STUTZKE L | 44 STEINERT C | 45 REBMANN D | 93 ZIEKER P | 0:49 | 0 | 0 |
| 4 GOLLA J | 7 WIENCEK P | 9 REICHMANN T | 18 KOSTER J | 20 WEBER P | 44 STEINERT C | 93 ZIEKER P | 0:45 | 0 | 0 |
| 4 GOLLA J | 17 ZERBE L | 18 KOSTER J | 20 WEBER P | 77 SCHMIDT D | 93 ZIEKER P | 95 DRUX P | 0:43 | 0 | 0 |
| 4 GOLLA J | 9 REICHMANN T | 18 KOSTER J | 40 ERNST S | 44 STEINERT C | 45 REBMANN D | 93 ZIEKER P | 0:42 | 0 | 0 |
| 1 BITTER J | 4 GOLLA J | 7 WIENCEK P | 17 ZERBE L | 18 KOSTER J | 77 SCHMIDT D | 93 ZIEKER P | 0:41 | 0 | 1 |
| 1 BITTER J | 4 GOLLA J | 17 ZERBE L | 18 KOSTER J | 20 WEBER P | 77 SCHMIDT D | 95 DRUX P | 0:40 | 0 | 0 |
| 1 BITTER J | 4 GOLLA J | 7 WIENCEK P | 17 ZERBE L | 20 WEBER P | 77 SCHMIDT D | 93 ZIEKER P | 0:40 | 1 | 0 |
| 1 BITTER J | 4 GOLLA J | 17 ZERBE L | 20 WEBER P | 40 ERNST S | 44 STEINERT C | 95 DRUX P | 0:30 | 0 | 1 |
| 7 WIENCEK P | 9 REICHMANN T | 10 WIEDE F | 18 KOSTER J | 45 REBMANN D | 77 SCHMIDT D | 93 ZIEKER P | 0:28 | 0 | 0 |
| 4 GOLLA J | 7 WIENCEK P | 18 KOSTER J | 20 WEBER P | 44 STEINERT C | 45 REBMANN D | 93 ZIEKER P | 0:28 | 0 | 1 |
| 1 BITTER J | 4 GOLLA J | 17 ZERBE L | 40 ERNST S | 77 SCHMIDT D | 93 ZIEKER P | 95 DRUX P | 0:27 | 0 | 0 |
| 1 BITTER J | 7 WIENCEK P | 9 REICHMANN T | 10 WIEDE F | 39 STUTZKE L | 93 ZIEKER P | 95 DRUX P | 0:17 | 1 | 0 |
| 1 BITTER J | 4 GOLLA J | 7 WIENCEK P | 10 WIEDE F | 39 STUTZKE L | 93 ZIEKER P | 95 DRUX P | 0:13 | 0 | 0 |
| 1 BITTER J | 4 GOLLA J | 17 ZERBE L | 18 KOSTER J | 20 WEBER P | 40 ERNST S | 77 SCHMIDT D | 0:12 | 0 | 0 |
| 7 WIENCEK P | 9 REICHMANN T | 10 WIEDE F | 18 KOSTER J | 20 WEBER P | 45 REBMANN D | 93 ZIEKER P | 0:10 | 0 | 0 |
| 1 BITTER J | 4 GOLLA J | 17 ZERBE L | 20 WEBER P | 77 SCHMIDT D | 93 ZIEKER P | 95 DRUX P | 0:06 | 0 | 0 |
| 4 GOLLA J | 7 WIENCEK P | 18 KOSTER J | 39 STUTZKE L | 44 STEINERT C | 45 REBMANN D | 93 ZIEKER P | 0:03 | 0 | 0 |

| Score development | | | | | | | Time Played | G Diff. |
|-------------------|---------------|---------------|---------------|---------------|---------------|---------------|-------------|---------|
| 1 BITTER J | 4 GOLLA J | 17 ZERBE L | 18 KOSTER J | 20 WEBER P | 44 STEINERT C | 93 ZIEKER P | 5:29 | +4 |
| 4 GOLLA J | 7 WIENCEK P | 9 REICHMANN T | 10 WIEDE F | 20 WEBER P | 45 REBMANN D | 93 ZIEKER P | 2:32 | +2 |
| 1 BITTER J | 7 WIENCEK P | 9 REICHMANN T | 10 WIEDE F | 39 STUTZKE L | 93 ZIEKER P | 95 DRUX P | 0:17 | +1 |
| 1 BITTER J | 4 GOLLA J | 7 WIENCEK P | 17 ZERBE L | 20 WEBER P | 77 SCHMIDT D | 93 ZIEKER P | 0:40 | +1 |
| 4 GOLLA J | 7 WIENCEK P | 9 REICHMANN T | 18 KOSTER J | 44 STEINERT C | 45 REBMANN D | 93 ZIEKER P | 1:18 | +1 |
| 4 GOLLA J | 7 WIENCEK P | 9 REICHMANN T | 10 WIEDE F | 39 STUTZKE L | 93 ZIEKER P | 95 DRUX P | 1:23 | +1 |
| 4 GOLLA J | 7 WIENCEK P | 18 KOSTER J | 39 STUTZKE L | 44 STEINERT C | 45 REBMANN D | 93 ZIEKER P | 0:03 | 0 |
| 1 BITTER J | 4 GOLLA J | 17 ZERBE L | 20 WEBER P | 77 SCHMIDT D | 93 ZIEKER P | 95 DRUX P | 0:06 | 0 |
| 7 WIENCEK P | 9 REICHMANN T | 10 WIEDE F | 18 KOSTER J | 20 WEBER P | 45 REBMANN D | 93 ZIEKER P | 0:10 | 0 |
| 1 BITTER J | 4 GOLLA J | 17 ZERBE L | 18 KOSTER J | 20 WEBER P | 40 ERNST S | 77 SCHMIDT D | 0:12 | 0 |
| 1 BITTER J | 4 GOLLA J | 7 WIENCEK P | 10 WIEDE F | 39 STUTZKE L | 93 ZIEKER P | 95 DRUX P | 0:13 | 0 |
| 1 BITTER J | 4 GOLLA J | 17 ZERBE L | 40 ERNST S | 77 SCHMIDT D | 93 ZIEKER P | 95 DRUX P | 0:27 | 0 |
| 7 WIENCEK P | 9 REICHMANN T | 10 WIEDE F | 18 KOSTER J | 45 REBMANN D | 77 SCHMIDT D | 93 ZIEKER P | 0:28 | 0 |
| 1 BITTER J | 4 GOLLA J | 17 ZERBE L | 18 KOSTER J | 20 WEBER P | 77 SCHMIDT D | 95 DRUX P | 0:40 | 0 |
| 4 GOLLA J | 9 REICHMANN T | 18 KOSTER J | 40 ERNST S | 44 STEINERT C | 45 REBMANN D | 93 ZIEKER P | 0:42 | 0 |
| 4 GOLLA J | 17 ZERBE L | 18 KOSTER J | 20 WEBER P | 77 SCHMIDT D | 93 ZIEKER P | 95 DRUX P | 0:43 | 0 |
| 4 GOLLA J | 7 WIENCEK P | 9 REICHMANN T | 18 KOSTER J | 20 WEBER P | 44 STEINERT C | 93 ZIEKER P | 0:45 | 0 |
| 1 BITTER J | 4 GOLLA J | 18 KOSTER J | 20 WEBER P | 40 ERNST S | 44 STEINERT C | 93 ZIEKER P | 0:49 | 0 |
| 7 WIENCEK P | 9 REICHMANN T | 18 KOSTER J | 39 STUTZKE L | 44 STEINERT C | 45 REBMANN D | 93 ZIEKER P | 0:49 | 0 |
| 1 BITTER J | 4 GOLLA J | 7 WIENCEK P | 17 ZERBE L | 40 ERNST S | 77 SCHMIDT D | 93 ZIEKER P | 0:53 | 0 |
| 4 GOLLA J | 7 WIENCEK P | 9 REICHMANN T | 10 WIEDE F | 18 KOSTER J | 39 STUTZKE L | 93 ZIEKER P | 0:57 | 0 |
| 4 GOLLA J | 9 REICHMANN T | 18 KOSTER J | 20 WEBER P | 44 STEINERT C | 45 REBMANN D | 93 ZIEKER P | 1:10 | 0 |
| 1 BITTER J | 7 WIENCEK P | 17 ZERBE L | 20 WEBER P | 39 STUTZKE L | 77 SCHMIDT D | 93 ZIEKER P | 1:24 | 0 |
| 4 GOLLA J | 9 REICHMANN T | 18 KOSTER J | 39 STUTZKE L | 44 STEINERT C | 45 REBMANN D | 93 ZIEKER P | 1:32 | 0 |
| 1 BITTER J | 4 GOLLA J | 7 WIENCEK P | 9 REICHMANN T | 10 WIEDE F | 93 ZIEKER P | 95 DRUX P | 1:45 | 0 |
| 1 BITTER J | 4 GOLLA J | 17 ZERBE L | 18 KOSTER J | 20 WEBER P | 40 ERNST S | 44 STEINERT C | 2:29 | 0 |
| 1 BITTER J | 7 WIENCEK P | 17 ZERBE L | 18 KOSTER J | 40 ERNST S | 77 SCHMIDT D | 93 ZIEKER P | 2:29 | 0 |
| 1 BITTER J | 4 GOLLA J | 9 REICHMANN T | 18 KOSTER J | 20 WEBER P | 44 STEINERT C | 93 ZIEKER P | 2:32 | 0 |

Match No: 53

GER 23 - 28 NOR

GER - Germany

| Score development | | | | | | | Time Played | G Diff. |
|-------------------|-------------|---------------|-------------|---------------|---------------|-------------|-------------|---------|
| 1 BITTER J | 4 GOLLA J | 17 ZERBE L | 20 WEBER P | 44 STEINERT C | 93 ZIEKER P | 95 DRUX P | 2:48 | 0 |
| 1 BITTER J | 7 WIENCEK P | 17 ZERBE L | 18 KOSTER J | 39 STUTZKE L | 77 SCHMIDT D | 93 ZIEKER P | 3:54 | 0 |
| 4 GOLLA J | 7 WIENCEK P | 18 KOSTER J | 20 WEBER P | 44 STEINERT C | 45 REBMANN D | 93 ZIEKER P | 0:28 | -1 |
| 1 BITTER J | 4 GOLLA J | 17 ZERBE L | 20 WEBER P | 40 ERNST S | 44 STEINERT C | 95 DRUX P | 0:30 | -1 |
| 1 BITTER J | 4 GOLLA J | 7 WIENCEK P | 17 ZERBE L | 18 KOSTER J | 77 SCHMIDT D | 93 ZIEKER P | 0:41 | -1 |
| 4 GOLLA J | 7 WIENCEK P | 9 REICHMANN T | 10 WIEDE F | 39 STUTZKE L | 45 REBMANN D | 93 ZIEKER P | 1:08 | -1 |
| 1 BITTER J | 7 WIENCEK P | 9 REICHMANN T | 10 WIEDE F | 40 ERNST S | 93 ZIEKER P | 95 DRUX P | 3:36 | -1 |
| 1 BITTER J | 4 GOLLA J | 17 ZERBE L | 40 ERNST S | 44 STEINERT C | 93 ZIEKER P | 95 DRUX P | 2:28 | -2 |
| 1 BITTER J | 4 GOLLA J | 9 REICHMANN T | 18 KOSTER J | 40 ERNST S | 44 STEINERT C | 93 ZIEKER P | 2:28 | -2 |
| 1 BITTER J | 4 GOLLA J | 17 ZERBE L | 18 KOSTER J | 40 ERNST S | 44 STEINERT C | 93 ZIEKER P | 4:07 | -3 |
| 4 GOLLA J | 7 WIENCEK P | 9 REICHMANN T | 10 WIEDE F | 18 KOSTER J | 45 REBMANN D | 93 ZIEKER P | 4:55 | -3 |

| Empty Net | | | | | | | Time Played | GF | GA |
|-----------|-------------|---------------|-------------|--------------|---------------|-------------|-------------|----|----|
| 4 GOLLA J | 7 WIENCEK P | 9 REICHMANN T | 10 WIEDE F | 39 STUTZKE L | 93 ZIEKER P | 95 DRUX P | 1:23 | 1 | 0 |
| 4 GOLLA J | 7 WIENCEK P | 9 REICHMANN T | 10 WIEDE F | 18 KOSTER J | 39 STUTZKE L | 93 ZIEKER P | 0:57 | 0 | 0 |
| 4 GOLLA J | 7 WIENCEK P | 9 REICHMANN T | 18 KOSTER J | 20 WEBER P | 44 STEINERT C | 93 ZIEKER P | 0:45 | 0 | 0 |
| 4 GOLLA J | 17 ZERBE L | 18 KOSTER J | 20 WEBER P | 77 SCHMIDT D | 93 ZIEKER P | 95 DRUX P | 0:43 | 0 | 0 |

Match No: 53

GER 23 - 28 NOR

NOR - Norway

| Lineup efficiency | | | | | | | | Time Played | GF | GA |
|-------------------|----------------|-----------------|-----------------|-----------------|-----------------|----------------|-------|-------------|----|----|
| 5 SAGOSEN S | 6 BARTHOLD S | 19 BJORNSEN K | 21 GULLERUD M | 24 O'SULLIVAN C | 27 REINKIND H | 30 BERGERUD T | 15:42 | 5 | 6 | |
| 6 BARTHOLD S | 7 OVERJORDET S | 13 TOFT E | 15 TONNESEN K | 30 BERGERUD T | 32 SOLSTAD T | 44 GULLIKSEN K | 8:31 | 6 | 0 | |
| 5 SAGOSEN S | 6 BARTHOLD S | 11 OVERBY P | 15 TONNESEN K | 21 GULLERUD M | 30 BERGERUD T | 44 GULLIKSEN K | 4:25 | 1 | 0 | |
| 6 BARTHOLD S | 11 OVERBY P | 13 TOFT E | 15 TONNESEN K | 24 O'SULLIVAN C | 30 BERGERUD T | 44 GULLIKSEN K | 3:24 | 2 | 3 | |
| 6 BARTHOLD S | 7 OVERJORDET S | 13 TOFT E | 15 TONNESEN K | 19 BJORNSEN K | 30 BERGERUD T | 32 SOLSTAD T | 2:19 | 3 | 0 | |
| 6 BARTHOLD S | 11 OVERBY P | 13 TOFT E | 15 TONNESEN K | 19 BJORNSEN K | 24 O'SULLIVAN C | 30 BERGERUD T | 2:15 | 1 | 3 | |
| 6 BARTHOLD S | 11 OVERBY P | 13 TOFT E | 15 TONNESEN K | 21 GULLERUD M | 30 BERGERUD T | 44 GULLIKSEN K | 1:58 | 0 | 2 | |
| 5 SAGOSEN S | 6 BARTHOLD S | 24 O'SULLIVAN C | 27 REINKIND H | 30 BERGERUD T | 32 SOLSTAD T | 44 GULLIKSEN K | 1:54 | 1 | 1 | |
| 3 AGA V | 5 SAGOSEN S | 6 BARTHOLD S | 11 OVERBY P | 15 TONNESEN K | 19 BJORNSEN K | 30 BERGERUD T | 1:35 | 0 | 0 | |
| 5 SAGOSEN S | 6 BARTHOLD S | 11 OVERBY P | 21 GULLERUD M | 27 REINKIND H | 30 BERGERUD T | 44 GULLIKSEN K | 1:29 | 1 | 1 | |
| 6 BARTHOLD S | 13 TOFT E | 15 TONNESEN K | 19 BJORNSEN K | 21 GULLERUD M | 24 O'SULLIVAN C | 30 BERGERUD T | 1:28 | 0 | 1 | |
| 5 SAGOSEN S | 6 BARTHOLD S | 7 OVERJORDET S | 13 TOFT E | 15 TONNESEN K | 32 SOLSTAD T | 44 GULLIKSEN K | 1:25 | 0 | 0 | |
| 5 SAGOSEN S | 6 BARTHOLD S | 19 BJORNSEN K | 24 O'SULLIVAN C | 27 REINKIND H | 30 BERGERUD T | 32 SOLSTAD T | 1:24 | 1 | 0 | |
| 5 SAGOSEN S | 6 BARTHOLD S | 11 OVERBY P | 13 TOFT E | 15 TONNESEN K | 30 BERGERUD T | 44 GULLIKSEN K | 1:22 | 0 | 1 | |
| 5 SAGOSEN S | 6 BARTHOLD S | 7 OVERJORDET S | 13 TOFT E | 15 TONNESEN K | 32 SOLSTAD T | 44 GULLIKSEN K | 1:21 | 0 | 0 | |
| 5 SAGOSEN S | 6 BARTHOLD S | 11 OVERBY P | 15 TONNESEN K | 24 O'SULLIVAN C | 30 BERGERUD T | 44 GULLIKSEN K | 1:16 | 0 | 1 | |
| 5 SAGOSEN S | 6 BARTHOLD S | 11 OVERBY P | 19 BJORNSEN K | 24 O'SULLIVAN C | 27 REINKIND H | 30 BERGERUD T | 0:59 | 0 | 0 | |
| 6 BARTHOLD S | 11 OVERBY P | 13 TOFT E | 15 TONNESEN K | 19 BJORNSEN K | 21 GULLERUD M | 30 BERGERUD T | 0:56 | 0 | 2 | |
| 6 BARTHOLD S | 7 OVERJORDET S | 11 OVERBY P | 13 TOFT E | 15 TONNESEN K | 19 BJORNSEN K | 32 SOLSTAD T | 0:49 | 1 | 0 | |
| 5 SAGOSEN S | 6 BARTHOLD S | 11 OVERBY P | 15 TONNESEN K | 19 BJORNSEN K | 24 O'SULLIVAN C | 30 BERGERUD T | 0:48 | 1 | 0 | |
| 5 SAGOSEN S | 6 BARTHOLD S | 13 TOFT E | 27 REINKIND H | 30 BERGERUD T | 32 SOLSTAD T | 44 GULLIKSEN K | 0:48 | 1 | 0 | |
| 5 SAGOSEN S | 6 BARTHOLD S | 19 BJORNSEN K | 21 GULLERUD M | 27 REINKIND H | 30 BERGERUD T | 42 SOLSTAD T | 0:36 | 0 | 0 | |
| 5 SAGOSEN S | 6 BARTHOLD S | 13 TOFT E | 15 TONNESEN K | 30 BERGERUD T | 32 SOLSTAD T | 44 GULLIKSEN K | 0:28 | 0 | 0 | |
| 3 AGA V | 6 BARTHOLD S | 11 OVERBY P | 13 TOFT E | 15 TONNESEN K | 19 BJORNSEN K | 30 BERGERUD T | 0:25 | 0 | 0 | |
| 6 BARTHOLD S | 11 OVERBY P | 13 TOFT E | 15 TONNESEN K | 19 BJORNSEN K | 30 BERGERUD T | 32 SOLSTAD T | 0:20 | 1 | 0 | |
| 5 SAGOSEN S | 6 BARTHOLD S | 15 TONNESEN K | 19 BJORNSEN K | 24 O'SULLIVAN C | 30 BERGERUD T | 32 SOLSTAD T | 0:19 | 1 | 0 | |
| 5 SAGOSEN S | 7 OVERJORDET S | 13 TOFT E | 15 TONNESEN K | 30 BERGERUD T | 32 SOLSTAD T | 44 GULLIKSEN K | 0:19 | 0 | 0 | |
| 5 SAGOSEN S | 6 BARTHOLD S | 15 TONNESEN K | 21 GULLERUD M | 30 BERGERUD T | 32 SOLSTAD T | 44 GULLIKSEN K | 0:17 | 1 | 0 | |
| 6 BARTHOLD S | 13 TOFT E | 15 TONNESEN K | 21 GULLERUD M | 30 BERGERUD T | 32 SOLSTAD T | 44 GULLIKSEN K | 0:14 | 0 | 0 | |
| 6 BARTHOLD S | 7 OVERJORDET S | 11 OVERBY P | 13 TOFT E | 15 TONNESEN K | 30 BERGERUD T | 44 GULLIKSEN K | 0:13 | 0 | 1 | |
| 5 SAGOSEN S | 6 BARTHOLD S | 11 OVERBY P | 15 TONNESEN K | 30 BERGERUD T | 32 SOLSTAD T | 44 GULLIKSEN K | 0:13 | 1 | 1 | |
| 5 SAGOSEN S | 6 BARTHOLD S | 21 GULLERUD M | 27 REINKIND H | 30 BERGERUD T | 32 SOLSTAD T | 44 GULLIKSEN K | 0:11 | 0 | 0 | |
| 5 SAGOSEN S | 6 BARTHOLD S | 15 TONNESEN K | 21 GULLERUD M | 24 O'SULLIVAN C | 32 SOLSTAD T | 44 GULLIKSEN K | 0:09 | 0 | 0 | |
| 6 BARTHOLD S | 7 OVERJORDET S | 11 OVERBY P | 13 TOFT E | 15 TONNESEN K | 19 BJORNSEN K | 30 BERGERUD T | 0:05 | 0 | 0 | |
| 5 SAGOSEN S | 6 BARTHOLD S | 11 OVERBY P | 27 REINKIND H | 30 BERGERUD T | 32 SOLSTAD T | 44 GULLIKSEN K | 0:03 | 0 | 0 | |

| Score development | | | | | | | | Time Played | G Diff. |
|-------------------|----------------|-----------------|-----------------|-----------------|-----------------|----------------|-------|-------------|---------|
| 6 BARTHOLD S | 7 OVERJORDET S | 13 TOFT E | 15 TONNESEN K | 30 BERGERUD T | 32 SOLSTAD T | 44 GULLIKSEN K | 8:31 | +6 | |
| 6 BARTHOLD S | 7 OVERJORDET S | 13 TOFT E | 15 TONNESEN K | 19 BJORNSEN K | 30 BERGERUD T | 32 SOLSTAD T | 2:19 | +3 | |
| 5 SAGOSEN S | 6 BARTHOLD S | 15 TONNESEN K | 21 GULLERUD M | 30 BERGERUD T | 32 SOLSTAD T | 44 GULLIKSEN K | 0:17 | +1 | |
| 5 SAGOSEN S | 6 BARTHOLD S | 15 TONNESEN K | 19 BJORNSEN K | 24 O'SULLIVAN C | 30 BERGERUD T | 32 SOLSTAD T | 0:19 | +1 | |
| 6 BARTHOLD S | 11 OVERBY P | 13 TOFT E | 15 TONNESEN K | 19 BJORNSEN K | 30 BERGERUD T | 32 SOLSTAD T | 0:20 | +1 | |
| 5 SAGOSEN S | 6 BARTHOLD S | 11 OVERBY P | 15 TONNESEN K | 19 BJORNSEN K | 24 O'SULLIVAN C | 30 BERGERUD T | 0:48 | +1 | |
| 5 SAGOSEN S | 6 BARTHOLD S | 13 TOFT E | 27 REINKIND H | 30 BERGERUD T | 32 SOLSTAD T | 44 GULLIKSEN K | 0:48 | +1 | |
| 6 BARTHOLD S | 7 OVERJORDET S | 11 OVERBY P | 13 TOFT E | 15 TONNESEN K | 19 BJORNSEN K | 32 SOLSTAD T | 0:49 | +1 | |
| 5 SAGOSEN S | 6 BARTHOLD S | 19 BJORNSEN K | 24 O'SULLIVAN C | 27 REINKIND H | 30 BERGERUD T | 32 SOLSTAD T | 1:24 | +1 | |
| 5 SAGOSEN S | 6 BARTHOLD S | 11 OVERBY P | 15 TONNESEN K | 21 GULLERUD M | 30 BERGERUD T | 44 GULLIKSEN K | 4:25 | +1 | |
| 5 SAGOSEN S | 6 BARTHOLD S | 11 OVERBY P | 27 REINKIND H | 30 BERGERUD T | 32 SOLSTAD T | 44 GULLIKSEN K | 0:03 | 0 | |
| 6 BARTHOLD S | 7 OVERJORDET S | 11 OVERBY P | 13 TOFT E | 15 TONNESEN K | 19 BJORNSEN K | 30 BERGERUD T | 0:05 | 0 | |
| 5 SAGOSEN S | 6 BARTHOLD S | 15 TONNESEN K | 21 GULLERUD M | 24 O'SULLIVAN C | 32 SOLSTAD T | 44 GULLIKSEN K | 0:09 | 0 | |
| 5 SAGOSEN S | 6 BARTHOLD S | 11 OVERBY P | 15 TONNESEN K | 30 BERGERUD T | 32 SOLSTAD T | 44 GULLIKSEN K | 0:13 | 0 | |
| 6 BARTHOLD S | 13 TOFT E | 15 TONNESEN K | 21 GULLERUD M | 30 BERGERUD T | 32 SOLSTAD T | 44 GULLIKSEN K | 0:14 | 0 | |
| 5 SAGOSEN S | 7 OVERJORDET S | 13 TOFT E | 15 TONNESEN K | 30 BERGERUD T | 32 SOLSTAD T | 44 GULLIKSEN K | 0:19 | 0 | |
| 3 AGA V | 6 BARTHOLD S | 11 OVERBY P | 13 TOFT E | 15 TONNESEN K | 19 BJORNSEN K | 30 BERGERUD T | 0:25 | 0 | |
| 5 SAGOSEN S | 6 BARTHOLD S | 13 TOFT E | 15 TONNESEN K | 30 BERGERUD T | 32 SOLSTAD T | 44 GULLIKSEN K | 0:28 | 0 | |
| 5 SAGOSEN S | 6 BARTHOLD S | 19 BJORNSEN K | 21 GULLERUD M | 27 REINKIND H | 30 BERGERUD T | 32 SOLSTAD T | 0:36 | 0 | |
| 5 SAGOSEN S | 6 BARTHOLD S | 11 OVERBY P | 19 BJORNSEN K | 24 O'SULLIVAN C | 27 REINKIND H | 30 BERGERUD T | 0:59 | 0 | |
| 5 SAGOSEN S | 6 BARTHOLD S | 7 OVERJORDET S | 15 TONNESEN K | 30 BERGERUD T | 32 SOLSTAD T | 44 GULLIKSEN K | 1:21 | 0 | |
| 5 SAGOSEN S | 6 BARTHOLD S | 7 OVERJORDET S | 13 TOFT E | 15 TONNESEN K | 32 SOLSTAD T | 44 GULLIKSEN K | 1:25 | 0 | |
| 5 SAGOSEN S | 6 BARTHOLD S | 11 OVERBY P | 21 GULLERUD M | 27 REINKIND H | 30 BERGERUD T | 44 GULLIKSEN K | 1:29 | 0 | |
| 3 AGA V | 5 SAGOSEN S | 6 BARTHOLD S | 11 OVERBY P | 15 TONNESEN K | 19 BJORNSEN K | 30 BERGERUD T | 1:35 | 0 | |
| 5 SAGOSEN S | 6 BARTHOLD S | 24 O'SULLIVAN C | 27 REINKIND H | 30 BERGERUD T | 32 SOLSTAD T | 44 GULLIKSEN K | 1:54 | 0 | |
| 6 BARTHOLD S | 7 OVERJORDET S | 11 OVERBY P | 13 TOFT E | 15 TONNESEN K | 30 BERGERUD T | 44 GULLIKSEN K | 0:13 | -1 | |
| 5 SAGOSEN S | 6 BARTHOLD S | 11 OVERBY P | 15 TONNESEN K | 24 O'SULLIVAN C | 30 BERGERUD T | 44 GULLIKSEN K | 1:16 | -1 | |
| 5 SAGOSEN S | 6 BARTHOLD S | 11 OVERBY P | 13 TOFT E | 15 TONNESEN K | 30 BERGERUD T | 44 GULLIKSEN K | 1:22 | -1 | |
| 6 BARTHOLD S | 13 TOFT E | 15 TONNESEN K | 19 BJORNSEN K | 21 GULLERUD M | 24 O'SULLIVAN C | 30 BERGERUD T | 1:28 | -1 | |
| 6 BARTHOLD S | 11 OVERBY P | 13 TOFT E | 15 TONNESEN K | 24 O'SULLIVAN C | 30 BERGERUD T | 44 GULLIKSEN K | 3:24 | -1 | |
| 5 SAGOSEN S | 6 BARTHOLD S | 19 BJORNSEN K | 21 GULLERUD M | 24 O'SULLIVAN C | 27 REINKIND H | 30 BERGERUD T | 15:42 | -1 | |

Match No: 53

GER 23 - 28 NOR

NOR - Norway

| Score development | | | | | | | | Time Played | G Diff. |
|-------------------|-------------|-----------|---------------|---------------|-----------------|----------------|--|-------------|---------|
| 6 BARTHOLD S | 11 OVERBY P | 13 TOFT E | 15 TONNESEN K | 19 BJORNSEN K | 21 GULLERUD M | 30 BERGERUD T | | 0:56 | -2 |
| 6 BARTHOLD S | 11 OVERBY P | 13 TOFT E | 15 TONNESEN K | 21 GULLERUD M | 30 BERGERUD T | 44 GULLIKSEN K | | 1:58 | -2 |
| 6 BARTHOLD S | 11 OVERBY P | 13 TOFT E | 15 TONNESEN K | 19 BJORNSEN K | 24 O'SULLIVAN C | 30 BERGERUD T | | 2:15 | -2 |

| Empty Net | | | | | | | | Time Played | GF | GA |
|--------------|----------------|----------------|---------------|-----------------|---------------|----------------|--|-------------|----|----|
| 5 SAGOSEN S | 6 BARTHOLD S | 7 OVERJORDET S | 13 TOFT E | 15 TONNESEN K | 32 SOLSTAD T | 44 GULLIKSEN K | | 1:25 | 0 | 0 |
| 6 BARTHOLD S | 7 OVERJORDET S | 11 OVERBY P | 13 TOFT E | 15 TONNESEN K | 19 BJORNSEN K | 32 SOLSTAD T | | 0:49 | 1 | 0 |
| 5 SAGOSEN S | 6 BARTHOLD S | 15 TONNESEN K | 21 GULLERUD M | 24 O'SULLIVAN C | 32 SOLSTAD T | 44 GULLIKSEN K | | 0:09 | 0 | 0 |

FRI 21 JAN 2022
Start Time: 20:30

Bratislava

Results

Match No: 53

GER 23 - 28 NOR

(12 - 14) (11 - 14)

Referees: LAH Bojan (SLO) / SOK David (SLO)

Germany

Coach: GISLASON Alfred

Time outs: 2

| No | Name | Total | | | Goals / Shots | | | | | | | Punishments | | | TP | |
|--------|--------------------|-------|-------|-----|---------------|------|------|-----|-----|-----|------|-------------|----|----|----|-------|
| | | Goals | Shots | % | 7mP | 6mC | Wing | BT | FB | FTO | 9m | YC | RC | 2M | | |
| 1 | BITTER Johannes | | | | | | | | | | | | | | | 40:57 |
| 4 | GOLLA Johannes | 4 | 4 | 100 | | 4/4 | | | | | | | | | | 46:53 |
| 7 | WIENCEK Patrick | 2 | 2 | 100 | | 1/1 | | | 1/1 | | | | | 1 | | 30:48 |
| 9 | REICHMANN Tobias | 2 | 3 | 67 | 0/1 | | 2/2 | | | | | | | | | 28:27 |
| 10 | WIEDE Fabian | 2 | 5 | 40 | | 1/3 | | 1/1 | | | 0/1 | | | | | 17:24 |
| 17 | ZERBE Lukas | 2 | 2 | 100 | | | | | 2/2 | | | | | | | 30:00 |
| 18 | KOSTER Julian | 3 | 5 | 60 | | 1/1 | | | | | 2/4 | | | | | 39:50 |
| 20 | WEBER Philipp | 3 | 5 | 60 | | 1/1 | | | | | 2/4 | | | | | 23:27 |
| 34 | DAHMKKE Rune | | | | | | | | | | | | | | | 0:00 |
| 39 | STUTZKE Lukas | 1 | 3 | 33 | | 0/1 | | | | | 1/2 | | | | | 11:40 |
| 40 | ERNST Simon | | | | | | | | | | | | 1 | | | 21:10 |
| 44 | STEINERT Christoph | 1 | 2 | 50 | | 0/1 | | | | | 1/1 | | | | | 30:27 |
| 45 | REBMANN Daniel | | | | | | | | | | | | | | | 15:15 |
| 77 | SCHMIDT David | 1 | 2 | 50 | | 0/1 | | | | | 1/1 | | | | | 12:37 |
| 93 | ZIEKER Patrick | 2 | 3 | 67 | | | 2/3 | | | | | | | | | 56:09 |
| 95 | DRUX Paul | 0 | 2 | 0 | | | | 0/1 | | | 0/1 | | | 1 | | 14:56 |
| Totals | | 23 | 38 | 61 | 0/1 | 8/13 | 4/5 | 1/2 | 3/3 | | 7/14 | 1 | | 2 | | 60:00 |

| No | Name | Total | | | Saves / Shots | | | | | | | | |
|--------|-----------------|-------|-------|----|---------------|------|------|----|-----|-----|------|--|--|
| | | Saves | Shots | % | 7mP | 6mC | Wing | BT | FB | FTO | 9m | | |
| 1 | BITTER Johannes | 10 | 31 | 32 | 0/1 | 2/12 | 4/7 | | 0/1 | | 4/10 | | |
| 45 | REBMANN Daniel | 2 | 9 | 22 | | 2/3 | 0/3 | | | | 0/3 | | |
| Totals | | 12 | 40 | 30 | 0/1 | 4/15 | 4/10 | | 0/1 | | 4/13 | | |

Norway

Coach: BERGE Christian

Time outs: 3

| No | Name | Total | | | Goals / Shots | | | | | | | Punishments | | | TP | |
|--------|---------------------------|-------|-------|-----|---------------|-------|------|----|-----|-----|------|-------------|----|----|----|-------|
| | | Goals | Shots | % | 7mP | 6mC | Wing | BT | FB | FTO | 9m | YC | RC | 2M | | |
| 3 | AGA Vetle Eck | | | | | | | | | | | | | | | 2:00 |
| 5 | SAGOSEN Sander | 4 | 9 | 44 | | 3/3 | 0/1 | | | | 1/5 | | | 1 | | 37:03 |
| 6 | BARTHOLD Sebastian | 4 | 5 | 80 | 1/1 | | 2/3 | | 1/1 | | | | | | | 59:41 |
| 7 | OVERJORDET Sander | 2 | 4 | 50 | | 2/3 | 0/1 | | | | | | | | | 15:02 |
| 11 | OVERBY Petter | 1 | 1 | 100 | | 1/1 | | | | | | | | | | 22:35 |
| 12 | SAEVERAAS Kristian | | | | | | | | | | | | | | | 0:00 |
| 13 | TOFT Erik Thorsteinsen | 7 | 10 | 70 | | 2/3 | | | | | 5/7 | | | 1 | | 27:19 |
| 15 | TONNESEN Kent Robin | 1 | 5 | 20 | | 0/1 | 1/4 | | | | | | | | | 36:54 |
| 19 | BJORNSEN Kristian | 3 | 4 | 75 | | | 3/4 | | | | | | | | | 30:00 |
| 21 | GULLERUD Magnus | | | | | | | | | | | | | | | 27:25 |
| 24 | O'SULLIVAN Christian | 1 | 1 | 100 | | 1/1 | | | | | | | | | | 29:38 |
| 27 | REINKIND Harald | 3 | 4 | 75 | | 0/1 | | | | | 3/3 | | | | | 23:06 |
| 30 | BERGERUD Torbjørn Sittrup | | | | | | | | | | | | | | | 57:37 |
| 32 | SOLSTAD Thomas | 2 | 2 | 100 | | 2/2 | | | | | | | | | | 21:40 |
| 44 | GULLIKSEN Kevin Maageroe | | | | | | | | | | | | | | | 30:00 |
| 71 | BLONZ Alexandre | | | | | | | | | | | | | | | 0:00 |
| Totals | | 28 | 45 | 62 | 1/1 | 11/15 | 6/13 | | 1/1 | | 9/15 | | | 3 | | 60:00 |

| No | Name | Total | | | Saves / Shots | | | | | | | | |
|--------|---------------------------|-------|-------|----|---------------|------|------|-----|-----|-----|------|--|--|
| | | Saves | Shots | % | 7mP | 6mC | Wing | BT | FB | FTO | 9m | | |
| 12 | SAEVERAAS Kristian | | | | | | | | | | | | |
| 30 | BERGERUD Torbjørn Sittrup | 11 | 34 | 32 | | 3/11 | 1/5 | 1/2 | 0/3 | | 6/13 | | |
| Totals | | 11 | 34 | 32 | | 3/11 | 1/5 | 1/2 | 0/3 | | 6/13 | | |

Attacks

| Team | All | | Player Majority | | Player Minority | | Position Attacks | | FB | | Ind. FB | | Team FB | | TO | TO % |
|------|--------|----|-----------------|----|-----------------|----|------------------|----|--------|-----|---------|---|---------|-----|----|------|
| | G/Att. | % | G/Att. | % | G/Att. | % | G/Att. | % | G/Att. | % | G/Att. | % | G/Att. | % | | |
| GER | 23/46 | 50 | 4/5 | 80 | 0/2 | 0 | 20/42 | 48 | 3/4 | 75 | | | 3/4 | 75 | 9 | 20 |
| NOR | 28/46 | 61 | 2/3 | 67 | 2/3 | 67 | 27/45 | 60 | 1/1 | 100 | | | 1/1 | 100 | 4 | 9 |

RUNNING SCORE

| GER - NOR | |
|-----------------|------------------------|
| 1st Half | |
| GOLLA J | 1 (3') 0 |
| WEBER P | 2 (4') 0 |
| GOLLA J | 2 (5') 1 SAGOSEN S |
| GOLLA J | 3 (6') 1 |
| ZERBE L | 3 (6') 2 BJORNSEN K |
| ZERBE L | 4 (8') 2 |
| ZERBE L | 4 (9') 3 BJORNSEN K |
| ZERBE L | 5 (11') 3 |
| ZERBE L | 5 (12') 4 BARTHOLD S |
| ZERBE L | 5 (14') 5 REINKIND H |
| STEINERT C | 6 (14') 5 |
| STEINERT C | 6 (18') 6 REINKIND H |
| STEINERT C | 6 (19') 7 SAGOSEN S |
| STEINERT C | 6 (20') 8 O'SULLIVAN C |
| SCHMIDT D | 7 (23') 8 |
| SCHMIDT D | 7 (24') 9 |
| ZIEKER P | 8 (24') 9 |
| ZIEKER P | 8 (25') 10 TOFT E |
| STUTZKE L | 9 (25') 10 |
| STUTZKE L | 9 (27') 11 BJORNSEN K |
| STUTZKE L | 9 (27') 12 BARTHOLD S |
| KOSTER J | 10 (29') 12 |
| KOSTER J | 10 (29') 13 TOFT E |
| ZIEKER P | 11 (30') 13 |
| ZIEKER P | 11 (30') 14 SOLSTAD T |
| WIENCEK P | 12 (30') 14 |

| | |
|-----------------|--------------------------|
| 2nd Half | |
| GOLLA J | 12 (32') 15 TOFT E |
| GOLLA J | 12 (33') 16 OVERBY P |
| GOLLA J | 13 (34') 16 |
| GOLLA J | 13 (34') 17 OVERJORDET S |
| KOSTER J | 14 (35') 17 |
| KOSTER J | 14 (36') 18 TOFT E |
| WEBER P | 15 (37') 18 |
| WEBER P | 15 (38') 19 BARTHOLD S |
| REICHMANN T | 16 (39') 19 |
| REICHMANN T | 16 (40') 20 TONNESEN K |
| WEBER P | 17 (42') 20 |
| WEBER P | 17 (44') 21 SAGOSEN S |
| WEBER P | 17 (45') 22 BARTHOLD S |
| KOSTER J | 18 (48') 22 |
| KOSTER J | 18 (50') 23 TOFT E |
| WIEDE F | 19 (51') 23 |
| WIEDE F | 19 (52') 24 TOFT E |
| WIEDE F | 19 (53') 25 TOFT E |
| WIENCEK P | 20 (54') 25 |
| WIENCEK P | 21 (55') 25 |
| WIENCEK P | 21 (57') 26 SAGOSEN S |
| REICHMANN T | 22 (57') 26 |
| REICHMANN T | 22 (58') 27 SOLSTAD T |
| GOLLA J | 23 (59') 27 |
| GOLLA J | 23 (59') 28 REINKIND H |

Legend:

| | | | | | | | |
|-----|----------------|--------|----------------------|------|----------------------|----|-----------------------|
| % | Efficiency | 2M | 2-Minute Suspensions | 6mC | 6-metre Centre Shots | 7m | 7-metre Penalty Shots |
| 9m | 9-metre Shots | BT | Breakthroughs | EG | Empty Goal | FB | Fast Breaks |
| FTO | Fast Throw off | G/Att. | Goals/Attacks | Ind. | Individual | RC | Red Cards |
| TO | Turnover | TP | Time Played | YC | Yellow Cards | | |

FRI 21 JAN 2022
Start Time: 20:30

Bratislava

Play by Play

Match No: 53

GER 23 - 28 NOR

(12 - 14) (11 - 14)

Referees: LAH Bojan (SLO) / SOK David (SLO)

| | | | | |
|------------|------------------------------|-----------------------|-----------------------------|------------------------|
| GER | 1 BITTER Johannes | 4 GOLLA Johannes | 7 WIENCEK Patrick | 9 REICHMANN Tobias |
| | 10 WIEDE Fabian | 17 ZERBE Lukas | 18 KOSTER Julian | 20 WEBER Philipp |
| | 34 DAHMKE Rune | 39 STUTZKE Lukas | 40 ERNST Simon | 44 STEINERT Christoph |
| | 45 REBMANN Daniel | 77 SCHMIDT David | 93 ZIEKER Patrick | 95 DRUX Paul |
| | B GISLASON Alfred | C ANDERSSON Mattias | E GRAESCHUS Peter | H ROGGISCH Oliver |
| NOR | 3 AGA Vette Eck | 5 SAGOSEN Sander | 6 BARTHOLD Sebastian | 7 OVERJORDET Sander |
| | 11 OVERBY Petter | 12 SAEVERAAS Kristian | 13 TOFT Erik Thorsteinsen | 15 TONNESEN Kent Robin |
| | 19 BJORNSEN Kristian | 21 GULLERUD Magnus | 24 O'SULLIVAN Christian | 27 REINKIND Harald |
| | 30 BERGERUD Torbjorn Sittrup | 32 SOLSTAD Thomas | 44 GULLIKSEN Kevin Maageroe | 71 BLONZ Alexandre |
| | A EGE Steinar | B BERGE Christian | C WILLE Jonas | D MARKUSSEN Harald |

1st HALF

| Match Time | GER - Germany | Score Lead | NOR - Norway |
|------------|---|------------|---|
| 0:00 | 1 BITTER J Goalkeeper | | 30 BERGERUD T Goalkeeper |
| 1:08 | 93 ZIEKER P Shot left wing saved bottom right | | |
| 1:48 | | | 5 SAGOSEN S Shot left wing saved bottom left |
| 2:14 | 4 GOLLA J Goal centre 6m bottom centre (20 WEBER P), 58 km/h | 1 - 0 +1 | |
| 2:26 | | | 27 REINKIND H Turnover |
| 3:24 | 20 WEBER P Goal centre 9m top left (18 KOSTER J), 112 km/h | 2 - 0 +2 | |
| 4:14 | | 2 - 1 +1 | 5 SAGOSEN S Goal centre 6m bottom right, 101 km/h |
| 4:52 | 4 GOLLA J Goal centre 6m bottom centre (18 KOSTER J), 85 km/h | 3 - 1 +2 | |
| 5:37 | | 3 - 2 +1 | 19 BJORNSEN K Goal right wing bottom right (21 GULLERUD M), 63 km/h |
| 6:05 | 18 KOSTER J Turnover | | |
| 7:10 | | | 5 SAGOSEN S Shot centre 9m saved bottom left |
| 7:16 | 17 ZERBE L Goal fast break bottom right (40 ERNST S), 80 km/h | 4 - 2 +2 | |
| 7:49 | 40 ERNST S Warning (yellow card) | | |
| 8:48 | | 4 - 3 +1 | 19 BJORNSEN K Goal right wing bottom right (27 REINKIND H), 74 km/h |
| 9:32 | 4 GOLLA J Technical Fault | | |
| 10:22 | | | 5 SAGOSEN S Shot centre 9m saved top left |
| 10:28 | 17 ZERBE L Goal fast break bottom right (1 BITTER J), 75 km/h | 5 - 3 +2 | |
| 11:10 | | | 27 REINKIND H Shot centre 6m saved bottom centre |
| 11:18 | 18 KOSTER J Technical Fault | | |
| 11:30 | 44 STEINERT C 7m caused | | 21 GULLERUD M 7m received |
| 11:52 | | 5 - 4 +1 | 6 BARTHOLD S Goal Penalty shot top centre (21 GULLERUD M), 59 km/h |
| 12:48 | 95 DRUX P Shot breakthrough saved top centre | | |
| 13:35 | | 5 - 5 0 | 27 REINKIND H Goal centre 9m top right (5 SAGOSEN S), 112 km/h |
| 13:49 | 44 STEINERT C Goal centre 9m bottom right (95 DRUX P), 91 km/h | 6 - 5 +1 | |
| 13:57 | 95 DRUX P 2-minutes suspension | | |
| 13:58 | | | |
| 14:27 | | | 5 SAGOSEN S Shot centre 9m saved top centre |
| 14:43 | 18 KOSTER J for 1 BITTER J Empty goal | | |
| 15:26 | 1 BITTER J for 93 ZIEKER P Goalkeeper back | | |
| 15:56 | 18 KOSTER J Shot centre 9m saved middle left | | |
| 15:58 | | | |
| 16:06 | | | 6 BARTHOLD S Shot left wing saved top left |
| 16:46 | 20 WEBER P Shot centre 9m saved top right | | |
| 17:19 | | 6 - 6 0 | 27 REINKIND H Goal centre 9m bottom left (5 SAGOSEN S), 110 km/h |
| 17:32 | 20 WEBER P Turnover | | |
| 18:18 | | | 5 SAGOSEN S Technical Fault |
| 18:26 | 17 ZERBE L Turnover (FB) | | 6 BARTHOLD S Steal |
| 18:55 | | 6 - 7 -1 | 5 SAGOSEN S Goal centre 9m bottom right, 88 km/h |
| 19:31 | 95 DRUX P Shot centre 9m post | | |
| 19:40 | | 6 - 8 -2 | 24 O'SULLIVAN C Goal centre 6m bottom centre, 67 km/h |
| 20:51 | 39 STUTZKE L Shot centre 6m saved bottom left | | |
| 21:01 | | | 19 BJORNSEN K Shot right wing saved top left |
| 21:14 | Team timeout | | |
| 21:28 | 39 STUTZKE L Shot centre 9m saved bottom left | | |
| 22:02 | | | 15 TONNESEN K Shot centre 6m saved bottom left |
| 22:12 | | | 11 OVERBY P 2-minutes suspension |
| 22:13 | | | |
| 22:29 | 77 SCHMIDT D Goal centre 9m bottom right (20 WEBER P), 105 km/h | 7 - 8 -1 | |

FRI 21 JAN 2022

Start Time: 20:30

Play by Play

Match No: 53

Bratislava

GER 23 - 28 NOR

(12 - 14) (11 - 14)

1st HALF

| Match Time | GER - Germany | Score | Lead | NOR - Norway |
|------------|---|---------|------|---|
| 22:40 | | | | 7 OVERJORDET S for 30 BERGERUD T Empty goal |
| 23:04 | | 7 - 9 | -2 | 7 OVERJORDET S Goal centre 6m bottom centre (13 TOFT E), 113 km/h |
| 23:08 | | | | 30 BERGERUD T for 32 SOLSTAD T Goalkeeper back |
| 23:29 | 93 ZIEKER P Goal left wing bottom centre (7 WIENCEK P), 93 km/h | 8 - 9 | -1 | |
| 23:45 | | | | 7 OVERJORDET S for 30 BERGERUD T Empty goal |
| 24:06 | | | | 30 BERGERUD T for 7 OVERJORDET S Goalkeeper back |
| 24:04 | | 8 - 10 | -2 | 13 TOFT E Goal centre 9m top left (15 TONNESEN K), 100 km/h |
| 24:13 | | | | |
| 24:37 | 39 STUTZKE L Goal centre 9m bottom left (18 KOSTER J), 97 km/h | 9 - 10 | -1 | |
| 24:57 | 18 KOSTER J Steal | | | 24 O'SULLIVAN C Turnover |
| 25:39 | 77 SCHMIDT D Shot centre 6m saved bottom left | | | |
| 26:10 | | | | 13 TOFT E Shot centre 9m saved top left |
| 26:30 | | 9 - 11 | -2 | 19 BJORNSEN K Goal right wing bottom left (15 TONNESEN K), 104 km/h |
| 26:42 | 18 KOSTER J Turnover | | | 11 OVERBY P Steal |
| 26:50 | | 9 - 12 | -3 | 6 BARTHOLD S Goal fast break bottom left, 100 km/h |
| 28:03 | 18 KOSTER J Goal centre 9m top left, 123 km/h | 10 - 12 | -2 | |
| 28:13 | | | | Team timeout |
| 28:42 | | 10 - 13 | -3 | 13 TOFT E Goal centre 6m bottom right, 111 km/h |
| 29:10 | 93 ZIEKER P Goal left wing bottom left (18 KOSTER J), 77 km/h | 11 - 13 | -2 | |
| 29:45 | | 11 - 14 | -3 | 32 SOLSTAD T Goal centre 6m bottom centre (19 BJORNSEN K), 112 km/h |
| 29:56 | 7 WIENCEK P Goal centre 6m top right, 81 km/h | 12 - 14 | -2 | |

2nd HALF

| Match Time | GER - Germany | Score | Lead | NOR - Norway |
|------------|---|---------|------|---|
| 30:00 | 1 BITTER J Goalkeeper | | | 30 BERGERUD T Goalkeeper |
| 30:58 | 18 KOSTER J Block | | | 15 TONNESEN K Shot right wing blocked |
| 31:11 | | 12 - 15 | -3 | 13 TOFT E Goal centre 6m top right, 132 km/h |
| 32:05 | 44 STEINERT C Technical Fault | | | |
| 32:12 | | 12 - 16 | -4 | 11 OVERBY P Goal centre 6m bottom left (24 O'SULLIVAN C), 60 km/h |
| 33:10 | 4 GOLLA J Goal centre 6m top right (18 KOSTER J), 120 km/h | 13 - 16 | -3 | |
| 33:53 | | 13 - 17 | -4 | 7 OVERJORDET S Goal centre 6m top left, 97 km/h |
| 34:22 | 18 KOSTER J Goal centre 9m top right, 85 km/h | 14 - 17 | -3 | |
| 35:29 | | 14 - 18 | -4 | 13 TOFT E Goal centre 9m middle right (15 TONNESEN K), 129 km/h |
| 35:49 | 45 REBMANN D for 1 BITTER J Goalkeeper Substitution | | | |
| 36:02 | 20 WEBER P Goal centre 6m bottom right, 105 km/h | 15 - 18 | -3 | |
| 36:39 | | | | 7 OVERJORDET S Shot centre 6m saved bottom centre |
| 36:49 | 20 WEBER P Shot centre 9m saved top right | | | |
| 37:25 | | 15 - 19 | -4 | 6 BARTHOLD S Goal left wing bottom centre (7 OVERJORDET S), 74 km/h |
| 37:39 | | | | 13 TOFT E 2-minutes suspension |
| 37:40 | | | | |
| 38:22 | 9 REICHMANN T Goal right wing top left (10 WIEDE F), 109 km/h | 16 - 19 | -3 | |
| 38:35 | | | | 7 OVERJORDET S for 30 BERGERUD T Empty goal |
| 39:36 | | | | 30 BERGERUD T for 6 BARTHOLD S Goalkeeper back |
| 39:40 | | | | |
| 39:57 | | 16 - 20 | -4 | 15 TONNESEN K Goal right wing top left (32 SOLSTAD T), 123 km/h |
| 40:43 | | | | 5 SAGOLEN S 2-minutes suspension |
| 40:44 | | | | |
| 41:01 | 20 WEBER P Goal centre 9m bottom right (10 WIEDE F), 127 km/h | 17 - 20 | -3 | |
| 41:55 | | | | 15 TONNESEN K Shot right wing missed |
| 41:59 | | | | 32 SOLSTAD T for 30 BERGERUD T Empty goal |
| 42:09 | | | | 30 BERGERUD T for 32 SOLSTAD T Goalkeeper back |
| 42:15 | 10 WIEDE F Shot centre 9m saved bottom right | | | |
| 42:35 | | | | 7 OVERJORDET S for 30 BERGERUD T Empty goal |
| 42:44 | | | | |
| 42:49 | | | | 30 BERGERUD T for 5 SAGOLEN S Goalkeeper back |
| 43:16 | 7 WIENCEK P 2-minutes suspension | | | |
| 43:17 | | | | |
| 43:30 | | | | 24 O'SULLIVAN C for 30 BERGERUD T Empty goal |
| 43:39 | | | | 30 BERGERUD T for 24 O'SULLIVAN C Goalkeeper back |
| 43:38 | | 17 - 21 | -4 | 5 SAGOLEN S Goal centre 6m bottom left, 118 km/h |
| 43:56 | 20 WEBER P for 45 REBMANN D Empty goal | | | |
| 44:41 | 45 REBMANN D for 9 REICHMANN T Goalkeeper back | | | |
| 44:48 | Turnover bench/team | | | |
| 44:58 | | 17 - 22 | -5 | 6 BARTHOLD S Goal left wing bottom right (11 OVERBY P), 79 km/h |
| 45:17 | | | | |
| 45:49 | Team timeout | | | |

Play by Play

Match No: 53

Bratislava

GER 23 - 28 NOR

(12 - 14) (11 - 14)

2nd HALF

| Match Time | GER - Germany | Score | Lead | NOR - Norway |
|------------|---|---------|------|---|
| 46:03 | 18 KOSTER J Shot centre 9m saved bottom centre | | | |
| 46:56 | | | | 32 SOLSTAD T Technical Fault |
| 47:07 | 18 KOSTER J Goal centre 6m bottom left, 94 km/h | 18 - 22 | -4 | |
| 47:38 | | | | 15 TONNESEN K Shot right wing missed |
| 48:42 | 44 STEINERT C Shot centre 6m post | | | |
| 49:09 | | | | 13 TOFT E Shot centre 6m saved middle centre |
| 49:35 | | 18 - 23 | -5 | 13 TOFT E Goal centre 9m top right (7 OVERJORDET S), 125 km/h |
| 50:01 | 18 KOSTER J for 45 REBMANN D Empty goal | | | |
| 50:22 | 45 REBMANN D for 39 STUTZKE L Goalkeeper back | | | |
| 50:20 | 10 WIEDE F Goal breakthrough top left, 116 km/h | 19 - 23 | -4 | |
| 51:07 | | 19 - 24 | -5 | 13 TOFT E Goal centre 9m top centre (15 TONNESEN K), 82 km/h |
| 51:17 | 39 STUTZKE L for 45 REBMANN D Empty goal | | | |
| 51:17 | 18 KOSTER J Technical Fault | | | |
| 51:20 | 45 REBMANN D for 39 STUTZKE L Goalkeeper back | | | |
| 52:01 | | 19 - 25 | -6 | 13 TOFT E Goal centre 9m top right, 114 km/h |
| 52:13 | 39 STUTZKE L for 45 REBMANN D Empty goal | | | |
| 52:43 | 93 ZIEKER P 7m received | | | 44 GULLIKSEN K 7m caused |
| 52:46 | 1 BITTER J for 18 KOSTER J Goalkeeper back | | | |
| 52:46 | 9 REICHMANN T Penalty shot post | | | |
| 53:02 | | | | Team timeout |
| 53:39 | | | | 13 TOFT E Shot centre 9m missed |
| 53:45 | 7 WIENCEK P Goal fast break bottom right (10 WIEDE F), 101 km/h | 20 - 25 | -5 | |
| 54:42 | | | | 7 OVERJORDET S Shot right wing saved bottom centre |
| 54:51 | 10 WIEDE F Goal centre 6m bottom centre, 85 km/h | 21 - 25 | -4 | |
| 56:05 | | 21 - 26 | -5 | 5 SAGOSEN S Goal centre 6m bottom right, 126 km/h |
| 56:23 | 4 GOLLA J for 1 BITTER J Empty goal | | | |
| 56:36 | 9 REICHMANN T Goal right wing top left (39 STUTZKE L) | 22 - 26 | -4 | |
| 56:45 | 1 BITTER J for 4 GOLLA J Goalkeeper back | | | |
| 57:31 | | 22 - 27 | -5 | 32 SOLSTAD T Goal centre 6m bottom left (5 SAGOSEN S), 117 km/h |
| 57:49 | 4 GOLLA J for 1 BITTER J Empty goal | | | |
| 58:13 | 1 BITTER J for 39 STUTZKE L Goalkeeper back | | | |
| 58:10 | 10 WIEDE F Shot centre 6m saved top left | | | |
| 58:12 | 4 GOLLA J Goal centre 6m top left, 70 km/h | 23 - 27 | -4 | |
| 58:56 | | 23 - 28 | -5 | 27 REINKIND H Goal centre 9m bottom right (5 SAGOSEN S), 129 km/h |
| 59:09 | 39 STUTZKE L for 1 BITTER J Empty goal | | | |
| 59:41 | 10 WIEDE F Shot centre 6m missed | | | |
| 59:46 | | | | Team timeout |
| 59:46 | 1 BITTER J for 9 REICHMANN T Goalkeeper back | | | |
| 59:59 | 7 WIENCEK P Block | | | 5 SAGOSEN S Shot direct free throw blocked |

Match Team Statistics

Match No: 53

GER 23 - 28 NOR

(12 - 14) (11 - 14)

Referees: LAH Bojan (SLO) / SOK David (SLO)

GER - Germany Coach: GISLASON Alfred (ISL)

Time outs: 2

| No. | Name | Total | | | All Goals / Shots | | | | | | | Punishments | | | | Offence | | | Defence | | | TP | | |
|--------|--------------------|-------|-------|-----|-------------------|-----|------|------|-----|-----|-----|-------------|----|----|----|---------|----|----|---------|----|----|----|----|-------|
| | | Goals | Shots | % | 7mP | 7m% | 6mC | Wing | BT | FB | FTO | 9m | YC | RC | 2M | 2+2 | AS | R7 | TO/TF | ST | BS | | P7 | |
| 1 | BITTER Johannes | | | | | | | | | | | | | | | | 1 | | | | | | | 40:57 |
| 4 | GOLLA Johannes | 4 | 4 | 100 | | | 4/4 | | | | | | | | | | | | / 1 | | | | | 46:53 |
| 7 | WIENCEK Patrick | 2 | 2 | 100 | | | 1/1 | | | 1/1 | | | | | | | | | | | 1 | | | 30:48 |
| 9 | REICHMANN Tobias | 2 | 3 | 67 | 0/1 | 0 | | 2/2 | | | | | | | | | | | | | | | | 28:27 |
| 10 | WIEDE Fabian | 2 | 5 | 40 | | | 1/3 | | 1/1 | | 0/1 | | | | | | | | | | | 3 | | 17:24 |
| 17 | ZERBE Lukas | 2 | 2 | 100 | | | | | | 2/2 | | | | | | | | | 1 | | | | | 30:00 |
| 18 | KOSTER Julian | 3 | 5 | 60 | | | 1/1 | | | | 2/4 | | | | | | | 5 | 2 / 2 | 1 | 1 | | | 39:50 |
| 20 | WEBER Philipp | 3 | 5 | 60 | | | 1/1 | | | | 2/4 | | | | | | | 2 | 1 | | | | | 23:27 |
| 34 | DAHMKKE Rune | | | | | | | | | | | | | | | | | | | | | | | 0:00 |
| 39 | STUTZKE Lukas | 1 | 3 | 33 | | | 0/1 | | | | 1/2 | | | | | | | | | | | 1 | | 11:40 |
| 40 | ERNST Simon | | | | | | | | | | | 1 | | | | | | | | | | | | 21:10 |
| 44 | STEINERT Christoph | 1 | 2 | 50 | | | 0/1 | | | | 1/1 | | | | | | | | / 1 | | | | 1 | 30:27 |
| 45 | REBMANN Daniel | | | | | | | | | | | | | | | | | | | | | | | 15:15 |
| 77 | SCHMIDT David | 1 | 2 | 50 | | | 0/1 | | | | 1/1 | | | | | | | | | | | | | 12:37 |
| 93 | ZIEKER Patrick | 2 | 3 | 67 | | | | 2/3 | | | | | | | | | | | | 1 | | | | 56:09 |
| 95 | DRUX Paul | 0 | 2 | 0 | | | | | 0/1 | | 0/1 | | | | | | 1 | | | | | 1 | | 14:56 |
| Team | | | | | | | | | | | | | | | | | | | | | | | | 1 |
| Totals | | 23 | 38 | 61 | 0/1 | 0 | 8/13 | 4/5 | 1/2 | 3/3 | | 7/14 | 1 | | 2 | | 15 | 1 | 5 / 4 | 1 | 2 | 1 | | |

| No. | Name | Total | | | All Saves / Shots | | | | | | | | | | |
|--------|-----------------|-------|-------|----|-------------------|-----|------|------|----|-----|-----|------|-----|------|-----|
| | | Saves | Shots | % | 7mP | 7m% | 6mC | Wing | BT | FB | FTO | 9m | 9m% | NS | NS% |
| 1 | BITTER Johannes | 10 | 31 | 32 | 0/1 | 0 | 2/12 | 4/7 | | 0/1 | | 4/10 | 40 | 6/19 | 32 |
| 45 | REBMANN Daniel | 2 | 9 | 22 | | | 2/3 | 0/3 | | | 0/3 | 0 | 2/6 | 33 | |
| Totals | | 12 | 40 | 30 | 0/1 | 0 | 4/15 | 4/10 | | 0/1 | | 4/13 | 31 | 8/25 | 32 |

Attacks

| Team | All | | Player Majority | | Player Minority | | Position Attacks | | FB | | Ind. FB | | Team FB | | TO | TO % |
|------|--------|----|-----------------|----|-----------------|---|------------------|----|--------|----|---------|---|---------|----|----|------|
| | G/Att. | % | G/Att. | % | G/Att. | % | G/Att. | % | G/Att. | % | G/Att. | % | G/Att. | % | | |
| GER | 23/46 | 50 | 4/5 | 80 | 0/2 | 0 | 20/42 | 48 | 3/4 | 75 | | | 3/4 | 75 | 9 | 20 |

Team Shots

| | Goals | Saves | Missed | Post | Blocked | Total | % | Prop % |
|-------------------|-------|-------|--------|------|---------|-------|--------|--------|
| 6m Shots | 8 | 3 | 1 | 1 | | 13 | 62 | 34 |
| Wing Shots | 4 | 1 | | | | 5 | 80 | 13 |
| L R | 2 2 | 1 | | | | 3 2 | 67 100 | 8 5 |
| 9m Shots | 7 | 6 | | 1 | | 14 | 50 | 37 |
| L C R | 7 | 6 | | 1 | | 14 | 50 | 0 37 0 |
| 7m Penalty Throws | | | | 1 | | 1 | 0 | 3 |
| Fast Breaks | 3 | | | | | 3 | 100 | 8 |
| Breakthroughs | 1 | 1 | | | | 2 | 50 | 5 |
| Totals | 23 | 11 | 1 | 3 | | 38 | 61 | 100 |

| Legend: | | | |
|---------|---------------------------|--------|---------------------------|
| % | Efficiency | 2M | 2-Minute Suspensions |
| 9m | 9-metre Shots | AS | Assists |
| EG | Empty Goal | FB | Fast Breaks |
| L | Left | NS | Near Shots |
| R | Right | RC | Red Cards |
| Wing | Wing Shots | YC | YC |
| 2+2 | 2+2 Minute Suspensions | 2+2 | 2+2 Minute Suspensions |
| BT | Breakthroughs | BS | Blocked Shots |
| FTO | Fast Throw off | FTO | Fast Throw off |
| P7 | Penalty 7-metre Fouls | P7 | Penalty 7-metre Fouls |
| ST | Steals | ST | Steals |
| 6mC | 6-metre Centre Shots | 6mC | 6-metre Centre Shots |
| 7mP | 7-metre Penalty Shots | 7mP | 7-metre Penalty Shots |
| BT | Breakthroughs | BT | Breakthroughs |
| C | Center | C | Center |
| G/Att. | Goals/Attacks | G/Att. | Goals/Attacks |
| Ind. | Individual | Ind. | Individual |
| Prop % | Proportion of Goals | Prop % | Proportion of Goals |
| R7 | Received 7-metre Fouls | R7 | Received 7-metre Fouls |
| TO/TF | Turnover/Technical Faults | TO/TF | Turnover/Technical Faults |
| TP | Time Played | TP | Time Played |

FRI 21 JAN 2022
Start Time: 20:30

Bratislava

Match Team Statistics

Match No: 53

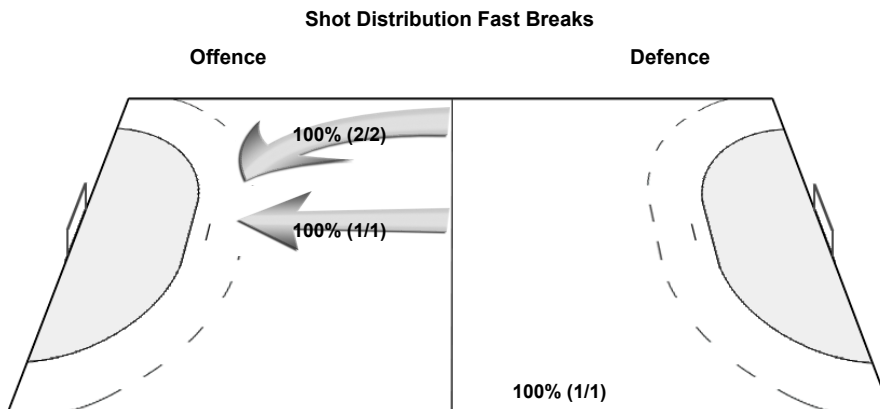
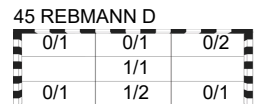
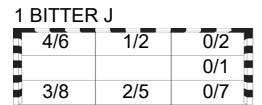
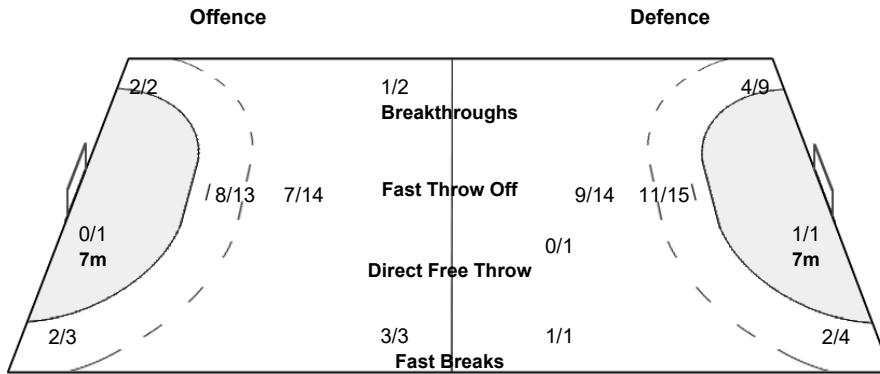
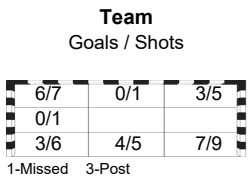
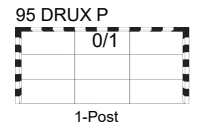
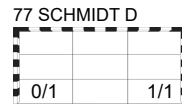
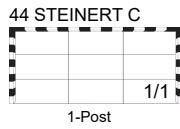
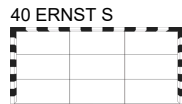
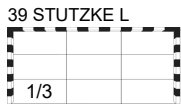
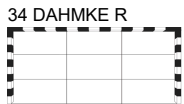
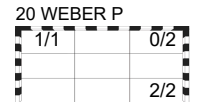
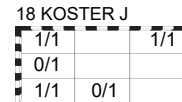
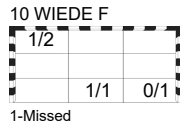
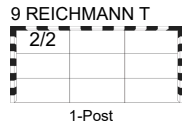
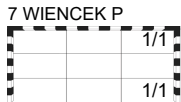
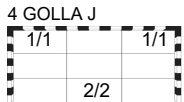
GER 23 - 28 NOR

(12 - 14) (11 - 14)

Referees: LAH Bojan (SLO) / SOK David (SLO)

GER - Germany

OverView of Shot Distribution



FRI 21 JAN 2022
Start Time: 20:30

Bratislava

Match Team Statistics

Match No: 53

GER 23 - 28 NOR

(12 - 14) (11 - 14)

Referees: LAH Bojan (SLO) / SOK David (SLO)

NOR - Norway

Coach: BERGE Christian

Time outs: 3

| No. | Name | Total | | | All Goals / Shots | | | | | | | Punishments | | | | Offence | | | Defence | | | TP |
|--------|--------------------------|-------|-------|-----|-------------------|-----|-------|------|----|-----|-----|-------------|-----|----|-----|---------|----|-------|---------|----|----|-------|
| | | Goals | Shots | % | 7mP | 7m% | 6mC | Wing | BT | FB | FTO | 9m | 9m% | NS | NS% | AS | R7 | TO/TF | ST | BS | P7 | |
| 3 | AGA Vetle Eck | | | | | | | | | | | | | | | | | | | | | 2:00 |
| 5 | SAGOSEN Sander | 4 | 9 | 44 | | | 3/3 | 0/1 | | | 1/5 | | | 1 | | 4 | | / 1 | | | | 37:03 |
| 6 | BARTHOLD Sebastian | 4 | 5 | 80 | 1/1 | 100 | | 2/3 | | 1/1 | | | | | | | | | 1 | | | 59:41 |
| 7 | OVERJORDET Sander | 2 | 4 | 50 | | | 2/3 | 0/1 | | | | | | | | | | | | | | 15:02 |
| 11 | OVERBY Petter | 1 | 1 | 100 | | | 1/1 | | | | | | | 1 | | 1 | | | 1 | | | 22:35 |
| 12 | SAEVERAAS Kristian | | | | | | | | | | | | | | | | | | | | | 0:00 |
| 13 | TOFT Erik Thorsteinsen | 7 | 10 | 70 | | | 2/3 | | | | 5/7 | | | 1 | | 1 | | | | | | 27:19 |
| 15 | TONNESEN Kent Robin | 1 | 5 | 20 | | | 0/1 | 1/4 | | | | | | | | 4 | | | | | | 36:54 |
| 19 | BJORNSEN Kristian | 3 | 4 | 75 | | | | 3/4 | | | | | | | | 1 | | | | | | 30:00 |
| 21 | GULLERUD Magnus | | | | | | | | | | | | | | | 2 | 1 | | | | | 27:25 |
| 24 | O'SULLIVAN Christian | 1 | 1 | 100 | | | 1/1 | | | | | | | | | 1 | | 1 | | | | 29:38 |
| 27 | REINKIND Harald | 3 | 4 | 75 | | | 0/1 | | | | 3/3 | | | | | 1 | | 1 | | | | 23:06 |
| 30 | BERGERUD Torbjørn Sitrup | | | | | | | | | | | | | | | | | | | | | 57:37 |
| 32 | SOLSTAD Thomas | 2 | 2 | 100 | | | 2/2 | | | | | | | | | 1 | | / 1 | | | | 21:40 |
| 44 | GULLIKSEN Kevin Maageroe | | | | | | | | | | | | | | | | | | | | 1 | 30:00 |
| 71 | BLONZ Alexandre | | | | | | | | | | | | | | | | | | | | | 0:00 |
| Totals | | 28 | 45 | 62 | 1/1 | 100 | 11/15 | 6/13 | | 1/1 | | 9/15 | | | 3 | 18 | 1 | 2 / 2 | 2 | | 1 | |

| No. | Name | Total | | | All Saves / Shots | | | | | | | | | | |
|--------|--------------------------|-------|-------|----|-------------------|-----|------|------|-----|-----|-----|------|-----|------|-----|
| | | Saves | Shots | % | 7mP | 7m% | 6mC | Wing | BT | FB | FTO | 9m | 9m% | NS | NS% |
| 12 | SAEVERAAS Kristian | | | | | | | | | | | | | | |
| 30 | BERGERUD Torbjørn Sitrup | 11 | 34 | 32 | | | 3/11 | 1/5 | 1/2 | 0/3 | | 6/13 | 46 | 5/18 | 28 |
| Totals | | 11 | 34 | 32 | | | 3/11 | 1/5 | 1/2 | 0/3 | | 6/13 | 46 | 5/18 | 28 |

Attacks

| Team | All | | Player Majority | | Player Minority | | Position Attacks | | FB | | Ind. FB | | Team FB | | TO | TO % |
|------|--------|----|-----------------|----|-----------------|----|------------------|----|--------|-----|---------|---|---------|-----|----|------|
| | G/Att. | % | G/Att. | % | G/Att. | % | G/Att. | % | G/Att. | % | G/Att. | % | G/Att. | % | | |
| NOR | 28/46 | 61 | 2/3 | 67 | 2/3 | 67 | 27/45 | 60 | 1/1 | 100 | | | 1/1 | 100 | 4 | 9 |

Team Shots

| | Goals | Saves | Missed | Post | Blocked | Total | % | Prop % |
|-------------------|-------|-------|--------|------|---------|-------|-------|--------|
| 6m Shots | 11 | 4 | | | | 15 | 73 | 33 |
| Wing Shots | 6 | 4 | 2 | | 1 | 13 | 46 | 29 |
| L R | 2 4 | 2 2 | 2 | | 1 | 4 9 | 50 44 | 9 20 |
| 9m Shots | 9 | 4 | 1 | | 1 | 15 | 60 | 33 |
| L C R | 9 | 4 | 1 | | | 14 | 64 | 0 31 0 |
| 7m Penalty Throws | 1 | | | | | 1 | 100 | 2 |
| Fast Breaks | 1 | | | | | 1 | 100 | 2 |
| Breakthroughs | | | | | | | | 0 |
| Totals | 28 | 12 | 3 | | 2 | 45 | 62 | 100 |

| Legend: | |
|------------------|---------------------------------|
| % Efficiency | 2M 2-Minute Suspensions |
| 9m 9-metre Shots | 2+2 2+2 Minute Suspensions |
| EG Empty Goal | AS Assists |
| L Left | BS Blocked Shots |
| R Right | FB Fast Breaks |
| Wing Wing Shots | NS Near Shots |
| | P7 Penalty 7-metre Fouls |
| | RC Red Cards |
| | ST Steals |
| | YC YC |
| | 2+2 2+2 Minute Suspensions |
| | BS Blocked Shots |
| | FTO Fast Throw off |
| | P7 Penalty 7-metre Fouls |
| | ST Steals |
| | 6mC 6-metre Centre Shots |
| | BT Breakthroughs |
| | G/Att. Goals/Attacks |
| | Prop % Proportion of Goals |
| | TO/TF Turnover/Technical Faults |
| | 7mP 7-metre Penalty Shots |
| | C Center |
| | Ind. Individual |
| | R7 Received 7-metre Fouls |
| | TP Time Played |

FRI 21 JAN 2022
Start Time: 20:30

Bratislava

Match Team Statistics

Match No: 53

GER 23 - 28 NOR

(12 - 14) (11 - 14)

Referees: LAH Bojan (SLO) / SOK David (SLO)

NOR - Norway

OverView of Shot Distribution

