

WED 21 JAN 2026
Start Time: 18:00

Preliminary Round - Group E

Start List

Malmö

Match No: 29

NED - GEO

Referees: HANSEN Mads (DEN) / MADSEN Jesper (DEN)
Reserve: BORICIC Marko (SRB) / MARKOVIC Dejan (SRB)
EHF Observer: TOGSTAD Øyvind (NOR)

EHF Supervisor: POPADIC Jovan (SRB)
Timekeeper: JOHANSSON Mattias (SWE)
Scorekeeper: BURZIC Samir (SWE)

NED - Netherlands

No.	Name	Pos.	Height m	Int. Matches		Competition Statistics									
				MP	G	MP	G	7mG	YC	2Min	RC	S	7mS		
11	POL Jorick	GK	1.99	15	0	2							3		
12	DORGELO Matthias Rex	GK	2.00	18	2	2							15		
3	STAVAST Ivar	CB	1.91	69	122	2	4			1					
5	TEN VELDE Rutger	LW	1.78	91	368	2	17	9							
14	SCHAGEN Bobby	RW	1.90	152	455	2	3								
15	KOOIJ Lars	P	1.99	43	105	2	9			2					
17	GEENEN Kaj	LW	1.86	39	40	2									
20	VERSTEIJNEN Niels	RB	2.00	69	192	2	7		1						
21	KLEIJKERS Martijn	P	1.88	26	37	2	1								
22	STEINS Luc	CB	1.73	129	374	2	4						1		
24	MANDERS Driek	P	1.97	7	6	2									
25	van DIJK Destin	LB	2.02	11	1	2									
26	van de VREEDE Bram	LB	1.98	5	2										
27	SMIT Alec	RW	1.82	69	84	2									
34	JANSEN Tom	RB	1.99	36	52	2									
97	TABOADA Reinier	LB	1.92	7	20	2	9		1	3					
(NN)	BAIJENS Dani	LB	1.82	104	326	2	6								
(NN)	SKWARCZYNSKI Marek	RB	1.92	2	0										
Headcoach		OLSSON Staffan (SWE)		Bench/Team											

NED Played		
PR	SWE	31-36
PR	CRO	29-35
PR	GEO	21 JAN

GEO - Georgia

No.	Name	Pos.	Height m	Int. Matches		Competition Statistics									
				MP	G	MP	G	7mG	YC	2Min	RC	S	7mS		
1	RUKHADZE Gigi	GK	1.85	2	0	2									
12	TSINTSADZE Zurab	GK	1.85	30	5	2							15	1	
87	NIKABADZE David	GK	1.99	18	1	2							4		
3	LAPIASHVILI George	P	1.95	24	14	2	1			1					
5	KHELISUPALI Vakhtang	LW	1.90	4	2	2									
7	RUSTAMOV Khazein	LW	1.80	36	59	2	8								
8	KHAREBASHVILI Vakhtang	RB	1.90	5	0	2									
9	ARESHIDZE Giorgi	CB	1.90	6	5	2	1								
10	KBILASHVILI Irakli	CB	1.89	40	128	2	6			1					
11	TSKHOVREBADZE Giorgi	RB	1.94	35	255	2	18	4							
27	KALANDADZE Nikoloz	LB	1.98	16	45	2	10								
28	GRISHIKASHVILI Davit	LB	1.98	4	0	2									
34	GAVASHELISHVILI Miriani	LB	1.97	28	16	2	5								
71	DIKHAMINJIA Giorgi	RW	1.88	46	110	2	9								
(NN)	ARSENASHVILI Erekle	P	1.97	34	105	2						2			
(NN)	GOGAVA Zurabi	RB	1.96	18	2	2						1			
Headcoach		KALANDADZE Tite		Bench/Team											

GEO Played		
PR	CRO	29-32
PR	SWE	29-38
PR	NED	21 JAN

Notes:
Players below the bold line are not playing in this match.

Legend:			
(NN)	Not nominated	2Min	2-Minute Suspensions
CB	Centre Back	G	Goals
LW	Left Wing	MP	Matches Played
PR	Preliminary Round	RB	Right Back
RW	Right Wing	S	Saves
		7mG	7-metre Goals
		GK	Goalkeeper
		P	Line Player
		RC	Red Cards (Direct and after 3rd 2-Minute Suspension)
		YC	Yellow Cards
		7mS	7-metre Saves
		LB	Left Back
		Pos	Position

OFFICIAL PARTNERS



EHF PARTNERS



NATIONAL SUPPLIERS



Results

Malmö

Match No: 29

Attendance: 6.835

NED 31 - 26 GEO

(18 - 15) (13 - 11)

Referees: HANSEN Mads (DEN) / MADSEN Jesper (DEN)

Netherlands

Coach: OLSSON Staffan

Time outs: 2

No.	Name	Total		Goals / Shots							Punishments			TP	
		G/S	%	7m	6m	Wing	BT	FB	FTO	9m	EG	YC	RC		2M
3	STAVAST Ivar	8/9	89				4/4	1/1	1/1	2/3					45:04
5	TEN VELDE Rutger	7/8	88	3/4		1/1		3/3							46:01
11	POL Jorick														39:09
12	DORGELO Matthias Rex														20:06
14	SCHAGEN Bobby	4/5	80			2/2		0/1	1/1	1/1					43:23
15	KOOIJ Lars	1/2	50		0/1			1/1							43:45
17	GEENEN Kaj														4:01
20	VERSTEIJNEN Niels	2/4	50		1/2		1/1			0/1		1	1		55:47
21	KLEIJKERS Martijn														15:04
22	STEINS Luc	2/4	50		1/1		1/3								51:18
24	MANDERS Driek														0:17
25	van DIJK Destin														
26	van de VREEDE Bram														
27	SMIT Alec														1:35
34	JANSEN Tom														6:03
97	TABOADA Reinier	7/8	88				2/2	3/3	1/1	1/2					46:27
	Totals	31/40	78	3/4	2/4	3/3	8/10	8/9	3/3	4/7		1	1		60:00

No.	Name	Total		Saves / Shots						
		S/S	%	7m	6m	Wing	BT	FB	FTO	9m
11	POL Jorick	8/22	36	0/3	4/9	0/1	1/3	1/1		2/5
12	DORGELO Matthias Rex	1/13	8	0/1	0/3	0/1		0/1		1/7
	Totals	9/35	26	0/4	4/12	0/2	1/3	1/2		3/12

Georgia

Coach: KALANDADZE Tite

YC/RC Bench Officials: 1/0 Time outs: 3

No.	Name	Total		Goals / Shots							Punishments			TP	
		G/S	%	7m	6m	Wing	BT	FB	FTO	9m	EG	YC	RC		2M
1	RUKHADZE Gigi														
3	LAPIASHVILI George	4/6	67		4/6										60:00
5	KHELISUPALI Vakhtang														
7	RUSTAMOV Khazein														58:49
8	KHAREBASHVILI Vakhtang														
9	ARESHIDZE Giorgi	0/2	0				0/1			0/1					4:36
10	KBILASHVILI Irakli	2/3	67				1/1			1/2					42:05
11	TSKHVREBADZE Giorgi	11/17	65	4/4	1/1					6/12					49:27
12	TSINTSADZE Zurab														55:05
27	KALANDADZE Nikoloz	2/4	50		0/1					2/3					48:14
28	GRISHIKASHVILI Davit														
34	GAVASHELISHVILI Miriani	1/3	33		0/1		1/1			0/1					37:41
71	DIKHAMINJIA Giorgi	6/9	67		3/4	2/2		1/3					1		57:30
87	NIKABADZE David														4:33
	Bench Officials											1			
	Totals	26/44	59	4/4	8/13	2/2	2/3	1/3		9/19		1	1		60:00

No.	Name	Total		Saves / Shots						
		S/S	%	7m	6m	Wing	BT	FB	FTO	9m
1	RUKHADZE Gigi									
12	TSINTSADZE Zurab	6/36	17	1/3	1/3	0/3	2/10	1/9	0/3	1/5
87	NIKABADZE David	1/2	50	0/1						1/1
	Totals	7/38	18	1/4	1/3	0/3	2/10	1/9	0/3	2/6

Attacks

Team:	All		Player Majority		Player Minority		Position Attacks		FB		Ind. FB		Team FB		Att. Dur. (min)	Turnover		
	G/Att.	%	G/Att.	%	G/Att.	%	G/Att.	%	G/Att.	%	G/Att.	%	G/Att.	%		All	%	TOFB
NED	31/51	61	2/2	100	0/1	0	20/39	51	8/9	89	1/1	100	7/8	88	0:27	12	24	0
GEO	26/51	51	2/2	100	0/1	0	25/48	52	1/3	33			1/3	33	0:42	16	31	0

Legend:	
%	Efficiency
Att. Dur.	Average Attack Duration
G/Att.	Goals/Attacks
RC	Red Cards (Direct and after Third 2-Minute Suspension)
TOFB	Turnover during Fast Breaks
2M	2-Minute Suspensions
BT	Breakthroughs
G/S	Goals/Shots
No.	Uniform Number
S/S	Saves/Shots
TP	Time Played
7m	7-metre Penalty Shots
FB	Fast Breaks
No.	Uniform Number
S/S	Saves/Shots
Wing	Wing Shots
9m	9-metre Shots
FTO	Fast Throw off

OFFICIAL PARTNERS



EHF PARTNERS



NATIONAL SUPPLIERS



Match No: 29

Match Team Statistics

NED 31 - 26 GEO

(18 - 15) (13 - 11)

Referees: HANSEN Mads (DEN) / MADSEN Jesper (DEN)

NED - Netherlands Coach: OLSSON Staffan (SWE)

Time outs: 2

No.	Name	Total		All Goals / Shots								Punishments				Offence			Defence			TP	
		G/S	%	7m	7m%	6m	Wing	BT	FB	FTO	9m	EG	YC	RC	2M	2+2	AS	R7	TO/TF	ST	BS		P7
3	STAVAST Ivar	8/9	89					4/4	1/1	1/1	2/3						1	1	1 / 1			1	45:04
5	TEN VELDE Rutger	7/8	88	3/4	75				1/1									/ 1					46:01
11	POL Jorick																						39:09
12	DORGELO Matthias Rex																						20:06
14	SCHAGEN Bobby	4/5	80				2/2		0/1	1/1	1/1												43:23
15	KOOIJ Lars	1/2	50			0/1				1/1								2 / 1		2	1		43:45
17	GEENEN Kaj																						4:01
20	VERSTEIJNEN Niels	2/4	50			1/2		1/1			0/1		1	1			8	1	2			4	55:47
21	KLEIJKERS Martijn																	/ 1					15:04
22	STEINS Luc	2/4	50			1/1		1/3									3	1	1				51:18
24	MANDERS Driek																						0:17
25	van DIJK Destin																						
26	van de VREEDE Bram																						
27	SMIT Alec																						1:35
34	JANSEN Tom																						6:03
97	TABOADA Reinier	7/8	88					2/2	3/3	1/1	1/2						2	1	1 / 1	4	1	1	46:27
Totals		31/40	78	3/4	75	2/4	3/3	8/10	8/9	3/3	4/7		1	1			14	4	7 / 5	4	7	4	

No.	Name	Total		All Saves / Shots									
		S/S	%	7m	7m%	Near Shots			FB	FTO	9m	9m%	
				All	All%	6m	Wing	BT					
11	POL Jorick	8/22	36	0/3	0	5/13	38	4/9	0/1	1/3	1/1	2/5	40
12	DORGELO Matthias Rex	1/13	8	0/1	0	0/4	0	0/3	0/1	0/1	0/1	1/7	14
Totals		9/35	26	0/4	0	5/17	29	4/12	0/2	1/3	1/2	3/12	25

Attacks

Team	All		Player Majority		Player Minority		Position Attacks		FB		Ind. FB		Team FB		Att. Dur. (min)	Turnover		
	G/Att.	%	G/Att.	%	G/Att.	%	G/Att.	%	G/Att.	%	G/Att.	%	G/Att.	%		All	%	TOFB
NED	31/51	61	2/2	100	0/1	0	20/39	51	8/9	89	1/1	100	7/8	88	0:27	12	24	0

Team Shots

	Goals	Saves	Missed	Post	Blocked	Total	G/S %	Prop %
6m Shots	2	1	1			4	50	10
Wing Shots	3					3	100	8
L R	1 2					1 2	100 100	3 5
9m Shots	4	2			1	7	57	18
L C R	2 2	2			1	2 5	100 40	5 13 0
7m Penalty Throws	3	1				4	75	10
Fast Breaks	8	1				9	89	23
Breakthroughs	8	2				10	80	25
Fast Throw Offs	3					3	100	8
Empty Goals								0
Totals	31	7	1		1	40	78	100

Legend:			
%	Efficiency	2M	2-Minute Suspensions
9m	9-metre Shots	AS	Assists
C	Center	EG	Empty Goal
G/S	Goals/Shots	Ind.	Individual
R7	Received 7-metre Fouls	R	Right
ST	Steals	TO/TF	Turnover/Technical Fouls
Wing	Wing Shots	YC	Yellow Cards
2+2	2+2 Minute Suspensions	6m	6-metre Shots
Att. Dur.	Average Attack Duration	BS	Blocked Shots
FB	Fast Breaks	FTO	Fast Throw off
L	Left	P7	Penalty 7-metre Fouls
RC	Red Cards (Direct and after 3rd 2-Minute Suspension)	S/S	Saves/Shots
TOFB	Turnover during Fast Breaks	TP	Time Played

OFFICIAL PARTNERS



EHF PARTNERS



NATIONAL SUPPLIERS



Preliminary Round - Group E

Malmö

Match No: 29

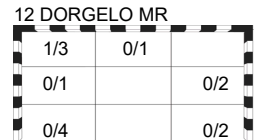
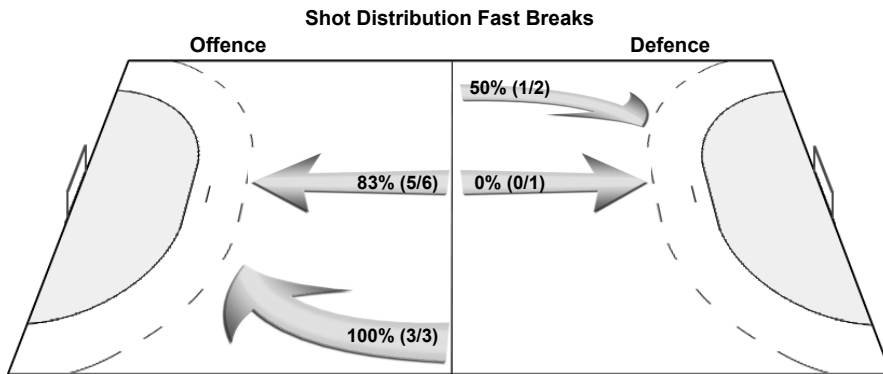
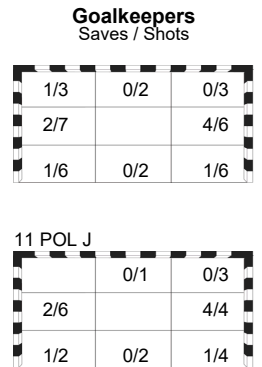
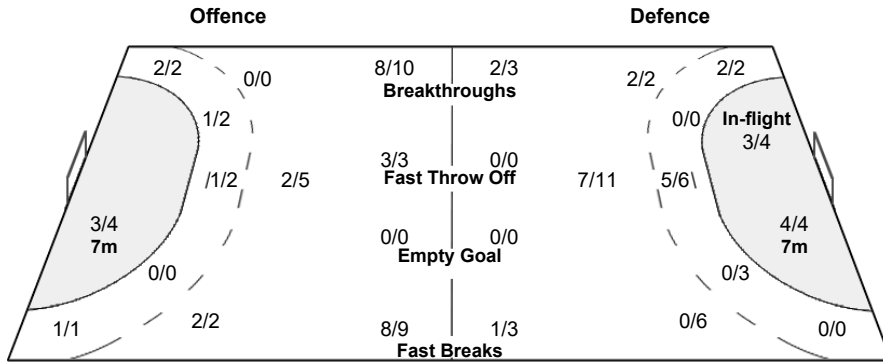
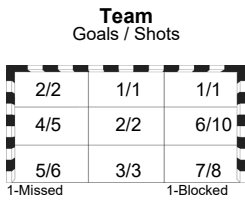
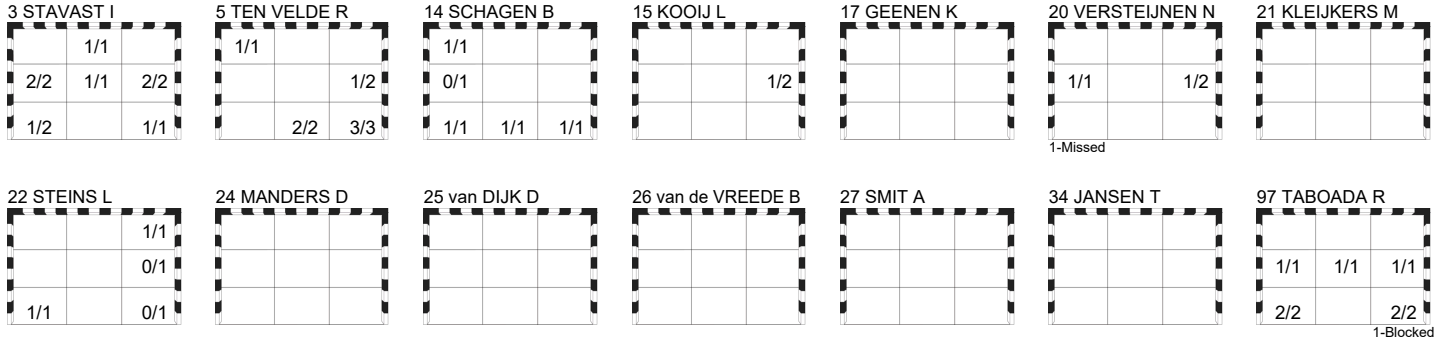
Match Team Statistics

NED 31 - 26 GEO
(18 - 15) (13 - 11)

Referees: HANSEN Mads (DEN) / MADSEN Jesper (DEN)

NED - Netherlands

Overview of Shot Distribution



OFFICIAL PARTNERS



EHF PARTNERS



NATIONAL SUPPLIERS



Match No: 29

Match Team Statistics

NED 31 - 26 GEO

(18 - 15) (13 - 11)

Referees: HANSEN Mads (DEN) / MADSEN Jesper (DEN)

GEO - Georgia

Coach: KALANDADZE Tite

YC/RC Bench Officials:1/0 Time outs: 3

No.	Name	Total		All Goals / Shots							Punishments				Offence			Defence			TP				
		G/S	%	7m	7m%	6m	Wing	BT	FB	FTO	9m	EG	YC	RC	2M	2+2	AS	R7	TO/TF	ST		BS	P7		
1	RUKHADZE Gigi																								
3	LAPIASHVILI George	4/6	67			4/6											1	1	1		1	1	60:00		
5	KHELISUPALI Vakhtang																								
7	RUSTAMOV Khazein																					1	58:49		
8	KHAREBASHVILI Vakhtang																								
9	ARESHIDZE Giorgi	0/2	0							0/1													4:36		
10	KBILASHVILI Irakli	2/3	67							1/1							1	1	2				42:05		
11	TSKHOVREBADZE Giorgi	11/17	65	4/4	100	1/1											4		2 / 1				49:27		
12	TSINTSADZE Zurab																						55:05		
27	KALANDADZE Nikoloz	2/4	50			0/1											6	2	3 / 1			1	48:14		
28	GRISHIKASHVILI Davit																								
34	GAVASHELISHVILI Miriani	1/3	33			0/1				1/1												1	37:41		
71	DIKHAMINJIA Giorgi	6/9	67			3/4	2/2							1								1	57:30		
87	NIKABADZE David																						4:33		
Bench/Team																	1								
Totals		26/44	59	4/4	100	8/13	2/2	2/3	1/3					9/19			1		1	14	4	12 / 4	1	1	4

No.	Name	Total		All Saves / Shots										
		S/S	%	7m	7m%	Near Shots				FB	FTO	9m	9m%	
				All	All%	6m	Wing	BT						
1	RUKHADZE Gigi													
12	TSINTSADZE Zurab	6/36	17	1/3	33	3/16	19	1/3	0/3	2/10	1/9	0/3	1/5	20
87	NIKABADZE David	1/2	50	0/1	0								1/1	100
Totals		7/38	18	1/4	25	3/16	19	1/3	0/3	2/10	1/9	0/3	2/6	33

Attacks

Team	All		Player Majority		Player Minority		Position Attacks		FB		Ind. FB		Team FB		Att. Dur. (min)	Turnover		
	G/Att.	%	G/Att.	%	G/Att.	%	G/Att.	%	G/Att.	%	G/Att.	%	G/Att.	%		All	%	TOFB
GEO	26/51	51	2/2	100	0/1	0	25/48	52	1/3	33			1/3	33	0:42	16	31	0

Team Shots

	Goals	Saves	Missed	Post	Blocked	Total	G/S %	Prop %
6m Shots	8	4			1	13	62	30
Wing Shots	2					2	100	5
L R	2					2	100	0 5
9m Shots	9	3	1		6	19	47	43
L C R	7 2	1 2	1		4 2	6 11 2	0 64 100	14 25 5
7m Penalty Throws	4					4	100	9
Fast Breaks	1	1		1		3	33	7
Breakthroughs	2	1				3	67	7
Fast Throw Offs								0
Empty Goals								0
Totals	26	9	1	1	7	44	59	100

Legend:			
%	Efficiency	2M	2-Minute Suspensions
9m	9-metre Shots	2+2	2+2 Minute Suspensions
C	Center	Att. Dur.	Average Attack Duration
G/S	Goals/Shots	AS	Assists
R7	Received 7-metre Fouls	EG	Empty Goal
ST	Steals	Ind.	Individual
Wing	Wing Shots	R	Right
		TO/TF	Turnover/Technical Fouls
		RC	Red Cards (Direct and after 3rd 2-Minute Suspension)
		YC	Yellow Cards
		6m	6-metre Shots
		BS	Blocked Shots
		FTO	Fast Throw off
		P7	Penalty 7-metre Fouls
		G/Att.	Goals/Attacks
		Prop %	Proportion of Shots
		S/S	Saves/Shots
		TP	Time Played
		TOFB	Turnover during Fast Breaks

OFFICIAL PARTNERS



EHF PARTNERS



NATIONAL SUPPLIERS



Match Team Statistics

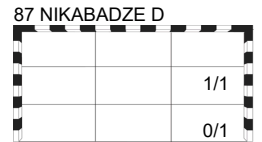
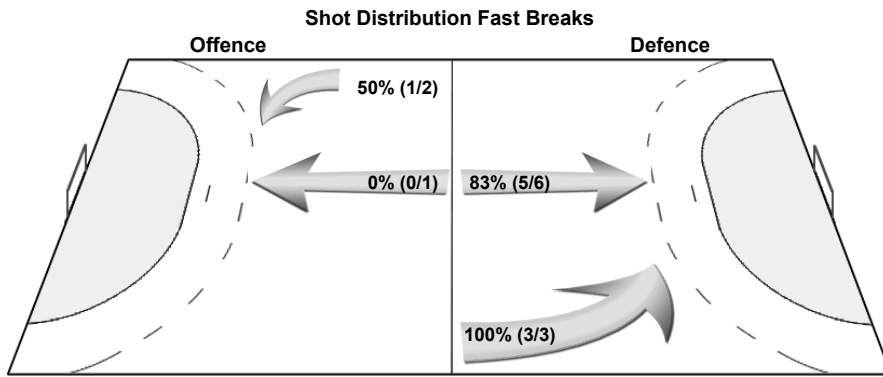
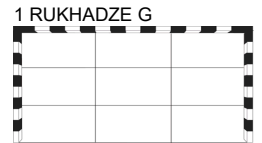
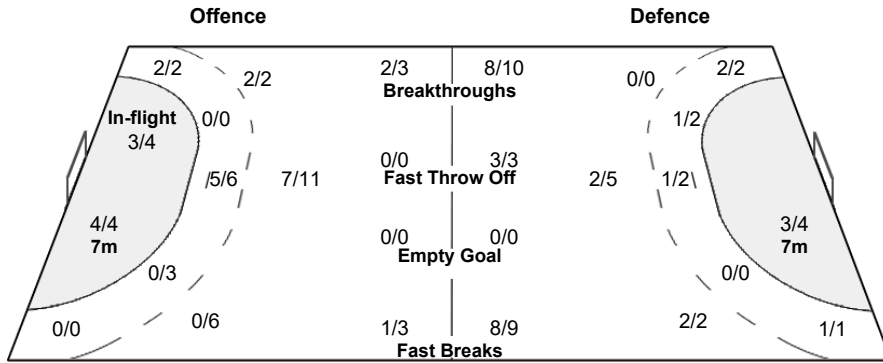
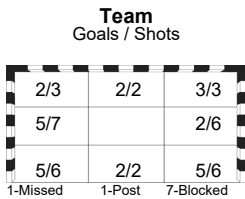
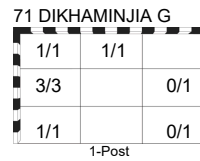
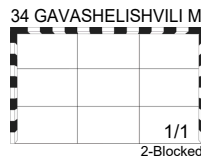
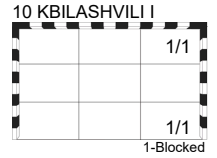
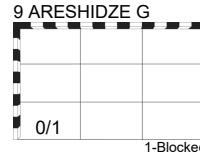
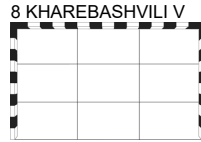
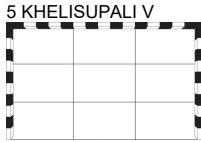
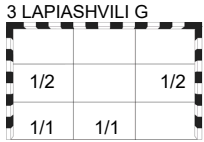
Match No: 29

NED 31 - 26 GEO
(18 - 15) (13 - 11)

Referees: HANSEN Mads (DEN) / MADSEN Jesper (DEN)

GEO - Georgia

Overview of Shot Distribution



OFFICIAL PARTNERS



EHF PARTNERS



NATIONAL SUPPLIERS



Match No: 29

Play by Play

NED 31 - 26 GEO

(18 - 15) (13 - 11)

Referees: HANSEN Mads (DEN) / MADSEN Jesper (DEN)

NED 3 STAVAST Ivar	5 TEN VELDE Rutger	11 POL Jorick	A WONG Wai
12 DORGELO Matthias Rex	14 SCHAGEN Bobby	15 KOOIJ Lars	B OLSSON Staffan
17 GEENEN Kaj	20 VERSTEIJNEN Niels	21 KLEIJKERS Martijn	C EIJLERS Gerrie
22 STEINS Luc	24 MANDERS Driek	25 van DIJK Destin	D BAARDSE Robert
26 van de VREEDE Bram	27 SMIT Alec	34 JANSEN Tom	E DEKKER Rian
97 TABOADA Reinier			
GEO 1 RUKHADZE Gigi	3 LAPIASHVILI George	5 KHELISUPALI Vakhtang	A TEVZADZE Shota
7 RUSTAMOV Khazein	8 KHAREBASHVILI Vakhtang	9 ARESHIDZE Giorgi	B KALANDADZE Tite
10 KBILASHVILI Irakli	11 TSKHOVREBADZE Giorgi	12 TSINTSADZE Zurab	C METREVELI Merab
27 KALANDADZE Nikoloz	28 GRISHIKASHVILI Davit	34 GAVASHELISHVILI Miriani	D BAGATURIA Dimitri
71 DIKHAMINJIA Giorgi	87 NIKABADZE David		E KHACHIDZE Saba

1st HALF

Match Time	NED - Netherlands	Score	Lead	GEO - Georgia
0:00	12 DORGELO MR Goalkeeper			12 TSINTSADZE Z Goalkeeper
0:37	5 TEN VELDE R Goal left wing bottom centre (22 STEINS L), 94.80 km/h	1 - 0	+1	
1:20		1 - 1	0	27 KALANDADZE N Goal centre 9m bottom left, 109.55 km/h
1:30	22 STEINS L Shot breakthrough saved middle right			
1:38				34 GAVASHELISHVILI M Turnover
1:46	15 KOOIJ L Goal fast break middle right (20 VERSTEIJNEN N), 93.19 km/h	2 - 1	+1	
2:32		2 - 2	0	3 LAPIASHVILI G Goal centre 6m bottom left (11 TSKHOVREBADZE G), 85.14 km/h
3:19	15 KOOIJ L Shot centre 6m saved middle right			
3:58		2 - 3	-1	11 TSKHOVREBADZE G Goal centre 9m bottom left, 112.05 km/h
4:05	3 STAVAST I Goal fast throw off middle centre, 87.14 km/h	3 - 3	0	
4:14	97 TABOADA R Steal			34 GAVASHELISHVILI M Turnover
4:19	5 TEN VELDE R Goal fast break bottom right (97 TABOADA R), 95.50 km/h	4 - 3	+1	
5:32		4 - 4	0	71 DIKHAMINJIA G Goal centre 6m middle left (27 KALANDADZE N), 89.11 km/h
6:01	3 STAVAST I Goal left 9m middle right, 112.28 km/h	5 - 4	+1	
6:28	20 VERSTEIJNEN N Warning (yellow card)			
6:41				27 KALANDADZE N Shot left 9m saved top left
7:05		5 - 5	0	11 TSKHOVREBADZE G Goal centre 9m middle right, 112.69 km/h
7:16	14 SCHAGEN B Goal fast throw off bottom centre (20 VERSTEIJNEN N), 79.00 km/h	6 - 5	+1	
8:19		6 - 6	0	11 TSKHOVREBADZE G Goal right 9m top left, 113.01 km/h
8:29	22 STEINS L 7m received			27 KALANDADZE N 7m caused
8:40	5 TEN VELDE R Penalty shot saved middle right			
9:23				3 LAPIASHVILI G Turnover
9:40	14 SCHAGEN B for 12 DORGELO MR Empty goal			
9:43	12 DORGELO MR for 97 TABOADA R Goalkeeper back			
10:07	22 STEINS L Shot breakthrough saved bottom right			
10:31	20 VERSTEIJNEN N Block			11 TSKHOVREBADZE G Shot centre 9m blocked
11:00		6 - 7	-1	11 TSKHOVREBADZE G Goal centre 9m top centre, 117.21 km/h
11:49	3 STAVAST I Shot centre 9m saved bottom left			
12:18				10 KBILASHVILI I Shot left 9m blocked
12:27	3 STAVAST I Goal fast break bottom left, 95.42 km/h	7 - 7	0	
13:00		7 - 8	-1	3 LAPIASHVILI G Goal centre 6m middle right (34 GAVASHELISHVILI M), 81.27 km/h
13:33	3 STAVAST I Goal breakthrough middle right, 100.90 km/h	8 - 8	0	
14:43				7 RUSTAMOV K Technical Fault
15:15	3 STAVAST I Turnover			
15:22				71 DIKHAMINJIA G Shot fast break post
16:14	20 VERSTEIJNEN N Turnover			
16:23		8 - 9	-1	71 DIKHAMINJIA G Goal fast break top left (11 TSKHOVREBADZE G), 103.46 km/h
16:52	21 KLEIJKERS M Technical Fault			

OFFICIAL PARTNERS



EHF PARTNERS



NATIONAL SUPPLIERS



Match No: 29

Play by Play

NED 31 - 26 GEO

(18 - 15) (13 - 11)

1st HALF

Match Time	NED - Netherlands	Score	Lead	GEO - Georgia
17:45		8 - 10	-2	11 TSKHOVREBADZE G Goal right 9m bottom right, 110.81 km/h
17:54	97 TABOADA R Goal fast throw off bottom right, 100.33 km/h	9 - 10	-1	
18:52				27 KALANDADZE N Turnover
19:01	97 TABOADA R Goal fast break middle right (20 VERSTEIJNEN N), 113.32 km/h	10 - 10	0	
19:45		10 - 11	-1	71 DIKHAMINJIA G Goal right wing bottom left, 87.54 km/h
19:53	11 POL J for 12 DORGELO MR Goalkeeper Substitution			
20:15	14 SCHAGEN B Goal right wing top left (20 VERSTEIJNEN N), 85.59 km/h	11 - 11	0	
20:47		11 - 12	-1	27 KALANDADZE N Goal centre 9m bottom left, 103.67 km/h
22:02	20 VERSTEIJNEN N Goal right 6m middle left (22 STEINS L), 97.44 km/h	12 - 12	0	
23:27		12 - 13	-1	3 LAPIASHVILI G Goal centre 6m middle left (27 KALANDADZE N), 87.89 km/h
23:37	97 TABOADA R 7m received			71 DIKHAMINJIA G 7m caused
23:37				71 DIKHAMINJIA G 2-minutes suspension
23:37	5 TEN VELDE R Goal Penalty shot middle right (97 TABOADA R), 101.37 km/h	13 - 13	0	
23:57				10 KBILASHVILI I for 12 TSINTSADZE Z Empty goal
24:02				Team timeout
24:19				34 GAVASHELISHVILI M Technical Fault
24:19				12 TSINTSADZE Z for 7 RUSTAMOV K Goalkeeper back
24:28	3 STAVAST I Goal breakthrough middle left, 101.37 km/h	14 - 13	+1	
25:37				B KALANDADZE T Warning (yellow card) bench punishment
26:12	97 TABOADA R Goal centre 9m middle centre, 111.98 km/h	15 - 13	+2	
26:46				27 KALANDADZE N Turnover
26:54	5 TEN VELDE R Goal fast break bottom right (20 VERSTEIJNEN N), 97.51 km/h	16 - 13	+3	
27:22	97 TABOADA R Steal			11 TSKHOVREBADZE G Turnover
27:32	14 SCHAGEN B for 11 POL J Empty goal			
27:32	11 POL J for 3 STAVAST I Goalkeeper back			
27:52	97 TABOADA R Goal breakthrough bottom left, 90.96 km/h	17 - 13	+4	
28:29		17 - 14	+3	11 TSKHOVREBADZE G Goal centre 9m top right, 90.70 km/h
28:37	14 SCHAGEN B for 11 POL J Empty goal			
28:43	11 POL J for 3 STAVAST I Goalkeeper back			
28:43	Team timeout			
28:59	22 STEINS L Goal centre 6m bottom left (20 VERSTEIJNEN N), 63.75 km/h	18 - 14	+4	
29:43				3 LAPIASHVILI G Shot left 6m saved middle left
29:56		18 - 15	+3	10 KBILASHVILI I Goal centre 9m bottom right, 86.72 km/h

2nd HALF

Match Time	NED - Netherlands	Score	Lead	GEO - Georgia
30:00	11 POL J Goalkeeper			12 TSINTSADZE Z Goalkeeper
30:38	97 TABOADA R Steal			10 KBILASHVILI I Turnover
30:44	97 TABOADA R Goal fast break bottom left, 108.30 km/h	19 - 15	+4	
31:00				27 KALANDADZE N Shot left 6m saved middle left
31:38	3 STAVAST I Goal centre 9m bottom right, 102.22 km/h	20 - 15	+5	
31:52				27 KALANDADZE N Technical Fault
32:04	15 KOOIJ L Technical Fault			
32:33	15 KOOIJ L 7m caused			10 KBILASHVILI I 7m received
32:50		20 - 16	+4	11 TSKHOVREBADZE G Goal Penalty shot top right (10 KBILASHVILI I), 94.78 km/h
33:32	3 STAVAST I 7m received			34 GAVASHELISHVILI M 7m caused
33:44	5 TEN VELDE R Goal Penalty shot bottom centre (3 STAVAST I), 103.02 km/h	21 - 16	+5	
34:27		21 - 17	+4	71 DIKHAMINJIA G Goal flying throw top centre (7 RUSTAMOV K), 88.70 km/h
35:01	15 KOOIJ L Turnover			3 LAPIASHVILI G Steal
35:08				71 DIKHAMINJIA G Shot fast break saved bottom right

OFFICIAL PARTNERS



EHF PARTNERS



NATIONAL SUPPLIERS



Match No: 29

Play by Play
NED 31 - 26 GEO
(18 - 15) (13 - 11)

2nd HALF

Match Time	NED - Netherlands	Score	Lead	GEO - Georgia
35:18	5 TEN VELDE R Technical Fault			
35:54		21 - 18	+3	71 DIKHAMINJIA G Goal right wing middle left (11 TSKHOVREBADZE G), 106.68 km/h
36:46	15 KOOIJ L Turnover			
36:59				11 TSKHOVREBADZE G Shot centre 9m saved middle right
37:55	3 STAVAST I Goal breakthrough middle left, 108.21 km/h	22 - 18	+4	
38:33		22 - 19	+3	34 GAVASHELISHVILI M Goal breakthrough bottom right, 92.40 km/h
38:49	97 TABOADA R Goal breakthrough middle left, 100.96 km/h	23 - 19	+4	
39:39	20 VERSTEIJNEN N Block			34 GAVASHELISHVILI M Shot left 6m blocked
39:55				3 LAPIASHVILI G Shot centre 6m saved middle right
40:05	14 SCHAGEN B Goal right wing bottom left (20 VERSTEIJNEN N), 91.29 km/h	24 - 19	+5	
40:37				9 ARESHIDZE G Shot breakthrough saved bottom left
40:54	97 TABOADA R Steal			34 GAVASHELISHVILI M Turnover
41:00	97 TABOADA R Goal individual fast break bottom right, 94.20 km/h	25 - 19	+6	
41:49	15 KOOIJ L Block			34 GAVASHELISHVILI M Shot centre 9m blocked
42:05	15 KOOIJ L Block			9 ARESHIDZE G Shot left 9m blocked
42:44	97 TABOADA R Block			11 TSKHOVREBADZE G Shot left 9m blocked
43:00				11 TSKHOVREBADZE G Technical Fault
43:32	20 VERSTEIJNEN N Shot right 6m missed			
44:17				11 TSKHOVREBADZE G Shot left 9m missed
44:27	22 STEINS L Goal breakthrough top right, 82.58 km/h	26 - 19	+7	
44:36				Team timeout
44:53				11 TSKHOVREBADZE G Turnover
44:59	14 SCHAGEN B Shot fast break saved middle left			
45:08	20 VERSTEIJNEN N 2-minutes suspension			
45:27	3 STAVAST I 7m caused			3 LAPIASHVILI G 7m received
45:40		26 - 20	+6	11 TSKHOVREBADZE G Goal Penalty shot bottom centre (3 LAPIASHVILI G), 82.07 km/h
46:02	15 KOOIJ L for 11 POL J Empty goal			
46:36	97 TABOADA R Turnover			
46:36	11 POL J for 5 TEN VELDE R Goalkeeper back			
46:58		26 - 21	+5	11 TSKHOVREBADZE G Goal flying throw middle left (27 KALANDADZE N), 95.89 km/h
47:10	5 TEN VELDE R for 11 POL J Empty goal			
47:12	11 POL J for 20 VERSTEIJNEN N Goalkeeper back			
47:33	22 STEINS L Turnover			
48:06				10 KBILASHVILI I Turnover
48:16	97 TABOADA R Shot centre 9m blocked			3 LAPIASHVILI G Block
48:39	14 SCHAGEN B Goal left 9m bottom right, 103.34 km/h	27 - 21	+6	
49:03				27 KALANDADZE N 7m received
49:07	12 DORGELO MR for 11 POL J Goalkeeper Substitution			
49:07		27 - 22	+5	11 TSKHOVREBADZE G Goal Penalty shot bottom right (27 KALANDADZE N)
49:23	11 POL J for 12 DORGELO MR Goalkeeper Substitution			
49:40	97 TABOADA R Technical Fault			
50:13				27 KALANDADZE N Turnover
50:19	5 TEN VELDE R Goal fast break top left (22 STEINS L), 93.98 km/h	28 - 22	+6	
51:40	20 VERSTEIJNEN N Block			11 TSKHOVREBADZE G Shot left 9m blocked
51:49				11 TSKHOVREBADZE G Shot centre 9m saved middle right
52:29	Team timeout			
52:43	20 VERSTEIJNEN N Turnover			
52:48				34 GAVASHELISHVILI M Turnover
52:54	3 STAVAST I Technical Fault			
53:15		28 - 23	+5	71 DIKHAMINJIA G Goal flying throw middle left (27 KALANDADZE N), 104.75 km/h
53:38	20 VERSTEIJNEN N Goal breakthrough middle right, 89.28 km/h	29 - 23	+6	
54:09		29 - 24	+5	10 KBILASHVILI I Goal breakthrough top right, 91.27 km/h

OFFICIAL PARTNERS



EHF PARTNERS



NATIONAL SUPPLIERS



Match No: 29

Play by Play
NED 31 - 26 GEO
(18 - 15) (13 - 11)

2nd HALF

Match Time	NED - Netherlands	Score Lead	GEO - Georgia
55:15	3 STAVAST I Goal breakthrough top centre, 95.74 km/h	30 - 24 +6	
55:27			87 NIKABADZE D for 12 TSINTSADZE Z Goalkeeper Substitution
55:54		30 - 25 +5	3 LAPIASHVILI G Goal centre 6m bottom centre (11 TSKHOVREBADZE G), 59.59 km/h
56:28	20 VERSTEIJNEN N 7m received		
56:43	5 TEN VELDE R Goal Penalty shot bottom right (20 VERSTEIJNEN N), 98.84 km/h	31 - 25 +6	
56:52			Team timeout
57:34	97 TABOADA R 7m caused		27 KALANDADZE N 7m received
57:50		31 - 26 +5	11 TSKHOVREBADZE G Goal Penalty shot bottom right (27 KALANDADZE N), 98.70 km/h
58:33	20 VERSTEIJNEN N Shot centre 9m saved middle right		
59:22			71 DIKHAMINJIA G Shot flying throw saved middle right

OFFICIAL PARTNERS



EHF PARTNERS



NATIONAL SUPPLIERS



Empty Goal Analysis

Malmö

Match No: 29

NED 31 - 26 GEO
(18 - 15) (13 - 11)

Referees: HANSEN Mads (DEN) / MADSEN Jesper (DEN)

ATTACKS DURING OWN EMPTY GOAL SITUATION

Players on Court	Attacks		Goals		Saves		Missed		Blocked		Post		Turnovers		Scoring Efficiency		Goals Against	
	NED	GEO	NED	GEO	NED	GEO	NED	GEO	NED	GEO	NED	GEO	NED	GEO	NED	GEO	NED	GEO
7 Against 6																		
6 Against 6	1	1											1	1	0	0		
Others																		
Total:	1	1											1	1	0	0		

GOALS/ATTACKS DURING OWN EMPTY GOAL SITUATION - ANALYSIS OF OCCURRENCE (in 5 min intervals)

Players on Court	1st Half											
	0-5		5-10		10-15		15-20		20-25		25-30	
	NED	GEO	NED	GEO	NED	GEO	NED	GEO	NED	GEO	NED	GEO
7 Against 6												
6 Against 6									0/1			
Others												
Total:									0/1			

Players on Court	2nd Half											
	30-35		35-40		40-45		45-50		50-55		55-60	
	NED	GEO	NED	GEO	NED	GEO	NED	GEO	NED	GEO	NED	GEO
7 Against 6												
6 Against 6							0/1					
Others												
Total:							0/1					

GOALS/ATTACKS DURING OWN EMPTY GOAL SITUATION - ANALYSIS BY DURATION

Team	<15 sec.	15-30 sec.	30-45 sec.	45-60 sec.	>60 sec.
NED			0/1		
GEO		0/1			

SUBSTITUTION SUMMARY

Players	NED	GEO
Goalkeeper <-> Goalkeeper	3	1
Court Player <-> Goalkeeper	10	2
Court Player <-> Court Player	83	70
Total:	96	73

OFFICIAL PARTNERS



EHF PARTNERS



NATIONAL SUPPLIERS



Line-Up Analysis

Malmö

Match No: 29

Attendance: 6.835

NED 31 - 26 GEO

NED - Netherlands

Lineup efficiency								Time Played	GF	GA
3 STAVAST I	11 POL J	14 SCHAGEN B	15 KOOIJ L	20 VERSTEIJNEN N	22 STEINS L	97 TABOADA R	9:45	1	6	
3 STAVAST I	5 TEN VELDE R	12 DORGELO MR	15 KOOIJ L	20 VERSTEIJNEN N	22 STEINS L	97 TABOADA R	8:53	2	7	
3 STAVAST I	5 TEN VELDE R	11 POL J	14 SCHAGEN B	15 KOOIJ L	20 VERSTEIJNEN N	22 STEINS L	6:45	4	0	
3 STAVAST I	5 TEN VELDE R	12 DORGELO MR	14 SCHAGEN B	15 KOOIJ L	20 VERSTEIJNEN N	22 STEINS L	4:59	6	0	
11 POL J	14 SCHAGEN B	15 KOOIJ L	17 GEENEN K	20 VERSTEIJNEN N	22 STEINS L	97 TABOADA R	4:01	2	0	
5 TEN VELDE R	11 POL J	14 SCHAGEN B	15 KOOIJ L	20 VERSTEIJNEN N	22 STEINS L	97 TABOADA R	3:28	4	0	
3 STAVAST I	5 TEN VELDE R	11 POL J	14 SCHAGEN B	15 KOOIJ L	20 VERSTEIJNEN N	97 TABOADA R	3:26	2	3	
3 STAVAST I	5 TEN VELDE R	11 POL J	20 VERSTEIJNEN N	21 KLEIJKERS M	22 STEINS L	97 TABOADA R	3:02	1	2	
5 TEN VELDE R	11 POL J	14 SCHAGEN B	20 VERSTEIJNEN N	21 KLEIJKERS M	22 STEINS L	97 TABOADA R	2:59	5	0	
5 TEN VELDE R	12 DORGELO MR	20 VERSTEIJNEN N	21 KLEIJKERS M	22 STEINS L	34 JANSEN T	97 TABOADA R	2:39	1	2	
3 STAVAST I	5 TEN VELDE R	12 DORGELO MR	14 SCHAGEN B	20 VERSTEIJNEN N	21 KLEIJKERS M	22 STEINS L	1:22	0	0	
3 STAVAST I	5 TEN VELDE R	11 POL J	20 VERSTEIJNEN N	21 KLEIJKERS M	27 SMIT A	97 TABOADA R	1:17	1	0	
3 STAVAST I	5 TEN VELDE R	11 POL J	14 SCHAGEN B	21 KLEIJKERS M	34 JANSEN T	97 TABOADA R	1:07	1	1	
5 TEN VELDE R	11 POL J	14 SCHAGEN B	20 VERSTEIJNEN N	21 KLEIJKERS M	34 JANSEN T	97 TABOADA R	1:02	0	1	
3 STAVAST I	5 TEN VELDE R	12 DORGELO MR	14 SCHAGEN B	15 KOOIJ L	20 VERSTEIJNEN N	97 TABOADA R	1:01	0	1	
3 STAVAST I	5 TEN VELDE R	11 POL J	14 SCHAGEN B	20 VERSTEIJNEN N	34 JANSEN T	97 TABOADA R	0:49	0	1	
5 TEN VELDE R	12 DORGELO MR	14 SCHAGEN B	20 VERSTEIJNEN N	21 KLEIJKERS M	22 STEINS L	97 TABOADA R	0:44	1	0	
3 STAVAST I	5 TEN VELDE R	14 SCHAGEN B	15 KOOIJ L	20 VERSTEIJNEN N	22 STEINS L	97 TABOADA R	0:34	0	0	
3 STAVAST I	5 TEN VELDE R	11 POL J	14 SCHAGEN B	15 KOOIJ L	22 STEINS L	97 TABOADA R	0:32	0	0	
3 STAVAST I	5 TEN VELDE R	11 POL J	21 KLEIJKERS M	22 STEINS L	27 SMIT A	97 TABOADA R	0:18	0	0	
3 STAVAST I	5 TEN VELDE R	11 POL J	14 SCHAGEN B	20 VERSTEIJNEN N	22 STEINS L	24 MANDERS D	0:17	0	0	
3 STAVAST I	5 TEN VELDE R	11 POL J	21 KLEIJKERS M	22 STEINS L	34 JANSEN T	97 TABOADA R	0:16	0	0	
3 STAVAST I	12 DORGELO MR	14 SCHAGEN B	15 KOOIJ L	20 VERSTEIJNEN N	22 STEINS L	97 TABOADA R	0:13	0	1	
3 STAVAST I	5 TEN VELDE R	12 DORGELO MR	20 VERSTEIJNEN N	21 KLEIJKERS M	22 STEINS L	97 TABOADA R	0:12	0	1	
3 STAVAST I	5 TEN VELDE R	14 SCHAGEN B	20 VERSTEIJNEN N	21 KLEIJKERS M	22 STEINS L	97 TABOADA R	0:06	0	0	
3 STAVAST I	5 TEN VELDE R	11 POL J	14 SCHAGEN B	20 VERSTEIJNEN N	22 STEINS L	34 JANSEN T	0:05	0	0	
3 STAVAST I	5 TEN VELDE R	14 SCHAGEN B	15 KOOIJ L	20 VERSTEIJNEN N	22 STEINS L	34 JANSEN T	0:05	0	0	
5 TEN VELDE R	12 DORGELO MR	14 SCHAGEN B	15 KOOIJ L	20 VERSTEIJNEN N	22 STEINS L	97 TABOADA R	0:03	0	0	

Score development								Time Played	G Diff.
3 STAVAST I	5 TEN VELDE R	12 DORGELO MR	14 SCHAGEN B	15 KOOIJ L	20 VERSTEIJNEN N	22 STEINS L	4:59	+6	
5 TEN VELDE R	11 POL J	14 SCHAGEN B	20 VERSTEIJNEN N	21 KLEIJKERS M	22 STEINS L	97 TABOADA R	2:59	+5	
5 TEN VELDE R	11 POL J	14 SCHAGEN B	15 KOOIJ L	20 VERSTEIJNEN N	22 STEINS L	97 TABOADA R	3:28	+4	
3 STAVAST I	5 TEN VELDE R	11 POL J	14 SCHAGEN B	15 KOOIJ L	20 VERSTEIJNEN N	22 STEINS L	6:45	+4	
11 POL J	14 SCHAGEN B	15 KOOIJ L	17 GEENEN K	20 VERSTEIJNEN N	22 STEINS L	97 TABOADA R	4:01	+2	
5 TEN VELDE R	12 DORGELO MR	14 SCHAGEN B	20 VERSTEIJNEN N	21 KLEIJKERS M	22 STEINS L	97 TABOADA R	0:44	+1	
3 STAVAST I	5 TEN VELDE R	11 POL J	20 VERSTEIJNEN N	21 KLEIJKERS M	27 SMIT A	97 TABOADA R	1:17	+1	
5 TEN VELDE R	12 DORGELO MR	14 SCHAGEN B	15 KOOIJ L	20 VERSTEIJNEN N	22 STEINS L	97 TABOADA R	0:03	0	
3 STAVAST I	5 TEN VELDE R	11 POL J	14 SCHAGEN B	20 VERSTEIJNEN N	22 STEINS L	34 JANSEN T	0:05	0	
3 STAVAST I	5 TEN VELDE R	14 SCHAGEN B	15 KOOIJ L	20 VERSTEIJNEN N	22 STEINS L	34 JANSEN T	0:05	0	
3 STAVAST I	5 TEN VELDE R	14 SCHAGEN B	20 VERSTEIJNEN N	21 KLEIJKERS M	22 STEINS L	97 TABOADA R	0:06	0	
3 STAVAST I	5 TEN VELDE R	11 POL J	21 KLEIJKERS M	22 STEINS L	34 JANSEN T	97 TABOADA R	0:16	0	
3 STAVAST I	5 TEN VELDE R	11 POL J	14 SCHAGEN B	20 VERSTEIJNEN N	22 STEINS L	24 MANDERS D	0:17	0	
3 STAVAST I	5 TEN VELDE R	11 POL J	21 KLEIJKERS M	22 STEINS L	27 SMIT A	97 TABOADA R	0:18	0	
3 STAVAST I	5 TEN VELDE R	11 POL J	14 SCHAGEN B	15 KOOIJ L	22 STEINS L	97 TABOADA R	0:32	0	
3 STAVAST I	5 TEN VELDE R	14 SCHAGEN B	15 KOOIJ L	20 VERSTEIJNEN N	22 STEINS L	97 TABOADA R	0:34	0	
3 STAVAST I	5 TEN VELDE R	11 POL J	14 SCHAGEN B	21 KLEIJKERS M	34 JANSEN T	97 TABOADA R	1:07	0	
3 STAVAST I	5 TEN VELDE R	12 DORGELO MR	14 SCHAGEN B	20 VERSTEIJNEN N	21 KLEIJKERS M	22 STEINS L	1:22	0	
3 STAVAST I	5 TEN VELDE R	12 DORGELO MR	20 VERSTEIJNEN N	21 KLEIJKERS M	22 STEINS L	97 TABOADA R	0:12	-1	
3 STAVAST I	12 DORGELO MR	14 SCHAGEN B	15 KOOIJ L	20 VERSTEIJNEN N	22 STEINS L	97 TABOADA R	0:13	-1	
3 STAVAST I	5 TEN VELDE R	11 POL J	14 SCHAGEN B	20 VERSTEIJNEN N	34 JANSEN T	97 TABOADA R	0:49	-1	
3 STAVAST I	5 TEN VELDE R	12 DORGELO MR	14 SCHAGEN B	15 KOOIJ L	20 VERSTEIJNEN N	97 TABOADA R	1:01	-1	
5 TEN VELDE R	11 POL J	14 SCHAGEN B	20 VERSTEIJNEN N	21 KLEIJKERS M	34 JANSEN T	97 TABOADA R	1:02	-1	

OFFICIAL PARTNERS



EHF PARTNERS



NATIONAL SUPPLIERS



Line-Up Analysis

Malmö

Match No: 29

Attendance: 6.835

NED 31 - 26 GEO

NED - Netherlands

Score development							Time Played	G Diff.
5 TEN VELDE R	12 DORGELO MR	20 VERSTEIJNEN N	21 KLEIJKERS M	22 STEINS L	34 JANSEN T	97 TABOADA R	2:39	-1
3 STAVAST I	5 TEN VELDE R	11 POL J	20 VERSTEIJNEN N	21 KLEIJKERS M	22 STEINS L	97 TABOADA R	3:02	-1
3 STAVAST I	5 TEN VELDE R	11 POL J	14 SCHAGEN B	15 KOOIJ L	20 VERSTEIJNEN N	97 TABOADA R	3:26	-1
3 STAVAST I	5 TEN VELDE R	12 DORGELO MR	15 KOOIJ L	20 VERSTEIJNEN N	22 STEINS L	97 TABOADA R	8:53	-5
3 STAVAST I	11 POL J	14 SCHAGEN B	15 KOOIJ L	20 VERSTEIJNEN N	22 STEINS L	97 TABOADA R	9:45	-5

Empty Goal							Time Played	GF	GA
3 STAVAST I	5 TEN VELDE R	14 SCHAGEN B	15 KOOIJ L	20 VERSTEIJNEN N	22 STEINS L	97 TABOADA R	0:34	0	0
3 STAVAST I	5 TEN VELDE R	14 SCHAGEN B	20 VERSTEIJNEN N	21 KLEIJKERS M	22 STEINS L	97 TABOADA R	0:06	0	0
3 STAVAST I	5 TEN VELDE R	14 SCHAGEN B	15 KOOIJ L	20 VERSTEIJNEN N	22 STEINS L	34 JANSEN T	0:05	0	0

OFFICIAL PARTNERS



EHF PARTNERS



NATIONAL SUPPLIERS



Preliminary Round - Group E

Line-Up Analysis

Malmö

Match No: 29

Attendance: 6.835

NED 31 - 26 GEO

GEO - Georgia

Lineup efficiency										Time Played	GF	GA				
3	LAPIASHVILI G	7	RUSTAMOV K	10	KBILASHVILI I	11	TSKHOVREBADZE G	12	TSINTSADZE Z	27	KALANDADZE N	71	DIKHAMINJIA G	21:01	16	5
3	LAPIASHVILI G	7	RUSTAMOV K	11	TSKHOVREBADZE G	12	TSINTSADZE Z	27	KALANDADZE N	34	GAVASHELISHVILI M	71	DIKHAMINJIA G	11:32	2	13
3	LAPIASHVILI G	7	RUSTAMOV K	10	KBILASHVILI I	12	TSINTSADZE Z	27	KALANDADZE N	34	GAVASHELISHVILI M	71	DIKHAMINJIA G	9:52	0	7
3	LAPIASHVILI G	7	RUSTAMOV K	10	KBILASHVILI I	11	TSKHOVREBADZE G	12	TSINTSADZE Z	34	GAVASHELISHVILI M	71	DIKHAMINJIA G	6:53	6	2
3	LAPIASHVILI G	7	RUSTAMOV K	9	ARESHIDZE G	11	TSKHOVREBADZE G	12	TSINTSADZE Z	34	GAVASHELISHVILI M	71	DIKHAMINJIA G	3:25	0	1
3	LAPIASHVILI G	7	RUSTAMOV K	11	TSKHOVREBADZE G	27	KALANDADZE N	34	GAVASHELISHVILI M	71	DIKHAMINJIA G	87	NIKABADZE D	1:47	1	0
3	LAPIASHVILI G	7	RUSTAMOV K	10	KBILASHVILI I	11	TSKHOVREBADZE G	34	GAVASHELISHVILI M	71	DIKHAMINJIA G	87	NIKABADZE D	1:28	1	1
3	LAPIASHVILI G	7	RUSTAMOV K	10	KBILASHVILI I	11	TSKHOVREBADZE G	27	KALANDADZE N	71	DIKHAMINJIA G	87	NIKABADZE D	1:18	0	0
3	LAPIASHVILI G	10	KBILASHVILI I	11	TSKHOVREBADZE G	12	TSINTSADZE Z	27	KALANDADZE N	34	GAVASHELISHVILI M	71	DIKHAMINJIA G	1:11	0	1
3	LAPIASHVILI G	7	RUSTAMOV K	9	ARESHIDZE G	12	TSINTSADZE Z	27	KALANDADZE N	34	GAVASHELISHVILI M	71	DIKHAMINJIA G	0:41	0	1
3	LAPIASHVILI G	7	RUSTAMOV K	9	ARESHIDZE G	11	TSKHOVREBADZE G	12	TSINTSADZE Z	27	KALANDADZE N	34	GAVASHELISHVILI M	0:30	0	0
3	LAPIASHVILI G	7	RUSTAMOV K	10	KBILASHVILI I	11	TSKHOVREBADZE G	27	KALANDADZE N	34	GAVASHELISHVILI M	71	DIKHAMINJIA G	0:22	0	0

Score development										Time Played	G Diff.				
3	LAPIASHVILI G	7	RUSTAMOV K	10	KBILASHVILI I	11	TSKHOVREBADZE G	12	TSINTSADZE Z	27	KALANDADZE N	71	DIKHAMINJIA G	21:01	+11
3	LAPIASHVILI G	7	RUSTAMOV K	10	KBILASHVILI I	11	TSKHOVREBADZE G	12	TSINTSADZE Z	34	GAVASHELISHVILI M	71	DIKHAMINJIA G	6:53	+4
3	LAPIASHVILI G	7	RUSTAMOV K	11	TSKHOVREBADZE G	27	KALANDADZE N	34	GAVASHELISHVILI M	71	DIKHAMINJIA G	87	NIKABADZE D	1:47	+1
3	LAPIASHVILI G	7	RUSTAMOV K	10	KBILASHVILI I	11	TSKHOVREBADZE G	27	KALANDADZE N	34	GAVASHELISHVILI M	71	DIKHAMINJIA G	0:22	0
3	LAPIASHVILI G	7	RUSTAMOV K	9	ARESHIDZE G	11	TSKHOVREBADZE G	12	TSINTSADZE Z	27	KALANDADZE N	34	GAVASHELISHVILI M	0:30	0
3	LAPIASHVILI G	7	RUSTAMOV K	10	KBILASHVILI I	11	TSKHOVREBADZE G	27	KALANDADZE N	71	DIKHAMINJIA G	87	NIKABADZE D	1:18	0
3	LAPIASHVILI G	7	RUSTAMOV K	10	KBILASHVILI I	11	TSKHOVREBADZE G	34	GAVASHELISHVILI M	71	DIKHAMINJIA G	87	NIKABADZE D	1:28	0
3	LAPIASHVILI G	7	RUSTAMOV K	9	ARESHIDZE G	12	TSINTSADZE Z	27	KALANDADZE N	34	GAVASHELISHVILI M	71	DIKHAMINJIA G	0:41	-1
3	LAPIASHVILI G	10	KBILASHVILI I	11	TSKHOVREBADZE G	12	TSINTSADZE Z	27	KALANDADZE N	34	GAVASHELISHVILI M	71	DIKHAMINJIA G	1:11	-1
3	LAPIASHVILI G	7	RUSTAMOV K	9	ARESHIDZE G	11	TSKHOVREBADZE G	12	TSINTSADZE Z	34	GAVASHELISHVILI M	71	DIKHAMINJIA G	3:25	-1
3	LAPIASHVILI G	7	RUSTAMOV K	10	KBILASHVILI I	12	TSINTSADZE Z	27	KALANDADZE N	34	GAVASHELISHVILI M	71	DIKHAMINJIA G	9:52	-7
3	LAPIASHVILI G	7	RUSTAMOV K	11	TSKHOVREBADZE G	12	TSINTSADZE Z	27	KALANDADZE N	34	GAVASHELISHVILI M	71	DIKHAMINJIA G	11:32	-11

Empty Goal										Time Played	GF	GA				
3	LAPIASHVILI G	7	RUSTAMOV K	10	KBILASHVILI I	11	TSKHOVREBADZE G	27	KALANDADZE N	34	GAVASHELISHVILI M	71	DIKHAMINJIA G	0:22	0	0

Legend:
G Diff. Goals Difference

OFFICIAL PARTNERS



EHF PARTNERS



NATIONAL SUPPLIERS

