

## Start List

Match No: 12

### DEN - POR

**Referees:** PAVICEVIC Ivan (MNE) / RAZNATOVIC Milos (MNE)  
**Reserve:** BIRO Adam (HUN) / KISS Oliver (HUN)  
**EHF Observer:** SONDORS Zigmars (LAT)

**EHF Supervisor:** TRESPIDI Marco (ITA)  
**Timekeeper:** LEMMING Birgitte (DEN)  
**Scorekeeper:** RASMUSSEN Inge Holst (DEN)

#### DEN - Denmark

No.	Name	Pos.	Height m	Int. Matches		Competition Statistics								
				MP	G	MP	G	7mG	YC	2Min	RC	S	7mS	
12	NIELSEN Emil	GK	1.95	72	6	2							10	
20	MØLLER Kevin	GK	2.00	98	8	2							18	
3	KIRKELØKKE Niclas	RB	1.95	111	204	2				1				
4	LANDIN Magnus	LW	2.00	165	303	2	3							
7	JAKOBSEN Emil	LW	1.90	104	375	2	9	6						
11	LAUGE Rasmus	CB	1.95	188	473	2	6							
15	SAUGSTRUP Magnus	P	1.95	109	209	2	3							
19	GIDSEL Mathias	RB	1.90	99	609	2	17							
22	MENSAH Mads	CB	1.88	218	339									
26	HANSEN Jóhan	RW	1.90	112	204	1	2							
28	ANDERSSON Lasse	LB	1.96	90	124	2	2							
33	BERGHOLT Emil	P	1.90	27	13	2								
34	HALD Simon	P	2.03	116	119	2	1				1			
38	HOXER Mads	RB	1.95	14	35	2	9							
43	PYTLICK Simon	CB	1.93	64	304	2	17							
64	MØLLER Lasse	LB	1.99	22	30	1	3							
(NN)	ANDERSEN Frederik	RW	1.86	6	10	1								
(NN)	JØRGENSEN Lukas	P	1.94	65	181	2	3							
(NN)	SVANE Mads	CB	1.85	3	6	1								
<b>Headcoach</b>		JACOBSEN Nikolaj		<b>Bench/Team</b>										

DEN Played		
PR	MKD	36- 24
PR	ROU	39- 24
PR	POR	20 JAN

#### POR - Portugal

No.	Name	Pos.	Height m	Int. Matches		Competition Statistics								
				MP	G	MP	G	7mG	YC	2Min	RC	S	7mS	
41	CAPDEVILLE Gustavo	GK	1.90	76	0	2							18	2
96	TONICHER Pedro	GK	1.90	2	0									
8	ITURIZZA Victor	P	1.93	64	221	2	7				3			
9	MONTEIRO Filipe	CB	1.81	5	5									
13	SALVADOR Salvador	LB	1.98	47	110	2	8							
14	SILVA Rui	CB	1.86	155	279	2	3							
20	NEVES Miguel	LB	2.03	9	20	2	4		1	1	1			
21	FERNANDES Leonel	LW	1.91	70	124	2	3							
23	BRANQUINHO Diogo	LW	1.85	114	234	2	1							
25	AREIA António	RW	1.90	117	348	2	4							
26	COSTA Francisco	RB	1.90	46	195	2	20	7						
66	GOMES João	RB	1.78	22	49	2	1							
79	COSTA Martim	CB	1.88	44	186	2	9							
82	FRADE Luís	P	1.94	92	210	2	6				2			
86	BRANDÃO Ricardo	P	1.95	27	31	2	2							
95	CAVALCANTI Gabriel	CB	1.97	11	16	2								
(NN)	FERREIRA José	RW	1.83	7	6	2	1							
(NN)	VALÉRIO Diogo	GK	1.94	16	0	2								
<b>Headcoach</b>		PEREIRA Paulo		<b>Bench/Team</b>										

POR Played		
PR	ROU	40- 34
PR	MKD	29- 29
PR	DEN	20 JAN

**Notes:**  
Players below the bold line are not playing in this match.

Legend:			
<b>(NN)</b>	Not nominated	<b>2Min</b>	2-Minute Suspensions
<b>CB</b>	Centre Back	<b>G</b>	Goals
<b>LW</b>	Left Wing	<b>MP</b>	Matches Played
<b>PR</b>	Preliminary Round	<b>RB</b>	Right Back
<b>RW</b>	Right Wing	<b>S</b>	Saves
		<b>7mG</b>	7-metre Goals
		<b>GK</b>	Goalkeeper
		<b>P</b>	Line Player
		<b>RC</b>	Red Cards (Direct and after 3rd 2-Minute Suspension)
		<b>YC</b>	Yellow Cards
		<b>7mS</b>	7-metre Saves
		<b>LB</b>	Left Back
		<b>Pos</b>	Position

#### OFFICIAL PARTNERS



#### EHF PARTNERS



#### NATIONAL SUPPLIERS



### Preliminary Round - Group B

TUE 20 JAN 2026  
Start Time: 20:30

## Results

Match No: 12

### DEN 29 - 31 POR

(11 - 12) (18 - 19)

Herning

Attendance: 15.000

Referees: PAVICEVIC Ivan (MNE) / RAZNATOVIC Milos (MNE)

#### Denmark

Coach: JACOBSEN Nikolaj

Time outs: 3

No.	Name	Total		Goals / Shots							Punishments			TP		
		G/S	%	7m	6m	Wing	BT	FB	FTO	9m	EG	YC	RC		2M	
3	KIRKELOKKE Niclas															
4	LANDIN Magnus	2/3	67	0/1		2/2										37:30
7	JAKOBSEN Emil	1/5	20	1/2		0/3										19:06
11	LAUGE Rasmus	4/4	100				2/2			2/2						35:35
12	NIELSEN Emil															47:38
15	SAUGSTRUP Magnus	2/2	100		2/2											54:01
19	GIDSEL Mathias	8/12	67		2/3		2/5		1/1	3/3						59:51
20	MOLLER Kevin															4:32
22	MENSAH Mads															
26	HANSEN Jóhan	2/3	67			2/3										16:03
28	ANDERSSON Lasse															4:01
33	BERGHOLT Emil														1	13:15
34	HALD Simon	2/3	67		2/3										2	29:53
38	HOXER Mads	2/5	40			1/2				1/3						46:28
43	PYTLICK Simon	6/8	75		2/2		3/3			1/3						46:07
64	MOLLER Lasse															
Totals		29/45	64	1/3	8/10	5/10	7/10		1/1	7/11					3	60:00

No.	Name	Total		Saves / Shots						
		S/S	%	7m	6m	Wing	BT	FB	FTO	9m
12	NIELSEN Emil	10/35	29	1/6	4/10	0/3	1/4	0/3		4/9
20	MOLLER Kevin	1/6	17	1/2		0/2				0/2
EG		1								
Totals		11/42	26	2/8	4/10	0/5	1/4	0/3		4/11

#### Portugal

Coach: PEREIRA Paulo

Time outs: 3

No.	Name	Total		Goals / Shots							Punishments			TP		
		G/S	%	7m	6m	Wing	BT	FB	FTO	9m	EG	YC	RC		2M	
8	ITURIZZA Victor	1/1	100					1/1					1	2		36:31
9	MONTEIRO Filipe															
13	SALVADOR Salvador	1/4	25		0/1					0/2	1/1					42:05
14	SILVA Rui	0/2	0		0/1					0/1						32:16
20	NEVES Miguel	0/1	0							0/1						30:25
21	FERNANDES Leonel															21:04
23	BRANQUINHO Diogo	1/1	100			1/1										29:49
25	AREIA António	6/9	67	2/3	0/1	4/5										35:53
26	COSTA Francisco	9/15	60	4/5	0/2		1/2	1/1		3/5						43:12
41	CAPDEVILLE Gustavo															39:05
66	GOMES Joao															13:51
79	COSTA Martim	9/11	82		3/4		2/2			4/5						26:10
82	FRADE Luis	4/5	80		3/3			1/1		0/1						44:30
86	BRANDAO Ricardo															
95	CAVALCANTI Gabriel															
96	TONICHER Pedro															19:05
Totals		31/49	63	6/8	6/12	5/6	3/4	3/3		7/15	1/1		1	2		60:00

No.	Name	Total		Saves / Shots						
		S/S	%	7m	6m	Wing	BT	FB	FTO	9m
41	CAPDEVILLE Gustavo	7/26	27	0/1	1/5	3/5	2/8		0/1	1/6
96	TONICHER Pedro	3/13	23		1/5	0/3	1/2			1/3
Totals		10/39	26	0/1	2/10	3/8	3/10		0/1	2/9

#### Attacks

Team:	All		Player Majority		Player Minority		Position Attacks		FB		Ind. FB		Team FB		Att. Dur. (min)	Turnover		
	G/Att.	%	G/Att.	%	G/Att.	%	G/Att.	%	G/Att.	%	G/Att.	%	G/Att.	%		All	%	TOFB
DEN	29/50	58	2/3	67	1/5	20	28/48	58	0/1	0			0/1	0	0:33	5	10	1
POR	31/50	62	4/5	80	1/2	50	27/45	60	3/4	75			3/4	75	0:38	5	10	1

**Legend:**

%	Efficiency	2M	2-Minute Suspensions	7m	7-metre Penalty Shots	9m	9-metre Shots
Att. Dur.	Average Attack Duration	BT	Breakthroughs	FB	Fast Breaks	FTO	Fast Throw off
G/Att.	Goals/Attacks	G/S	Goals/Shots	No.	Uniform Number		
RC	Red Cards (Direct and after Third 2-Minute Suspension)	S/S	Saves/Shots	TP	Time Played		
TOFB	Turnover during Fast Breaks			Wing	Wing Shots		

#### RUNNING SCORE

DEN - POR	
1st Half	
GIDSEL M	0 (1) 1 AREIA A
	1 (2) 1
	1 (3) 2 COSTA F
	1 (4) 3 FRADE L
PYTLICK S	2 (5) 3
GIDSEL M	3 (5) 3
	3 (7) 4 COSTA F
	3 (8) 5 FRADE L
GIDSEL M	4 (8) 5
LAUGE R	5 (9) 5
	5 (12) 6 COSTA F
JAKOBSEN E	6 (13) 6
PYTLICK S	7 (15) 6
	7 (16) 7 COSTA F
	7 (17) 8 FRADE L
SAUGSTRUP M	8 (18) 8
	8 (19) 9 AREIA A
	8 (23) 10 AREIA A
LAUGE R	9 (23) 10
	9 (24) 11 SALVADOR S
	9 (26) 12 COSTA M
HOXER M	10 (27) 12
PYTLICK S	11 (30) 12

2nd Half	
PYTLICK S	12 (31) 12
	12 (32) 13 COSTA M
HOXER M	13 (32) 13
PYTLICK S	14 (34) 13
	14 (35) 14 COSTA M
LANDIN M	15 (35) 14
	15 (36) 15 COSTA F
GIDSEL M	16 (37) 15
HALD S	17 (38) 15
	17 (39) 16 COSTA M
	17 (39) 17 ITURIZZA V
GIDSEL M	18 (41) 17
PYTLICK S	19 (42) 17
	19 (43) 18 BRANQUINHO D
	19 (44) 19 FRADE L
	19 (45) 20 COSTA F
HANSEN J	20 (45) 20
	20 (46) 21 AREIA A
	20 (47) 22 COSTA F
LANDIN M	21 (49) 22
	21 (50) 23 COSTA M
	21 (51) 24 COSTA M
GIDSEL M	22 (51) 24
	22 (52) 25 COSTA F
GIDSEL M	23 (53) 25
	23 (53) 26 COSTA M
SAUGSTRUP M	24 (54) 26
HANSEN J	25 (55) 26
	25 (56) 27 COSTA M
HALD S	26 (57) 27
	26 (57) 28 COSTA F
GIDSEL M	27 (58) 28
	27 (59) 29 AREIA A
LAUGE R	28 (59) 29
	28 (59) 30 AREIA A
	28 (60) 31 COSTA M
LAUGE R	29 (60) 31

#### OFFICIAL PARTNERS



#### EHF PARTNERS



#### NATIONAL SUPPLIERS



TUE 20 JAN 2026  
Start Time: 20:30

### Preliminary Round - Group B

Herning

## Match Team Statistics

Match No: 12

**DEN 29 - 31 POR**

(11 - 12) (18 - 19)

Referees: PAVICEVIC Ivan (MNE) / RAZNATOVIC Milos (MNE)

### DEN - Denmark

Coach: JACOBSEN Nikolaj

Time outs: 3

No.	Name	Total		All Goals / Shots							Punishments				Offence			Defence			TP			
		G/S	%	7m	7m%	6m	Wing	BT	FB	FTO	9m	EG	YC	RC	2M	2+2	AS	R7	TO/TF	ST		BS	P7	
3	KIRKELOKKE Niclas																							
4	LANDIN Magnus	2/3	67	0/1	0		2/2																1	37:30
7	JAKOBSEN Emil	1/5	20	1/2	50		0/3																	19:06
11	LAUGE Rasmus	4/4	100					2/2			2/2						2	1						35:35
12	NIELSEN Emil																							47:38
15	SAUGSTRUP Magnus	2/2	100			2/2												1		1	1	1	1	54:01
19	GIDSEL Mathias	8/12	67			2/3		2/5		1/1	3/3					6	2	1						59:51
20	MOLLER Kevin																							4:32
22	MENSAH Mads																							
26	HANSEN Jóhan	2/3	67				2/3																	16:03
28	ANDERSSON Lasse																1							4:01
33	BERGHOLT Emil													1								2	13:15	
34	HALD Simon	2/3	67			2/3								2			1					2	29:53	
38	HOXER Mads	2/5	40				1/2				1/3						2					2	46:28	
43	PYTLICK Simon	6/8	75			2/2		3/3			1/3						5		1 / 1					46:07
64	MOLLER Lasse																							
Totals		29/45	64	1/3	33	8/10	5/10	7/10		1/1	7/11			3		16	3	4 / 1	1	1	1	8		

No.	Name	Total		All Saves / Shots									
		S/S	%	7m	7m%	Near Shots			FB	FTO	9m	9m%	
				All	All%	6m	Wing	BT					
12	NIELSEN Emil	10/35	29	1/6	17	5/17	29	4/10	0/3	1/4	0/3	4/9	44
20	MOLLER Kevin	1/6	17	1/2	50	0/2	0	0/2				0/2	0
EG		1											
Totals		11/42	26	2/8	25	5/19	26	4/10	0/5	1/4	0/3	4/11	36

### Attacks

Team	All		Player Majority		Player Minority		Position Attacks		FB		Ind. FB		Team FB		Att. Dur. (min)	Turnover		
	G/Att.	%	G/Att.	%	G/Att.	%	G/Att.	%	G/Att.	%	G/Att.	%	G/Att.	%		All	%	TOFB
DEN	29/50	58	2/3	67	1/5	20	28/48	58	0/1	0			0/1	0	0:33	5	10	1

### Team Shots

	Goals	Saves	Missed	Post	Blocked	Total	G/S %	Prop %
6m Shots	8	2				10	80	22
Wing Shots	5	3	2			10	50	22
L R	2 3	1 2	1 1			4 6	50 50	9 13
9m Shots	7	2	2			11	64	24
L C R	1 5 1	1 1	1 1			2 7 2	50 71 50	4 16 4
7m Penalty Throws	1			2		3	33	7
Fast Breaks								0
Breakthroughs	7	3				10	70	22
Fast Throw Offs	1					1	100	2
Empty Goals								0
Totals	29	10	4	2		45	64	100

Legend:			
%	Efficiency	2M	2-Minute Suspensions
9m	9-metre Shots	2+2	2+2 Minute Suspensions
C	Center	Att. Dur.	Average Attack Duration
G/S	Goals/ Shots	AS	Assists
R7	Received 7-metre Fouls	EG	Empty Goal
ST	Steals	FB	Fast Breaks
Wing	Wing Shots	FTO	Fast Throw off
		Ind.	Individual
		L	Left
		P7	Penalty 7-metre Fouls
		R	Right
		RC	Red Cards (Direct and after 3rd 2-Minute Suspension)
		TO/TF	Turnover/Technical Fouls
		TOFB	Turnover during Fast Breaks
		7m	7-metre Penalty Shots
		BT	Breakthroughs
		G/Att.	Goals/Attacks
		Prop %	Proportion of Shots
		S/S	Saves/Shots
		TP	Time Played

#### OFFICIAL PARTNERS



#### EHF PARTNERS



#### NATIONAL SUPPLIERS



### Match Team Statistics

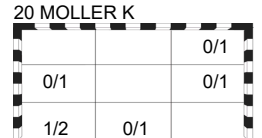
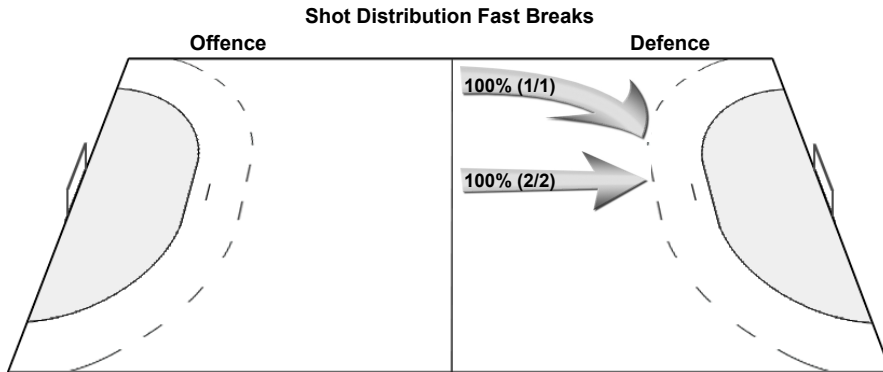
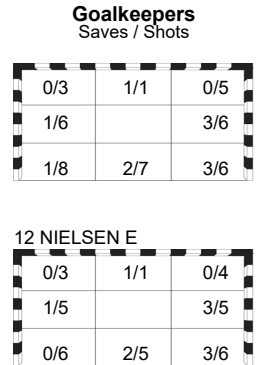
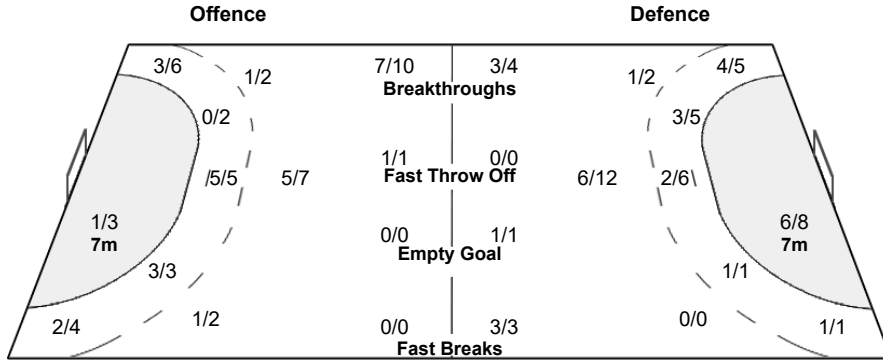
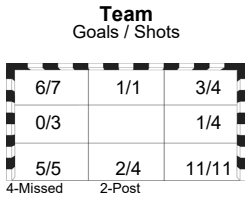
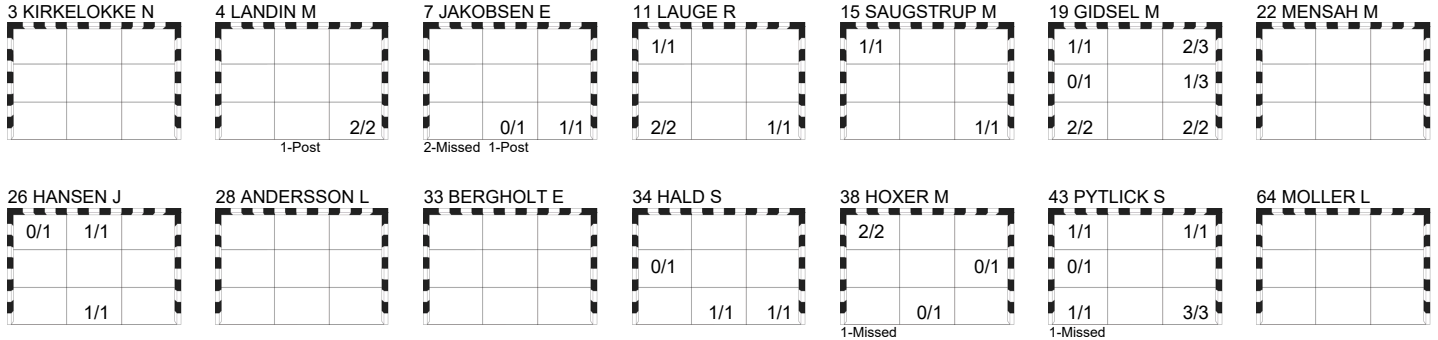
Match No: 12

**DEN 29 - 31 POR**  
(11 - 12) (18 - 19)

Referees: PAVICEVIC Ivan (MNE) / RAZNATOVIC Milos (MNE)

**DEN - Denmark**

### Overview of Shot Distribution



OFFICIAL PARTNERS



EHF PARTNERS



NATIONAL SUPPLIERS



TUE 20 JAN 2026  
Start Time: 20:30

### Preliminary Round - Group B

Herning

Match No: 12

**DEN 29 - 31 POR**  
(11 - 12) (18 - 19)

Referees: PAVICEVIC Ivan (MNE) / RAZNATOVIC Milos (MNE)

### POR - Portugal

Coach: PEREIRA Paulo

Time outs: 3

No.	Name	Total		All Goals / Shots							Punishments				Offence			Defence			TP		
		G/S	%	7m	7m%	6m	Wing	BT	FB	FTO	9m	EG	YC	RC	2M	2+2	AS	R7	TO/TF	ST		BS	P7
8	ITURIZZA Victor	1/1	100										1	2								1	36:31
9	MONTEIRO Filipe																						
13	SALVADOR Salvador	1/4	25			0/1											2	1				1	42:05
14	SILVA Rui	0/2	0			0/1											4	2					32:16
20	NEVES Miguel	0/1	0													1		1					30:25
21	FERNANDES Leonel																					1	21:04
23	BRANQUINHO Diogo	1/1	100				1/1																29:49
25	AREIA António	6/9	67	2/3	67	0/1	4/5																35:53
26	COSTA Francisco	9/15	60	4/5	80	0/2		1/2	1/1		3/5						5	2	2	1			43:12
41	CAPDEVILLE Gustavo																						39:05
66	GOMES Joao																						13:51
79	COSTA Martim	9/11	82			3/4		2/2			4/5						4	3					26:10
82	FRADE Luis	4/5	80			3/3					0/1						1		1				44:30
86	BRANDAO Ricardo																						
95	CAVALCANTI Gabriel																						
96	TONICHER Pedro																						19:05
Totals		31/49	63	6/8	75	6/12	5/6	3/4	3/3		7/15	1/1		1	2		17	8	3	2		3	

No.	Name	Total		All Saves / Shots										
		S/S	%	7m	7m%	Near Shots			FB	FTO	9m	9m%		
				All	All%	6m	Wing	BT						
41	CAPDEVILLE Gustavo	7/26	27	0/1	0	6/18	33	1/5	3/5	2/8		0/1	1/6	17
96	TONICHER Pedro	3/13	23			2/10	20	1/5	0/3	1/2			1/3	33
Totals		10/39	26	0/1	0	8/28	29	2/10	3/8	3/10		0/1	2/9	22

### Attacks

Team	All		Player Majority		Player Minority		Position Attacks		FB		Ind. FB		Team FB		Att. Dur. (min)	Turnover		
	G/Att.	%	G/Att.	%	G/Att.	%	G/Att.	%	G/Att.	%	G/Att.	%	G/Att.	%		All	%	TOFB
POR	31/50	62	4/5	80	1/2	50	27/45	60	3/4	75			3/4	75	0:38	5	10	1

### Team Shots

	Goals	Saves	Missed	Post	Blocked	Total	G/S %	Prop %
6m Shots	6	4	1	1		12	50	24
Wing Shots	5			1		6	83	12
L R	1 4			1		1 5	100 80	2 10
9m Shots	7	4	3		1	15	47	31
L C R	6 1	3 1	2		1	12 2	50 50	0 24 4
7m Penalty Throws	6	2				8	75	16
Fast Breaks	3					3	100	6
Breakthroughs	3	1				4	75	8
Fast Throw Offs								0
Empty Goals	1					1	100	2
Totals	31	11	4	2	1	49	63	100

Legend:			
%	Efficiency	2M	2-Minute Suspensions
9m	9-metre Shots	2+2	2+2 Minute Suspensions
C	Center	Att. Dur.	Average Attack Duration
G/S	Goals/Shots	AS	Assists
R7	Received 7-metre Fouls	EG	Empty Goal
ST	Steals	FB	Fast Breaks
Wing	Wing Shots	FTO	Fast Throw off
		Ind.	Individual
		L	Left
		P7	Penalty 7-metre Fouls
		R	Right
		RC	Red Cards (Direct and after 3rd 2-Minute Suspension)
		TO/TF	Turnover/Technical Fouls
		TOFB	Turnover during Fast Breaks
		7m	7-metre Penalty Shots
		BT	Breakthroughs
		G/Att.	Goals/Attacks
		Prop %	Proportion of Shots
		S/S	Saves/Shots
		TP	Time Played
		YC	Yellow Cards

#### OFFICIAL PARTNERS



#### EHF PARTNERS



#### NATIONAL SUPPLIERS



### Match Team Statistics

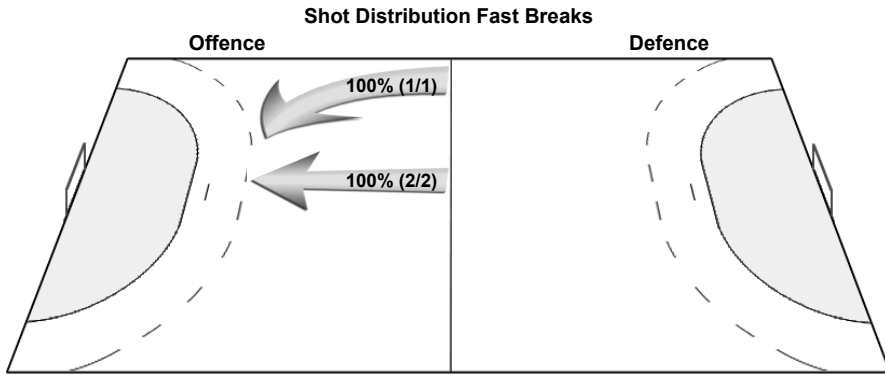
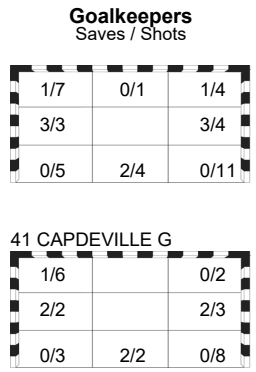
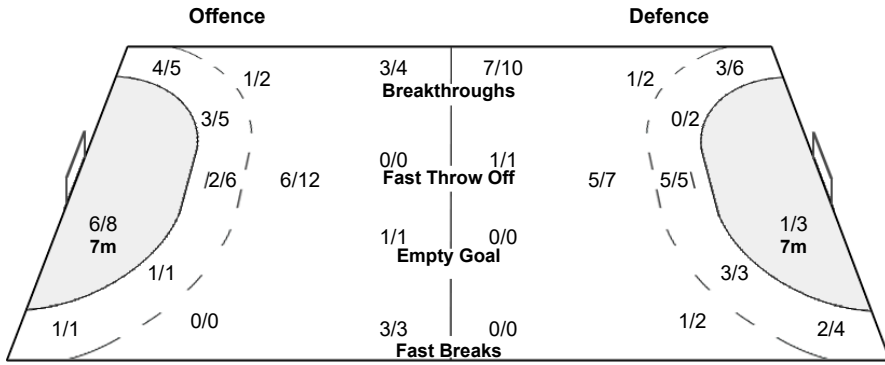
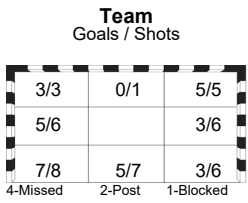
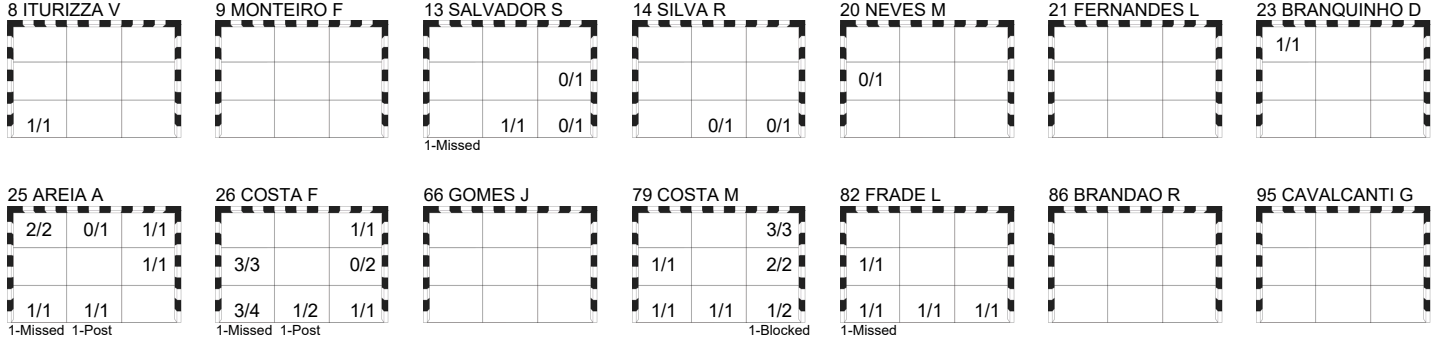
Match No: 12

**DEN 29 - 31 POR**  
(11 - 12) (18 - 19)

Referees: PAVICEVIC Ivan (MNE) / RAZNATOVIC Milos (MNE)

**POR - Portugal**

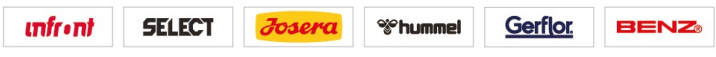
### Overview of Shot Distribution



OFFICIAL PARTNERS



EHF PARTNERS



NATIONAL SUPPLIERS



### Play by Play

Match No: 12

### DEN 29 - 31 POR

(11 - 12) (18 - 19)

Referees: PAVICEVIC Ivan (MNE) / RAZNATOVIC Milos (MNE)

<b>DEN</b> 3 KIRKELOKKE Niclas	4 LANDIN Magnus	7 JAKOBSEN Emil	A VILHELMSSEN Keld
11 LAUGE Rasmus	12 NIELSEN Emil	15 SAUGSTRUP Magnus	B JACOBSEN Nikolaj
19 GIDSEL Mathias	20 MOLLER Kevin	22 MENSAH Mads	C KRONBORG Henrik
26 HANSEN Jóhan	28 ANDERSSON Lasse	33 BERGHOLT Emil	D GREVE Anja
34 HALD Simon	38 HOXER Mads	43 PYTLICK Simon	E BRUUN Michael
64 MOLLER Lasse			
<b>POR</b> 8 ITURIZZA Victor	9 MONTEIRO Filipe	13 SALVADOR Salvador	A FIDALGO Jorge
14 SILVA Rui	20 NEVES Miguel	21 FERNANDES Leonel	B PEREIRA Paulo
23 BRANQUINHO Diogo	25 AREIA António	26 COSTA Francisco	C FERREIRA Telmo
41 CAPDEVILLE Gustavo	66 GOMES Joao	79 COSTA Martim	D CATARINO Paulo
82 FRADE Luis	86 BRANDAO Ricardo	95 CAVALCANTI Gabriel	E FONSECA Miguel
96 TONICHER Pedro			

### 1st HALF

Match Time	DEN - Denmark	Score	Lead	POR - Portugal
0:00	12 NIELSEN E Goalkeeper			41 CAPDEVILLE G Goalkeeper
0:42		0 - 1	-1	25 AREIA A Goal right wing top left (26 COSTA F), 84.08 km/h
1:35	19 GIDSEL M Goal centre 6m bottom right, 89.64 km/h	1 - 1	0	
2:22		1 - 2	-1	26 COSTA F Goal centre 9m middle left, 98.87 km/h
3:18	43 PYTLICK S Shot left 9m saved middle left			
3:24		1 - 3	-2	82 FRADE L Goal fast break bottom centre (26 COSTA F), 106.59 km/h
4:09	43 PYTLICK S Goal centre 9m top right, 103.18 km/h	2 - 3	-1	
4:22				20 NEVES M Shot centre 9m saved middle left
4:56	19 GIDSEL M Goal centre 6m middle right (11 LAUGE R), 101.68 km/h	3 - 3	0	
6:16	38 HOXER M 7m caused			26 COSTA F 7m received
6:25		3 - 4	-1	26 COSTA F Goal Penalty shot bottom centre, 90.65 km/h
7:05	19 GIDSEL M Shot breakthrough saved middle right			
7:36		3 - 5	-2	82 FRADE L Goal centre 6m middle left (13 SALVADOR S)
7:44	19 GIDSEL M Goal fast throw off top right (43 PYTLICK S), 82.97 km/h	4 - 5	-1	
7:52				82 FRADE L Turnover
8:20	11 LAUGE R Goal centre 9m top left, 94.37 km/h	5 - 5	0	
9:08				14 SILVA R Shot centre 6m saved bottom right
9:44	7 JAKOBSEN E Shot left wing saved bottom centre			
9:54				20 NEVES M Technical Fault (FB)
10:00	11 LAUGE R Turnover Fastbreak			
10:29				25 AREIA A Shot centre 6m missed
10:59	43 PYTLICK S Turnover			
11:43	33 BERGHOLT E 7m caused			14 SILVA R 7m received
11:52		5 - 6	-1	26 COSTA F Goal Penalty shot bottom left (14 SILVA R), 108.21 km/h
12:40	19 GIDSEL M 7m received			13 SALVADOR S 7m caused
12:51	7 JAKOBSEN E Goal Penalty shot bottom right (19 GIDSEL M), 55.98 km/h	6 - 6	0	
14:09				25 AREIA A Shot right wing post
14:25				8 ITURIZZA V 2-minutes suspension
14:27	26 HANSEN J for 12 NIELSEN E Empty goal			
14:38	12 NIELSEN E for 38 HOXER M Goalkeeper back			
14:38	43 PYTLICK S Goal left 6m top left (19 GIDSEL M), 82.54 km/h	7 - 6	+1	
14:54				26 COSTA F for 41 CAPDEVILLE G Empty goal
15:35		7 - 7	0	26 COSTA F Goal centre 9m bottom right, 110.16 km/h
15:36				41 CAPDEVILLE G for 25 AREIA A Goalkeeper back
15:50	7 JAKOBSEN E for 12 NIELSEN E Empty goal			
16:00	7 JAKOBSEN E Shot right wing missed			
16:02	12 NIELSEN E for 43 PYTLICK S Goalkeeper back			
16:18				79 COSTA M for 41 CAPDEVILLE G Empty goal

#### OFFICIAL PARTNERS



#### EHF PARTNERS



#### NATIONAL SUPPLIERS



**Play by Play**

Match No: 12

**DEN 29 - 31 POR**  
(11 - 12) (18 - 19)

**1st HALF**

Match Time	DEN - Denmark	Score	Lead	POR - Portugal
16:30				41 CAPDEVILLE G for 8 ITURIZZA V Goalkeeper back
16:51		7 - 8	-1	82 FRADE L Goal centre 6m bottom right (26 COSTA F), 93.95 km/h
17:03	Team timeout			
17:23	15 SAUGSTRUP M Goal centre 6m bottom right (19 GIDSEL M)	8 - 8	0	
17:58	33 BERGHOLT E 7m caused			79 COSTA M 7m received
17:58	33 BERGHOLT E 2-minutes suspension			
17:59	20 MOLLER K for 12 NIELSEN E Goalkeeper Substitution			
17:59				26 COSTA F Penalty shot saved bottom left
18:20	43 PYTLICK S for 20 MOLLER K Empty goal			
18:36	43 PYTLICK S Shot centre 9m missed			
18:40	12 NIELSEN E for 7 JAKOBSEN E Goalkeeper back			
18:48	38 HOXER M 7m caused			13 SALVADOR S 7m received
18:48	20 MOLLER K for 12 NIELSEN E Goalkeeper Substitution			
18:48		8 - 9	-1	25 AREIA A Goal Penalty shot bottom centre (13 SALVADOR S), 96.41 km/h
19:05	7 JAKOBSEN E for 20 MOLLER K Empty goal			
19:42	19 GIDSEL M Shot breakthrough saved middle right			
19:45	12 NIELSEN E for 43 PYTLICK S Goalkeeper back			
19:54				14 SILVA R for 41 CAPDEVILLE G Empty goal
20:04				41 CAPDEVILLE G for 14 SILVA R Goalkeeper back
20:05				13 SALVADOR S Shot right 6m saved middle right
20:12				26 COSTA F Technical Fault
20:41	34 HALD S Shot right 6m saved middle left			
21:15				79 COSTA M Shot centre 6m saved bottom right
21:25	7 JAKOBSEN E Shot left wing missed			
22:04	34 HALD S 7m caused			79 COSTA M 7m received
22:04	34 HALD S 2-minutes suspension			
22:04		8 - 10	-2	25 AREIA A Goal Penalty shot top left (79 COSTA M), 95.29 km/h
22:17	11 LAUGE R for 12 NIELSEN E Empty goal			
22:59	11 LAUGE R Goal centre 9m bottom left, 105.47 km/h	9 - 10	-1	
23:04		9 - 11	-2	13 SALVADOR S Goal empty goal bottom centre, 76.68 km/h
23:05	12 NIELSEN E for 43 PYTLICK S Goalkeeper back			
23:08	43 PYTLICK S for 12 NIELSEN E Empty goal			
23:52	19 GIDSEL M 7m received			21 FERNANDES L 7m caused
23:57	12 NIELSEN E for 43 PYTLICK S Goalkeeper back			
23:57				96 TONICHER P for 41 CAPDEVILLE G Goalkeeper Substitution
23:57	7 JAKOBSEN E Penalty shot post			
24:11				41 CAPDEVILLE G for 96 TONICHER P Goalkeeper Substitution
24:38				26 COSTA F Shot breakthrough saved middle right
25:01				26 COSTA F Turnover
25:20	38 HOXER M Shot right wing saved bottom centre			
25:53		9 - 12	-3	79 COSTA M Goal breakthrough middle left, 88.69 km/h
26:11	38 HOXER M Goal right wing top left (28 ANDERSSON L), 84.16 km/h	10 - 12	-2	
26:52	Video Replay (Punishment review) No Further Sanction			
27:20				13 SALVADOR S Shot centre 9m saved bottom right
28:05	34 HALD S 7m received			8 ITURIZZA V 7m caused
28:14				96 TONICHER P for 41 CAPDEVILLE G Goalkeeper Substitution
28:14	4 LANDIN M Penalty shot post			
28:26				41 CAPDEVILLE G for 96 TONICHER P Goalkeeper Substitution
29:02				Team timeout
29:18				26 COSTA F Shot centre 9m missed
29:48	43 PYTLICK S Goal breakthrough bottom left, 94.29 km/h	11 - 12	-1	
30:00				82 FRADE L Shot direct free throw missed

OFFICIAL PARTNERS



EHF PARTNERS



NATIONAL SUPPLIERS



Match No: 12

## Play by Play

### DEN 29 - 31 POR

(11 - 12) (18 - 19)

### 2nd HALF

Match Time	DEN - Denmark	Score	Lead	POR - Portugal
30:00	12 NIELSEN E Goalkeeper			41 CAPDEVILLE G Goalkeeper
30:00	26 HANSEN J for 12 NIELSEN E Empty goal			
30:44	43 PYTLICK S Goal breakthrough bottom right, 72.81 km/h	12 - 12	0	
30:48	12 NIELSEN E for 38 HOXER M Goalkeeper back			
31:33		12 - 13	-1	79 COSTA M Goal centre 9m bottom centre, 111.82 km/h
31:42	38 HOXER M Goal right 9m top left, 102.18 km/h	13 - 13	0	
32:16	34 HALD S 7m caused			26 COSTA F 7m received
32:25				25 AREIA A Penalty shot saved top centre
32:49	26 HANSEN J for 12 NIELSEN E Empty goal			
33:31	43 PYTLICK S Goal breakthrough bottom right, 85.16 km/h	14 - 13	+1	
33:33	12 NIELSEN E for 38 HOXER M Goalkeeper back			
34:37		14 - 14	0	79 COSTA M Goal right 6m middle right (26 COSTA F), 113.74 km/h
34:43	4 LANDIN M Goal left wing bottom right (43 PYTLICK S), 86.82 km/h	15 - 14	+1	
35:17	15 SAUGSTRUP M 7m caused			14 SILVA R 7m received
35:29		15 - 15	0	26 COSTA F Goal Penalty shot top right (14 SILVA R), 107.09 km/h
35:50	26 HANSEN J for 12 NIELSEN E Empty goal			
36:10	19 GIDSEL M Goal breakthrough bottom right, 93.32 km/h	16 - 15	+1	
36:11	12 NIELSEN E for 38 HOXER M Goalkeeper back			
37:08				Team timeout
37:08				96 TONICHER P for 41 CAPDEVILLE G Goalkeeper Substitution
37:15				13 SALVADOR S Shot centre 9m missed
37:22	34 HALD S Goal left 6m bottom centre (43 PYTLICK S), 73.81 km/h	17 - 15	+2	
37:58				26 COSTA F Shot right 9m saved middle right
38:26		17 - 16	+1	79 COSTA M Goal centre 9m top right, 93.34 km/h
38:26	Video Replay (Punishment review) Punishment			
38:26	34 HALD S 2-minutes suspension			
38:26	38 HOXER M for 12 NIELSEN E Empty goal			
38:48	19 GIDSEL M Turnover			
38:51	12 NIELSEN E for 38 HOXER M Goalkeeper back			
38:54		17 - 17	0	8 ITURIZZA V Goal fast break bottom left (20 NEVES M), 99.92 km/h
39:03	38 HOXER M for 12 NIELSEN E Empty goal			
39:25				8 ITURIZZA V 2-minutes suspension
40:06	19 GIDSEL M Goal left 9m bottom left (43 PYTLICK S), 95.76 km/h	18 - 17	+1	
40:07	12 NIELSEN E for 38 HOXER M Goalkeeper back			
40:34				26 COSTA F Shot right 6m post
40:51	26 HANSEN J for 12 NIELSEN E Empty goal			
41:00	43 PYTLICK S Goal left 6m bottom right (19 GIDSEL M), 99.05 km/h	19 - 17	+2	
41:01	12 NIELSEN E for 38 HOXER M Goalkeeper back			
41:16				79 COSTA M for 96 TONICHER P Empty goal
41:28	15 SAUGSTRUP M Steal			26 COSTA F Turnover
41:30				96 TONICHER P for 8 ITURIZZA V Goalkeeper back
41:33	15 SAUGSTRUP M Turnover			
42:00		19 - 18	+1	23 BRANQUINHO D Goal left wing top left (79 COSTA M), 84.86 km/h
42:12	26 HANSEN J for 12 NIELSEN E Empty goal			
42:47	19 GIDSEL M Shot breakthrough saved top right			
42:50	12 NIELSEN E for 38 HOXER M Goalkeeper back			
43:36	15 SAUGSTRUP M Block			79 COSTA M Shot centre 9m blocked
43:51		19 - 19	0	82 FRADE L Goal left 6m bottom left (14 SILVA R), 85.82 km/h
44:01	43 PYTLICK S Technical Fault			
44:06		19 - 20	-1	26 COSTA F Goal fast break middle left (82 FRADE L), 94.52 km/h
44:09	Team timeout			
44:09	15 SAUGSTRUP M for 12 NIELSEN E Empty goal			

#### OFFICIAL PARTNERS



#### EHF PARTNERS



#### NATIONAL SUPPLIERS



**Play by Play**

Match No: 12

**DEN 29 - 31 POR**  
(11 - 12) (18 - 19)

**2nd HALF**

Match Time	DEN - Denmark	Score	Lead	POR - Portugal
44:34	26 HANSEN J Goal right wing top centre (38 HOXER M), 37.14 km/h	20	-20	0
44:35	12 NIELSEN E for 38 HOXER M Goalkeeper back			
45:05		20	-21	-1
45:21	26 HANSEN J for 12 NIELSEN E Empty goal			25 AREIA A Goal right wing bottom left (79 COSTA M), 91.14 km/h
45:47	38 HOXER M Shot centre 9m saved middle right			
45:49	12 NIELSEN E for 26 HANSEN J Goalkeeper back			
46:24	4 LANDIN M 7m caused			79 COSTA M 7m received
46:30		20	-22	-2
46:59	26 HANSEN J for 12 NIELSEN E Empty goal			26 COSTA F Goal Penalty shot bottom left (79 COSTA M), 24.41 km/h
47:17	38 HOXER M Shot right 9m missed			
47:21	12 NIELSEN E for 26 HANSEN J Goalkeeper back			
47:47				26 COSTA F Shot centre 6m saved bottom centre
48:06	15 SAUGSTRUP M for 12 NIELSEN E Empty goal			
48:20	12 NIELSEN E for 38 HOXER M Goalkeeper back			
48:27	4 LANDIN M Goal left wing bottom right (43 PYTLICK S), 111.95 km/h	21	-22	-1
49:08		21	-23	-2
49:35	19 GIDSEL M Shot right 6m saved middle left			79 COSTA M Goal right 6m bottom right, 73.43 km/h
50:02		21	-24	-3
50:58	19 GIDSEL M Goal centre 9m top right (11 LAUGE R), 75.99 km/h	22	-24	-2
51:31		22	-25	-3
52:06	19 GIDSEL M Goal breakthrough bottom left, 37.94 km/h	23	-25	-2
52:40		23	-26	-3
53:22	15 SAUGSTRUP M Goal centre 6m top left (19 GIDSEL M), 101.92 km/h	24	-26	-2
54:26				14 SILVA R Shot centre 9m saved bottom centre
54:29				Video Replay (Punishment review) Punishment
54:29				8 ITURIZZA V Disqualification (red card-direct)
54:29	26 HANSEN J for 12 NIELSEN E Empty goal			
54:39	26 HANSEN J Goal right wing bottom centre (38 HOXER M), 84.13 km/h	25	-26	-1
54:42	12 NIELSEN E for 38 HOXER M Goalkeeper back			
55:01				79 COSTA M for 96 TONICHER P Empty goal
55:17		25	-27	-2
55:19				79 COSTA M Goal right 6m top right (26 COSTA F), 92.99 km/h
55:30	38 HOXER M for 12 NIELSEN E Empty goal			96 TONICHER P for 21 FERNANDES L Goalkeeper back
56:04	34 HALD S Goal centre 6m bottom right (19 GIDSEL M), 84.47 km/h	26	-27	-1
56:06	20 MOLLER K for 38 HOXER M Goalkeeper back			
56:19				79 COSTA M for 96 TONICHER P Empty goal
56:33				41 CAPDEVILLE G for 8 ITURIZZA V Goalkeeper back
56:34		26	-28	-2
56:45	Team timeout			26 COSTA F Goal centre 9m middle left, 96.82 km/h
57:25	19 GIDSEL M Goal centre 9m top left, 103.45 km/h	27	-28	-1
58:19		27	-29	-2
58:30	11 LAUGE R Goal breakthrough bottom right, 79.96 km/h	28	-29	-1
58:54		28	-30	-2
59:08	26 HANSEN J Shot right wing saved top left			25 AREIA A Goal right wing top right, 44.78 km/h
59:26				Team timeout
59:40		28	-31	-3
59:55	11 LAUGE R Goal breakthrough bottom left, 96.63 km/h	29	-31	-2

OFFICIAL PARTNERS



EHF PARTNERS



NATIONAL SUPPLIERS



## Empty Goal Analysis

Herning

Match No: 12

**DEN 29 - 31 POR**

(11 - 12) (18 - 19)

Referees: PAVICEVIC Ivan (MNE) / RAZNATOVIC Milos (MNE)

### ATTACKS DURING OWN EMPTY GOAL SITUATION

Players on Court	Attacks		Goals		Saves		Missed		Blocked		Post		Turnovers		Scoring Efficiency		Goals Against	
	DEN	POR	DEN	POR	DEN	POR	DEN	POR	DEN	POR	DEN	POR	DEN	POR	DEN	POR	DEN	POR
7 Against 6	9	3	6	2	2	1	1								67	67		
6 Against 6	4	1	1	1	1		1				1				25	100	1	
Others	5	1	3				1					1	1	60	0			
<b>Total:</b>	<b>18</b>	<b>5</b>	<b>10</b>	<b>3</b>	<b>3</b>	<b>1</b>	<b>3</b>				<b>1</b>		<b>1</b>	<b>1</b>	<b>56</b>	<b>60</b>	<b>1</b>	

### GOALS/ATTACKS DURING OWN EMPTY GOAL SITUATION - ANALYSIS OF OCCURRENCE (in 5 min intervals)

Players on Court	1st Half												
	0-5		5-10		10-15		15-20		20-25		25-30		
	DEN	POR	DEN	POR	DEN	POR	DEN	POR	DEN	POR	DEN	POR	
7 Against 6												0/1	
6 Against 6							0/2	1/1	1/2				
Others					1/1		0/1						
<b>Total:</b>					<b>1/1</b>		<b>0/3</b>	<b>1/1</b>	<b>1/2</b>	<b>0/1</b>			

Players on Court	2nd Half											
	30-35		35-40		40-45		45-50		50-55		55-60	
	DEN	POR	DEN	POR	DEN	POR	DEN	POR	DEN	POR	DEN	POR
7 Against 6	2/2		1/1		1/2		0/2		1/1		1/1	2/2
6 Against 6												
Others			0/1		2/2	0/1						
<b>Total:</b>	<b>2/2</b>		<b>1/2</b>		<b>3/4</b>	<b>0/1</b>	<b>0/2</b>		<b>1/1</b>		<b>1/1</b>	<b>2/2</b>

### GOALS/ATTACKS DURING OWN EMPTY GOAL SITUATION - ANALYSIS BY DURATION

Team	<15 sec.	15-30 sec.	30-45 sec.	45-60 sec.	>60 sec.
DEN	3/4	2/6	4/6	0/1	1/1
POR	0/2	2/2	1/1		

### SUBSTITUTION SUMMARY

Players	DEN	POR
Goalkeeper <-> Goalkeeper	2	5
Court Player <-> Goalkeeper	38	12
Court Player <-> Court Player	82	190
<b>Total:</b>	<b>122</b>	<b>207</b>

OFFICIAL PARTNERS



EHF PARTNERS



NATIONAL SUPPLIERS



### Preliminary Round - Group B

TUE 20 JAN 2026

Start Time: 20:30

### Line-Up Analysis

Herning

Attendance: 15.000

Match No: 12

DEN 29 - 31 POR

#### DEN - Denmark

Lineup efficiency								Time Played	GF	GA
4 LANDIN M	12 NIELSEN E	15 SAUGSTRUP M	19 GIDSEL M	34 HALD S	38 HOXER M	43 PYTLICK S	8:46	2	6	
7 JAKOBSEN E	11 LAUGE R	12 NIELSEN E	15 SAUGSTRUP M	19 GIDSEL M	33 BERGHOLT E	38 HOXER M	7:27	1	4	
7 JAKOBSEN E	11 LAUGE R	12 NIELSEN E	15 SAUGSTRUP M	19 GIDSEL M	38 HOXER M	43 PYTLICK S	6:19	6	1	
4 LANDIN M	15 SAUGSTRUP M	19 GIDSEL M	26 HANSEN J	34 HALD S	38 HOXER M	43 PYTLICK S	4:42	6	0	
4 LANDIN M	11 LAUGE R	12 NIELSEN E	15 SAUGSTRUP M	19 GIDSEL M	34 HALD S	43 PYTLICK S	3:53	1	5	
4 LANDIN M	11 LAUGE R	12 NIELSEN E	15 SAUGSTRUP M	19 GIDSEL M	26 HANSEN J	43 PYTLICK S	2:43	3	0	
4 LANDIN M	12 NIELSEN E	15 SAUGSTRUP M	19 GIDSEL M	28 ANDERSSON L	34 HALD S	38 HOXER M	2:21	0	0	
4 LANDIN M	11 LAUGE R	15 SAUGSTRUP M	19 GIDSEL M	20 MOLLER K	33 BERGHOLT E	43 PYTLICK S	2:17	2	3	
11 LAUGE R	12 NIELSEN E	15 SAUGSTRUP M	19 GIDSEL M	33 BERGHOLT E	38 HOXER M	43 PYTLICK S	2:00	0	1	
4 LANDIN M	12 NIELSEN E	15 SAUGSTRUP M	19 GIDSEL M	26 HANSEN J	34 HALD S	43 PYTLICK S	1:53	1	1	
4 LANDIN M	11 LAUGE R	12 NIELSEN E	15 SAUGSTRUP M	19 GIDSEL M	34 HALD S	38 HOXER M	1:46	0	1	
4 LANDIN M	11 LAUGE R	15 SAUGSTRUP M	19 GIDSEL M	34 HALD S	38 HOXER M	43 PYTLICK S	1:34	1	1	
4 LANDIN M	11 LAUGE R	12 NIELSEN E	19 GIDSEL M	34 HALD S	38 HOXER M	43 PYTLICK S	1:23	2	0	
7 JAKOBSEN E	11 LAUGE R	12 NIELSEN E	15 SAUGSTRUP M	19 GIDSEL M	34 HALD S	38 HOXER M	1:14	0	0	
7 JAKOBSEN E	11 LAUGE R	15 SAUGSTRUP M	19 GIDSEL M	33 BERGHOLT E	38 HOXER M	43 PYTLICK S	1:00	0	0	
4 LANDIN M	11 LAUGE R	15 SAUGSTRUP M	19 GIDSEL M	20 MOLLER K	26 HANSEN J	43 PYTLICK S	0:58	1	0	
7 JAKOBSEN E	12 NIELSEN E	15 SAUGSTRUP M	19 GIDSEL M	33 BERGHOLT E	38 HOXER M	43 PYTLICK S	0:56	0	1	
7 JAKOBSEN E	12 NIELSEN E	15 SAUGSTRUP M	19 GIDSEL M	28 ANDERSSON L	34 HALD S	38 HOXER M	0:40	0	1	
11 LAUGE R	12 NIELSEN E	15 SAUGSTRUP M	19 GIDSEL M	26 HANSEN J	33 BERGHOLT E	43 PYTLICK S	0:38	0	1	
4 LANDIN M	11 LAUGE R	15 SAUGSTRUP M	19 GIDSEL M	20 MOLLER K	34 HALD S	43 PYTLICK S	0:35	0	1	
11 LAUGE R	12 NIELSEN E	15 SAUGSTRUP M	19 GIDSEL M	26 HANSEN J	28 ANDERSSON L	43 PYTLICK S	0:26	0	0	
7 JAKOBSEN E	11 LAUGE R	12 NIELSEN E	19 GIDSEL M	34 HALD S	38 HOXER M	43 PYTLICK S	0:24	0	0	
4 LANDIN M	12 NIELSEN E	19 GIDSEL M	26 HANSEN J	34 HALD S	38 HOXER M	43 PYTLICK S	0:22	0	1	
7 JAKOBSEN E	11 LAUGE R	15 SAUGSTRUP M	19 GIDSEL M	20 MOLLER K	33 BERGHOLT E	38 HOXER M	0:21	0	0	
11 LAUGE R	15 SAUGSTRUP M	19 GIDSEL M	20 MOLLER K	33 BERGHOLT E	38 HOXER M	43 PYTLICK S	0:17	0	1	
4 LANDIN M	12 NIELSEN E	19 GIDSEL M	28 ANDERSSON L	34 HALD S	38 HOXER M	43 PYTLICK S	0:16	0	0	
7 JAKOBSEN E	15 SAUGSTRUP M	19 GIDSEL M	26 HANSEN J	33 BERGHOLT E	38 HOXER M	43 PYTLICK S	0:12	0	0	
7 JAKOBSEN E	15 SAUGSTRUP M	19 GIDSEL M	26 HANSEN J	28 ANDERSSON L	38 HOXER M	43 PYTLICK S	0:11	0	0	
4 LANDIN M	11 LAUGE R	12 NIELSEN E	15 SAUGSTRUP M	34 HALD S	38 HOXER M	43 PYTLICK S	0:09	0	0	
7 JAKOBSEN E	12 NIELSEN E	15 SAUGSTRUP M	19 GIDSEL M	34 HALD S	38 HOXER M	43 PYTLICK S	0:08	0	0	
4 LANDIN M	11 LAUGE R	15 SAUGSTRUP M	19 GIDSEL M	26 HANSEN J	38 HOXER M	43 PYTLICK S	0:08	0	0	
7 JAKOBSEN E	12 NIELSEN E	15 SAUGSTRUP M	19 GIDSEL M	26 HANSEN J	28 ANDERSSON L	43 PYTLICK S	0:05	1	0	
7 JAKOBSEN E	12 NIELSEN E	15 SAUGSTRUP M	19 GIDSEL M	26 HANSEN J	33 BERGHOLT E	38 HOXER M	0:04	0	0	
4 LANDIN M	15 SAUGSTRUP M	19 GIDSEL M	20 MOLLER K	26 HANSEN J	34 HALD S	43 PYTLICK S	0:04	0	0	
12 NIELSEN E	15 SAUGSTRUP M	19 GIDSEL M	26 HANSEN J	33 BERGHOLT E	38 HOXER M	43 PYTLICK S	0:03	0	0	
7 JAKOBSEN E	11 LAUGE R	15 SAUGSTRUP M	19 GIDSEL M	34 HALD S	38 HOXER M	43 PYTLICK S	0:03	0	0	
7 JAKOBSEN E	12 NIELSEN E	15 SAUGSTRUP M	19 GIDSEL M	28 ANDERSSON L	38 HOXER M	43 PYTLICK S	0:02	0	0	

Score development								Time Played	G Diff.
4 LANDIN M	15 SAUGSTRUP M	19 GIDSEL M	26 HANSEN J	34 HALD S	38 HOXER M	43 PYTLICK S	4:42	+6	
7 JAKOBSEN E	11 LAUGE R	12 NIELSEN E	15 SAUGSTRUP M	19 GIDSEL M	38 HOXER M	43 PYTLICK S	6:19	+5	
4 LANDIN M	11 LAUGE R	12 NIELSEN E	15 SAUGSTRUP M	19 GIDSEL M	26 HANSEN J	43 PYTLICK S	2:43	+3	
4 LANDIN M	11 LAUGE R	12 NIELSEN E	19 GIDSEL M	34 HALD S	38 HOXER M	43 PYTLICK S	1:23	+2	
7 JAKOBSEN E	12 NIELSEN E	15 SAUGSTRUP M	19 GIDSEL M	26 HANSEN J	28 ANDERSSON L	43 PYTLICK S	0:05	+1	
4 LANDIN M	11 LAUGE R	15 SAUGSTRUP M	19 GIDSEL M	20 MOLLER K	26 HANSEN J	43 PYTLICK S	0:58	+1	
7 JAKOBSEN E	12 NIELSEN E	15 SAUGSTRUP M	19 GIDSEL M	28 ANDERSSON L	38 HOXER M	43 PYTLICK S	0:02	0	
12 NIELSEN E	15 SAUGSTRUP M	19 GIDSEL M	26 HANSEN J	33 BERGHOLT E	38 HOXER M	43 PYTLICK S	0:03	0	
7 JAKOBSEN E	11 LAUGE R	15 SAUGSTRUP M	19 GIDSEL M	34 HALD S	38 HOXER M	43 PYTLICK S	0:03	0	
7 JAKOBSEN E	12 NIELSEN E	15 SAUGSTRUP M	19 GIDSEL M	26 HANSEN J	33 BERGHOLT E	38 HOXER M	0:04	0	
4 LANDIN M	15 SAUGSTRUP M	19 GIDSEL M	20 MOLLER K	26 HANSEN J	34 HALD S	43 PYTLICK S	0:04	0	
7 JAKOBSEN E	12 NIELSEN E	15 SAUGSTRUP M	19 GIDSEL M	34 HALD S	38 HOXER M	43 PYTLICK S	0:08	0	
4 LANDIN M	11 LAUGE R	15 SAUGSTRUP M	19 GIDSEL M	26 HANSEN J	38 HOXER M	43 PYTLICK S	0:08	0	
4 LANDIN M	11 LAUGE R	12 NIELSEN E	15 SAUGSTRUP M	34 HALD S	38 HOXER M	43 PYTLICK S	0:09	0	

#### OFFICIAL PARTNERS



#### EHF PARTNERS



#### NATIONAL SUPPLIERS



### Line-Up Analysis

Herning

Attendance: 15.000

Match No: 12

DEN 29 - 31 POR

#### DEN - Denmark

Score development								Time Played	G Diff.
7 JAKOBSEN E	15 SAUGSTRUP M	19 GIDSEL M	26 HANSEN J	28 ANDERSSON L	38 HOXER M	43 PYTLICK S	0:11	0	
7 JAKOBSEN E	15 SAUGSTRUP M	19 GIDSEL M	26 HANSEN J	33 BERGHOLT E	38 HOXER M	43 PYTLICK S	0:12	0	
4 LANDIN M	12 NIELSEN E	19 GIDSEL M	28 ANDERSSON L	34 HALD S	38 HOXER M	43 PYTLICK S	0:16	0	
7 JAKOBSEN E	11 LAUGE R	15 SAUGSTRUP M	19 GIDSEL M	20 MOLLER K	33 BERGHOLT E	38 HOXER M	0:21	0	
7 JAKOBSEN E	11 LAUGE R	12 NIELSEN E	19 GIDSEL M	34 HALD S	38 HOXER M	43 PYTLICK S	0:24	0	
11 LAUGE R	12 NIELSEN E	15 SAUGSTRUP M	19 GIDSEL M	26 HANSEN J	28 ANDERSSON L	43 PYTLICK S	0:26	0	
7 JAKOBSEN E	11 LAUGE R	15 SAUGSTRUP M	19 GIDSEL M	33 BERGHOLT E	38 HOXER M	43 PYTLICK S	1:00	0	
7 JAKOBSEN E	11 LAUGE R	12 NIELSEN E	15 SAUGSTRUP M	19 GIDSEL M	34 HALD S	38 HOXER M	1:14	0	
4 LANDIN M	11 LAUGE R	15 SAUGSTRUP M	19 GIDSEL M	34 HALD S	38 HOXER M	43 PYTLICK S	1:34	0	
4 LANDIN M	12 NIELSEN E	15 SAUGSTRUP M	19 GIDSEL M	26 HANSEN J	34 HALD S	43 PYTLICK S	1:53	0	
4 LANDIN M	12 NIELSEN E	15 SAUGSTRUP M	19 GIDSEL M	28 ANDERSSON L	34 HALD S	38 HOXER M	2:21	0	
11 LAUGE R	15 SAUGSTRUP M	19 GIDSEL M	20 MOLLER K	33 BERGHOLT E	38 HOXER M	43 PYTLICK S	0:17	-1	
4 LANDIN M	12 NIELSEN E	19 GIDSEL M	26 HANSEN J	34 HALD S	38 HOXER M	43 PYTLICK S	0:22	-1	
4 LANDIN M	11 LAUGE R	15 SAUGSTRUP M	19 GIDSEL M	20 MOLLER K	34 HALD S	43 PYTLICK S	0:35	-1	
11 LAUGE R	12 NIELSEN E	15 SAUGSTRUP M	19 GIDSEL M	26 HANSEN J	33 BERGHOLT E	43 PYTLICK S	0:38	-1	
7 JAKOBSEN E	12 NIELSEN E	15 SAUGSTRUP M	19 GIDSEL M	28 ANDERSSON L	34 HALD S	38 HOXER M	0:40	-1	
7 JAKOBSEN E	12 NIELSEN E	15 SAUGSTRUP M	19 GIDSEL M	33 BERGHOLT E	38 HOXER M	43 PYTLICK S	0:56	-1	
4 LANDIN M	11 LAUGE R	12 NIELSEN E	15 SAUGSTRUP M	19 GIDSEL M	34 HALD S	38 HOXER M	1:46	-1	
11 LAUGE R	12 NIELSEN E	15 SAUGSTRUP M	19 GIDSEL M	33 BERGHOLT E	38 HOXER M	43 PYTLICK S	2:00	-1	
4 LANDIN M	11 LAUGE R	15 SAUGSTRUP M	19 GIDSEL M	20 MOLLER K	33 BERGHOLT E	43 PYTLICK S	2:17	-1	
7 JAKOBSEN E	11 LAUGE R	12 NIELSEN E	15 SAUGSTRUP M	19 GIDSEL M	33 BERGHOLT E	38 HOXER M	7:27	-3	
4 LANDIN M	11 LAUGE R	12 NIELSEN E	15 SAUGSTRUP M	19 GIDSEL M	34 HALD S	43 PYTLICK S	3:53	-4	
4 LANDIN M	12 NIELSEN E	15 SAUGSTRUP M	19 GIDSEL M	34 HALD S	38 HOXER M	43 PYTLICK S	8:46	-4	

Empty Goal								Time Played	GF	GA
4 LANDIN M	15 SAUGSTRUP M	19 GIDSEL M	26 HANSEN J	34 HALD S	38 HOXER M	43 PYTLICK S	4:42	6	0	
4 LANDIN M	11 LAUGE R	15 SAUGSTRUP M	19 GIDSEL M	34 HALD S	38 HOXER M	43 PYTLICK S	1:34	1	1	
7 JAKOBSEN E	11 LAUGE R	15 SAUGSTRUP M	19 GIDSEL M	33 BERGHOLT E	38 HOXER M	43 PYTLICK S	1:00	0	0	
7 JAKOBSEN E	15 SAUGSTRUP M	19 GIDSEL M	26 HANSEN J	33 BERGHOLT E	38 HOXER M	43 PYTLICK S	0:12	0	0	
7 JAKOBSEN E	15 SAUGSTRUP M	19 GIDSEL M	26 HANSEN J	28 ANDERSSON L	38 HOXER M	43 PYTLICK S	0:11	0	0	
4 LANDIN M	11 LAUGE R	15 SAUGSTRUP M	19 GIDSEL M	26 HANSEN J	38 HOXER M	43 PYTLICK S	0:08	0	0	
7 JAKOBSEN E	11 LAUGE R	15 SAUGSTRUP M	19 GIDSEL M	34 HALD S	38 HOXER M	43 PYTLICK S	0:03	0	0	

#### OFFICIAL PARTNERS



#### EHF PARTNERS



#### NATIONAL SUPPLIERS



### Preliminary Round - Group B

### Line-Up Analysis

Herning

Attendance: 15.000

Match No: 12

DEN 29 - 31 POR

POR - Portugal

Lineup efficiency								Time Played	GF	GA
13 SALVADOR S	14 SILVA R	23 BRANQUINHO D	25 AREIA A	26 COSTA F	41 CAPDEVILLE G	82 FRADE L	4:49	3	0	
8 ITURIZZA V	13 SALVADOR S	20 NEVES M	23 BRANQUINHO D	26 COSTA F	41 CAPDEVILLE G	82 FRADE L	3:46	2	3	
8 ITURIZZA V	13 SALVADOR S	20 NEVES M	23 BRANQUINHO D	25 AREIA A	82 FRADE L	96 TONICHER P	2:47	1	2	
8 ITURIZZA V	14 SILVA R	21 FERNANDES L	25 AREIA A	26 COSTA F	41 CAPDEVILLE G	79 COSTA M	2:40	0	0	
8 ITURIZZA V	13 SALVADOR S	20 NEVES M	23 BRANQUINHO D	25 AREIA A	41 CAPDEVILLE G	82 FRADE L	2:32	0	2	
14 SILVA R	23 BRANQUINHO D	25 AREIA A	26 COSTA F	79 COSTA M	82 FRADE L	96 TONICHER P	2:28	3	0	
8 ITURIZZA V	14 SILVA R	23 BRANQUINHO D	25 AREIA A	26 COSTA F	41 CAPDEVILLE G	79 COSTA M	2:15	2	0	
8 ITURIZZA V	13 SALVADOR S	20 NEVES M	21 FERNANDES L	25 AREIA A	41 CAPDEVILLE G	79 COSTA M	2:12	1	2	
8 ITURIZZA V	13 SALVADOR S	20 NEVES M	21 FERNANDES L	26 COSTA F	41 CAPDEVILLE G	79 COSTA M	1:42	1	0	
8 ITURIZZA V	13 SALVADOR S	20 NEVES M	26 COSTA F	66 GOMES J	82 FRADE L	96 TONICHER P	1:42	0	2	
14 SILVA R	21 FERNANDES L	25 AREIA A	26 COSTA F	41 CAPDEVILLE G	79 COSTA M	82 FRADE L	1:41	4	0	
8 ITURIZZA V	13 SALVADOR S	23 BRANQUINHO D	25 AREIA A	26 COSTA F	82 FRADE L	96 TONICHER P	1:26	1	0	
8 ITURIZZA V	13 SALVADOR S	20 NEVES M	25 AREIA A	26 COSTA F	82 FRADE L	96 TONICHER P	1:23	0	2	
14 SILVA R	23 BRANQUINHO D	26 COSTA F	66 GOMES J	79 COSTA M	82 FRADE L	96 TONICHER P	1:21	3	0	
8 ITURIZZA V	13 SALVADOR S	14 SILVA R	20 NEVES M	21 FERNANDES L	41 CAPDEVILLE G	79 COSTA M	1:13	0	1	
8 ITURIZZA V	13 SALVADOR S	26 COSTA F	66 GOMES J	79 COSTA M	82 FRADE L	96 TONICHER P	1:13	0	1	
8 ITURIZZA V	13 SALVADOR S	14 SILVA R	20 NEVES M	23 BRANQUINHO D	41 CAPDEVILLE G	82 FRADE L	1:08	0	1	
8 ITURIZZA V	14 SILVA R	21 FERNANDES L	25 AREIA A	41 CAPDEVILLE G	66 GOMES J	79 COSTA M	1:00	1	0	
14 SILVA R	21 FERNANDES L	26 COSTA F	66 GOMES J	79 COSTA M	82 FRADE L	96 TONICHER P	1:00	1	0	
8 ITURIZZA V	13 SALVADOR S	21 FERNANDES L	26 COSTA F	66 GOMES J	82 FRADE L	96 TONICHER P	0:57	0	1	
13 SALVADOR S	14 SILVA R	23 BRANQUINHO D	26 COSTA F	41 CAPDEVILLE G	66 GOMES J	82 FRADE L	0:52	0	0	
8 ITURIZZA V	13 SALVADOR S	14 SILVA R	21 FERNANDES L	26 COSTA F	41 CAPDEVILLE G	79 COSTA M	0:51	0	0	
8 ITURIZZA V	14 SILVA R	20 NEVES M	25 AREIA A	26 COSTA F	79 COSTA M	96 TONICHER P	0:51	1	0	
8 ITURIZZA V	13 SALVADOR S	20 NEVES M	23 BRANQUINHO D	41 CAPDEVILLE G	66 GOMES J	82 FRADE L	0:47	0	0	
13 SALVADOR S	14 SILVA R	20 NEVES M	21 FERNANDES L	41 CAPDEVILLE G	66 GOMES J	82 FRADE L	0:44	0	1	
8 ITURIZZA V	13 SALVADOR S	14 SILVA R	23 BRANQUINHO D	26 COSTA F	41 CAPDEVILLE G	82 FRADE L	0:43	1	1	
8 ITURIZZA V	13 SALVADOR S	14 SILVA R	21 FERNANDES L	25 AREIA A	26 COSTA F	82 FRADE L	0:42	1	0	
8 ITURIZZA V	13 SALVADOR S	20 NEVES M	21 FERNANDES L	26 COSTA F	82 FRADE L	96 TONICHER P	0:42	0	1	
8 ITURIZZA V	13 SALVADOR S	20 NEVES M	21 FERNANDES L	26 COSTA F	41 CAPDEVILLE G	82 FRADE L	0:41	0	0	
8 ITURIZZA V	13 SALVADOR S	20 NEVES M	25 AREIA A	26 COSTA F	41 CAPDEVILLE G	82 FRADE L	0:41	0	1	
13 SALVADOR S	20 NEVES M	23 BRANQUINHO D	25 AREIA A	26 COSTA F	41 CAPDEVILLE G	82 FRADE L	0:37	0	0	
13 SALVADOR S	14 SILVA R	20 NEVES M	23 BRANQUINHO D	26 COSTA F	41 CAPDEVILLE G	82 FRADE L	0:35	0	1	
13 SALVADOR S	14 SILVA R	23 BRANQUINHO D	25 AREIA A	41 CAPDEVILLE G	66 GOMES J	82 FRADE L	0:35	0	0	
8 ITURIZZA V	14 SILVA R	20 NEVES M	23 BRANQUINHO D	25 AREIA A	41 CAPDEVILLE G	79 COSTA M	0:35	0	0	
8 ITURIZZA V	14 SILVA R	26 COSTA F	66 GOMES J	79 COSTA M	82 FRADE L	96 TONICHER P	0:33	0	0	
8 ITURIZZA V	13 SALVADOR S	14 SILVA R	20 NEVES M	25 AREIA A	41 CAPDEVILLE G	82 FRADE L	0:32	0	0	
8 ITURIZZA V	13 SALVADOR S	20 NEVES M	21 FERNANDES L	66 GOMES J	82 FRADE L	96 TONICHER P	0:32	0	1	
8 ITURIZZA V	14 SILVA R	21 FERNANDES L	26 COSTA F	66 GOMES J	79 COSTA M	82 FRADE L	0:32	1	0	
13 SALVADOR S	20 NEVES M	21 FERNANDES L	25 AREIA A	26 COSTA F	41 CAPDEVILLE G	82 FRADE L	0:31	0	0	
8 ITURIZZA V	13 SALVADOR S	20 NEVES M	21 FERNANDES L	25 AREIA A	41 CAPDEVILLE G	82 FRADE L	0:29	0	1	
8 ITURIZZA V	13 SALVADOR S	20 NEVES M	25 AREIA A	41 CAPDEVILLE G	79 COSTA M	82 FRADE L	0:28	0	1	
8 ITURIZZA V	13 SALVADOR S	23 BRANQUINHO D	25 AREIA A	26 COSTA F	41 CAPDEVILLE G	82 FRADE L	0:22	0	1	
8 ITURIZZA V	14 SILVA R	20 NEVES M	26 COSTA F	66 GOMES J	82 FRADE L	96 TONICHER P	0:21	0	0	
14 SILVA R	21 FERNANDES L	26 COSTA F	41 CAPDEVILLE G	66 GOMES J	79 COSTA M	82 FRADE L	0:21	1	0	
8 ITURIZZA V	13 SALVADOR S	21 FERNANDES L	25 AREIA A	26 COSTA F	41 CAPDEVILLE G	79 COSTA M	0:20	1	0	
8 ITURIZZA V	20 NEVES M	21 FERNANDES L	25 AREIA A	26 COSTA F	41 CAPDEVILLE G	79 COSTA M	0:20	0	0	
8 ITURIZZA V	13 SALVADOR S	14 SILVA R	20 NEVES M	25 AREIA A	26 COSTA F	41 CAPDEVILLE G	0:20	0	0	
14 SILVA R	20 NEVES M	21 FERNANDES L	25 AREIA A	26 COSTA F	41 CAPDEVILLE G	82 FRADE L	0:17	0	1	
8 ITURIZZA V	14 SILVA R	20 NEVES M	25 AREIA A	41 CAPDEVILLE G	79 COSTA M	82 FRADE L	0:16	0	0	
8 ITURIZZA V	13 SALVADOR S	23 BRANQUINHO D	26 COSTA F	66 GOMES J	82 FRADE L	96 TONICHER P	0:15	0	0	
13 SALVADOR S	20 NEVES M	25 AREIA A	26 COSTA F	41 CAPDEVILLE G	79 COSTA M	82 FRADE L	0:15	0	1	
13 SALVADOR S	14 SILVA R	20 NEVES M	23 BRANQUINHO D	25 AREIA A	41 CAPDEVILLE G	82 FRADE L	0:14	0	0	
8 ITURIZZA V	14 SILVA R	21 FERNANDES L	25 AREIA A	26 COSTA F	79 COSTA M	96 TONICHER P	0:14	0	0	
8 ITURIZZA V	14 SILVA R	23 BRANQUINHO D	25 AREIA A	26 COSTA F	79 COSTA M	82 FRADE L	0:14	0	0	

OFFICIAL PARTNERS



EHF PARTNERS



NATIONAL SUPPLIERS



### Preliminary Round - Group B

### Line-Up Analysis

Herning

Attendance: 15.000

Match No: 12

DEN 29 - 31 POR

POR - Portugal

Lineup efficiency								Time Played	GF	GA
13 SALVADOR S	14 SILVA R	20 NEVES M	23 BRANQUINHO D	66 GOMES J	82 FRADE L	96 TONICHER P	0:12	0	0	
8 ITURIZZA V	13 SALVADOR S	14 SILVA R	25 AREIA A	26 COSTA F	41 CAPDEVILLE G	82 FRADE L	0:12	0	1	
8 ITURIZZA V	13 SALVADOR S	23 BRANQUINHO D	25 AREIA A	26 COSTA F	41 CAPDEVILLE G	79 COSTA M	0:12	0	0	
8 ITURIZZA V	13 SALVADOR S	14 SILVA R	21 FERNANDES L	26 COSTA F	41 CAPDEVILLE G	82 FRADE L	0:11	0	0	
8 ITURIZZA V	14 SILVA R	20 NEVES M	23 BRANQUINHO D	25 AREIA A	41 CAPDEVILLE G	82 FRADE L	0:08	0	0	
8 ITURIZZA V	13 SALVADOR S	14 SILVA R	25 AREIA A	26 COSTA F	41 CAPDEVILLE G	79 COSTA M	0:08	1	0	
13 SALVADOR S	21 FERNANDES L	26 COSTA F	66 GOMES J	79 COSTA M	82 FRADE L	96 TONICHER P	0:08	0	0	
13 SALVADOR S	20 NEVES M	21 FERNANDES L	26 COSTA F	41 CAPDEVILLE G	66 GOMES J	82 FRADE L	0:08	0	0	
8 ITURIZZA V	14 SILVA R	21 FERNANDES L	25 AREIA A	26 COSTA F	79 COSTA M	82 FRADE L	0:07	0	0	
8 ITURIZZA V	13 SALVADOR S	14 SILVA R	21 FERNANDES L	25 AREIA A	26 COSTA F	79 COSTA M	0:07	0	0	
13 SALVADOR S	20 NEVES M	23 BRANQUINHO D	26 COSTA F	66 GOMES J	82 FRADE L	96 TONICHER P	0:07	0	0	
8 ITURIZZA V	23 BRANQUINHO D	26 COSTA F	66 GOMES J	79 COSTA M	82 FRADE L	96 TONICHER P	0:07	0	0	
14 SILVA R	20 NEVES M	21 FERNANDES L	26 COSTA F	41 CAPDEVILLE G	66 GOMES J	82 FRADE L	0:07	0	0	
8 ITURIZZA V	13 SALVADOR S	14 SILVA R	21 FERNANDES L	41 CAPDEVILLE G	79 COSTA M	82 FRADE L	0:06	0	0	
8 ITURIZZA V	14 SILVA R	23 BRANQUINHO D	26 COSTA F	66 GOMES J	82 FRADE L	96 TONICHER P	0:06	0	0	
13 SALVADOR S	14 SILVA R	21 FERNANDES L	25 AREIA A	26 COSTA F	41 CAPDEVILLE G	82 FRADE L	0:05	0	0	
8 ITURIZZA V	13 SALVADOR S	14 SILVA R	21 FERNANDES L	26 COSTA F	79 COSTA M	82 FRADE L	0:05	0	0	
8 ITURIZZA V	13 SALVADOR S	14 SILVA R	21 FERNANDES L	25 AREIA A	41 CAPDEVILLE G	79 COSTA M	0:05	0	0	
13 SALVADOR S	14 SILVA R	20 NEVES M	23 BRANQUINHO D	41 CAPDEVILLE G	66 GOMES J	82 FRADE L	0:05	0	0	
8 ITURIZZA V	13 SALVADOR S	14 SILVA R	23 BRANQUINHO D	25 AREIA A	26 COSTA F	96 TONICHER P	0:05	0	0	
13 SALVADOR S	20 NEVES M	23 BRANQUINHO D	25 AREIA A	26 COSTA F	82 FRADE L	96 TONICHER P	0:05	0	0	
8 ITURIZZA V	13 SALVADOR S	14 SILVA R	23 BRANQUINHO D	25 AREIA A	26 COSTA F	41 CAPDEVILLE G	0:04	0	0	
8 ITURIZZA V	13 SALVADOR S	23 BRANQUINHO D	25 AREIA A	26 COSTA F	79 COSTA M	96 TONICHER P	0:04	0	0	
8 ITURIZZA V	14 SILVA R	20 NEVES M	25 AREIA A	26 COSTA F	82 FRADE L	96 TONICHER P	0:04	0	0	
8 ITURIZZA V	14 SILVA R	20 NEVES M	21 FERNANDES L	25 AREIA A	41 CAPDEVILLE G	79 COSTA M	0:03	0	0	
8 ITURIZZA V	13 SALVADOR S	14 SILVA R	20 NEVES M	21 FERNANDES L	26 COSTA F	79 COSTA M	0:03	0	0	
8 ITURIZZA V	13 SALVADOR S	20 NEVES M	25 AREIA A	26 COSTA F	79 COSTA M	96 TONICHER P	0:03	0	0	
8 ITURIZZA V	14 SILVA R	20 NEVES M	23 BRANQUINHO D	25 AREIA A	82 FRADE L	96 TONICHER P	0:03	0	0	
8 ITURIZZA V	23 BRANQUINHO D	25 AREIA A	26 COSTA F	79 COSTA M	82 FRADE L	96 TONICHER P	0:03	1	0	
13 SALVADOR S	14 SILVA R	26 COSTA F	66 GOMES J	79 COSTA M	82 FRADE L	96 TONICHER P	0:03	0	0	
8 ITURIZZA V	14 SILVA R	21 FERNANDES L	26 COSTA F	79 COSTA M	82 FRADE L	96 TONICHER P	0:03	0	0	
13 SALVADOR S	21 FERNANDES L	26 COSTA F	41 CAPDEVILLE G	66 GOMES J	79 COSTA M	82 FRADE L	0:03	0	0	
8 ITURIZZA V	13 SALVADOR S	14 SILVA R	23 BRANQUINHO D	25 AREIA A	41 CAPDEVILLE G	82 FRADE L	0:02	0	0	
8 ITURIZZA V	13 SALVADOR S	20 NEVES M	23 BRANQUINHO D	25 AREIA A	26 COSTA F	41 CAPDEVILLE G	0:02	0	0	
8 ITURIZZA V	14 SILVA R	23 BRANQUINHO D	25 AREIA A	26 COSTA F	82 FRADE L	96 TONICHER P	0:02	0	0	
14 SILVA R	20 NEVES M	25 AREIA A	26 COSTA F	79 COSTA M	82 FRADE L	96 TONICHER P	0:02	0	0	
8 ITURIZZA V	13 SALVADOR S	21 FERNANDES L	26 COSTA F	79 COSTA M	82 FRADE L	96 TONICHER P	0:02	0	0	
8 ITURIZZA V	14 SILVA R	23 BRANQUINHO D	25 AREIA A	26 COSTA F	79 COSTA M	96 TONICHER P	0:01	0	0	

Score development								Time Played	G Diff.
14 SILVA R	21 FERNANDES L	25 AREIA A	26 COSTA F	41 CAPDEVILLE G	79 COSTA M	82 FRADE L	1:41	+4	
14 SILVA R	23 BRANQUINHO D	26 COSTA F	66 GOMES J	79 COSTA M	82 FRADE L	96 TONICHER P	1:21	+3	
14 SILVA R	23 BRANQUINHO D	25 AREIA A	26 COSTA F	79 COSTA M	82 FRADE L	96 TONICHER P	2:28	+3	
13 SALVADOR S	14 SILVA R	23 BRANQUINHO D	25 AREIA A	26 COSTA F	41 CAPDEVILLE G	82 FRADE L	4:49	+3	
8 ITURIZZA V	14 SILVA R	23 BRANQUINHO D	25 AREIA A	26 COSTA F	41 CAPDEVILLE G	79 COSTA M	2:15	+2	
8 ITURIZZA V	23 BRANQUINHO D	25 AREIA A	26 COSTA F	79 COSTA M	82 FRADE L	96 TONICHER P	0:03	+1	
8 ITURIZZA V	13 SALVADOR S	14 SILVA R	25 AREIA A	26 COSTA F	41 CAPDEVILLE G	79 COSTA M	0:08	+1	
8 ITURIZZA V	13 SALVADOR S	21 FERNANDES L	25 AREIA A	26 COSTA F	41 CAPDEVILLE G	79 COSTA M	0:20	+1	
14 SILVA R	21 FERNANDES L	26 COSTA F	41 CAPDEVILLE G	66 GOMES J	79 COSTA M	82 FRADE L	0:21	+1	
8 ITURIZZA V	14 SILVA R	21 FERNANDES L	26 COSTA F	66 GOMES J	79 COSTA M	82 FRADE L	0:32	+1	
8 ITURIZZA V	13 SALVADOR S	14 SILVA R	21 FERNANDES L	25 AREIA A	26 COSTA F	82 FRADE L	0:42	+1	
8 ITURIZZA V	14 SILVA R	20 NEVES M	25 AREIA A	26 COSTA F	79 COSTA M	96 TONICHER P	0:51	+1	
8 ITURIZZA V	14 SILVA R	21 FERNANDES L	25 AREIA A	41 CAPDEVILLE G	66 GOMES J	79 COSTA M	1:00	+1	

OFFICIAL PARTNERS



EHF PARTNERS



NATIONAL SUPPLIERS



### Line-Up Analysis

Herning

Attendance: 15.000

Match No: 12

DEN 29 - 31 POR

POR - Portugal

Score development								Time Played	G Diff.
14 SILVA R	21 FERNANDES L	26 COSTA F	66 GOMES J	79 COSTA M	82 FRADE L	96 TONICHER P	1:00	+1	
8 ITURIZZA V	13 SALVADOR S	23 BRANQUINHO D	25 AREIA A	26 COSTA F	82 FRADE L	96 TONICHER P	1:26	+1	
8 ITURIZZA V	13 SALVADOR S	20 NEVES M	21 FERNANDES L	26 COSTA F	41 CAPDEVILLE G	79 COSTA M	1:42	+1	
8 ITURIZZA V	14 SILVA R	23 BRANQUINHO D	25 AREIA A	26 COSTA F	79 COSTA M	96 TONICHER P	0:01	0	
8 ITURIZZA V	13 SALVADOR S	14 SILVA R	23 BRANQUINHO D	25 AREIA A	41 CAPDEVILLE G	82 FRADE L	0:02	0	
8 ITURIZZA V	13 SALVADOR S	20 NEVES M	23 BRANQUINHO D	25 AREIA A	26 COSTA F	41 CAPDEVILLE G	0:02	0	
8 ITURIZZA V	14 SILVA R	23 BRANQUINHO D	25 AREIA A	26 COSTA F	82 FRADE L	96 TONICHER P	0:02	0	
14 SILVA R	20 NEVES M	25 AREIA A	26 COSTA F	79 COSTA M	82 FRADE L	96 TONICHER P	0:02	0	
8 ITURIZZA V	13 SALVADOR S	21 FERNANDES L	26 COSTA F	79 COSTA M	82 FRADE L	96 TONICHER P	0:02	0	
8 ITURIZZA V	14 SILVA R	20 NEVES M	21 FERNANDES L	25 AREIA A	41 CAPDEVILLE G	79 COSTA M	0:03	0	
8 ITURIZZA V	13 SALVADOR S	14 SILVA R	20 NEVES M	21 FERNANDES L	26 COSTA F	79 COSTA M	0:03	0	
8 ITURIZZA V	13 SALVADOR S	20 NEVES M	25 AREIA A	26 COSTA F	79 COSTA M	96 TONICHER P	0:03	0	
8 ITURIZZA V	14 SILVA R	20 NEVES M	23 BRANQUINHO D	25 AREIA A	82 FRADE L	96 TONICHER P	0:03	0	
13 SALVADOR S	14 SILVA R	26 COSTA F	66 GOMES J	79 COSTA M	82 FRADE L	96 TONICHER P	0:03	0	
8 ITURIZZA V	14 SILVA R	21 FERNANDES L	26 COSTA F	79 COSTA M	82 FRADE L	96 TONICHER P	0:03	0	
13 SALVADOR S	21 FERNANDES L	26 COSTA F	41 CAPDEVILLE G	66 GOMES J	79 COSTA M	82 FRADE L	0:03	0	
8 ITURIZZA V	13 SALVADOR S	14 SILVA R	23 BRANQUINHO D	25 AREIA A	26 COSTA F	41 CAPDEVILLE G	0:04	0	
8 ITURIZZA V	13 SALVADOR S	23 BRANQUINHO D	25 AREIA A	26 COSTA F	79 COSTA M	96 TONICHER P	0:04	0	
8 ITURIZZA V	14 SILVA R	20 NEVES M	25 AREIA A	26 COSTA F	82 FRADE L	96 TONICHER P	0:04	0	
13 SALVADOR S	14 SILVA R	21 FERNANDES L	25 AREIA A	26 COSTA F	41 CAPDEVILLE G	82 FRADE L	0:05	0	
8 ITURIZZA V	13 SALVADOR S	14 SILVA R	21 FERNANDES L	26 COSTA F	79 COSTA M	82 FRADE L	0:05	0	
8 ITURIZZA V	13 SALVADOR S	14 SILVA R	21 FERNANDES L	25 AREIA A	41 CAPDEVILLE G	79 COSTA M	0:05	0	
13 SALVADOR S	14 SILVA R	20 NEVES M	23 BRANQUINHO D	41 CAPDEVILLE G	66 GOMES J	82 FRADE L	0:05	0	
8 ITURIZZA V	13 SALVADOR S	14 SILVA R	23 BRANQUINHO D	25 AREIA A	26 COSTA F	96 TONICHER P	0:05	0	
13 SALVADOR S	20 NEVES M	23 BRANQUINHO D	25 AREIA A	26 COSTA F	82 FRADE L	96 TONICHER P	0:05	0	
8 ITURIZZA V	13 SALVADOR S	14 SILVA R	21 FERNANDES L	41 CAPDEVILLE G	79 COSTA M	82 FRADE L	0:06	0	
8 ITURIZZA V	14 SILVA R	23 BRANQUINHO D	26 COSTA F	66 GOMES J	82 FRADE L	96 TONICHER P	0:06	0	
8 ITURIZZA V	14 SILVA R	21 FERNANDES L	25 AREIA A	26 COSTA F	79 COSTA M	82 FRADE L	0:07	0	
8 ITURIZZA V	13 SALVADOR S	14 SILVA R	21 FERNANDES L	25 AREIA A	26 COSTA F	79 COSTA M	0:07	0	
13 SALVADOR S	20 NEVES M	23 BRANQUINHO D	26 COSTA F	66 GOMES J	82 FRADE L	96 TONICHER P	0:07	0	
8 ITURIZZA V	23 BRANQUINHO D	26 COSTA F	66 GOMES J	79 COSTA M	82 FRADE L	96 TONICHER P	0:07	0	
14 SILVA R	20 NEVES M	21 FERNANDES L	26 COSTA F	41 CAPDEVILLE G	66 GOMES J	82 FRADE L	0:07	0	
8 ITURIZZA V	14 SILVA R	20 NEVES M	23 BRANQUINHO D	25 AREIA A	41 CAPDEVILLE G	82 FRADE L	0:08	0	
13 SALVADOR S	21 FERNANDES L	26 COSTA F	66 GOMES J	79 COSTA M	82 FRADE L	96 TONICHER P	0:08	0	
13 SALVADOR S	20 NEVES M	21 FERNANDES L	26 COSTA F	41 CAPDEVILLE G	66 GOMES J	82 FRADE L	0:08	0	
8 ITURIZZA V	13 SALVADOR S	14 SILVA R	21 FERNANDES L	26 COSTA F	41 CAPDEVILLE G	82 FRADE L	0:11	0	
13 SALVADOR S	14 SILVA R	20 NEVES M	23 BRANQUINHO D	66 GOMES J	82 FRADE L	96 TONICHER P	0:12	0	
8 ITURIZZA V	13 SALVADOR S	23 BRANQUINHO D	25 AREIA A	26 COSTA F	41 CAPDEVILLE G	79 COSTA M	0:12	0	
13 SALVADOR S	14 SILVA R	20 NEVES M	23 BRANQUINHO D	25 AREIA A	41 CAPDEVILLE G	82 FRADE L	0:14	0	
8 ITURIZZA V	14 SILVA R	21 FERNANDES L	25 AREIA A	26 COSTA F	79 COSTA M	96 TONICHER P	0:14	0	
8 ITURIZZA V	14 SILVA R	23 BRANQUINHO D	25 AREIA A	26 COSTA F	79 COSTA M	82 FRADE L	0:14	0	
8 ITURIZZA V	13 SALVADOR S	23 BRANQUINHO D	26 COSTA F	66 GOMES J	82 FRADE L	96 TONICHER P	0:15	0	
8 ITURIZZA V	14 SILVA R	20 NEVES M	25 AREIA A	41 CAPDEVILLE G	79 COSTA M	82 FRADE L	0:16	0	
8 ITURIZZA V	20 NEVES M	21 FERNANDES L	25 AREIA A	26 COSTA F	41 CAPDEVILLE G	79 COSTA M	0:20	0	
8 ITURIZZA V	13 SALVADOR S	14 SILVA R	20 NEVES M	25 AREIA A	26 COSTA F	41 CAPDEVILLE G	0:20	0	
8 ITURIZZA V	14 SILVA R	20 NEVES M	26 COSTA F	66 GOMES J	82 FRADE L	96 TONICHER P	0:21	0	
13 SALVADOR S	20 NEVES M	21 FERNANDES L	25 AREIA A	26 COSTA F	41 CAPDEVILLE G	82 FRADE L	0:31	0	
8 ITURIZZA V	13 SALVADOR S	14 SILVA R	20 NEVES M	25 AREIA A	41 CAPDEVILLE G	82 FRADE L	0:32	0	
8 ITURIZZA V	14 SILVA R	26 COSTA F	66 GOMES J	79 COSTA M	82 FRADE L	96 TONICHER P	0:33	0	
13 SALVADOR S	14 SILVA R	23 BRANQUINHO D	25 AREIA A	41 CAPDEVILLE G	66 GOMES J	82 FRADE L	0:35	0	
8 ITURIZZA V	14 SILVA R	20 NEVES M	23 BRANQUINHO D	25 AREIA A	41 CAPDEVILLE G	79 COSTA M	0:35	0	
13 SALVADOR S	20 NEVES M	23 BRANQUINHO D	25 AREIA A	26 COSTA F	41 CAPDEVILLE G	82 FRADE L	0:37	0	
8 ITURIZZA V	13 SALVADOR S	20 NEVES M	21 FERNANDES L	26 COSTA F	41 CAPDEVILLE G	82 FRADE L	0:41	0	
8 ITURIZZA V	13 SALVADOR S	14 SILVA R	23 BRANQUINHO D	26 COSTA F	41 CAPDEVILLE G	82 FRADE L	0:43	0	

OFFICIAL PARTNERS



EHF PARTNERS



NATIONAL SUPPLIERS



## Line-Up Analysis

Herning

Attendance: 15.000

Match No: 12

DEN 29 - 31 POR

### POR - Portugal

Score development								Time Played	G Diff.
8 ITURIZZA V	13 SALVADOR S	20 NEVES M	23 BRANQUINHO D	41 CAPDEVILLE G	66 GOMES J	82 FRADE L	0:47	0	
8 ITURIZZA V	13 SALVADOR S	14 SILVA R	21 FERNANDES L	26 COSTA F	41 CAPDEVILLE G	79 COSTA M	0:51	0	
13 SALVADOR S	14 SILVA R	23 BRANQUINHO D	26 COSTA F	41 CAPDEVILLE G	66 GOMES J	82 FRADE L	0:52	0	
8 ITURIZZA V	14 SILVA R	21 FERNANDES L	25 AREIA A	26 COSTA F	41 CAPDEVILLE G	79 COSTA M	2:40	0	
8 ITURIZZA V	13 SALVADOR S	14 SILVA R	25 AREIA A	26 COSTA F	41 CAPDEVILLE G	82 FRADE L	0:12	-1	
13 SALVADOR S	20 NEVES M	25 AREIA A	26 COSTA F	41 CAPDEVILLE G	79 COSTA M	82 FRADE L	0:15	-1	
14 SILVA R	20 NEVES M	21 FERNANDES L	25 AREIA A	26 COSTA F	41 CAPDEVILLE G	82 FRADE L	0:17	-1	
8 ITURIZZA V	13 SALVADOR S	23 BRANQUINHO D	25 AREIA A	26 COSTA F	41 CAPDEVILLE G	82 FRADE L	0:22	-1	
8 ITURIZZA V	13 SALVADOR S	20 NEVES M	25 AREIA A	41 CAPDEVILLE G	79 COSTA M	82 FRADE L	0:28	-1	
8 ITURIZZA V	13 SALVADOR S	20 NEVES M	21 FERNANDES L	25 AREIA A	41 CAPDEVILLE G	82 FRADE L	0:29	-1	
8 ITURIZZA V	13 SALVADOR S	20 NEVES M	21 FERNANDES L	66 GOMES J	82 FRADE L	96 TONICHER P	0:32	-1	
13 SALVADOR S	14 SILVA R	20 NEVES M	23 BRANQUINHO D	26 COSTA F	41 CAPDEVILLE G	82 FRADE L	0:35	-1	
8 ITURIZZA V	13 SALVADOR S	20 NEVES M	25 AREIA A	26 COSTA F	41 CAPDEVILLE G	82 FRADE L	0:41	-1	
8 ITURIZZA V	13 SALVADOR S	20 NEVES M	21 FERNANDES L	26 COSTA F	82 FRADE L	96 TONICHER P	0:42	-1	
13 SALVADOR S	14 SILVA R	20 NEVES M	21 FERNANDES L	41 CAPDEVILLE G	66 GOMES J	82 FRADE L	0:44	-1	
8 ITURIZZA V	13 SALVADOR S	21 FERNANDES L	26 COSTA F	66 GOMES J	82 FRADE L	96 TONICHER P	0:57	-1	
8 ITURIZZA V	13 SALVADOR S	14 SILVA R	20 NEVES M	23 BRANQUINHO D	41 CAPDEVILLE G	82 FRADE L	1:08	-1	
8 ITURIZZA V	13 SALVADOR S	14 SILVA R	20 NEVES M	21 FERNANDES L	41 CAPDEVILLE G	79 COSTA M	1:13	-1	
8 ITURIZZA V	13 SALVADOR S	26 COSTA F	66 GOMES J	79 COSTA M	82 FRADE L	96 TONICHER P	1:13	-1	
8 ITURIZZA V	13 SALVADOR S	20 NEVES M	21 FERNANDES L	25 AREIA A	41 CAPDEVILLE G	79 COSTA M	2:12	-1	
8 ITURIZZA V	13 SALVADOR S	20 NEVES M	23 BRANQUINHO D	25 AREIA A	82 FRADE L	96 TONICHER P	2:47	-1	
8 ITURIZZA V	13 SALVADOR S	20 NEVES M	23 BRANQUINHO D	26 COSTA F	41 CAPDEVILLE G	82 FRADE L	3:46	-1	
8 ITURIZZA V	13 SALVADOR S	20 NEVES M	25 AREIA A	26 COSTA F	82 FRADE L	96 TONICHER P	1:23	-2	
8 ITURIZZA V	13 SALVADOR S	20 NEVES M	26 COSTA F	66 GOMES J	82 FRADE L	96 TONICHER P	1:42	-2	
8 ITURIZZA V	13 SALVADOR S	20 NEVES M	23 BRANQUINHO D	25 AREIA A	41 CAPDEVILLE G	82 FRADE L	2:32	-2	

Empty Goal								Time Played	GF	GA
8 ITURIZZA V	13 SALVADOR S	14 SILVA R	21 FERNANDES L	25 AREIA A	26 COSTA F	82 FRADE L	0:42	1	0	
8 ITURIZZA V	14 SILVA R	21 FERNANDES L	26 COSTA F	66 GOMES J	79 COSTA M	82 FRADE L	0:32	1	0	
8 ITURIZZA V	14 SILVA R	23 BRANQUINHO D	25 AREIA A	26 COSTA F	79 COSTA M	82 FRADE L	0:14	0	0	
8 ITURIZZA V	14 SILVA R	21 FERNANDES L	25 AREIA A	26 COSTA F	79 COSTA M	82 FRADE L	0:07	0	0	
8 ITURIZZA V	13 SALVADOR S	14 SILVA R	21 FERNANDES L	25 AREIA A	26 COSTA F	79 COSTA M	0:07	0	0	
8 ITURIZZA V	13 SALVADOR S	14 SILVA R	21 FERNANDES L	26 COSTA F	79 COSTA M	82 FRADE L	0:05	0	0	
8 ITURIZZA V	13 SALVADOR S	14 SILVA R	20 NEVES M	21 FERNANDES L	26 COSTA F	79 COSTA M	0:03	0	0	

Legend:  
G Diff. Goals Difference

#### OFFICIAL PARTNERS



#### EHF PARTNERS



#### NATIONAL SUPPLIERS

