

**Start List**  
**Match No: 23**

**FAR - DEN**

**Referees:** ALTMAR Kristof (HUN) / HORVATH Marton (HUN)  
**Reserve:** DOYCHINOV Georgi (BUL) / GORETSOV Yulian (BUL)

**EHF Supervisor:** VOJIC Arijana (BIH)  
**EHF Observer:** DIMKOVA Rositza (BUL)  
**Timekeeper:** TRABER Christian  
**Scorekeeper:** TRABER Beatrice

**FAR - Faroe Islands**

No.	Name	Pos.	Height m	Int. Matches		Competition Statistics								
				MP	G	MP	G	7mG	YC	2Min	RC	S	7mS	
1	PETERSEN Annika Fridheim	GK	1.79	32	30	2							26	1
88	WARDUM Rakul S.	GK	1.76	24	1	2							9	2
2	EGHOLM Elsa	LB	1.73	21	22	2	1				1			
4	PÁLSDÓTTIR Brynhild	RW	1.73	11	11	2	1							
7	OSBERG JOHANSEN Bjarta	P	1.69	41	39	2	1				2			
8	OLSEN Rannvá	LW	1.67	17	26	1								
10	HANSEN Sína Krossteig	CB	1.67	35	80	2	2							
11	ARGE Lukka	CB	1.79	6	14	1	2	2						
13	HØJ Brynja	P	1.71	27	11	2								
17	ZACHARIASEN Liv Bentsdottir	LB	1.77	13	7	1								
18	BRANDENBORG Pernille	P	1.85	45	76	2	11	3						
21	PALSDOTTIR NÓLSOY Maria	CB	1.76	17	44	2	1				1			
22	FRANKSDOTTIR JOENSEN Bjørk	RB	1.69	11	9	1								
23	SVEINBJØRNSDÓTTIR POULSEN Liv	RW	1.73	30	55	2	1							
33	SAMUELSEN Turid Arge	LW	1.63	42	130	2	7							
77	MITTÚN Jana	CB	1.72	24	107	2	12							
(NN)	HALSDÓTTIR WEYHE Anna Elisabeth	LW	1.66	10	26	2	3	2				1		
(NN)	MORTENSEN Marita	LB	1.77	18	17	2								
<b>Headcoach</b>		MOGENSEN Claus Leth (DEN)		<b>Bench/Team</b>										

FAR Played		
PR	SUI	25- 28
PR	CRO	17- 17
PR	DEN	3 DEC

**DEN - Denmark**

No.	Name	Pos.	Height m	Int. Matches		Competition Statistics								
				MP	G	MP	G	7mG	YC	2Min	RC	S	7mS	
12	KRISTENSEN Anna Opstrup	GK	1.83	36	0	2							24	2
16	REINHARDT Althea Rebecca	GK	1.80	128	0	2							12	
3	NIELSEN Kaja Kamp	P	1.72	13	14	2	2							
4	HANSEN Helene Kindberg	RB	1.79	9	20	2	1							
5	IVERSEN Sarah	P	1.77	106	178	2	6				1			
6	HAGESØ Helena Elver	RB	1.75	38	68	2	8							
8	HANSEN Anne Mette	LB	1.82	179	521	2	6				1			
21	AAGOT HANSEN Andrea	RW	1.77	47	82	2	10	5			1			
23	JØRGENSEN Kristina	LB	1.87	125	379	2	5	1						
25	JENSEN ØSTERGAARD Trine	RW	1.66	198	395	2	2				1			
26	JØRGENSEN Stine Eiberg	LB	1.81	8	3	2					1			
32	HØJLUND Mie Enggrob	RB	1.80	116	236	2	3				1			
33	FRIIS Emma Cecilie Uhrskov	LW	1.62	73	226	2	13	1						
34	IVERSEN Rikke	P	1.78	92	141	2	1		1		1			
41	HALILCEVIC Elma	LW	1.68	35	72									
42	MØLLER Michala Elsberg	LB	1.78	36	61	2	9	1						
(NN)	HAUGSTED Line	RB	1.80	113	145	2	3					1		
<b>Headcoach</b>		JENSEN Jesper		<b>Bench/Team</b>										

DEN Played		
PR	CRO	34- 26
PR	SUI	35- 30
PR	FAR	3 DEC

**Notes:**  
Players below the bold line are not playing in this match.

Legend:			
<b>(NN)</b>	Not nominated	<b>2Min</b>	2-Minute Suspensions
<b>CB</b>	Centre Back	<b>G</b>	Goals
<b>LW</b>	Left Wing	<b>MP</b>	Matches Played
<b>PR</b>	Preliminary Round	<b>RB</b>	Right Back
<b>RW</b>	Right Wing	<b>S</b>	Saves
<b>7mG</b>	7-metre Goals	<b>GK</b>	Goalkeeper
<b>P</b>	Line Player	<b>LB</b>	Left Back
<b>RC</b>	Red Cards (Direct and after 3rd 2-Minute Suspension)	<b>Pos</b>	Position
<b>YC</b>	Yellow Cards		

## Results

### Match No: 23

## FAR 24 - 33 DEN

(8 - 15) (16 - 18)

Attendance: 3.074

Referees: ALTMAR Kristof (HUN) / HORVATH Marton (HUN)

#### Faroe Islands

Coach: MOGENSEN Claus Leth

YC/RC Bench Officials: 1/0 Time outs: 2

No.	Name	Total		Goals / Shots							Punishments			TP		
		G/S	%	7m	6m	Wing	BT	FB	FTO	9m	EG	YC	RC		2M	
1	PETERSEN Annika Fridheim															12:50
2	EGHOLM Elsa	0/3	0		0/2		0/1									16:12
4	PALSDOTTIR Brynhild	5/7	71		2/2	3/4		0/1								36:56
7	OSBERG JOHANSEN Bjarta															12:18
8	OLSEN Rannvá	0/1	0				0/1									21:55
10	HANSEN Súna Krossteig	2/3	67				2/2			0/1						45:47
11	ARGE Lukka	0/1	0	0/1												16:43
13	HOJ Brynja												1			6:57
17	ZACHARIASEN Liv Bentsdottir	0/1	0							0/1				1		6:53
18	BRANDENBORG Pernille	10/12	83	3/3	4/6		1/1			1/1	1/1					58:46
21	PALSDOTTIR NOLSOY Maria	1/4	25		1/3					0/1				1		26:45
22	FRANKSDOTTIR JOENSEN Bjork															
23	SVEINBJORNSDOTTIR POULSEN Liv	2/5	40			2/5										23:18
33	SAMUELSEN Turid Arge	2/2	100		1/1	1/1										38:36
77	MITTUN Jana	2/11	18		0/1	0/1	2/6	0/2		0/1						53:06
88	WARDUM Rakul S.															36:36
Bench Officials													1			
Totals		24/50	48	3/4	8/15	6/12	4/9	1/4		1/5	1/1		1	1	2	60:00

No.	Name	Total		Saves / Shots							
		S/S	%	7m	6m	Wing	BT	FB	FTO	9m	
1	PETERSEN Annika Fridheim	2/13	15	0/2	1/5	0/2	1/3			0/1	
88	WARDUM Rakul S.	7/27	26	1/3	1/7	0/4	0/5	2/3		3/5	
EG		2									
Totals		9/42	21	1/5	2/12	0/6	1/8	2/4		3/6	

#### Denmark

Coach: JENSEN Jesper

Time outs: 3

No.	Name	Total		Goals / Shots							Punishments			TP		
		G/S	%	7m	6m	Wing	BT	FB	FTO	9m	EG	YC	RC		2M	
3	NIELSEN Kaja Kamp	4/4	100		4/4											24:37
4	HANSEN Helene Kindberg	4/4	100		1/1		3/3									22:05
5	IVERSEN Sarah	2/3	67		2/3								1			26:53
6	HAGESO Helena Elver															
8	HANSEN Anne Mette	2/2	100							2/2						14:58
12	KRISTENSEN Anna Opstrup												1			25:36
16	REINHARDT Althea Rebecca															29:15
21	AAGOT HANSEN Andrea															13:57
23	JØRGENSEN Kristina	4/8	50	2/2			1/2	0/1		1/3						30:24
25	JENSEN ØSTERGAARD Trine	5/5	100		1/1	4/4										46:03
26	JØRGENSEN Stine Eiberg	1/1	100		1/1								1			34:24
32	HOJLUND Mie Enggrob	2/6	33		0/2		2/3			0/1						26:24
33	FRIIS Emma Cecilie Uhrskov															
34	IVERSEN Rikke	2/2	100		1/1							1/1				31:35
41	HALILCEVIC Elma	4/6	67			2/2		2/4								49:51
42	MOLLER Michala Elsberg	3/5	60	2/3			1/2							1		35:58
Totals		33/46	72	4/5	10/13	6/6	7/10	2/5		3/6	1/1			4		60:00

No.	Name	Total		Saves / Shots							
		S/S	%	7m	6m	Wing	BT	FB	FTO	9m	
12	KRISTENSEN Anna Opstrup	7/15	47	1/3	1/4	1/4	2/2	1/1		1/1	
16	REINHARDT Althea Rebecca	7/22	32	0/1	2/7	3/6	1/5	1/2		0/1	
EG		1									
Totals		14/38	37	1/4	3/11	4/10	3/7	2/3		1/2	

#### Attacks

Team	All		Player Majority		Player Minority		Position Attacks		FB		Ind. FB		Team FB		TO	TO %
	G/Att.	%	G/Att.	%	G/Att.	%	G/Att.	%	G/Att.	%	G/Att.	%	G/Att.	%		
FAR	24/57	42	5/9	56	1/2	50	22/52	42	1/4	25	1/4	25	10	18		
DEN	33/56	59	2/3	67	5/7	71	30/50	60	2/5	40	1/1	100	25	18		

#### Legend:

%	Efficiency	2M	2-Minute Suspensions	7m	7-metre Penalty Shots	9m	9-metre Shots
BT	Breakthroughs	EG	Empty Goal	FTO	Fast Throw off	G/Att.	Goals/Attacks
G/S	Goals/Shots	Ind.	Individual	RC	Red Cards (Direct and after Third 2-Minute Suspension)	YC	Yellow Cards
S/S	Saves/Shots	TO	Turnover	Wing	Wing Shots		

**Match Team Statistics**  
Match No: 23

Basel

**FAR 24 - 33 DEN**  
(8 - 15) (16 - 18)

Referees: ALTMAR Kristof (HUN) / HORVATH Marton (HUN)

**FAR - Faroe Islands**

Coach: MOGENSEN Claus Leth (DEN)

YC/RC Bench Officials:1/0 Time outs: 2

No.	Name	Total		All Goals / Shots								Punishments				Offence			Defence			TP	
		G/S	%	7m	7m%	6m	Wing	BT	FB	FTO	9m	EG	YC	RC	2M	2+2	AS	R7	TO/TF	ST	BS		P7
1	PETERSEN Annika Fridheim																						12:50
2	EGHOLM Elsa	0/3	0			0/2		0/1									1						16:12
4	PALSDOTTIR Brynhild	5/7	71			2/2	3/4		0/1														36:56
7	OSBERG JOHANSEN Bjarta																						12:18
8	OLSEN Rannvá	0/1	0				0/1																21:55
10	HANSEN Sina Krossteig	2/3	67					2/2		0/1							4	1				1	45:47
11	ARGE Lukka	0/1	0	0/1	0																		16:43
13	HOJ Brynja															1							6:57
17	ZACHARIASEN Liv Bentsdottir	0/1	0							0/1					1								6:53
18	BRANDENBORG Pernille	10/12	83	3/3	100	4/6			1/1		1/1	1/1						2 / 1					58:46
21	PALSDOTTIR NOLSOY Maria	1/4	25			1/3				0/1					1		5	1	1				26:45
22	FRANKSDOTTIR JOENSEN Bjork																						
23	SVEINBJORNSDOTTIR POULSEN Liv	2/5	40				2/5																23:18
33	SAMUELSEN Turid Arge	2/2	100			1/1	1/1												/ 1			1	38:36
77	MITTUN Jana	2/11	18			0/1	0/1	2/6	0/2		0/1						6	2	4			3	53:06
88	WARDUM Rakul S.																		1				36:36
Bench/Team																1							
Totals		24/50	48	3/4	75	8/15	6/12	4/9	1/4		1/5	1/1	1	1	2		16	4	8 / 2			5	

No.	Name	Total		All Saves / Shots										
		S/S	%	7m	7m%	6m	Wing	BT	FB	FTO	9m	9m%	NS	NS%
1	PETERSEN Annika Fridheim	2/13	15	0/2	0	1/5	0/2	1/3			0/1	0	2/10	20
88	WARDUM Rakul S.	7/27	26	1/3	33	1/7	0/4	0/5	2/3		3/5	60	1/16	6
EG		2												
Totals		9/42	21	1/5	20	2/12	0/6	1/8	2/4		3/6	50	3/26	12

**Attacks**

Team	All		Player Majority		Player Minority		Position Attacks		FB		Ind. FB		Team FB		TO	TO %
	G/Att.	%	G/Att.	%	G/Att.	%	G/Att.	%	G/Att.	%	G/Att.	%	G/Att.	%		
FAR	24/57	42	5/9	56	1/2	50	22/52	42	1/4	25			1/4	25	10	18

**Team Shots**

	Goals	Saves	Missed	Post	Blocked	Total	G/S %	Prop %
6m Shots	8	3	1	3		15	53	30
Wing Shots	6	4	2			12	50	24
L R	1 5	1 3	1 1			3 9	33 56	6 18
9m Shots	1	1	1	1	1	5	20	10
L C R	1	1	1	1	1	5	20	0 10 0
7m Penalty Throws	3	1				4	75	8
Fast Breaks	1	2	1			4	25	8
Breakthroughs	4	3	1	1		9	44	18
Fast Throw Offs								0
Empty Goals	1					1	100	2
Totals	24	14	6	5	1	50	48	100

Legend:			
%	Efficiency	2M	2-Minute Suspensions
9m	9-metre Shots	2+2	2+2 Minute Suspensions
EG	Empty Goal	AS	Assists
Ind.	Individual	BS	Blocked Shots
R7	Received 7-metre Fouls	FTO	Fast Throw off
ST	Steals	FB	Fast Breaks
		L	Left
		NS	Near Shots
		R	Right
		RC	Red Cards (Direct and after 3rd 2-Minute Suspension)
		TO/TF	Turnover/Technical Faults
		TP	Time Played
		6m	6-metre Shots
		BT	Breakthroughs
		G/Att.	Goals/Attacks
		P7	Penalty 7-metre Fouls
		7m	7-metre Penalty Shots
		C	Center
		G/S	Goals/Shots
		Prop %	Proportion of Shots
		S/S	Saves/Shots
		YC	Yellow Cards

Match Team Statistics  
Match No: 23

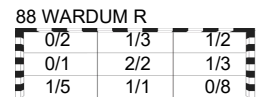
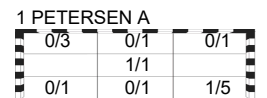
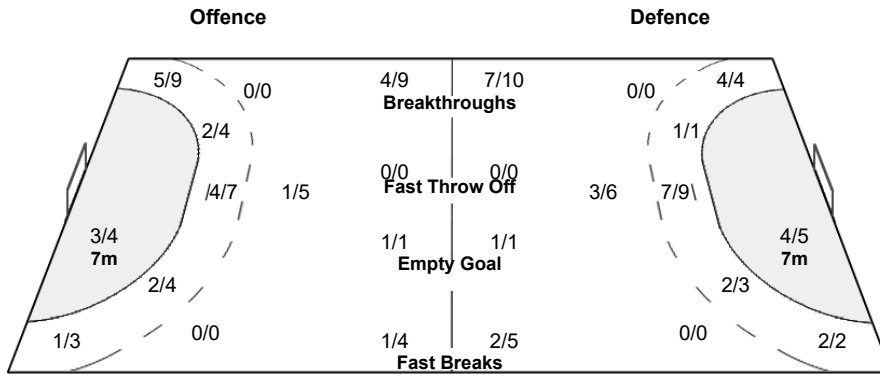
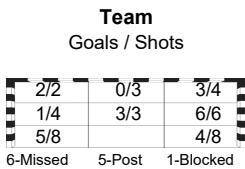
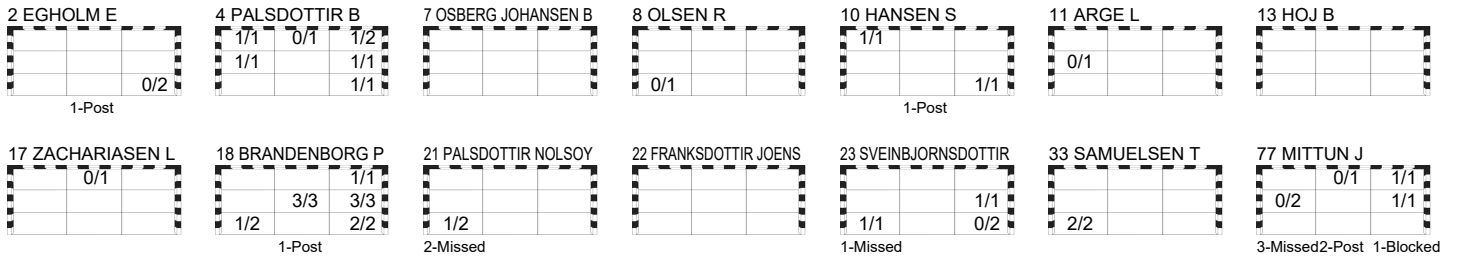
Basel

FAR 24 - 33 DEN  
(8 - 15) (16 - 18)

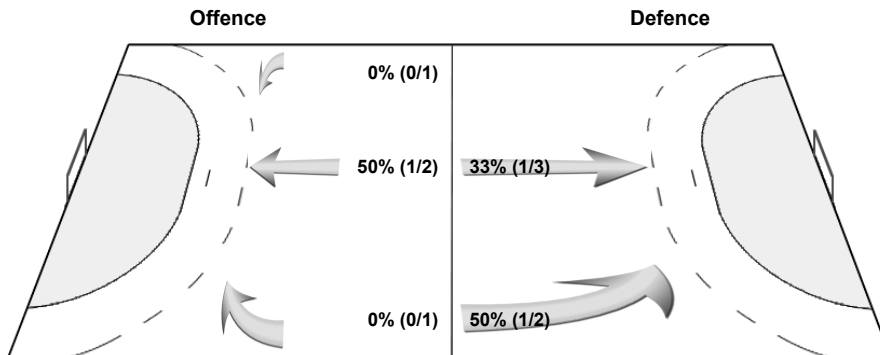
Referees: ALTMAR Kristof (HUN) / HORVATH Marton (HUN)

FAR - Faroe Islands

Overview of Shot Distribution



Shot Distribution Fast Breaks



**Match Team Statistics**  
Match No: 23

Basel

**FAR 24 - 33 DEN**  
(8 - 15) (16 - 18)

Referees: ALTMAR Kristof (HUN) / HORVATH Marton (HUN)

**DEN - Denmark**

Coach: JENSEN Jesper

Time outs: 3

No.	Name	Total		All Goals / Shots								Punishments				Offence			Defence			TP	
		G/S	%	7m	7m%	6m	Wing	BT	FB	FTO	9m	EG	YC	RC	2M	2+2	AS	R7	TO/TF	ST	BS		P7
3	NIELSEN Kaja Kamp	4/4	100			4/4																	24:37
4	HANSEN Helene Kindberg	4/4	100			1/1		3/3									6		1 / 1				22:05
5	IVERSEN Sarah	2/3	67			2/3												1				1	26:53
6	HAGESO Helena Elver															1							
8	HANSEN Anne Mette	2/2	100							2/2								4	2				14:58
12	KRISTENSEN Anna Opstrup															1							25:36
16	REINHARDT Althea Rebecca																		1				29:15
21	AAGOT HANSEN Andrea																						13:57
23	JÖRGENSEN Kristina	4/8	50	2/2	100			1/2	0/1		1/3						4		/ 2				30:24
25	JENSEN ØSTERGAARD Trine	5/5	100			1/1	4/4															1	46:03
26	JØRGENSEN Stine Eiberg	1/1	100			1/1									1								34:24
32	HOJLUND Mie Enggrob	2/6	33			0/2		2/3			0/1						4	3	/ 1				26:24
33	FRIIS Emma Cecilie Uhrskov																						
34	IVERSEN Rikke	2/2	100			1/1						1/1									1	1	31:35
41	HALILCEVIC Elma	4/6	67				2/2		2/4											2			49:51
42	MOLLER Michala Elsberg	3/5	60	2/3	67			1/2								1		2	1 / 1			1	35:58
Totals		33/46	72	4/5	80	10/13	6/6	7/10	2/5		3/6	1/1			4		20	5	4 / 6	2	1	4	

No.	Name	Total		All Saves / Shots										
		S/S	%	7m	7m%	6m	Wing	BT	FB	FTO	9m	9m%	NS	NS%
12	KRISTENSEN Anna Opstrup	7/15	47	1/3	33	1/4	1/4	2/2	1/1		1/1	100	4/10	40
16	REINHARDT Althea Rebecca	7/22	32	0/1	0	2/7	3/6	1/5	1/2		0/1	0	6/18	33
EG		1												
Totals		14/38	37	1/4	25	3/11	4/10	3/7	2/3		1/2	50	10/28	36

**Attacks**

Team	All		Player Majority		Player Minority		Position Attacks		FB		Ind. FB		Team FB		TO	TO %
	G/Att.	%	G/Att.	%	G/Att.	%	G/Att.	%	G/Att.	%	G/Att.	%	G/Att.	%		
DEN	33/56	59	2/3	67	5/7	71	30/50	60	2/5	40	1/1	100	1/4	25	10	18

**Team Shots**

	Goals	Saves	Missed	Post	Blocked	Total	G/S %	Prop %
6m Shots	10	2		1		13	77	28
Wing Shots	6					6	100	13
L R	2 4					2 4	100 100	4 9
9m Shots	3	3				6	50	13
L C R	3	3				6	50	0 13 0
7m Penalty Throws	4	1				5	80	11
Fast Breaks	2	2		1		5	40	11
Breakthroughs	7	1	2			10	70	22
Fast Throw Offs								0
Empty Goals	1					1	100	2
Totals	33	9	2	2		46	72	100

Legend:			
%	Efficiency	2M	2-Minute Suspensions
9m	9-metre Shots	2+2	2+2 Minute Suspensions
EG	Empty Goal	AS	Assists
Ind.	Individual	BS	Blocked Shots
R7	Received 7-metre Fouls	FB	Fast Breaks
ST	Steals	FTO	Fast Throw off
		NS	Near Shots
		P7	Penalty 7-metre Fouls
		RC	Red Cards (Direct and after 3rd 2-Minute Suspension)
		TO/TF	Turnover/Technical Faults
		TP	Time Played
		Wing	Wing Shots
		7m	7-metre Penalty Shots
		C	Center
		G/S	Goals/Shots
		Prop %	Proportion of Shots
		S/S	Saves/Shots
		YC	Yellow Cards

Match Team Statistics  
Match No: 23

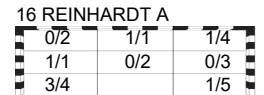
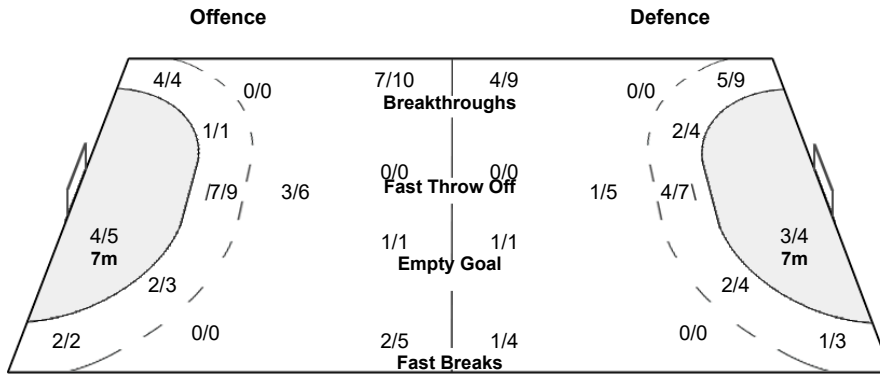
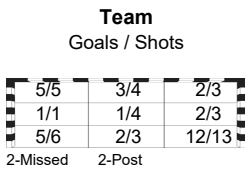
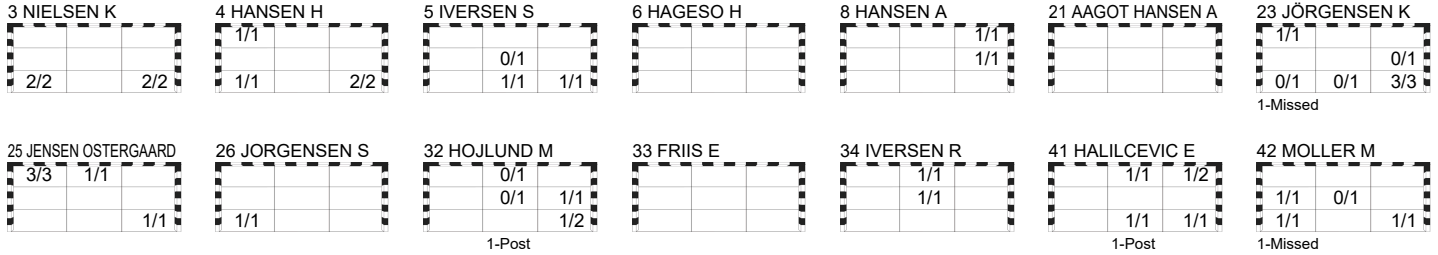
Basel

FAR 24 - 33 DEN  
(8 - 15) (16 - 18)

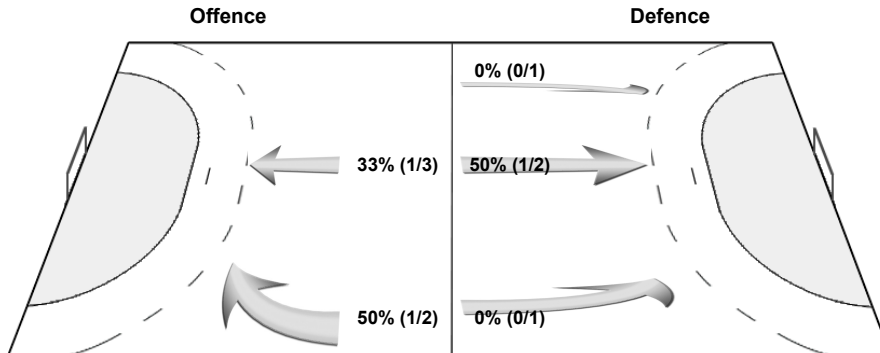
Referees: ALTMAR Kristof (HUN) / HORVATH Marton (HUN)

DEN - Denmark

Overview of Shot Distribution



Shot Distribution Fast Breaks



**Play by Play**  
**Match No: 23**

**Basel**

**FAR 24 - 33 DEN**  
**(8 - 15) (16 - 18)**

**Referees:** ALTMAR Kristof (HUN) / HORVATH Marton (HUN)

- |            |   |                                   |                                       |                                 |
|------------|---|-----------------------------------|---------------------------------------|---------------------------------|
| <b>FAR</b> | <b>1</b> PETERSEN Annika Fridheim       | <b>2</b> EGHOLM Elsa              | <b>4</b> PALSDOTTIR Brynhild          | <b>A</b> MOGENSEN Claus Leth    |
|            | <b>7</b> OSBERG JOHANSEN Bjarta         | <b>8</b> OLSEN Rannvá             | <b>10</b> HANSEN Sína Krossteig       | <b>B</b> OLSEN Simon            |
|            | <b>11</b> ARGE Lukka                    | <b>13</b> HOJ Brynja              | <b>17</b> ZACHARIASEN Liv Bentsdottir | <b>C</b> A SKIPAGOTU Jens       |
|            | <b>18</b> BRANDENBORG Pernille          | <b>21</b> PALSDOTTIR NOLSOY Maria | <b>22</b> FRANKSDOTTIR JOENSEN Bjork  | <b>D</b> LAURSEN Beinta Bendix  |
|            | <b>23</b> SVEINBJORNSDOTTIR POULSEN Liv | <b>33</b> SAMUELSEN Turid Arge    | <b>77</b> MITTUN Jana                 |                                 |
|            | <b>88</b> WARDUM Rakul S.               |                                   |                                       |                                 |
| <b>DEN</b> | <b>3</b> NIELSEN Kaja Kamp              | <b>4</b> HANSEN Helene Kindberg   | <b>5</b> IVERSEN Sarah                | <b>A</b> JENSEN Jesper          |
|            | <b>6</b> HAGESO Helena Elver            | <b>8</b> HANSEN Anne Mette        | <b>12</b> KRISTENSEN Anna Opstrup     | <b>B</b> JORGENSEN Lars Troels  |
|            | <b>16</b> REINHARDT Althea Rebecca      | <b>21</b> AAGOT HANSEN Andrea     | <b>23</b> JÖRGENSEN Kristina          | <b>C</b> HAUNSTRUP Tina Bottzau |
|            | <b>25</b> JENSEN OSTERGAARD Trine       | <b>26</b> JORGENSEN Stine Eiberg  | <b>32</b> HOJLUND Mie Enggrob         | <b>D</b> HJULER Mikkel          |
|            | <b>33</b> FRIIS Emma Cecilie Uhrskov    | <b>34</b> IVERSEN Rikke           | <b>41</b> HALILCEVIC Elma             |                                 |
|            | <b>42</b> MOLLER Michala Elsberg        |                                   |                                       |                                 |

**1st HALF**

Match Time	FAR - Faroe Islands	Score	Lead	DEN - Denmark
0:00	88 WARDUM R Goalkeeper			12 KRISTENSEN A Goalkeeper
0:33	33 SAMUELSEN T Goal left wing bottom left (77 MITTUN J), 73.63 km/h	<b>1 - 0</b>	<b>+1</b>	
1:08				42 MOLLER M Turnover
1:41	77 MITTUN J Shot breakthrough missed			
2:06				23 JÖRGENSEN K Shot centre 9m saved middle right
2:16	77 MITTUN J Turnover			
2:56		<b>1 - 1</b>	<b>0</b>	
3:46	21 PALSDOTTIR NOLSOY Goal left 6m bottom left	<b>2 - 1</b>	<b>+1</b>	25 JENSEN OSTERGAARD Goal right wing bottom right (42 MOLLER M), 86.44 km/h
4:26				32 HOJLUND M Shot centre 9m saved middle centre
4:40	23 SVEINBJORNSDOTTIR Goal right wing bottom left (10 HANSEN S), 77.70 km/h	<b>3 - 1</b>	<b>+2</b>	
5:11		<b>3 - 2</b>	<b>+1</b>	23 JÖRGENSEN K Goal centre 9m top left, 92.79 km/h
5:23	77 MITTUN J 7m received			42 MOLLER M 7m caused
5:35	11 ARGE L Penalty shot saved middle left			
6:09	77 MITTUN J 7m caused			
6:23		<b>3 - 3</b>	<b>0</b>	32 HOJLUND M 7m received
7:08	77 MITTUN J Turnover			42 MOLLER M Goal Penalty shot middle left (32 HOJLUND M), 92.78 km/h
7:20				41 HALILCEVIC E Steal
7:24				41 HALILCEVIC E Shot fast break post
7:38	23 SVEINBJORNSDOTTIR Shot right wing missed			26 JORGENSEN S 2-minutes suspension
7:52				23 JÖRGENSEN K for 12 KRISTENSEN A Empty goal
8:13		<b>3 - 4</b>	<b>-1</b>	34 IVERSEN R Goal centre 6m top centre (32 HOJLUND M), 81.59 km/h
8:14				12 KRISTENSEN A for 41 HALILCEVIC E Goalkeeper back
8:41	23 SVEINBJORNSDOTTIR Goal right wing middle right (21 PALSDOTTIR NOLSOY), 63.31 km/h	<b>4 - 4</b>	<b>0</b>	
8:55				23 JÖRGENSEN K for 12 KRISTENSEN A Empty goal
9:18		<b>4 - 5</b>	<b>-1</b>	32 HOJLUND M Goal breakthrough bottom right, 80.41 km/h
9:22				12 KRISTENSEN A for 42 MOLLER M Goalkeeper back
10:20	77 MITTUN J Shot right 6m post			
10:53				42 MOLLER M Technical Fault
11:30	23 SVEINBJORNSDOTTIR Shot right wing saved bottom right			
11:36	13 HOJ B Disqualification (red card-direct)			
11:36				3 NIELSEN K for 12 KRISTENSEN A Empty goal
11:55	10 HANSEN S 7m caused			8 HANSEN A 7m received
11:55	1 PETERSEN A for 88 WARDUM R Goalkeeper Substitution			
12:00		<b>4 - 6</b>	<b>-2</b>	42 MOLLER M Goal Penalty shot bottom left (8 HANSEN A), 96.03 km/h
12:28				12 KRISTENSEN A for 23 JÖRGENSEN K Goalkeeper back
12:58	88 WARDUM R for 1 PETERSEN A Goalkeeper Substitution			
13:14	21 PALSDOTTIR NOLSOY Shot centre 9m missed			
13:27				23 JÖRGENSEN K Shot breakthrough missed
13:45	Team timeout			
13:58	7 OSBERG JOHANSEN B for 1 PETERSEN A Empty goal			
14:03	88 WARDUM R for 10 HANSEN S Goalkeeper back			

**FAR 24 - 33 DEN**  
(8 - 15) (16 - 18)

**1st HALF**

Match Time	FAR - Faroe Islands	Score	Lead	DEN - Denmark
14:09	10 HANSEN S for 88 WARDUM R Empty goal			
14:14	88 WARDUM R for 23 SVEINBJORNSDOTTIR Goalkeeper back			
14:24	77 MITTUN J Shot centre 9m blocked			34 IVERSEN R Block
14:44	17 ZACHARIASEN L Shot centre 9m saved top centre			
15:10		4 - 7	-3	32 HOJLUND M Goal breakthrough middle right, 88.43 km/h
15:16	7 OSBERG JOHANSEN B for 88 WARDUM R Empty goal			
15:51	21 PALSDOTTIR NOLSOY 7m received			25 JENSEN OSTERGAARD 7m caused
16:00	88 WARDUM R for 10 HANSEN S Goalkeeper back			
16:02	18 BRANDENBORG P Goal Penalty shot middle right (21 PALSDOTTIR NOLSOY), 85.80 km/h	5 - 7	-2	
16:46	77 MITTUN J 7m caused			32 HOJLUND M 7m received
17:02				42 MOLLER M Penalty shot saved middle centre
17:15	7 OSBERG JOHANSEN B for 88 WARDUM R Empty goal			
17:53	21 PALSDOTTIR NOLSOY Shot left 6m missed			
17:54	88 WARDUM R for 2 EGHOLM E Goalkeeper back			
18:22	77 MITTUN J 7m caused			8 HANSEN A 7m received
18:37		5 - 8	-3	23 JÖRGENSEN K Goal Penalty shot bottom right (8 HANSEN A), 88.57 km/h
19:19	77 MITTUN J 7m received			5 IVERSEN S 7m caused
19:19				5 IVERSEN S 2-minutes suspension
19:19	18 BRANDENBORG P Goal Penalty shot middle right (77 MITTUN J), 85.97 km/h	6 - 8	-2	
19:34				23 JÖRGENSEN K for 12 KRISTENSEN A Empty goal
19:48				23 JÖRGENSEN K Technical Fault
19:53				12 KRISTENSEN A for 23 JÖRGENSEN K Goalkeeper back
19:56	77 MITTUN J Shot fast break missed			
20:06				23 JÖRGENSEN K for 12 KRISTENSEN A Empty goal
20:27				4 HANSEN H Turnover
20:30				12 KRISTENSEN A for 23 JÖRGENSEN K Goalkeeper back
20:30				12 KRISTENSEN A 2-minutes suspension
20:31				16 REINHARDT A for 3 NIELSEN K Goalkeeper back
20:41	23 SVEINBJORNSDOTTIR Shot right wing saved bottom right			
20:52				23 JÖRGENSEN K for 16 REINHARDT A Empty goal
21:35		6 - 9	-3	25 JENSEN OSTERGAARD Goal right wing top left (4 HANSEN H), 78.03 km/h
21:55				16 REINHARDT A for 41 HALILCEVIC E Goalkeeper back
21:57	77 MITTUN J Shot left wing missed			
22:23				41 HALILCEVIC E for 16 REINHARDT A Empty goal
22:44		6 - 10	-4	8 HANSEN A Goal centre 9m middle right, 92.20 km/h
23:00	7 OSBERG JOHANSEN B for 88 WARDUM R Empty goal			
23:04				12 KRISTENSEN A for 26 JÖRGENSEN S Goalkeeper back
23:15	2 EGHOLM E Shot right 6m post			
23:20	1 PETERSEN A for 21 PALSDOTTIR NOLSOY Goalkeeper back			
23:20				Team timeout
23:53	17 ZACHARIASEN L 2-minutes suspension			
23:59		6 - 11	-5	5 IVERSEN S Goal centre 6m bottom centre (8 HANSEN A), 76.73 km/h
24:17	21 PALSDOTTIR NOLSOY for 1 PETERSEN A Empty goal			
24:40	18 BRANDENBORG P Technical Fault			
24:45	1 PETERSEN A for 2 EGHOLM E Goalkeeper back			
24:50				5 IVERSEN S Shot centre 6m saved middle centre
25:03	2 EGHOLM E for 1 PETERSEN A Empty goal			
25:25	33 SAMUELSEN T Goal left 6m bottom left (77 MITTUN J)	7 - 11	-4	
25:27	1 PETERSEN A for 2 EGHOLM E Goalkeeper back			
25:44				23 JÖRGENSEN K for 12 KRISTENSEN A Empty goal
25:58				12 KRISTENSEN A for 23 JÖRGENSEN K Goalkeeper back
26:09	B OLSEN S Warning (yellow card) bench punishment			
26:09		7 - 12	-5	4 HANSEN H Goal right 6m bottom right (8 HANSEN A)
26:25	77 MITTUN J Shot breakthrough saved middle left			
26:53		7 - 13	-6	8 HANSEN A Goal centre 9m top right (4 HANSEN H), 95.66 km/h



**FAR 24 - 33 DEN**  
 (8 - 15) (16 - 18)

**1st HALF**

Match Time	FAR - Faroe Islands	Score	Lead	DEN - Denmark
27:26	2 EGHOLM E Shot centre 6m saved bottom right			
27:38		7 - 14	-7	41 HALILCEVIC E Goal left wing top centre (23 JØRGENSEN K), 28.83 km/h
28:14	10 HANSEN S Shot centre 9m post			
28:37		7 - 15	-8	25 JENSEN OSTERGAARD Goal centre 6m top left (23 JØRGENSEN K), 85.95 km/h
29:05	2 EGHOLM E Shot breakthrough saved bottom right			
29:35	4 PALSDOTTIR B Goal right 6m middle left (2 EGHOLM E)	8 - 15	-7	
29:54				5 IVERSEN S Turnover
30:00	77 MITTUN J Shot fast break saved top centre			

**2nd HALF**

Match Time	FAR - Faroe Islands	Score	Lead	DEN - Denmark
30:00	1 PETERSEN A Goalkeeper			16 REINHARDT A Goalkeeper
30:00	18 BRANDENBORG P Goal fast break middle centre	9 - 15	-6	
30:25		9 - 16	-7	3 NIELSEN K Goal centre 6m bottom right (4 HANSEN H), 78.41 km/h
31:17	21 PALSDOTTIR NOLSOY Shot left 6m saved bottom left			
31:53		9 - 17	-8	42 MOLLER M Goal breakthrough bottom right, 62.50 km/h
32:27	88 WARDUM R for 1 PETERSEN A Goalkeeper Substitution			
32:31	18 BRANDENBORG P Shot centre 6m saved bottom left			
33:12		9 - 18	-9	41 HALILCEVIC E Goal left wing top right (32 HOJLUND M), 80.59 km/h
33:57	77 MITTUN J Shot breakthrough post			
34:25				32 HOJLUND M Technical Fault
34:56	77 MITTUN J Shot breakthrough saved middle left			
35:22	18 BRANDENBORG P Turnover			
35:29				16 REINHARDT A Turnover
35:44	7 OSBERG JOHANSEN B for 88 WARDUM R Empty goal			
35:50	21 PALSDOTTIR NOLSOY Turnover			
35:55	1 PETERSEN A for 77 MITTUN J Goalkeeper back			
36:41	33 SAMUELSEN T Technical Fault			
37:07				32 HOJLUND M Shot breakthrough saved bottom right
37:16				32 HOJLUND M 7m received
37:29		9 - 19	-10	23 JØRGENSEN K Goal Penalty shot bottom right (32 HOJLUND M), 81.55 km/h
38:01	7 OSBERG JOHANSEN B for 1 PETERSEN A Empty goal			
38:02	77 MITTUN J Turnover			41 HALILCEVIC E Steal
38:07	1 PETERSEN A for 8 OLSEN R Goalkeeper back			
38:11	8 OLSEN R for 1 PETERSEN A Empty goal			
38:14		9 - 20	-11	41 HALILCEVIC E Goal individual fast break bottom centre, 75.89 km/h
38:15	Team timeout			
38:33	77 MITTUN J Goal breakthrough top right, 87.82 km/h	10 - 20	-10	
39:00	1 PETERSEN A for 21 PALSDOTTIR NOLSOY Goalkeeper back			
39:20		10 - 21	-11	4 HANSEN H Goal breakthrough top left, 73.02 km/h
39:37	7 OSBERG JOHANSEN B for 1 PETERSEN A Empty goal			
39:51	4 PALSDOTTIR B Goal right wing middle right (77 MITTUN J), 72.53 km/h	11 - 21	-10	
39:53	1 PETERSEN A for 21 PALSDOTTIR NOLSOY Goalkeeper back			
40:05		11 - 22	-11	25 JENSEN OSTERGAARD Goal right wing top left (4 HANSEN H), 75.39 km/h
40:23	77 MITTUN J Goal breakthrough middle right, 80.73 km/h	12 - 22	-10	
40:38	88 WARDUM R for 1 PETERSEN A Goalkeeper Substitution			
40:44				32 HOJLUND M for 16 REINHARDT A Empty goal
40:48				16 REINHARDT A for 34 IVERSEN R Goalkeeper back
41:05		12 - 23	-11	25 JENSEN OSTERGAARD Goal right wing top centre (4 HANSEN H), 73.76 km/h
41:35	77 MITTUN J Turnover			
41:36	7 OSBERG JOHANSEN B for 88 WARDUM R Empty goal			
41:41		12 - 24	-12	34 IVERSEN R Goal empty goal middle centre, 90.52 km/h
42:17	4 PALSDOTTIR B Shot right wing saved top right			

**FAR 24 - 33 DEN**  
 (8 - 15) (16 - 18)

**2nd HALF**

Match Time	FAR - Faroe Islands	Score	Lead	DEN - Denmark
42:56	88 WARDUM R for 21 PALSDOTTIR NOLSOY Goalkeeper back			
42:56				32 HOJLUND M Shot left 6m post
43:26	7 OSBERG JOHANSEN B for 88 WARDUM R Empty goal			
43:48	10 HANSEN S 7m received			34 IVERSEN R 7m caused
44:00	18 BRANDENBORG P Goal Penalty shot bottom right (10 HANSEN S), 73.17 km/h	<b>13 - 24</b>	<b>-11</b>	
44:02	88 WARDUM R for 7 OSBERG JOHANSEN B Goalkeeper back			
44:34				42 MOLLER M Shot breakthrough missed
44:44	18 BRANDENBORG P Goal centre 6m middle right (77 MITTUN J), 73.80 km/h	<b>14 - 24</b>	<b>-10</b>	
45:08				Team timeout
45:22		<b>14 - 25</b>	<b>-11</b>	3 NIELSEN K Goal centre 6m bottom left (4 HANSEN H)
46:00	18 BRANDENBORG P Turnover			
46:03	21 PALSDOTTIR NOLSOY for 88 WARDUM R Empty goal			
46:03	88 WARDUM R for 7 OSBERG JOHANSEN B Goalkeeper back			
46:20				32 HOJLUND M Shot centre 6m saved top centre
46:30	4 PALSDOTTIR B Shot fast break saved top centre			
46:37		<b>14 - 26</b>	<b>-12</b>	41 HALILCEVIC E Goal fast break bottom right, 83.58 km/h
46:45	7 OSBERG JOHANSEN B for 88 WARDUM R Empty goal			
47:17	10 HANSEN S Goal breakthrough bottom right, 83.52 km/h	<b>15 - 26</b>	<b>-11</b>	
47:20	88 WARDUM R for 77 MITTUN J Goalkeeper back			
47:27				23 JÖRGENSEN K Shot fast break saved bottom centre
47:46	21 PALSDOTTIR NOLSOY for 88 WARDUM R Empty goal			
48:11	4 PALSDOTTIR B Goal right 6m bottom right (21 PALSDOTTIR NOLSOY)	<b>16 - 26</b>	<b>-10</b>	
48:24	88 WARDUM R for 21 PALSDOTTIR NOLSOY Goalkeeper back			
49:04		<b>16 - 27</b>	<b>-11</b>	4 HANSEN H Goal breakthrough bottom right, 67.12 km/h
49:32	10 HANSEN S Goal breakthrough top left	<b>17 - 27</b>	<b>-10</b>	
49:42				41 HALILCEVIC E Shot fast break saved top right
49:54	7 OSBERG JOHANSEN B for 88 WARDUM R Empty goal			
50:03	18 BRANDENBORG P Goal centre 6m bottom left (10 HANSEN S), 69.95 km/h	<b>18 - 27</b>	<b>-9</b>	
50:04				Team timeout
50:04	88 WARDUM R for 21 PALSDOTTIR NOLSOY Goalkeeper back			
50:31		<b>18 - 28</b>	<b>-10</b>	3 NIELSEN K Goal left 6m bottom left (23 JÖRGENSEN K)
50:48	7 OSBERG JOHANSEN B for 88 WARDUM R Empty goal			
51:03	4 PALSDOTTIR B Goal right wing top right (21 PALSDOTTIR NOLSOY), 69.50 km/h	<b>19 - 28</b>	<b>-9</b>	
51:16	88 WARDUM R for 21 PALSDOTTIR NOLSOY Goalkeeper back			
51:41				23 JÖRGENSEN K Shot centre 9m saved bottom left
51:49	88 WARDUM R Turnover			
51:57		<b>19 - 29</b>	<b>-10</b>	3 NIELSEN K Goal left 6m bottom right
52:07	7 OSBERG JOHANSEN B for 88 WARDUM R Empty goal			
52:28	88 WARDUM R for 7 OSBERG JOHANSEN B Goalkeeper back			
52:28	18 BRANDENBORG P Shot centre 6m post			
52:35				3 NIELSEN K Technical Fault
52:47	7 OSBERG JOHANSEN B for 88 WARDUM R Empty goal			
53:32	8 OLSEN R Shot left wing saved bottom left			
53:44	88 WARDUM R for 7 OSBERG JOHANSEN B Goalkeeper back			
54:00				4 HANSEN H Technical Fault
54:22	7 OSBERG JOHANSEN B for 88 WARDUM R Empty goal			
54:44				42 MOLLER M 2-minutes suspension
54:59	4 PALSDOTTIR B Goal right wing top left (77 MITTUN J)	<b>20 - 29</b>	<b>-9</b>	
55:14	88 WARDUM R for 77 MITTUN J Goalkeeper back			
55:31		<b>20 - 30</b>	<b>-10</b>	23 JÖRGENSEN K Goal breakthrough bottom right, 77.25 km/h
55:39				4 HANSEN H for 16 REINHARDT A Empty goal
55:39	18 BRANDENBORG P Goal empty goal middle centre	<b>21 - 30</b>	<b>-9</b>	
56:11				16 REINHARDT A for 32 HOJLUND M Goalkeeper back
56:11		<b>21 - 31</b>	<b>-10</b>	4 HANSEN H Goal breakthrough bottom left
56:26				32 HOJLUND M for 16 REINHARDT A Empty goal

FAR 24 - 33 DEN  
(8 - 15) (16 - 18)

2nd HALF

Match Time	FAR - Faroe Islands	Score	Lead	DEN - Denmark
56:30				16 REINHARDT A for 42 MOLLER M Goalkeeper back
56:31	18 BRANDENBORG P Goal centre 9m middle centre	22 - 31	-9	
57:02				23 JØRGENSEN K Technical Fault
57:27	77 MITTUN J for 88 WARDUM R Empty goal			
57:32	18 BRANDENBORG P Goal centre 6m top right (10 HANSEN S)	23 - 31	-8	
57:38	88 WARDUM R for 77 MITTUN J Goalkeeper back			
58:28		23 - 32	-9	5 IVERSEN S Goal centre 6m bottom right (23 JØRGENSEN K), 78.54 km/h
58:37	7 OSBERG JOHANSEN B for 88 WARDUM R Empty goal			
59:01	18 BRANDENBORG P Goal centre 6m bottom right (21 PALSDOTTIR NOLSOY)	24 - 32	-8	
59:06	88 WARDUM R for 77 MITTUN J Goalkeeper back			
59:28	21 PALSDOTTIR NOLSOY 2-minutes suspension			
59:28				26 JØRGENSEN S for 16 REINHARDT A Empty goal
59:52		24 - 33	-9	26 JØRGENSEN S Goal centre 6m bottom left (42 MOLLER M)
59:54				16 REINHARDT A for 4 HANSEN H Goalkeeper back

## Empty Goal Analysis

Basel

Match No: 23

**FAR 24 - 33 DEN**

(8 - 15) (16 - 18)

Referees: ALTMAR Kristof (HUN) / HORVATH Marton (HUN)

### ATTACKS DURING OWN EMPTY GOAL SITUATION

Players on Court	Attacks		Goals		Saves		Missed		Blocked		Post		Turnovers		Scoring Efficiency		Goals Against	
	FAR	DEN	FAR	DEN	FAR	DEN	FAR	DEN	FAR	DEN	FAR	DEN	FAR	DEN	FAR	DEN	FAR	DEN
7 Against 6	17	2	10	2	2		1				2		2		59	100	1	
6 Against 6	2	6	1	4									1	2	50	67		1
Others	1	3	1	2		1									100	67		
<b>Total:</b>	<b>20</b>	<b>11</b>	<b>12</b>	<b>8</b>	<b>2</b>	<b>1</b>	<b>1</b>				<b>2</b>		<b>3</b>	<b>2</b>	<b>60</b>	<b>73</b>	<b>1</b>	<b>1</b>

### GOALS/ATTACKS DURING OWN EMPTY GOAL SITUATION - ANALYSIS OF OCCURRENCE (in 5 min intervals)

Players on Court	1st Half											
	0-5		5-10		10-15		15-20		20-25		25-30	
	FAR	DEN	FAR	DEN	FAR	DEN	FAR	DEN	FAR	DEN	FAR	DEN
7 Against 6						1/1	1/2		0/1	1/1		
6 Against 6				2/2				0/1	0/1	1/2	1/1	
Others										1/2		
<b>Total:</b>				<b>2/2</b>		<b>1/1</b>	<b>1/2</b>	<b>0/1</b>	<b>0/2</b>	<b>3/5</b>	<b>1/1</b>	

Players on Court	2nd Half											
	30-35		35-40		40-45		45-50		50-55		55-60	
	FAR	DEN	FAR	DEN	FAR	DEN	FAR	DEN	FAR	DEN	FAR	DEN
7 Against 6			2/4		1/2		2/2		2/4		2/2	
6 Against 6												1/1
Others								1/1				1/1
<b>Total:</b>			<b>2/4</b>		<b>1/2</b>		<b>2/2</b>		<b>3/5</b>		<b>2/2</b>	<b>2/2</b>

### GOALS/ATTACKS DURING OWN EMPTY GOAL SITUATION - ANALYSIS BY DURATION

Team	<15 sec.	15-30 sec.	30-45 sec.	45-60 sec.	>60 sec.
FAR	3/5	5/8	3/5	1/2	
DEN	0/2	5/6	3/3		

### SUBSTITUTION SUMMARY

Players	FAR	DEN
Goalkeeper <-> Goalkeeper	4	0
Court Player <-> Goalkeeper	46	25
Court Player <-> Court Player	89	114
<b>Total:</b>	<b>139</b>	<b>139</b>

## Line-Up Analysis

Match No: 23

Basel

Attendance: 3.074

## FAR 24 - 33 DEN

### FAR - Faroe Islands

Lineup efficiency								Time Played	GF	GA
10 HANSEN S	13 HOJ B	18 BRANDENBORG P	23 SVEINBJORNSDOTTIR	33 SAMUELSEN T	77 MITTUN J	88 WARDUM R	6:25	0	5	
4 PALSDOTTIR B	8 OLSEN R	10 HANSEN S	11 ARGE L	18 BRANDENBORG P	77 MITTUN J	88 WARDUM R	5:45	1	5	
4 PALSDOTTIR B	7 OSBERG JOHANSEN B	8 OLSEN R	10 HANSEN S	18 BRANDENBORG P	21 PALSDOTTIR NOLSOY	77 MITTUN J	5:05	7	0	
10 HANSEN S	18 BRANDENBORG P	21 PALSDOTTIR NOLSOY	23 SVEINBJORNSDOTTIR	33 SAMUELSEN T	77 MITTUN J	88 WARDUM R	4:09	3	0	
4 PALSDOTTIR B	8 OLSEN R	10 HANSEN S	11 ARGE L	18 BRANDENBORG P	21 PALSDOTTIR NOLSOY	88 WARDUM R	4:02	2	4	
1 PETERSEN A	2 EGHOLM E	4 PALSDOTTIR B	10 HANSEN S	18 BRANDENBORG P	33 SAMUELSEN T	77 MITTUN J	3:07	2	3	
1 PETERSEN A	2 EGHOLM E	4 PALSDOTTIR B	17 ZACHARIASEN L	18 BRANDENBORG P	33 SAMUELSEN T	77 MITTUN J	2:55	0	3	
2 EGHOLM E	17 ZACHARIASEN L	18 BRANDENBORG P	23 SVEINBJORNSDOTTIR	33 SAMUELSEN T	77 MITTUN J	88 WARDUM R	2:53	1	1	
2 EGHOLM E	18 BRANDENBORG P	21 PALSDOTTIR NOLSOY	23 SVEINBJORNSDOTTIR	33 SAMUELSEN T	77 MITTUN J	88 WARDUM R	1:51	0	1	
4 PALSDOTTIR B	10 HANSEN S	18 BRANDENBORG P	21 PALSDOTTIR NOLSOY	33 SAMUELSEN T	77 MITTUN J	88 WARDUM R	1:51	0	0	
17 ZACHARIASEN L	18 BRANDENBORG P	21 PALSDOTTIR NOLSOY	23 SVEINBJORNSDOTTIR	33 SAMUELSEN T	77 MITTUN J	88 WARDUM R	1:33	1	1	
4 PALSDOTTIR B	7 OSBERG JOHANSEN B	8 OLSEN R	10 HANSEN S	11 ARGE L	18 BRANDENBORG P	77 MITTUN J	1:26	1	1	
1 PETERSEN A	2 EGHOLM E	4 PALSDOTTIR B	10 HANSEN S	11 ARGE L	18 BRANDENBORG P	33 SAMUELSEN T	1:25	0	1	
1 PETERSEN A	4 PALSDOTTIR B	10 HANSEN S	18 BRANDENBORG P	21 PALSDOTTIR NOLSOY	33 SAMUELSEN T	77 MITTUN J	1:23	0	0	
1 PETERSEN A	4 PALSDOTTIR B	8 OLSEN R	10 HANSEN S	11 ARGE L	18 BRANDENBORG P	77 MITTUN J	1:20	1	2	
4 PALSDOTTIR B	7 OSBERG JOHANSEN B	8 OLSEN R	10 HANSEN S	18 BRANDENBORG P	77 MITTUN J	88 WARDUM R	1:13	1	1	
1 PETERSEN A	10 HANSEN S	13 HOJ B	18 BRANDENBORG P	23 SVEINBJORNSDOTTIR	33 SAMUELSEN T	77 MITTUN J	1:03	0	1	
10 HANSEN S	13 HOJ B	18 BRANDENBORG P	21 PALSDOTTIR NOLSOY	33 SAMUELSEN T	77 MITTUN J	88 WARDUM R	1:00	0	0	
7 OSBERG JOHANSEN B	18 BRANDENBORG P	21 PALSDOTTIR NOLSOY	23 SVEINBJORNSDOTTIR	33 SAMUELSEN T	77 MITTUN J	88 WARDUM R	0:52	1	0	
2 EGHOLM E	4 PALSDOTTIR B	17 ZACHARIASEN L	18 BRANDENBORG P	21 PALSDOTTIR NOLSOY	33 SAMUELSEN T	77 MITTUN J	0:52	1	0	
13 HOJ B	18 BRANDENBORG P	21 PALSDOTTIR NOLSOY	23 SVEINBJORNSDOTTIR	33 SAMUELSEN T	77 MITTUN J	88 WARDUM R	0:51	0	0	
7 OSBERG JOHANSEN B	10 HANSEN S	18 BRANDENBORG P	21 PALSDOTTIR NOLSOY	23 SVEINBJORNSDOTTIR	33 SAMUELSEN T	77 MITTUN J	0:49	0	0	
2 EGHOLM E	7 OSBERG JOHANSEN B	18 BRANDENBORG P	21 PALSDOTTIR NOLSOY	23 SVEINBJORNSDOTTIR	33 SAMUELSEN T	77 MITTUN J	0:43	0	0	
2 EGHOLM E	4 PALSDOTTIR B	18 BRANDENBORG P	21 PALSDOTTIR NOLSOY	33 SAMUELSEN T	77 MITTUN J	88 WARDUM R	0:43	0	1	
4 PALSDOTTIR B	8 OLSEN R	10 HANSEN S	11 ARGE L	23 SVEINBJORNSDOTTIR	77 MITTUN J	88 WARDUM R	0:35	0	0	
1 PETERSEN A	4 PALSDOTTIR B	10 HANSEN S	11 ARGE L	18 BRANDENBORG P	33 SAMUELSEN T	77 MITTUN J	0:31	0	0	
4 PALSDOTTIR B	7 OSBERG JOHANSEN B	8 OLSEN R	10 HANSEN S	18 BRANDENBORG P	33 SAMUELSEN T	77 MITTUN J	0:31	1	1	
1 PETERSEN A	2 EGHOLM E	4 PALSDOTTIR B	18 BRANDENBORG P	21 PALSDOTTIR NOLSOY	33 SAMUELSEN T	77 MITTUN J	0:29	0	1	
4 PALSDOTTIR B	7 OSBERG JOHANSEN B	8 OLSEN R	10 HANSEN S	11 ARGE L	23 SVEINBJORNSDOTTIR	77 MITTUN J	0:25	0	0	
2 EGHOLM E	4 PALSDOTTIR B	10 HANSEN S	11 ARGE L	18 BRANDENBORG P	33 SAMUELSEN T	88 WARDUM R	0:24	0	0	
4 PALSDOTTIR B	8 OLSEN R	10 HANSEN S	18 BRANDENBORG P	21 PALSDOTTIR NOLSOY	77 MITTUN J	88 WARDUM R	0:24	0	0	
4 PALSDOTTIR B	7 OSBERG JOHANSEN B	8 OLSEN R	10 HANSEN S	11 ARGE L	18 BRANDENBORG P	88 WARDUM R	0:23	0	0	
7 OSBERG JOHANSEN B	10 HANSEN S	18 BRANDENBORG P	21 PALSDOTTIR NOLSOY	33 SAMUELSEN T	77 MITTUN J	88 WARDUM R	0:21	0	0	
1 PETERSEN A	4 PALSDOTTIR B	17 ZACHARIASEN L	18 BRANDENBORG P	21 PALSDOTTIR NOLSOY	33 SAMUELSEN T	77 MITTUN J	0:21	0	0	
10 HANSEN S	17 ZACHARIASEN L	18 BRANDENBORG P	23 SVEINBJORNSDOTTIR	33 SAMUELSEN T	77 MITTUN J	88 WARDUM R	0:19	0	1	
2 EGHOLM E	4 PALSDOTTIR B	8 OLSEN R	10 HANSEN S	18 BRANDENBORG P	21 PALSDOTTIR NOLSOY	88 WARDUM R	0:17	0	0	
2 EGHOLM E	4 PALSDOTTIR B	7 OSBERG JOHANSEN B	18 BRANDENBORG P	21 PALSDOTTIR NOLSOY	33 SAMUELSEN T	77 MITTUN J	0:16	0	0	
4 PALSDOTTIR B	10 HANSEN S	11 ARGE L	18 BRANDENBORG P	33 SAMUELSEN T	77 MITTUN J	88 WARDUM R	0:12	0	0	
4 PALSDOTTIR B	7 OSBERG JOHANSEN B	10 HANSEN S	18 BRANDENBORG P	21 PALSDOTTIR NOLSOY	33 SAMUELSEN T	77 MITTUN J	0:11	0	0	
4 PALSDOTTIR B	7 OSBERG JOHANSEN B	8 OLSEN R	10 HANSEN S	21 PALSDOTTIR NOLSOY	23 SVEINBJORNSDOTTIR	77 MITTUN J	0:11	0	0	
10 HANSEN S	11 ARGE L	18 BRANDENBORG P	23 SVEINBJORNSDOTTIR	33 SAMUELSEN T	77 MITTUN J	88 WARDUM R	0:10	0	0	
2 EGHOLM E	4 PALSDOTTIR B	7 OSBERG JOHANSEN B	8 OLSEN R	10 HANSEN S	18 BRANDENBORG P	21 PALSDOTTIR NOLSOY	0:10	1	0	
2 EGHOLM E	4 PALSDOTTIR B	10 HANSEN S	18 BRANDENBORG P	33 SAMUELSEN T	77 MITTUN J	88 WARDUM R	0:07	0	0	
1 PETERSEN A	4 PALSDOTTIR B	7 OSBERG JOHANSEN B	10 HANSEN S	18 BRANDENBORG P	21 PALSDOTTIR NOLSOY	33 SAMUELSEN T	0:05	0	0	
1 PETERSEN A	4 PALSDOTTIR B	10 HANSEN S	11 ARGE L	18 BRANDENBORG P	21 PALSDOTTIR NOLSOY	33 SAMUELSEN T	0:05	0	0	
1 PETERSEN A	4 PALSDOTTIR B	7 OSBERG JOHANSEN B	10 HANSEN S	18 BRANDENBORG P	33 SAMUELSEN T	77 MITTUN J	0:04	0	0	
4 PALSDOTTIR B	7 OSBERG JOHANSEN B	8 OLSEN R	10 HANSEN S	18 BRANDENBORG P	21 PALSDOTTIR NOLSOY	88 WARDUM R	0:03	0	0	
4 PALSDOTTIR B	8 OLSEN R	10 HANSEN S	21 PALSDOTTIR NOLSOY	23 SVEINBJORNSDOTTIR	77 MITTUN J	88 WARDUM R	0:03	0	0	
1 PETERSEN A	4 PALSDOTTIR B	7 OSBERG JOHANSEN B	8 OLSEN R	10 HANSEN S	18 BRANDENBORG P	77 MITTUN J	0:02	0	0	

Score development								Time Played	G Diff.
4 PALSDOTTIR B	7 OSBERG JOHANSEN B	8 OLSEN R	10 HANSEN S	18 BRANDENBORG P	21 PALSDOTTIR NOLSOY	77 MITTUN J	5:05	+7	
10 HANSEN S	18 BRANDENBORG P	21 PALSDOTTIR NOLSOY	23 SVEINBJORNSDOTTIR	33 SAMUELSEN T	77 MITTUN J	88 WARDUM R	4:09	+3	
2 EGHOLM E	4 PALSDOTTIR B	7 OSBERG JOHANSEN B	8 OLSEN R	10 HANSEN S	18 BRANDENBORG P	21 PALSDOTTIR NOLSOY	0:10	+1	
7 OSBERG JOHANSEN B	18 BRANDENBORG P	21 PALSDOTTIR NOLSOY	23 SVEINBJORNSDOTTIR	33 SAMUELSEN T	77 MITTUN J	88 WARDUM R	0:52	+1	
2 EGHOLM E	4 PALSDOTTIR B	17 ZACHARIASEN L	18 BRANDENBORG P	21 PALSDOTTIR NOLSOY	33 SAMUELSEN T	77 MITTUN J	0:52	+1	

### Line-Up Analysis

Match No: 23

Basel

Attendance: 3.074

### FAR 24 - 33 DEN

#### FAR - Faroe Islands

Score development							Time Played	G Diff.
1 PETERSEN A	4 PALSDOTTIR B	7 OSBERG JOHANSEN B	8 OLSEN R	10 HANSEN S	18 BRANDENBORG P	77 MITTUN J	0:02	0
4 PALSDOTTIR B	7 OSBERG JOHANSEN B	8 OLSEN R	10 HANSEN S	18 BRANDENBORG P	21 PALSDOTTIR NOLSOY	88 WARDUM R	0:03	0
4 PALSDOTTIR B	8 OLSEN R	10 HANSEN S	21 PALSDOTTIR NOLSOY	23 SVEINBJORNSDOTTIR	77 MITTUN J	88 WARDUM R	0:03	0
1 PETERSEN A	4 PALSDOTTIR B	7 OSBERG JOHANSEN B	10 HANSEN S	18 BRANDENBORG P	33 SAMUELSEN T	77 MITTUN J	0:04	0
1 PETERSEN A	4 PALSDOTTIR B	7 OSBERG JOHANSEN B	10 HANSEN S	18 BRANDENBORG P	21 PALSDOTTIR NOLSOY	33 SAMUELSEN T	0:05	0
1 PETERSEN A	4 PALSDOTTIR B	10 HANSEN S	11 ARGE L	18 BRANDENBORG P	21 PALSDOTTIR NOLSOY	33 SAMUELSEN T	0:05	0
2 EGHOLM E	4 PALSDOTTIR B	10 HANSEN S	18 BRANDENBORG P	33 SAMUELSEN T	77 MITTUN J	88 WARDUM R	0:07	0
10 HANSEN S	11 ARGE L	18 BRANDENBORG P	23 SVEINBJORNSDOTTIR	33 SAMUELSEN T	77 MITTUN J	88 WARDUM R	0:10	0
4 PALSDOTTIR B	7 OSBERG JOHANSEN B	10 HANSEN S	18 BRANDENBORG P	21 PALSDOTTIR NOLSOY	33 SAMUELSEN T	77 MITTUN J	0:11	0
4 PALSDOTTIR B	7 OSBERG JOHANSEN B	8 OLSEN R	10 HANSEN S	21 PALSDOTTIR NOLSOY	23 SVEINBJORNSDOTTIR	77 MITTUN J	0:11	0
4 PALSDOTTIR B	10 HANSEN S	11 ARGE L	18 BRANDENBORG P	33 SAMUELSEN T	77 MITTUN J	88 WARDUM R	0:12	0
2 EGHOLM E	4 PALSDOTTIR B	7 OSBERG JOHANSEN B	18 BRANDENBORG P	21 PALSDOTTIR NOLSOY	33 SAMUELSEN T	77 MITTUN J	0:16	0
2 EGHOLM E	4 PALSDOTTIR B	8 OLSEN R	10 HANSEN S	18 BRANDENBORG P	21 PALSDOTTIR NOLSOY	88 WARDUM R	0:17	0
7 OSBERG JOHANSEN B	10 HANSEN S	18 BRANDENBORG P	21 PALSDOTTIR NOLSOY	33 SAMUELSEN T	77 MITTUN J	88 WARDUM R	0:21	0
1 PETERSEN A	4 PALSDOTTIR B	17 ZACHARIASEN L	18 BRANDENBORG P	21 PALSDOTTIR NOLSOY	33 SAMUELSEN T	77 MITTUN J	0:21	0
4 PALSDOTTIR B	7 OSBERG JOHANSEN B	8 OLSEN R	10 HANSEN S	11 ARGE L	18 BRANDENBORG P	88 WARDUM R	0:23	0
2 EGHOLM E	4 PALSDOTTIR B	10 HANSEN S	11 ARGE L	18 BRANDENBORG P	33 SAMUELSEN T	88 WARDUM R	0:24	0
4 PALSDOTTIR B	8 OLSEN R	10 HANSEN S	18 BRANDENBORG P	21 PALSDOTTIR NOLSOY	77 MITTUN J	88 WARDUM R	0:24	0
4 PALSDOTTIR B	7 OSBERG JOHANSEN B	8 OLSEN R	10 HANSEN S	11 ARGE L	23 SVEINBJORNSDOTTIR	77 MITTUN J	0:25	0
1 PETERSEN A	4 PALSDOTTIR B	10 HANSEN S	11 ARGE L	18 BRANDENBORG P	33 SAMUELSEN T	77 MITTUN J	0:31	0
4 PALSDOTTIR B	7 OSBERG JOHANSEN B	8 OLSEN R	10 HANSEN S	18 BRANDENBORG P	33 SAMUELSEN T	77 MITTUN J	0:31	0
4 PALSDOTTIR B	8 OLSEN R	10 HANSEN S	11 ARGE L	23 SVEINBJORNSDOTTIR	77 MITTUN J	88 WARDUM R	0:35	0
2 EGHOLM E	7 OSBERG JOHANSEN B	18 BRANDENBORG P	21 PALSDOTTIR NOLSOY	23 SVEINBJORNSDOTTIR	33 SAMUELSEN T	77 MITTUN J	0:43	0
7 OSBERG JOHANSEN B	10 HANSEN S	18 BRANDENBORG P	21 PALSDOTTIR NOLSOY	23 SVEINBJORNSDOTTIR	33 SAMUELSEN T	77 MITTUN J	0:49	0
13 HOJ B	18 BRANDENBORG P	21 PALSDOTTIR NOLSOY	23 SVEINBJORNSDOTTIR	33 SAMUELSEN T	77 MITTUN J	88 WARDUM R	0:51	0
10 HANSEN S	13 HOJ B	18 BRANDENBORG P	21 PALSDOTTIR NOLSOY	33 SAMUELSEN T	77 MITTUN J	88 WARDUM R	1:00	0
4 PALSDOTTIR B	7 OSBERG JOHANSEN B	8 OLSEN R	10 HANSEN S	18 BRANDENBORG P	77 MITTUN J	88 WARDUM R	1:13	0
1 PETERSEN A	4 PALSDOTTIR B	10 HANSEN S	18 BRANDENBORG P	21 PALSDOTTIR NOLSOY	33 SAMUELSEN T	77 MITTUN J	1:23	0
4 PALSDOTTIR B	7 OSBERG JOHANSEN B	8 OLSEN R	10 HANSEN S	11 ARGE L	18 BRANDENBORG P	77 MITTUN J	1:26	0
17 ZACHARIASEN L	18 BRANDENBORG P	21 PALSDOTTIR NOLSOY	23 SVEINBJORNSDOTTIR	33 SAMUELSEN T	77 MITTUN J	88 WARDUM R	1:33	0
4 PALSDOTTIR B	10 HANSEN S	18 BRANDENBORG P	21 PALSDOTTIR NOLSOY	33 SAMUELSEN T	77 MITTUN J	88 WARDUM R	1:51	0
2 EGHOLM E	17 ZACHARIASEN L	18 BRANDENBORG P	23 SVEINBJORNSDOTTIR	33 SAMUELSEN T	77 MITTUN J	88 WARDUM R	2:53	0
10 HANSEN S	17 ZACHARIASEN L	18 BRANDENBORG P	23 SVEINBJORNSDOTTIR	33 SAMUELSEN T	77 MITTUN J	88 WARDUM R	0:19	-1
1 PETERSEN A	2 EGHOLM E	4 PALSDOTTIR B	18 BRANDENBORG P	21 PALSDOTTIR NOLSOY	33 SAMUELSEN T	77 MITTUN J	0:29	-1
2 EGHOLM E	4 PALSDOTTIR B	18 BRANDENBORG P	21 PALSDOTTIR NOLSOY	33 SAMUELSEN T	77 MITTUN J	88 WARDUM R	0:43	-1
1 PETERSEN A	10 HANSEN S	13 HOJ B	18 BRANDENBORG P	23 SVEINBJORNSDOTTIR	33 SAMUELSEN T	77 MITTUN J	1:03	-1
1 PETERSEN A	4 PALSDOTTIR B	8 OLSEN R	10 HANSEN S	11 ARGE L	18 BRANDENBORG P	77 MITTUN J	1:20	-1
1 PETERSEN A	2 EGHOLM E	4 PALSDOTTIR B	10 HANSEN S	11 ARGE L	18 BRANDENBORG P	33 SAMUELSEN T	1:25	-1
2 EGHOLM E	18 BRANDENBORG P	21 PALSDOTTIR NOLSOY	23 SVEINBJORNSDOTTIR	33 SAMUELSEN T	77 MITTUN J	88 WARDUM R	1:51	-1
1 PETERSEN A	2 EGHOLM E	4 PALSDOTTIR B	10 HANSEN S	18 BRANDENBORG P	33 SAMUELSEN T	77 MITTUN J	3:07	-1
4 PALSDOTTIR B	8 OLSEN R	10 HANSEN S	11 ARGE L	18 BRANDENBORG P	21 PALSDOTTIR NOLSOY	88 WARDUM R	4:02	-2
1 PETERSEN A	2 EGHOLM E	4 PALSDOTTIR B	17 ZACHARIASEN L	18 BRANDENBORG P	33 SAMUELSEN T	77 MITTUN J	2:55	-3
4 PALSDOTTIR B	8 OLSEN R	10 HANSEN S	11 ARGE L	18 BRANDENBORG P	77 MITTUN J	88 WARDUM R	5:45	-4
10 HANSEN S	13 HOJ B	18 BRANDENBORG P	23 SVEINBJORNSDOTTIR	33 SAMUELSEN T	77 MITTUN J	88 WARDUM R	6:25	-5

Empty Goal							Time Played	GF	GA
4 PALSDOTTIR B	7 OSBERG JOHANSEN B	8 OLSEN R	10 HANSEN S	18 BRANDENBORG P	21 PALSDOTTIR NOLSOY	77 MITTUN J	5:05	7	0
4 PALSDOTTIR B	7 OSBERG JOHANSEN B	8 OLSEN R	10 HANSEN S	11 ARGE L	18 BRANDENBORG P	77 MITTUN J	1:26	1	1
2 EGHOLM E	4 PALSDOTTIR B	17 ZACHARIASEN L	18 BRANDENBORG P	21 PALSDOTTIR NOLSOY	33 SAMUELSEN T	77 MITTUN J	0:52	1	0
7 OSBERG JOHANSEN B	10 HANSEN S	18 BRANDENBORG P	21 PALSDOTTIR NOLSOY	23 SVEINBJORNSDOTTIR	33 SAMUELSEN T	77 MITTUN J	0:49	0	0
2 EGHOLM E	7 OSBERG JOHANSEN B	18 BRANDENBORG P	21 PALSDOTTIR NOLSOY	23 SVEINBJORNSDOTTIR	33 SAMUELSEN T	77 MITTUN J	0:43	0	0
4 PALSDOTTIR B	7 OSBERG JOHANSEN B	8 OLSEN R	10 HANSEN S	18 BRANDENBORG P	33 SAMUELSEN T	77 MITTUN J	0:31	1	1
4 PALSDOTTIR B	7 OSBERG JOHANSEN B	8 OLSEN R	10 HANSEN S	11 ARGE L	23 SVEINBJORNSDOTTIR	77 MITTUN J	0:25	0	0
2 EGHOLM E	4 PALSDOTTIR B	7 OSBERG JOHANSEN B	18 BRANDENBORG P	21 PALSDOTTIR NOLSOY	33 SAMUELSEN T	77 MITTUN J	0:16	0	0
4 PALSDOTTIR B	7 OSBERG JOHANSEN B	10 HANSEN S	18 BRANDENBORG P	21 PALSDOTTIR NOLSOY	33 SAMUELSEN T	77 MITTUN J	0:11	0	0
4 PALSDOTTIR B	7 OSBERG JOHANSEN B	8 OLSEN R	10 HANSEN S	21 PALSDOTTIR NOLSOY	23 SVEINBJORNSDOTTIR	77 MITTUN J	0:11	0	0



WOMEN'S EUROPEAN HANDBALL CHAMPIONSHIP  
EHF EURO 2024



Preliminary Round - Group D

WOMEN'S EHF EURO 2024  
AUSTRIA - HUNGARY - SWITZERLAND

TUE 3 DEC 2024  
Start Time: 18:00

Line-Up Analysis  
Match No: 23

Basel

Attendance: 3.074

FAR 24 - 33 DEN

FAR - Faroe Islands

Empty Goal								Time Played	GF	GA						
2	EGHOLM E	4	PALSDOTTIR B	7	OSBERG JOHANSEN B	8	OLSEN R	10	HANSEN S	18	BRANDENBORG P	21	PALSDOTTIR NOLSOY	0:10	1	0



Report Created TUE 3 DEC 2024 19:59

Page 3 of 6



### Line-Up Analysis

Match No: 23

Basel

Attendance: 3.074

### FAR 24 - 33 DEN

#### DEN - Denmark

Lineup efficiency								Time Played	GF	GA
12 KRISTENSEN A	25 JENSEN OSTERGAARD	26 JORGENSEN S	32 HOJLUND M	34 IVERSEN R	41 HALILCEVIC E	42 MOLLER M	7:10	1	5	
3 NIELSEN K	5 IVERSEN S	16 REINHARDT A	21 AAGOT HANSEN A	23 JÖRGENSEN K	26 JORGENSEN S	41 HALILCEVIC E	5:12	1	4	
3 NIELSEN K	16 REINHARDT A	25 JENSEN OSTERGAARD	26 JORGENSEN S	34 IVERSEN R	41 HALILCEVIC E	42 MOLLER M	4:36	2	2	
12 KRISTENSEN A	23 JÖRGENSEN K	25 JENSEN OSTERGAARD	32 HOJLUND M	34 IVERSEN R	41 HALILCEVIC E	42 MOLLER M	3:53	3	0	
4 HANSEN H	5 IVERSEN S	8 HANSEN A	12 KRISTENSEN A	25 JENSEN OSTERGAARD	26 JORGENSEN S	41 HALILCEVIC E	3:22	2	2	
4 HANSEN H	5 IVERSEN S	8 HANSEN A	12 KRISTENSEN A	23 JÖRGENSEN K	25 JENSEN OSTERGAARD	41 HALILCEVIC E	2:31	3	0	
3 NIELSEN K	4 HANSEN H	16 REINHARDT A	25 JENSEN OSTERGAARD	32 HOJLUND M	41 HALILCEVIC E	42 MOLLER M	2:14	4	1	
3 NIELSEN K	16 REINHARDT A	25 JENSEN OSTERGAARD	32 HOJLUND M	34 IVERSEN R	41 HALILCEVIC E	42 MOLLER M	2:07	0	2	
5 IVERSEN S	16 REINHARDT A	25 JENSEN OSTERGAARD	26 JORGENSEN S	34 IVERSEN R	41 HALILCEVIC E	42 MOLLER M	2:06	1	1	
4 HANSEN H	5 IVERSEN S	16 REINHARDT A	25 JENSEN OSTERGAARD	32 HOJLUND M	41 HALILCEVIC E	42 MOLLER M	2:00	1	0	
3 NIELSEN K	4 HANSEN H	16 REINHARDT A	21 AAGOT HANSEN A	23 JÖRGENSEN K	32 HOJLUND M	41 HALILCEVIC E	1:53	3	0	
12 KRISTENSEN A	23 JÖRGENSEN K	25 JENSEN OSTERGAARD	26 JORGENSEN S	34 IVERSEN R	41 HALILCEVIC E	42 MOLLER M	1:41	0	0	
4 HANSEN H	5 IVERSEN S	16 REINHARDT A	21 AAGOT HANSEN A	23 JÖRGENSEN K	41 HALILCEVIC E	42 MOLLER M	1:16	2	0	
4 HANSEN H	5 IVERSEN S	8 HANSEN A	12 KRISTENSEN A	25 JENSEN OSTERGAARD	26 JORGENSEN S	34 IVERSEN R	1:07	1	1	
12 KRISTENSEN A	23 JÖRGENSEN K	25 JENSEN OSTERGAARD	26 JORGENSEN S	32 HOJLUND M	34 IVERSEN R	41 HALILCEVIC E	1:06	0	0	
3 NIELSEN K	16 REINHARDT A	21 AAGOT HANSEN A	23 JÖRGENSEN K	26 JORGENSEN S	41 HALILCEVIC E	42 MOLLER M	1:05	0	1	
3 NIELSEN K	5 IVERSEN S	8 HANSEN A	12 KRISTENSEN A	23 JÖRGENSEN K	25 JENSEN OSTERGAARD	32 HOJLUND M	1:00	1	0	
5 IVERSEN S	8 HANSEN A	12 KRISTENSEN A	25 JENSEN OSTERGAARD	26 JORGENSEN S	34 IVERSEN R	41 HALILCEVIC E	0:59	0	0	
8 HANSEN A	12 KRISTENSEN A	25 JENSEN OSTERGAARD	26 JORGENSEN S	34 IVERSEN R	41 HALILCEVIC E	42 MOLLER M	0:58	0	0	
4 HANSEN H	5 IVERSEN S	16 REINHARDT A	21 AAGOT HANSEN A	23 JÖRGENSEN K	32 HOJLUND M	41 HALILCEVIC E	0:57	0	1	
3 NIELSEN K	8 HANSEN A	23 JÖRGENSEN K	25 JENSEN OSTERGAARD	34 IVERSEN R	41 HALILCEVIC E	42 MOLLER M	0:52	1	0	
3 NIELSEN K	16 REINHARDT A	25 JENSEN OSTERGAARD	26 JORGENSEN S	32 HOJLUND M	41 HALILCEVIC E	42 MOLLER M	0:51	1	0	
5 IVERSEN S	16 REINHARDT A	21 AAGOT HANSEN A	23 JÖRGENSEN K	26 JORGENSEN S	41 HALILCEVIC E	42 MOLLER M	0:51	0	1	
4 HANSEN H	5 IVERSEN S	16 REINHARDT A	25 JENSEN OSTERGAARD	34 IVERSEN R	41 HALILCEVIC E	42 MOLLER M	0:50	0	0	
23 JÖRGENSEN K	25 JENSEN OSTERGAARD	26 JORGENSEN S	32 HOJLUND M	34 IVERSEN R	41 HALILCEVIC E	42 MOLLER M	0:49	2	0	
3 NIELSEN K	4 HANSEN H	5 IVERSEN S	8 HANSEN A	23 JÖRGENSEN K	25 JENSEN OSTERGAARD	34 IVERSEN R	0:43	0	0	
3 NIELSEN K	4 HANSEN H	5 IVERSEN S	8 HANSEN A	12 KRISTENSEN A	25 JENSEN OSTERGAARD	41 HALILCEVIC E	0:37	0	0	
4 HANSEN H	5 IVERSEN S	21 AAGOT HANSEN A	23 JÖRGENSEN K	32 HOJLUND M	41 HALILCEVIC E	42 MOLLER M	0:36	0	1	
4 HANSEN H	5 IVERSEN S	16 REINHARDT A	21 AAGOT HANSEN A	23 JÖRGENSEN K	26 JORGENSEN S	41 HALILCEVIC E	0:34	0	1	
4 HANSEN H	5 IVERSEN S	21 AAGOT HANSEN A	23 JÖRGENSEN K	26 JORGENSEN S	41 HALILCEVIC E	42 MOLLER M	0:26	1	0	
3 NIELSEN K	4 HANSEN H	16 REINHARDT A	25 JENSEN OSTERGAARD	34 IVERSEN R	41 HALILCEVIC E	42 MOLLER M	0:25	0	0	
5 IVERSEN S	8 HANSEN A	12 KRISTENSEN A	16 REINHARDT A	25 JENSEN OSTERGAARD	32 HOJLUND M	34 IVERSEN R	0:21	0	0	
5 IVERSEN S	16 REINHARDT A	23 JÖRGENSEN K	25 JENSEN OSTERGAARD	34 IVERSEN R	41 HALILCEVIC E	42 MOLLER M	0:19	1	0	
3 NIELSEN K	4 HANSEN H	16 REINHARDT A	21 AAGOT HANSEN A	23 JÖRGENSEN K	41 HALILCEVIC E	42 MOLLER M	0:19	0	0	
3 NIELSEN K	12 KRISTENSEN A	23 JÖRGENSEN K	25 JENSEN OSTERGAARD	34 IVERSEN R	41 HALILCEVIC E	42 MOLLER M	0:18	0	0	
5 IVERSEN S	16 REINHARDT A	25 JENSEN OSTERGAARD	26 JORGENSEN S	32 HOJLUND M	41 HALILCEVIC E	42 MOLLER M	0:18	0	0	
3 NIELSEN K	4 HANSEN H	5 IVERSEN S	8 HANSEN A	12 KRISTENSEN A	25 JENSEN OSTERGAARD	34 IVERSEN R	0:16	0	0	
3 NIELSEN K	4 HANSEN H	16 REINHARDT A	21 AAGOT HANSEN A	23 JÖRGENSEN K	26 JORGENSEN S	41 HALILCEVIC E	0:15	0	0	
5 IVERSEN S	16 REINHARDT A	21 AAGOT HANSEN A	23 JÖRGENSEN K	26 JORGENSEN S	32 HOJLUND M	41 HALILCEVIC E	0:15	0	1	
3 NIELSEN K	8 HANSEN A	12 KRISTENSEN A	25 JENSEN OSTERGAARD	34 IVERSEN R	41 HALILCEVIC E	42 MOLLER M	0:14	0	0	
4 HANSEN H	5 IVERSEN S	8 HANSEN A	12 KRISTENSEN A	23 JÖRGENSEN K	25 JENSEN OSTERGAARD	34 IVERSEN R	0:14	0	0	
3 NIELSEN K	4 HANSEN H	5 IVERSEN S	8 HANSEN A	23 JÖRGENSEN K	25 JENSEN OSTERGAARD	41 HALILCEVIC E	0:14	0	0	
5 IVERSEN S	16 REINHARDT A	25 JENSEN OSTERGAARD	32 HOJLUND M	34 IVERSEN R	41 HALILCEVIC E	42 MOLLER M	0:13	0	0	
4 HANSEN H	5 IVERSEN S	8 HANSEN A	12 KRISTENSEN A	23 JÖRGENSEN K	25 JENSEN OSTERGAARD	26 JORGENSEN S	0:12	0	0	
3 NIELSEN K	16 REINHARDT A	21 AAGOT HANSEN A	23 JÖRGENSEN K	32 HOJLUND M	41 HALILCEVIC E	42 MOLLER M	0:12	1	0	
5 IVERSEN S	16 REINHARDT A	21 AAGOT HANSEN A	23 JÖRGENSEN K	32 HOJLUND M	41 HALILCEVIC E	42 MOLLER M	0:06	0	0	
12 KRISTENSEN A	23 JÖRGENSEN K	25 JENSEN OSTERGAARD	26 JORGENSEN S	32 HOJLUND M	34 IVERSEN R	42 MOLLER M	0:05	0	0	
4 HANSEN H	5 IVERSEN S	8 HANSEN A	12 KRISTENSEN A	25 JENSEN OSTERGAARD	34 IVERSEN R	42 MOLLER M	0:05	0	0	
3 NIELSEN K	25 JENSEN OSTERGAARD	26 JORGENSEN S	32 HOJLUND M	34 IVERSEN R	41 HALILCEVIC E	42 MOLLER M	0:04	0	0	
5 IVERSEN S	8 HANSEN A	12 KRISTENSEN A	23 JÖRGENSEN K	25 JENSEN OSTERGAARD	32 HOJLUND M	34 IVERSEN R	0:03	0	0	
3 NIELSEN K	5 IVERSEN S	8 HANSEN A	12 KRISTENSEN A	25 JENSEN OSTERGAARD	32 HOJLUND M	34 IVERSEN R	0:01	0	0	

Score development								Time Played	G Diff.
3 NIELSEN K	4 HANSEN H	16 REINHARDT A	21 AAGOT HANSEN A	23 JÖRGENSEN K	32 HOJLUND M	41 HALILCEVIC E	1:53	+3	
3 NIELSEN K	4 HANSEN H	16 REINHARDT A	25 JENSEN OSTERGAARD	32 HOJLUND M	41 HALILCEVIC E	42 MOLLER M	2:14	+3	
4 HANSEN H	5 IVERSEN S	8 HANSEN A	12 KRISTENSEN A	23 JÖRGENSEN K	25 JENSEN OSTERGAARD	41 HALILCEVIC E	2:31	+3	



## Line-Up Analysis

Match No: 23

Basel

Attendance: 3.074

## FAR 24 - 33 DEN

### DEN - Denmark

Score development								Time Played	G Diff.
12 KRISTENSEN A	23 JÖRGENSEN K	25 JENSEN OSTERGAARD	32 HOJLUND M	34 IVERSEN R	41 HALILCEVIC E	42 MOLLER M	3:53	+3	
23 JÖRGENSEN K	25 JENSEN OSTERGAARD	26 JORGENSEN S	32 HOJLUND M	34 IVERSEN R	41 HALILCEVIC E	42 MOLLER M	0:49	+2	
4 HANSEN H	5 IVERSEN S	16 REINHARDT A	21 AAGOT HANSEN A	23 JÖRGENSEN K	41 HALILCEVIC E	42 MOLLER M	1:16	+2	
3 NIELSEN K	16 REINHARDT A	21 AAGOT HANSEN A	23 JÖRGENSEN K	32 HOJLUND M	41 HALILCEVIC E	42 MOLLER M	0:12	+1	
5 IVERSEN S	16 REINHARDT A	23 JÖRGENSEN K	25 JENSEN OSTERGAARD	34 IVERSEN R	41 HALILCEVIC E	42 MOLLER M	0:19	+1	
4 HANSEN H	5 IVERSEN S	21 AAGOT HANSEN A	23 JÖRGENSEN K	26 JORGENSEN S	41 HALILCEVIC E	42 MOLLER M	0:26	+1	
3 NIELSEN K	16 REINHARDT A	25 JENSEN OSTERGAARD	26 JORGENSEN S	32 HOJLUND M	41 HALILCEVIC E	42 MOLLER M	0:51	+1	
3 NIELSEN K	8 HANSEN A	23 JÖRGENSEN K	25 JENSEN OSTERGAARD	34 IVERSEN R	41 HALILCEVIC E	42 MOLLER M	0:52	+1	
3 NIELSEN K	5 IVERSEN S	8 HANSEN A	12 KRISTENSEN A	23 JÖRGENSEN K	25 JENSEN OSTERGAARD	32 HOJLUND M	1:00	+1	
4 HANSEN H	5 IVERSEN S	16 REINHARDT A	25 JENSEN OSTERGAARD	32 HOJLUND M	41 HALILCEVIC E	42 MOLLER M	2:00	+1	
3 NIELSEN K	5 IVERSEN S	8 HANSEN A	12 KRISTENSEN A	25 JENSEN OSTERGAARD	32 HOJLUND M	34 IVERSEN R	0:01	0	
5 IVERSEN S	8 HANSEN A	12 KRISTENSEN A	23 JÖRGENSEN K	25 JENSEN OSTERGAARD	32 HOJLUND M	34 IVERSEN R	0:03	0	
3 NIELSEN K	25 JENSEN OSTERGAARD	26 JORGENSEN S	32 HOJLUND M	34 IVERSEN R	41 HALILCEVIC E	42 MOLLER M	0:04	0	
12 KRISTENSEN A	23 JÖRGENSEN K	25 JENSEN OSTERGAARD	26 JORGENSEN S	32 HOJLUND M	34 IVERSEN R	42 MOLLER M	0:05	0	
4 HANSEN H	5 IVERSEN S	8 HANSEN A	12 KRISTENSEN A	25 JENSEN OSTERGAARD	34 IVERSEN R	42 MOLLER M	0:05	0	
5 IVERSEN S	16 REINHARDT A	21 AAGOT HANSEN A	23 JÖRGENSEN K	32 HOJLUND M	41 HALILCEVIC E	42 MOLLER M	0:06	0	
4 HANSEN H	5 IVERSEN S	8 HANSEN A	12 KRISTENSEN A	23 JÖRGENSEN K	25 JENSEN OSTERGAARD	26 JORGENSEN S	0:12	0	
5 IVERSEN S	16 REINHARDT A	25 JENSEN OSTERGAARD	32 HOJLUND M	34 IVERSEN R	41 HALILCEVIC E	42 MOLLER M	0:13	0	
3 NIELSEN K	8 HANSEN A	12 KRISTENSEN A	25 JENSEN OSTERGAARD	34 IVERSEN R	41 HALILCEVIC E	42 MOLLER M	0:14	0	
4 HANSEN H	5 IVERSEN S	8 HANSEN A	12 KRISTENSEN A	23 JÖRGENSEN K	25 JENSEN OSTERGAARD	34 IVERSEN R	0:14	0	
3 NIELSEN K	4 HANSEN H	5 IVERSEN S	8 HANSEN A	23 JÖRGENSEN K	25 JENSEN OSTERGAARD	41 HALILCEVIC E	0:14	0	
3 NIELSEN K	4 HANSEN H	16 REINHARDT A	21 AAGOT HANSEN A	23 JÖRGENSEN K	26 JORGENSEN S	41 HALILCEVIC E	0:15	0	
3 NIELSEN K	4 HANSEN H	5 IVERSEN S	8 HANSEN A	12 KRISTENSEN A	25 JENSEN OSTERGAARD	34 IVERSEN R	0:16	0	
3 NIELSEN K	12 KRISTENSEN A	23 JÖRGENSEN K	25 JENSEN OSTERGAARD	34 IVERSEN R	41 HALILCEVIC E	42 MOLLER M	0:18	0	
5 IVERSEN S	16 REINHARDT A	25 JENSEN OSTERGAARD	26 JORGENSEN S	32 HOJLUND M	41 HALILCEVIC E	42 MOLLER M	0:18	0	
3 NIELSEN K	4 HANSEN H	16 REINHARDT A	21 AAGOT HANSEN A	23 JÖRGENSEN K	41 HALILCEVIC E	42 MOLLER M	0:19	0	
5 IVERSEN S	8 HANSEN A	12 KRISTENSEN A	16 REINHARDT A	25 JENSEN OSTERGAARD	32 HOJLUND M	34 IVERSEN R	0:21	0	
3 NIELSEN K	4 HANSEN H	16 REINHARDT A	25 JENSEN OSTERGAARD	34 IVERSEN R	41 HALILCEVIC E	42 MOLLER M	0:25	0	
3 NIELSEN K	4 HANSEN H	5 IVERSEN S	8 HANSEN A	12 KRISTENSEN A	25 JENSEN OSTERGAARD	41 HALILCEVIC E	0:37	0	
3 NIELSEN K	4 HANSEN H	5 IVERSEN S	8 HANSEN A	23 JÖRGENSEN K	25 JENSEN OSTERGAARD	34 IVERSEN R	0:43	0	
4 HANSEN H	5 IVERSEN S	16 REINHARDT A	25 JENSEN OSTERGAARD	34 IVERSEN R	41 HALILCEVIC E	42 MOLLER M	0:50	0	
8 HANSEN A	12 KRISTENSEN A	25 JENSEN OSTERGAARD	26 JORGENSEN S	34 IVERSEN R	41 HALILCEVIC E	42 MOLLER M	0:58	0	
5 IVERSEN S	8 HANSEN A	12 KRISTENSEN A	25 JENSEN OSTERGAARD	26 JORGENSEN S	34 IVERSEN R	42 MOLLER M	0:59	0	
12 KRISTENSEN A	23 JÖRGENSEN K	25 JENSEN OSTERGAARD	26 JORGENSEN S	32 HOJLUND M	34 IVERSEN R	41 HALILCEVIC E	1:06	0	
4 HANSEN H	5 IVERSEN S	8 HANSEN A	12 KRISTENSEN A	25 JENSEN OSTERGAARD	26 JORGENSEN S	34 IVERSEN R	1:07	0	
12 KRISTENSEN A	23 JÖRGENSEN K	25 JENSEN OSTERGAARD	26 JORGENSEN S	34 IVERSEN R	41 HALILCEVIC E	42 MOLLER M	1:41	0	
5 IVERSEN S	16 REINHARDT A	25 JENSEN OSTERGAARD	26 JORGENSEN S	34 IVERSEN R	41 HALILCEVIC E	42 MOLLER M	2:06	0	
4 HANSEN H	5 IVERSEN S	8 HANSEN A	12 KRISTENSEN A	25 JENSEN OSTERGAARD	26 JORGENSEN S	41 HALILCEVIC E	3:22	0	
3 NIELSEN K	16 REINHARDT A	25 JENSEN OSTERGAARD	26 JORGENSEN S	34 IVERSEN R	41 HALILCEVIC E	42 MOLLER M	4:36	0	
5 IVERSEN S	16 REINHARDT A	21 AAGOT HANSEN A	23 JÖRGENSEN K	26 JORGENSEN S	32 HOJLUND M	41 HALILCEVIC E	0:15	-1	
4 HANSEN H	5 IVERSEN S	16 REINHARDT A	21 AAGOT HANSEN A	23 JÖRGENSEN K	26 JORGENSEN S	41 HALILCEVIC E	0:34	-1	
4 HANSEN H	5 IVERSEN S	21 AAGOT HANSEN A	23 JÖRGENSEN K	32 HOJLUND M	41 HALILCEVIC E	42 MOLLER M	0:36	-1	
5 IVERSEN S	16 REINHARDT A	21 AAGOT HANSEN A	23 JÖRGENSEN K	26 JORGENSEN S	41 HALILCEVIC E	42 MOLLER M	0:51	-1	
4 HANSEN H	5 IVERSEN S	16 REINHARDT A	21 AAGOT HANSEN A	23 JÖRGENSEN K	32 HOJLUND M	41 HALILCEVIC E	0:57	-1	
3 NIELSEN K	16 REINHARDT A	21 AAGOT HANSEN A	23 JÖRGENSEN K	26 JORGENSEN S	41 HALILCEVIC E	42 MOLLER M	1:05	-1	
3 NIELSEN K	16 REINHARDT A	25 JENSEN OSTERGAARD	32 HOJLUND M	34 IVERSEN R	41 HALILCEVIC E	42 MOLLER M	2:07	-2	
3 NIELSEN K	5 IVERSEN S	16 REINHARDT A	21 AAGOT HANSEN A	23 JÖRGENSEN K	26 JORGENSEN S	41 HALILCEVIC E	5:12	-3	
12 KRISTENSEN A	25 JENSEN OSTERGAARD	26 JORGENSEN S	32 HOJLUND M	34 IVERSEN R	41 HALILCEVIC E	42 MOLLER M	7:10	-4	

Empty Goal								Time Played	GF	GA
3 NIELSEN K	5 IVERSEN S	8 HANSEN A	12 KRISTENSEN A	23 JÖRGENSEN K	25 JENSEN OSTERGAARD	32 HOJLUND M	1:00	1	0	
3 NIELSEN K	8 HANSEN A	23 JÖRGENSEN K	25 JENSEN OSTERGAARD	34 IVERSEN R	41 HALILCEVIC E	42 MOLLER M	0:52	1	0	
23 JÖRGENSEN K	25 JENSEN OSTERGAARD	26 JORGENSEN S	32 HOJLUND M	34 IVERSEN R	41 HALILCEVIC E	42 MOLLER M	0:49	2	0	
3 NIELSEN K	4 HANSEN H	5 IVERSEN S	8 HANSEN A	23 JÖRGENSEN K	25 JENSEN OSTERGAARD	34 IVERSEN R	0:43	0	0	
4 HANSEN H	5 IVERSEN S	21 AAGOT HANSEN A	23 JÖRGENSEN K	32 HOJLUND M	41 HALILCEVIC E	42 MOLLER M	0:36	0	1	
4 HANSEN H	5 IVERSEN S	21 AAGOT HANSEN A	23 JÖRGENSEN K	26 JORGENSEN S	41 HALILCEVIC E	42 MOLLER M	0:26	1	0	

Line-Up Analysis  
Match No: 23

Basel

Attendance: 3.074

FAR 24 - 33 DEN

DEN - Denmark

Empty Goal								Time Played	GF	GA
3 NIELSEN K	4 HANSEN H	5 IVERSEN S	8 HANSEN A	23 JØRGENSEN K	25 JENSEN OSTERGAARD	41 HALILCEVIC E	0:14	0	0	
3 NIELSEN K	25 JENSEN OSTERGAARD	26 JORGENSEN S	32 HOJLUND M	34 IVERSEN R	41 HALILCEVIC E	42 MOLLER M	0:04	0	0	
5 IVERSEN S	8 HANSEN A	12 KRISTENSEN A	23 JØRGENSEN K	25 JENSEN OSTERGAARD	32 HOJLUND M	34 IVERSEN R	0:03	0	0	

Legend:  
G Diff. Goals Difference