

SUN 18 JAN 2026
Start Time: 20:30

Preliminary Round - Group B

Start List

Herning

Match No: 9

ROU - DEN

Referees: BARYSAS Tomas (LTU) / PETRUSIS Povilas (LTU)
Reserve: LAH Bojan (SLO) / SOK David (SLO)
EHF Observer: SONDORS Zigmars (LAT)

EHF Supervisor: BOJIC-CACIC Lidija (CRO)
Timekeeper: ZACHARIASSEN Svend (DEN)
Scorekeeper: HOEHRMANN Ernst (DEN)

ROU - Romania

No.	Name	Pos.	Height m	Int. Matches		Competition Statistics							
				MP	G	MP	G	7mG	YC	2Min	RC	S	7mS
1	IANCU Ionut	GK	1.92	91	7	1						8	1
16	POPESCU Mihai	GK	1.95	250	8	1						2	
2	VERES Denis	LW	1.77	14	10	1	4						
5	NISTOR Ionut	RW	1.87	52	84	1	2						
6	BOTEA Tudor	LB	1.94	42	63	1							
7	ANDREI Alexandru	LW	1.80	22	15	1							
8	MILITARU Robert	LB	1.96	96	17	1							
9	GRIGORE Sorin	RW	1.93	14	8	1	1						
11	NAGY Robert	P	1.92	28	25								
13	GHITA Radu	RB	1.89	76	98	1	2						
17	RACOTEA Dan	LB	2.03	91	79	1	2			1			
23	DEDU Calin	P	2.07	49	54	1	3						
25	STANESCU Ionut	RB	1.92	16	13	1	1						
41	TRIF Razvan	LB	1.92	10	1								
44	STANCIUC Daniel	CB	1.89	27	91	1	8	2					
47	BUZLE Andrei	LB	1.98	65	118	1	6		1				
(NN)	CUMPANICI Stefan	CB	1.98	32	30	1	1						
(NN)	SZÁSZ András	P	1.98	36	28	1	4						
Headcoach		BURICEA George		Bench/Team									

ROU Played		
PR	POR	34-40
PR	DEN	18 JAN
PR	MKD	20 JAN

DEN - Denmark

No.	Name	Pos.	Height m	Int. Matches		Competition Statistics							
				MP	G	MP	G	7mG	YC	2Min	RC	S	7mS
12	NIELSEN Emil	GK	1.95	71	6	1						10	
20	MØLLER Kevin	GK	2.00	97	8	1						1	
3	KIRKELØKKE Niclas	RB	1.95	110	204	1				1			
4	LANDIN Magnus	LW	2.00	164	302	1	2						
7	JAKOBSEN Emil	LW	1.90	103	370	1	4	3					
11	LAUGE Rasmus	CB	1.95	187	470	1	3						
15	SAUGSTRUP Magnus	P	1.95	108	208	1	2						
19	GIDSEL Mathias	RB	1.90	98	600	1	8						
25	JØRGENSEN Lukas	P	1.94	64	181	1	3						
28	ANDERSSON Lasse	LB	1.96	89	123	1	1						
33	BERGHOLT Emil	P	1.90	26	13	1							
34	HALD Simon	P	2.03	115	119	1	1			1			
38	HOXER Mads	RB	1.95	13	27	1	1						
43	PYTLICK Simon	CB	1.93	63	296	1	9						
49	ANDERSEN Frederik	RW	1.86	5	10								
64	MØLLER Lasse	LB	1.99	21	27								
(NN)	HANSEN Jóhan	RW	1.90	112	204	1	2						
(NN)	MENSAH Mads	CB	1.88	218	339								
(NN)	SVANE Mads	CB	1.85	3	6	1							
Headcoach		JACOBSEN Nikolaj		Bench/Team									

DEN Played		
PR	MKD	36-44
PR	ROU	18 JAN
PR	POR	20 JAN

Notes:
Players below the bold line are not playing in this match.

Legend:	
(NN) Not nominated	2Min 2-Minute Suspensions
CB Centre Back	G Goals
LW Left Wing	MP Matches Played
PR Preliminary Round	RB Right Back
RW Right Wing	S Saves
	7mG 7-metre Goals
	GK Goalkeeper
	P Line Player
	RC Red Cards (Direct and after 3rd 2-Minute Suspension)
	YC Yellow Cards
	7mS 7-metre Saves
	LB Left Back
	Pos Position

OFFICIAL PARTNERS



EHF PARTNERS



NATIONAL SUPPLIERS



Results

Match No: 9

ROU 24 - 39 DEN

(17 - 22) (7 - 17)

Herning

Attendance: 14.535

Referees: BARYSAS Tomas (LTU) / PETRUSIS Povilas (LTU)

Romania

Coach: BURICEA George

Time outs: 2

No.	Name	Total		Goals / Shots						Punishments			TP			
		G/S	%	7m	6m	Wing	BT	FB	FTO	9m	EG	YC		RC	2M	
1	IANCU Ionut															42:06
2	VERES Denis															30:00
5	NISTOR Ionut	2/3	67		1/1	0/1									1	30:59
6	BOTEA Tudor	1/7	14				1/1			0/6						9:37
7	ANDREI Alexandru	0/2	0			0/2										30:42
8	MILITARU Robert														2	18:20
9	GRIGORE Sorin	0/1	0			0/1										27:20
11	NAGY Robert	4/4	100		3/3							1/1				34:19
13	GHITA Radu	4/6	67		1/1	0/1	1/1			2/3						25:30
16	POPESCU Mihai															4:49
17	RACOTEA Dan															16:26
23	DEDU Calin	4/5	80		4/4					0/1						51:18
25	STANESCU Ionut	3/7	43							3/7						19:44
41	TRIF Razvan	0/1	0							0/1				1		7:21
44	STANCIUC Daniel	3/7	43	1/1			2/2			0/4						27:30
47	BUZLE Andrei	3/11	27		1/2		1/2			1/7						35:59
Totals		24/54	44	1/1	10/11	0/5	5/6			6/29	2/2				4	60:00

No.	Name	Total		Saves / Shots						
		S/S	%	7m	6m	Wing	BT	FB	FTO	9m
1	IANCU Ionut	5/37	14	1/4	0/6	0/3	0/10	1/4	0/1	3/9
16	POPESCU Mihai	0/4	0						0/1	0/3
EG		3								
Totals		5/44	11	1/4	0/6	0/3	0/10	1/4	0/2	3/12

Denmark

Coach: JACOBSEN Nikolaj

Time outs: 2

No.	Name	Total		Goals / Shots						Punishments			TP			
		G/S	%	7m	6m	Wing	BT	FB	FTO	9m	EG	YC		RC	2M	
3	KIRKELOKKE Niclas															
4	LANDIN Magnus	1/1	100			1/1										30:00
7	JAKOBSEN Emil	5/6	83	3/4		2/2										24:46
11	LAUGE Rasmus	3/3	100		1/1					1/1	1/1					22:49
12	NIELSEN Emil															
15	SAUGSTRUP Magnus	1/1	100					1/1								44:35
19	GIDSEL Mathias	9/13	69				7/7	0/2		0/2	2/2					53:59
20	MOLLER Kevin	0/1	0								0/1					55:58
25	JORGENSEN Lukas															3:59
28	ANDERSSON Lasse	1/1	100							1/1						6:01
33	BERGHOLT Emil															19:23
34	HALD Simon	0/1	0								0/1					30:52
38	HOXER Mads	8/11	73		2/2			2/3	1/1	3/5						56:28
43	PYTICK Simon	8/9	89		3/3		2/2			3/4						33:32
49	ANDERSEN Frederik	0/1	0			0/1										22:53
64	MOLLER Lasse	3/4	75				1/1			1/1	1/2					14:45
Totals		39/52	75	3/4	6/6	3/4	10/10	3/6	2/2	9/14	3/6					60:00

No.	Name	Total		Saves / Shots						
		S/S	%	7m	6m	Wing	BT	FB	FTO	9m
12	NIELSEN Emil									
20	MOLLER Kevin	17/39	44	0/1	0/10	4/4	1/6			12/18
EG		2								
Totals		17/41	41	0/1	0/10	4/4	1/6			12/18

Attacks

Team:	All		Player Majority		Player Minority		Position Attacks		FB		Ind. FB		Team FB		Att. Dur. (min)	Turnover		
	G/Att.	%	G/Att.	%	G/Att.	%	G/Att.	%	G/Att.	%	G/Att.	%	G/Att.	%		All	%	TOFB
ROU	24/55	44			6/8	75	22/53	42						0:38	8	15	0	
DEN	39/55	71	9/9	100			31/41	76	3/6	50			3/6	50	0:26	4	7	0

RUNNING SCORE	
ROU - DEN	
1st Half	
GHITA R	1 (1) 0
GHITA R	2 (2) 0
BUZLE A	3 (3) 1 JAKOBSEN E
DEDU C	3 (4) 2 HOXER M
DEDU C	3 (4) 3 JAKOBSEN E
DEDU C	4 (5) 3
STANCIUC D	4 (5) 4 PYTLICK S
STANCIUC D	5 (6) 4
STANCIUC D	5 (6) 5 PYTLICK S
STANCIUC D	5 (7) 6 LAUGE R
STANCIUC D	6 (8) 6
STANCIUC D	6 (9) 7 HOXER M
STANCIUC D	6 (10) 8 HOXER M
STANCIUC D	6 (11) 9 SAUGSTRUP M
BUZLE A	7 (12) 9
BUZLE A	7 (12) 10 LAUGE R
DEDU C	8 (13) 10
DEDU C	8 (13) 11 PYTLICK S
DEDU C	9 (14) 11
DEDU C	9 (14) 12 LAUGE R
DEDU C	9 (17) 13 PYTLICK S
STANESCU I	10 (18) 13
STANESCU I	10 (18) 14 PYTLICK S
BUZLE A	11 (21) 14
BUZLE A	11 (22) 15 GIDSEL M
BUZLE A	11 (23) 16 GIDSEL M
STANESCU I	12 (23) 16
STANESCU I	12 (24) 17 PYTLICK S
NISTOR I	13 (24) 17
NAGY R	14 (25) 17
NAGY R	14 (25) 18 PYTLICK S
NAGY R	14 (26) 19 GIDSEL M
NAGY R	14 (27) 20 GIDSEL M
NAGY R	15 (27) 20
NAGY R	15 (28) 21 JAKOBSEN E
DEDU C	16 (29) 21
NISTOR I	17 (29) 21
NISTOR I	17 (29) 22 JAKOBSEN E
2nd Half	
GHITA R	17 (31) 23 PYTLICK S
GHITA R	18 (33) 23
GHITA R	18 (34) 24 JAKOBSEN E
GHITA R	18 (35) 25 HOXER M
GHITA R	18 (36) 26 GIDSEL M
GHITA R	18 (38) 27 HOXER M
GHITA R	18 (41) 28 GIDSEL M
GHITA R	18 (41) 29 GIDSEL M
GHITA R	19 (42) 29
GHITA R	19 (44) 30 GIDSEL M
GHITA R	19 (46) 31 LANDIN M
STANCIUC D	20 (49) 31
STANCIUC D	20 (49) 32 MOLLER L
STANCIUC D	20 (50) 33 MOLLER L
NAGY R	21 (51) 33
NAGY R	21 (52) 34 GIDSEL M
NAGY R	21 (53) 35 MOLLER L
BOTEA T	22 (53) 35
BOTEA T	22 (54) 36 HOXER M
NAGY R	23 (55) 36
NAGY R	23 (57) 37 HOXER M
STANESCU I	24 (58) 37
STANESCU I	24 (58) 38 HOXER M
STANESCU I	24 (60) 39 ANDERSSON L

OFFICIAL PARTNERS



EHF PARTNERS



NATIONAL SUPPLIERS



Results

Match No: 9

Herning
Attendance: 14.535

Legend:							
%	Efficiency	2M	2-Minute Suspensions	7m	7-metre Penalty Shots	9m	9-metre Shots
Att. Dur.	Average Attack Duration	BT	Breakthroughs	FB	Fast Breaks	FTO	Fast Throw off
G/Att.	Goals/Attacks	G/S	Goals/Shots	No.	Uniform Number		
RC	Red Cards (Direct and after Third 2-Minute Suspension)			S/S	Saves/Shots		
TOFB	Turnover during Fast Breaks			TP	Time Played	Wing	Wing Shots

OFFICIAL PARTNERS



EHF PARTNERS



NATIONAL SUPPLIERS



Match Team Statistics

Herning

Match No: 9

ROU 24 - 39 DEN
(17 - 22) (7 - 17)

Referees: BARYSAS Tomas (LTU) / PETRUSIS Povilas (LTU)

ROU - Romania

Coach: BURICEA George

Time outs: 2

No.	Name	Total		All Goals / Shots								Punishments				Offence			Defence			TP		
		G/S	%	7m	7m%	6m	Wing	BT	FB	FTO	9m	EG	YC	RC	2M	2+2	AS	R7	TO/TF	ST	BS		P7	
1	IANCU Ionut																	1					42:06	
2	VERES Denis																						30:00	
5	NISTOR Ionut	2/3	67			1/1	0/1															1	30:59	
6	BOTEAN Tudor	1/7	14																				9:37	
7	ANDREI Alexandru	0/2	0				0/2																30:42	
8	MILITARU Robert																					1	2	18:20
9	GRIGORE Sorin	0/1	0				0/1																	27:20
11	NAGY Robert	4/4	100			3/3																	1	34:19
13	GHITA Radu	4/6	67			1/1	0/1	1/1																25:30
16	POPESCU Mihai																							4:49
17	RACOTEA Dan																							16:26
23	DEDU Calin	4/5	80			4/4																		51:18
25	STANESCU Ionut	3/7	43																					19:44
41	TRIF Razvan	0/1	0																					7:21
44	STANCIUC Daniel	3/7	43	1/1	100																			27:30
47	BUZLE Andrei	3/11	27			1/2		1/2																35:59
Totals		24/54	44	1/1	100	10/11	0/5	5/6																4

No.	Name	Total		All Saves / Shots										
		S/S	%	7m	7m%	Near Shots			FB	FTO	9m	9m%		
				All	All%	6m	Wing	BT						
1	IANCU Ionut	5/37	14	1/4	25	0/19	0	0/6	0/3	0/10	1/4	0/1	3/9	33
16	POPESCU Mihai	0/4	0									0/1	0/3	0
EG		3												
Totals		5/44	11	1/4	25	0/19	0	0/6	0/3	0/10	1/4	0/2	3/12	25

Attacks

Team	All		Player Majority		Player Minority		Position Attacks		FB		Ind. FB		Team FB		Att. Dur. (min)	Turnover		
	G/Att.	%	G/Att.	%	G/Att.	%	G/Att.	%	G/Att.	%	G/Att.	%	G/Att.	%		All	%	TOFB
ROU	24/55	44			6/8	75	22/53	42							0:38	8	15	0

Team Shots

	Goals	Saves	Missed	Post	Blocked	Total	G/S %	Prop %
6m Shots	10			1		11	91	20
Wing Shots		4		1		5	0	9
L R		2 2		1		2 3	0 0	4 6
9m Shots	6	12	1	3	7	29	21	54
L C R	1 3 2	2 6 3	1	1 2	1 6	5 18 5	20 17 40	9 33 9
7m Penalty Throws	1					1	100	2
Fast Breaks								0
Breakthroughs	5	1				6	83	11
Fast Throw Offs								0
Empty Goals	2					2	100	4
Totals	24	17	1	5	7	54	44	100

Legend:			
%	Efficiency	2M	2-Minute Suspensions
9m	9-metre Shots	AS	Assists
C	Center	EG	Empty Goal
G/S	Goals/Shots	Ind.	Individual
R7	Received 7-metre Fouls	R	Right
ST	Steals	TO/TF	Turnover/Technical Faults
Wing	Wing Shots	YC	Yellow Cards
2+2	2+2 Minute Suspensions	6m	6-metre Shots
Att. Dur.	Average Attack Duration	BS	Blocked Shots
FB	Fast Breaks	FTO	Fast Throw off
L	Left	P7	Penalty 7-metre Fouls
RC	Red Cards (Direct and after 3rd 2-Minute Suspension)	Prop %	Proportion of Shots
TOFB	Turnover during Fast Breaks	S/S	Saves/Shots
		TP	Time Played

OFFICIAL PARTNERS



EHF PARTNERS



NATIONAL SUPPLIERS



Match Team Statistics

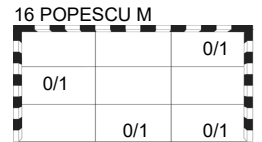
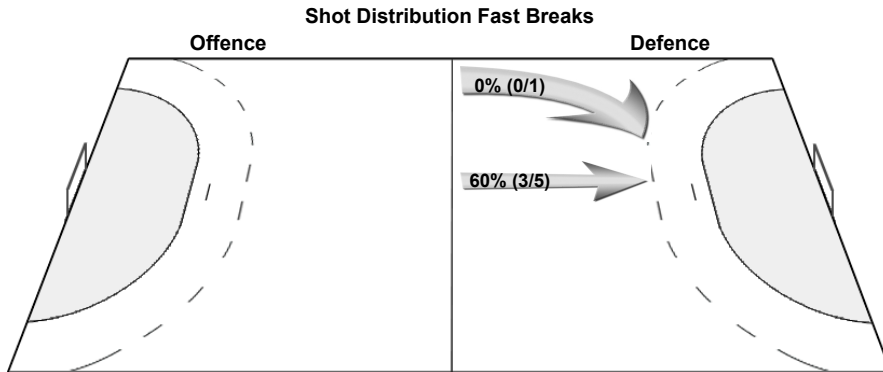
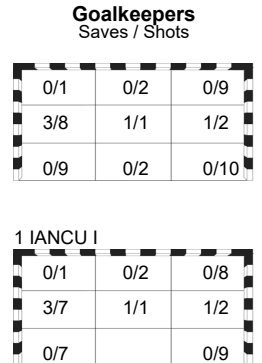
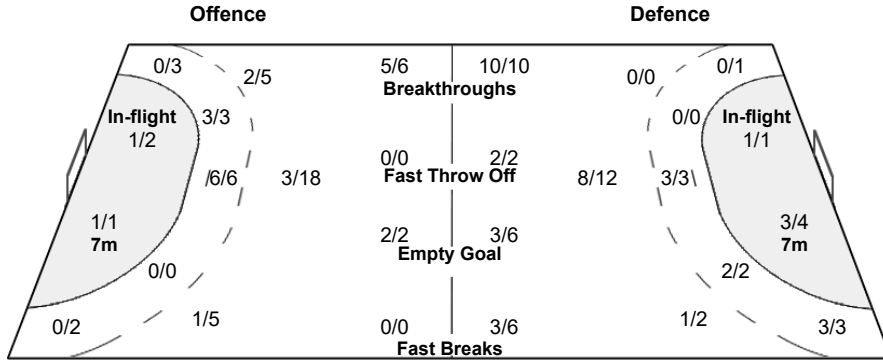
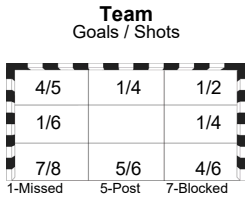
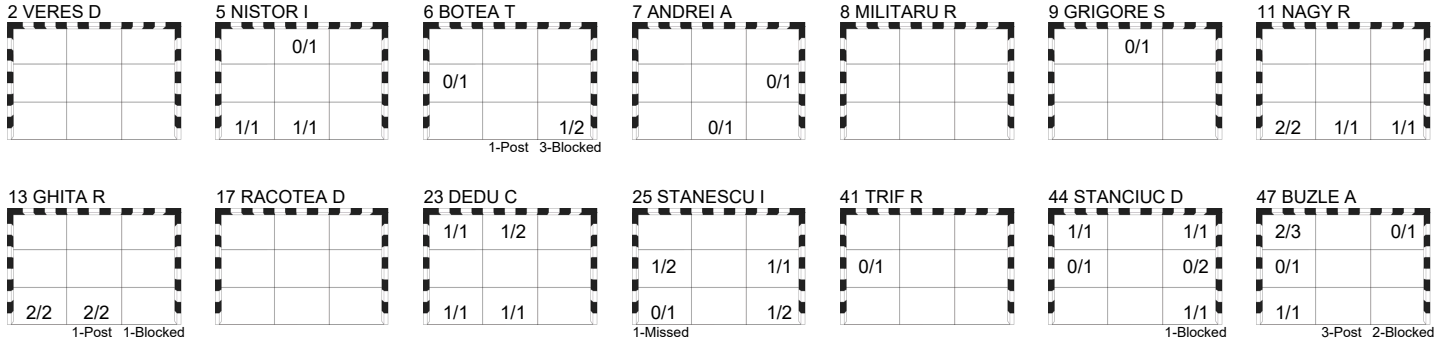
Match No: 9

ROU 24 - 39 DEN
(17 - 22) (7 - 17)

Referees: BARYSAS Tomas (LTU) / PETRUSIS Povilas (LTU)

ROU - Romania

Overview of Shot Distribution



OFFICIAL PARTNERS



EHF PARTNERS



NATIONAL SUPPLIERS



Match Team Statistics

Herning

Match No: 9

ROU 24 - 39 DEN
(17 - 22) (7 - 17)

Referees: BARYSAS Tomas (LTU) / PETRUSIS Povilas (LTU)

DEN - Denmark

Coach: JACOBSEN Nikolaj

Time outs: 2

No.	Name	Total		All Goals / Shots							Punishments				Offence			Defence			TP			
		G/S	%	7m	7m%	6m	Wing	BT	FB	FTO	9m	EG	YC	RC	2M	2+2	AS	R7	TO/TF	ST		BS	P7	
3	KIRKELOKKE Niclas																							
4	LANDIN Magnus	1/1	100				1/1										1							30:00
7	JAKOBSEN Emil	5/6	83	3/4	75		2/2																	24:46
11	LAUGE Rasmus	3/3	100			1/1				1/1	1/1						2	1		1				22:49
12	NIELSEN Emil																							
15	SAUGSTRUP Magnus	1/1	100							1/1							2	1			1	1		44:35
19	GIDSEL Mathias	9/13	69					7/7	0/2		0/2	2/2					5	2						53:59
20	MOLLER Kevin	0/1	0									0/1					1							55:58
25	JORGENSEN Lukas																							3:59
28	ANDERSSON Lasse	1/1	100								1/1													6:01
33	BERGHOLT Emil																					1		19:23
34	HALD Simon	0/1	0									0/1					1				1	5		30:52
38	HOXER Mads	8/11	73			2/2				2/3	1/1	3/5					1							56:28
43	PYTLICK Simon	8/9	89			3/3		2/2				3/4					3	1	1 / 1					33:32
49	ANDERSEN Frederik	0/1	0				0/1																	22:53
64	MOLLER Lasse	3/4	75					1/1			1/1	1/2												14:45
Totals		39/52	75	3/4	75	6/6	3/4	10/10	3/6	2/2	9/14	3/6						16	4	2 / 2	2	7	1	

No.	Name	Total		All Saves / Shots							FB	FTO	9m	9m%
		S/S	%	7m	7m%	Near Shots			6m	Wing				
						All	All%	6m	Wing	BT				
12	NIELSEN Emil													
20	MOLLER Kevin	17/39	44	0/1	0	5/20	25	0/10	4/4	1/6			12/18	67
EG		2												
Totals		17/41	41	0/1	0	5/20	25	0/10	4/4	1/6			12/18	67

Attacks

Team	All		Player Majority		Player Minority		Position Attacks		FB		Ind. FB		Team FB		Att. Dur. (min)	Turnover		
	G/Att.	%	G/Att.	%	G/Att.	%	G/Att.	%	G/Att.	%	G/Att.	%	G/Att.	%		All	%	TOFB
DEN	39/55	71	9/9	100			31/41	76	3/6	50			3/6	50	0:26	4	7	0

Team Shots

	Goals	Saves	Missed	Post	Blocked	Total	G/S %	Prop %
6m Shots	6					6	100	12
Wing Shots	3			1		4	75	8
L R	3			1		3	100	6 2
9m Shots	9	3	1		1	14	64	27
L C R	1 8	1 2	1		1	2 12	50 67	4 23 0
7m Penalty Throws	3	1				4	75	8
Fast Breaks	3	1	2			6	50	12
Breakthroughs	10					10	100	19
Fast Throw Offs	2					2	100	4
Empty Goals	3		3			6	50	12
Totals	39	5	6	1	1	52	75	100

Legend:			
%	Efficiency	2M	2-Minute Suspensions
9m	9-metre Shots	2+2	2+2 Minute Suspensions
C	Center	Att. Dur.	Average Attack Duration
G/S	Goals/Shots	AS	Assists
R7	Received 7-metre Fouls	EG	Empty Goal
ST	Steals	FB	Fast Breaks
Wing	Wing Shots	FTO	Fast Throw off
		Ind.	Individual
		L	Left
		P7	Penalty 7-metre Fouls
		R	Right
		RC	Red Cards (Direct and after 3rd 2-Minute Suspension)
		TO/TF	Turnover/Technical Fouls
		TOFB	Turnover during Fast Breaks
		7m	7-metre Penalty Shots
		BT	Breakthroughs
		G/Att.	Goals/Attacks
		Prop %	Proportion of Shots
		S/S	Saves/Shots
		TP	Time Played

OFFICIAL PARTNERS



EHF PARTNERS



NATIONAL SUPPLIERS



Play by Play

Match No: 9

ROU 24 - 39 DEN

(17 - 22) (7 - 17)

Referees: BARYSAS Tomas (LTU) / PETRUSIS Povilas (LTU)

ROU	1 IANCU Ionut	2 VERES Denis	5 NISTOR Ionut	A GEORGESCU Ionut-Stefan
	6 BOTEA Tudor	7 ANDREI Alexandru	8 MILITARU Robert	B BURICEA George
	9 GRIGORE Sorin	11 NAGY Robert	13 GHITA Radu	C STANESCU Rudi
	16 POPESCU Mihai	17 RACOTEA Dan	23 DEDU Calin	D CIOCOIU Florin
	25 STANESCU Ionut	41 TRIF Razvan	44 STANCIUC Daniel	F GIGIU Cristinel
	47 BUZLE Andrei			
DEN	3 KIRKELOKKE Niclas	4 LANDIN Magnus	7 JAKOBSEN Emil	A VILHELMSSEN Keld
	11 LAUGE Rasmus	12 NIELSEN Emil	15 SAUGSTRUP Magnus	B JACOBSEN Nikolaj
	19 GIDSEL Mathias	20 MOLLER Kevin	25 JORGENSEN Lukas	C KRONBORG Henrik
	28 ANDERSSON Lasse	33 BERGHOLT Emil	34 HALD Simon	D GREVE Anja
	38 HOXER Mads	43 PYTLICK Simon	49 ANDERSEN Frederik	E BRUUN Michael
	64 MOLLER Lasse			

1st HALF

Match Time	ROU - Romania	Score	Lead	DEN - Denmark
0:00	1 IANCU I Goalkeeper			20 MOLLER K Goalkeeper
0:30	13 GHITA R Goal centre 9m bottom left, 89.91 km/h	1 - 0	+1	
0:42				11 LAUGE R Turnover
1:08	13 GHITA R Goal centre 9m bottom left, 94.11 km/h	2 - 0	+2	
2:06	8 MILITARU R 7m caused			19 GIDSEL M 7m received
2:06	8 MILITARU R 2-minutes suspension			
2:06		2 - 1	+1	7 JAKOBSEN E Goal Penalty shot bottom left (19 GIDSEL M), 100.59 km/h
2:23	13 GHITA R for 1 IANCU I Empty goal			
2:42	47 BUZLE A Goal left 9m top left, 108.63 km/h	3 - 1	+2	
2:44	1 IANCU I for 13 GHITA R Goalkeeper back			
2:59				43 PYTLICK S for 20 MOLLER K Empty goal
3:04		3 - 2	+1	38 HOXER M Goal centre 6m middle left (19 GIDSEL M), 100.85 km/h
3:08				20 MOLLER K for 43 PYTLICK S Goalkeeper back
3:20	13 GHITA R for 1 IANCU I Empty goal			
3:38	47 BUZLE A Shot breakthrough saved top right			
3:43	1 IANCU I for 13 GHITA R Goalkeeper back			
3:55				43 PYTLICK S for 20 MOLLER K Empty goal
3:58				20 MOLLER K for 49 ANDERSEN F Goalkeeper back
3:58		3 - 3	0	7 JAKOBSEN E Goal left wing bottom right (43 PYTLICK S), 104.58 km/h
3:58	5 NISTOR I 2-minutes suspension			
4:18	9 GRIGORE S for 1 IANCU I Empty goal			
4:32	1 IANCU I for 9 GRIGORE S Goalkeeper back			
4:33	23 DEDU C Goal centre 6m bottom centre, 100.91 km/h	4 - 3	+1	
4:58		4 - 4	0	43 PYTLICK S Goal left 6m bottom left (19 GIDSEL M), 90.70 km/h
5:11	9 GRIGORE S for 1 IANCU I Empty goal			
5:30	44 STANCIUC D Goal breakthrough bottom right, 89.13 km/h	5 - 4	+1	
5:49	1 IANCU I for 7 ANDREI A Goalkeeper back			
5:51		5 - 5	0	43 PYTLICK S Goal breakthrough bottom right, 86.78 km/h
6:26	13 GHITA R Turnover			
6:35		5 - 6	-1	11 LAUGE R Goal centre 9m top right, 85.24 km/h
7:08	23 DEDU C 7m received			15 SAUGSTRUP M 7m caused
7:19	44 STANCIUC D Goal Penalty shot top left (23 DEDU C), 108.80 km/h	6 - 6	0	
8:20		6 - 7	-1	38 HOXER M Goal centre 9m bottom right, 104.99 km/h
9:23	47 BUZLE A Shot centre 9m post			
9:31		6 - 8	-2	38 HOXER M Goal fast break bottom left (15 SAUGSTRUP M), 88.49 km/h
10:22	13 GHITA R Shot centre 9m blocked			33 BERGHOLT E Block
10:39	47 BUZLE A Turnover			
10:49		6 - 9	-3	15 SAUGSTRUP M Goal fast break middle left (11 LAUGE R), 108.68 km/h

OFFICIAL PARTNERS



EHF PARTNERS



NATIONAL SUPPLIERS



Play by Play

Match No: 9

ROU 24 - 39 DEN

(17 - 22) (7 - 17)

1st HALF

Match Time	ROU - Romania	Score	Lead	DEN - Denmark
11:16	47 BUZLE A Goal flying throw top left (13 GHITA R), 93.72 km/h	7 - 9	-2	
11:26		7 - 10	-3	11 LAUGE R Goal fast throw off top right, 98.54 km/h
12:00	5 NISTOR I Shot right wing saved top centre			
12:08				38 HOXER M Shot fast break saved middle centre
12:16	23 DEDU C Goal right 6m bottom left (13 GHITA R), 94.53 km/h	8 - 10	-2	
12:47		8 - 11	-3	43 PYTLICK S Goal centre 9m bottom left, 105.81 km/h
13:22	23 DEDU C Goal centre 6m top left (13 GHITA R), 88.32 km/h	9 - 11	-2	
13:36		9 - 12	-3	11 LAUGE R Goal centre 6m top left (15 SAUGSTRUP M), 108.94 km/h
14:32	44 STANCIUC D Shot centre 9m saved middle right			
14:40				19 GIDSEL M Shot centre 9m saved middle left
15:12	25 STANESCU I Shot right 9m saved middle left			
16:11		9 - 13	-4	43 PYTLICK S Goal centre 9m bottom left, 85.53 km/h
16:34	Team timeout			
17:04	25 STANESCU I Goal right 9m bottom right, 115.13 km/h	10 - 13	-3	
17:35		10 - 14	-4	43 PYTLICK S Goal centre 6m bottom right (11 LAUGE R), 93.96 km/h
18:07	47 BUZLE A Shot centre 9m saved middle left			
18:13				19 GIDSEL M Shot fast break missed
18:24	1 IANCU I Turnover			
18:48	8 MILITARU R 7m caused			15 SAUGSTRUP M 7m received
19:07				7 JAKOBSEN E Penalty shot saved middle left
19:44	5 NISTOR I for 1 IANCU I Empty goal			
19:57	25 STANESCU I Turnover			11 LAUGE R Steal
20:03	1 IANCU I for 5 NISTOR I Goalkeeper back			
20:09				19 GIDSEL M Shot fast break missed
20:24	5 NISTOR I for 1 IANCU I Empty goal			
20:43	47 BUZLE A Goal breakthrough bottom left, 70.73 km/h	11 - 14	-3	
20:48	1 IANCU I for 25 STANESCU I Goalkeeper back			
21:11		11 - 15	-4	19 GIDSEL M Goal breakthrough top right, 77.41 km/h
21:26	25 STANESCU I for 1 IANCU I Empty goal			
21:40	47 BUZLE A Shot flying throw post			
21:55	1 IANCU I for 44 STANCIUC D Goalkeeper back			
22:25		11 - 16	-5	19 GIDSEL M Goal breakthrough middle left, 91.81 km/h
22:38	25 STANESCU I for 1 IANCU I Empty goal			
22:58	25 STANESCU I Goal right 9m middle right, 111.76 km/h	12 - 16	-4	
23:01	1 IANCU I for 44 STANCIUC D Goalkeeper back			
23:09		12 - 17	-5	43 PYTLICK S Goal centre 9m top right, 102.35 km/h
23:30	25 STANESCU I for 1 IANCU I Empty goal			
23:47	5 NISTOR I Goal right 6m bottom left (25 STANESCU I), 97.61 km/h	13 - 17	-4	
23:49	1 IANCU I for 44 STANCIUC D Goalkeeper back			
24:11				43 PYTLICK S Shot left 9m saved middle left
24:26	25 STANESCU I for 1 IANCU I Empty goal			
24:40	11 NAGY R Goal centre 6m bottom left (25 STANESCU I), 61.79 km/h	14 - 17	-3	
24:41	1 IANCU I for 44 STANCIUC D Goalkeeper back			
24:51		14 - 18	-4	43 PYTLICK S Goal breakthrough bottom right (20 MOLLER K), 114.50 km/h
25:04	44 STANCIUC D for 1 IANCU I Empty goal			
25:24	25 STANESCU I Shot right 9m saved bottom left			
25:41		14 - 19	-5	19 GIDSEL M Goal empty goal bottom centre, 108.04 km/h
25:42	1 IANCU I for 44 STANCIUC D Goalkeeper back			
26:04	44 STANCIUC D for 1 IANCU I Empty goal			
26:04	1 IANCU I for 44 STANCIUC D Goalkeeper back			
26:04	47 BUZLE A Technical Fault			
26:08				Team timeout

OFFICIAL PARTNERS



EHF PARTNERS



NATIONAL SUPPLIERS



Play by Play

ROU 24 - 39 DEN

(17 - 22) (7 - 17)

1st HALF

Match Time	ROU - Romania	Score	Lead	DEN - Denmark
26:08				34 HALD S for 20 MOLLER K Empty goal
26:23	8 MILITARU R 2-minutes suspension			
26:32		14 - 20	-6	19 GIDSEL M Goal breakthrough bottom right, 96.99 km/h
26:39	11 NAGY R Goal empty goal bottom centre, 61.59 km/h	15 - 20	-5	
26:41				20 MOLLER K for 34 HALD S Goalkeeper back
26:49				34 HALD S for 20 MOLLER K Empty goal
27:10	5 NISTOR I 7m caused			43 PYTLICK S 7m received
27:16				20 MOLLER K for 38 HOXER M Goalkeeper back
27:16		15 - 21	-6	7 JAKOBSEN E Goal Penalty shot top centre (43 PYTLICK S), 24.55 km/h
27:36	25 STANESCU I for 1 IANCU I Empty goal			
28:04	23 DEDU C Goal centre 6m top centre (47 BUZLE A), 86.26 km/h	16 - 21	-5	
28:06	1 IANCU I for 44 STANCIUC D Goalkeeper back			
28:22				43 PYTLICK S for 20 MOLLER K Empty goal
28:23				43 PYTLICK S Technical Fault
28:31	5 NISTOR I Goal empty goal bottom centre, 76.15 km/h	17 - 21	-4	
28:32				20 MOLLER K for 43 PYTLICK S Goalkeeper back
28:32				43 PYTLICK S for 20 MOLLER K Empty goal
28:45				20 MOLLER K for 34 HALD S Goalkeeper back
28:58		17 - 22	-5	7 JAKOBSEN E Goal left wing top right (43 PYTLICK S), 112.17 km/h
29:09	25 STANESCU I for 1 IANCU I Empty goal			
29:48	47 BUZLE A Shot left 9m blocked			34 HALD S Block
29:50	1 IANCU I for 23 DEDU C Goalkeeper back			
30:00	23 DEDU C Shot direct free throw saved top centre			

2nd HALF

Match Time	ROU - Romania	Score	Lead	DEN - Denmark
30:00	1 IANCU I Goalkeeper			20 MOLLER K Goalkeeper
30:37		17 - 23	-6	43 PYTLICK S Goal left 6m bottom left, 83.06 km/h
31:14	6 BOTEAT Shot centre 9m blocked			15 SAUGSTRUP M Block
31:34	Video Replay (Goal review) No Goal			
31:34	13 GHITA R Shot right wing post			
32:20				43 PYTLICK S Turnover
32:56	13 GHITA R Goal breakthrough bottom centre, 62.94 km/h	18 - 23	-5	
33:25	11 NAGY R 7m caused			19 GIDSEL M 7m received
33:37		18 - 24	-6	7 JAKOBSEN E Goal Penalty shot bottom right (19 GIDSEL M), 101.72 km/h
34:36	6 BOTEAT Shot centre 9m post			
34:43		18 - 25	-7	38 HOXER M Goal fast break bottom right, 90.09 km/h
35:17	44 STANCIUC D Shot centre 9m saved middle right			
35:27		18 - 26	-8	19 GIDSEL M Goal breakthrough top centre, 26.37 km/h
36:02	6 BOTEAT Shot centre 9m blocked			34 HALD S Block
36:25	6 BOTEAT Shot centre 9m saved bottom right			
37:32	8 MILITARU R Block			19 GIDSEL M Shot centre 9m blocked
37:45		18 - 27	-9	38 HOXER M Goal flying throw top right (4 LANDIN M), 80.88 km/h
38:52	6 BOTEAT Shot centre 9m blocked			34 HALD S Block
39:07	6 BOTEAT Shot centre 9m saved middle left			
40:12		18 - 28	-10	19 GIDSEL M Goal breakthrough middle right, 95.70 km/h
40:24	11 NAGY R for 1 IANCU I Empty goal			
40:46	44 STANCIUC D Turnover			34 HALD S Steal
40:52		18 - 29	-11	19 GIDSEL M Goal empty goal bottom left (34 HALD S), 103.60 km/h
40:53	1 IANCU I for 47 BUZLE A Goalkeeper back			

OFFICIAL PARTNERS



EHF PARTNERS



NATIONAL SUPPLIERS



Play by Play

Match No: 9

ROU 24 - 39 DEN

(17 - 22) (7 - 17)

2nd HALF

Match Time	ROU - Romania	Score	Lead	DEN - Denmark
40:53	Team timeout			
40:53	47 BUZLE A for 1 IANCU I Empty goal			
41:17	47 BUZLE A Shot centre 9m blocked			34 HALD S Block
41:41	13 GHITA R Goal right 6m bottom centre (47 BUZLE A), 59.81 km/h	19 - 29	-10	
41:42	1 IANCU I for 44 STANCIUC D Goalkeeper back			
42:23				38 HOXER M Shot centre 9m missed
42:33	44 STANCIUC D for 1 IANCU I Empty goal			
42:55	1 IANCU I for 44 STANCIUC D Goalkeeper back			
42:55	7 ANDREI A Shot left wing saved middle right			
43:22		19 - 30	-11	19 GIDSEL M Goal breakthrough middle left, 102.33 km/h
43:38	44 STANCIUC D for 1 IANCU I Empty goal			
44:00	47 BUZLE A Shot left 9m saved top left			
44:03	1 IANCU I for 44 STANCIUC D Goalkeeper back			
44:48				49 ANDERSEN F Shot right wing post
44:58	23 DEDU C for 1 IANCU I Empty goal			
45:18	1 IANCU I for 47 BUZLE A Goalkeeper back			
45:18	44 STANCIUC D Technical Fault			
45:30				Team timeout
45:36				64 MOLLER L for 20 MOLLER K Empty goal
45:49		19 - 31	-12	4 LANDIN M Goal left wing top right (38 HOXER M)
45:52				20 MOLLER K for 34 HALD S Goalkeeper back
46:05	47 BUZLE A for 1 IANCU I Empty goal			
46:31	47 BUZLE A Shot left 9m post			
46:39				64 MOLLER L Shot empty goal missed
46:40	1 IANCU I for 47 BUZLE A Goalkeeper back			
46:52	23 DEDU C for 1 IANCU I Empty goal			
47:09	1 IANCU I for 47 BUZLE A Goalkeeper back			
47:09	9 GRIGORE S Shot right wing saved top centre			
47:29				34 HALD S for 20 MOLLER K Empty goal
47:57				20 MOLLER K for 34 HALD S Goalkeeper back
47:57				38 HOXER M Shot centre 9m saved middle right
48:17	25 STANESCU I for 1 IANCU I Empty goal			
48:27	44 STANCIUC D Goal breakthrough top right	20 - 31	-11	
48:29	1 IANCU I for 47 BUZLE A Goalkeeper back			
48:44				49 ANDERSEN F for 20 MOLLER K Empty goal
48:58		20 - 32	-12	64 MOLLER L Goal left 9m bottom right, 99.80 km/h
49:00				20 MOLLER K for 34 HALD S Goalkeeper back
49:09	47 BUZLE A for 1 IANCU I Empty goal			
49:29	1 IANCU I for 47 BUZLE A Goalkeeper back			
49:30	25 STANESCU I Shot right 9m saved bottom right			
49:35				34 HALD S for 20 MOLLER K Empty goal
49:47		20 - 33	-13	64 MOLLER L Goal breakthrough bottom left, 59.16 km/h
49:52				20 MOLLER K for 49 ANDERSEN F Goalkeeper back
50:32	44 STANCIUC D Shot centre 9m saved middle left			
50:40	11 NAGY R Goal centre 6m bottom left, 86.62 km/h	21 - 33	-12	
50:53				49 ANDERSEN F for 20 MOLLER K Empty goal
50:58				20 MOLLER K for 33 BERGHOLT E Goalkeeper back
51:00	41 TRIF R 2-minutes suspension			
51:12		21 - 34	-13	19 GIDSEL M Goal breakthrough top right, 92.68 km/h
51:26	44 STANCIUC D for 1 IANCU I Empty goal			
52:08	25 STANESCU I Turnover			
52:21		21 - 35	-14	64 MOLLER L Goal empty goal bottom left (19 GIDSEL M)

OFFICIAL PARTNERS



EHF PARTNERS



NATIONAL SUPPLIERS



Match No: 9

Play by Play
ROU 24 - 39 DEN
(17 - 22) (7 - 17)

2nd HALF

Match Time	ROU - Romania	Score	Lead	DEN - Denmark
52:22	1 IANCU I for 6 BOTEAN T Goalkeeper back			
52:25	6 BOTEAN T for 1 IANCU I Empty goal			
52:59	6 BOTEAN T Goal breakthrough bottom right, 64.44 km/h	22 - 35	-13	
53:06	16 POPESCU M for 44 STANCIUC D Goalkeeper back			
53:07		22 - 36	-14	38 HOXER M Goal fast throw off bottom right, 67.25 km/h
53:23	11 NAGY R for 16 POPESCU M Empty goal			
53:30	16 POPESCU M for 1 IANCU I Goalkeeper Substitution			
53:38	6 BOTEAN T for 16 POPESCU M Empty goal			
54:13	11 NAGY R Goal centre 6m bottom right (44 STANCIUC D)	23 - 36	-13	
54:22				34 HALD S Shot empty goal missed
54:25	16 POPESCU M for 6 BOTEAN T Goalkeeper back			
54:36	41 TRIF R for 16 POPESCU M Empty goal			
55:02	44 STANCIUC D Shot centre 9m blocked			34 HALD S Block
55:07				20 MOLLER K Shot empty goal missed
55:09	16 POPESCU M for 41 TRIF R Goalkeeper back			
55:19	41 TRIF R for 16 POPESCU M Empty goal			
55:45	41 TRIF R Shot left 9m saved middle left			
55:49	16 POPESCU M for 44 STANCIUC D Goalkeeper back			
56:13				33 BERGHOLT E for 20 MOLLER K Empty goal
56:25		23 - 37	-14	38 HOXER M Goal centre 9m bottom centre, 94.53 km/h
56:32				20 MOLLER K for 33 BERGHOLT E Goalkeeper back
57:20	25 STANESCU I Goal centre 9m middle left, 99.38 km/h	24 - 37	-13	
57:35				49 ANDERSEN F for 20 MOLLER K Empty goal
57:46				20 MOLLER K for 33 BERGHOLT E Goalkeeper back
57:48		24 - 38	-14	38 HOXER M Goal centre 9m top right, 112.33 km/h
58:29	7 ANDREI A Shot left wing saved bottom centre			
58:39				49 ANDERSEN F for 20 MOLLER K Empty goal
58:58				20 MOLLER K for 33 BERGHOLT E Goalkeeper back
59:03				64 MOLLER L Technical Fault
59:31	25 STANESCU I Shot centre 9m missed			
59:43				49 ANDERSEN F for 20 MOLLER K Empty goal
59:59				20 MOLLER K for 33 BERGHOLT E Goalkeeper back
59:59		24 - 39	-15	28 ANDERSSON L Goal centre 9m middle left, 108.92 km/h

OFFICIAL PARTNERS



EHF PARTNERS



NATIONAL SUPPLIERS



Empty Goal Analysis

Herning

Match No: 9

ROU 24 - 39 DEN

(17 - 22) (7 - 17)

Referees: BARYSAS Tomas (LTU) / PETRUSIS Povilas (LTU)

ATTACKS DURING OWN EMPTY GOAL SITUATION

Players on Court	Attacks		Goals		Saves		Missed		Blocked		Post		Turnovers		Scoring Efficiency		Goals Against	
	ROU	DEN	ROU	DEN	ROU	DEN	ROU	DEN	ROU	DEN	ROU	DEN	ROU	DEN	ROU	DEN	ROU	DEN
7 Against 6	20	9	7	6	6	1			3		2		4	2	35	67	2	1
6 Against 6	7		5		1								1		71		1	
Others		4		4												100		1
Total:	27	13	12	10	7	1			3		2		5	2	44	77	3	2

GOALS/ATTACKS DURING OWN EMPTY GOAL SITUATION - ANALYSIS OF OCCURRENCE (in 5 min intervals)

Players on Court	1st Half											
	0-5		5-10		10-15		15-20		20-25		25-30	
	ROU	DEN	ROU	DEN	ROU	DEN	ROU	DEN	ROU	DEN	ROU	DEN
7 Against 6							0/1		4/5		0/2	0/1
6 Against 6	2/3		1/1								1/1	
Others		2/2										2/2
Total:	2/3	2/2	1/1				0/1		4/5		1/3	2/3

Players on Court	2nd Half											
	30-35		35-40		40-45		45-50		50-55		55-60	
	ROU	DEN	ROU	DEN	ROU	DEN	ROU	DEN	ROU	DEN	ROU	DEN
7 Against 6					1/4		1/5	3/4	1/1		0/2	3/4
6 Against 6									1/2			
Others												
Total:					1/4		1/5	3/4	2/3		0/2	3/4

GOALS/ATTACKS DURING OWN EMPTY GOAL SITUATION - ANALYSIS BY DURATION

Team	<15 sec.	15-30 sec.	30-45 sec.	45-60 sec.	>60 sec.
ROU	2/5	7/18	2/3	1/1	
DEN	7/8	3/5			

SUBSTITUTION SUMMARY

Players	ROU	DEN
Goalkeeper <-> Goalkeeper	1	0
Court Player <-> Goalkeeper	57	30
Court Player <-> Court Player	101	66
Total:	159	96

OFFICIAL PARTNERS



EHF PARTNERS



NATIONAL SUPPLIERS



Line-Up Analysis

Herning

Attendance: 14.535

Match No: 9

ROU 24 - 39 DEN

ROU - Romania

Lineup efficiency							Time Played	GF	GA
1 IANCU I	2 VERES D	5 NISTOR I	8 MILITARU R	11 NAGY R	23 DEDU C	47 BUZLE A	4:51	2	7
1 IANCU I	2 VERES D	5 NISTOR I	9 GRIGORE S	23 DEDU C	44 STANCIUC D	47 BUZLE A	3:40	0	4
1 IANCU I	2 VERES D	5 NISTOR I	13 GHITA R	23 DEDU C	44 STANCIUC D	47 BUZLE A	3:19	4	0
2 VERES D	5 NISTOR I	11 NAGY R	23 DEDU C	25 STANESCU I	44 STANCIUC D	47 BUZLE A	3:09	4	1
1 IANCU I	7 ANDREI A	8 MILITARU R	9 GRIGORE S	11 NAGY R	13 GHITA R	17 RACOTEA D	3:02	0	2
1 IANCU I	6 BOTE A T	7 ANDREI A	9 GRIGORE S	13 GHITA R	23 DEDU C	44 STANCIUC D	2:51	0	0
5 NISTOR I	7 ANDREI A	11 NAGY R	16 POPESCU M	23 DEDU C	25 STANESCU I	41 TRIF R	2:50	0	3
7 ANDREI A	9 GRIGORE S	11 NAGY R	13 GHITA R	23 DEDU C	44 STANCIUC D	47 BUZLE A	2:18	1	1
1 IANCU I	7 ANDREI A	8 MILITARU R	9 GRIGORE S	13 GHITA R	17 RACOTEA D	23 DEDU C	2:17	0	3
1 IANCU I	2 VERES D	11 NAGY R	17 RACOTEA D	23 DEDU C	25 STANESCU I	47 BUZLE A	2:04	1	0
1 IANCU I	2 VERES D	5 NISTOR I	8 MILITARU R	17 RACOTEA D	23 DEDU C	47 BUZLE A	1:44	0	3
1 IANCU I	6 BOTE A T	7 ANDREI A	9 GRIGORE S	11 NAGY R	13 GHITA R	44 STANCIUC D	1:30	1	1
1 IANCU I	2 VERES D	8 MILITARU R	11 NAGY R	17 RACOTEA D	23 DEDU C	47 BUZLE A	1:25	0	1
5 NISTOR I	7 ANDREI A	16 POPESCU M	23 DEDU C	25 STANESCU I	41 TRIF R	44 STANCIUC D	1:21	1	0
1 IANCU I	2 VERES D	5 NISTOR I	8 MILITARU R	13 GHITA R	23 DEDU C	47 BUZLE A	1:19	1	2
1 IANCU I	2 VERES D	8 MILITARU R	17 RACOTEA D	23 DEDU C	25 STANESCU I	47 BUZLE A	1:17	0	1
5 NISTOR I	6 BOTE A T	7 ANDREI A	23 DEDU C	25 STANESCU I	41 TRIF R	44 STANCIUC D	1:09	1	1
5 NISTOR I	7 ANDREI A	11 NAGY R	23 DEDU C	25 STANESCU I	41 TRIF R	44 STANCIUC D	1:03	0	0
1 IANCU I	7 ANDREI A	8 MILITARU R	9 GRIGORE S	11 NAGY R	13 GHITA R	47 BUZLE A	1:01	0	1
1 IANCU I	6 BOTE A T	7 ANDREI A	8 MILITARU R	9 GRIGORE S	11 NAGY R	13 GHITA R	1:00	0	1
1 IANCU I	7 ANDREI A	9 GRIGORE S	11 NAGY R	23 DEDU C	25 STANESCU I	41 TRIF R	1:00	0	2
5 NISTOR I	6 BOTE A T	7 ANDREI A	11 NAGY R	23 DEDU C	25 STANESCU I	44 STANCIUC D	0:54	1	0
1 IANCU I	7 ANDREI A	9 GRIGORE S	11 NAGY R	13 GHITA R	23 DEDU C	47 BUZLE A	0:48	0	0
1 IANCU I	2 VERES D	5 NISTOR I	11 NAGY R	23 DEDU C	25 STANESCU I	47 BUZLE A	0:45	0	0
2 VERES D	5 NISTOR I	8 MILITARU R	13 GHITA R	23 DEDU C	44 STANCIUC D	47 BUZLE A	0:44	1	0
1 IANCU I	6 BOTE A T	7 ANDREI A	9 GRIGORE S	11 NAGY R	25 STANESCU I	41 TRIF R	0:44	0	1
1 IANCU I	8 MILITARU R	9 GRIGORE S	11 NAGY R	13 GHITA R	23 DEDU C	47 BUZLE A	0:40	0	0
1 IANCU I	2 VERES D	5 NISTOR I	7 ANDREI A	17 RACOTEA D	23 DEDU C	47 BUZLE A	0:39	1	1
1 IANCU I	2 VERES D	9 GRIGORE S	13 GHITA R	23 DEDU C	44 STANCIUC D	47 BUZLE A	0:36	1	0
7 ANDREI A	8 MILITARU R	9 GRIGORE S	11 NAGY R	13 GHITA R	17 RACOTEA D	47 BUZLE A	0:35	0	0
1 IANCU I	2 VERES D	5 NISTOR I	13 GHITA R	17 RACOTEA D	23 DEDU C	47 BUZLE A	0:34	0	1
1 IANCU I	7 ANDREI A	9 GRIGORE S	11 NAGY R	13 GHITA R	17 RACOTEA D	23 DEDU C	0:34	0	0
2 VERES D	5 NISTOR I	8 MILITARU R	23 DEDU C	25 STANESCU I	44 STANCIUC D	47 BUZLE A	0:30	1	0
1 IANCU I	6 BOTE A T	7 ANDREI A	9 GRIGORE S	11 NAGY R	25 STANESCU I	44 STANCIUC D	0:28	1	0
5 NISTOR I	6 BOTE A T	7 ANDREI A	11 NAGY R	23 DEDU C	41 TRIF R	44 STANCIUC D	0:28	0	0
2 VERES D	5 NISTOR I	7 ANDREI A	9 GRIGORE S	23 DEDU C	44 STANCIUC D	47 BUZLE A	0:27	1	0
1 IANCU I	7 ANDREI A	8 MILITARU R	9 GRIGORE S	11 NAGY R	13 GHITA R	23 DEDU C	0:27	0	0
1 IANCU I	2 VERES D	5 NISTOR I	8 MILITARU R	23 DEDU C	44 STANCIUC D	47 BUZLE A	0:26	0	0
1 IANCU I	2 VERES D	5 NISTOR I	9 GRIGORE S	17 RACOTEA D	23 DEDU C	47 BUZLE A	0:26	0	1
1 IANCU I	2 VERES D	5 NISTOR I	9 GRIGORE S	13 GHITA R	23 DEDU C	47 BUZLE A	0:24	0	0
5 NISTOR I	7 ANDREI A	11 NAGY R	16 POPESCU M	23 DEDU C	25 STANESCU I	44 STANCIUC D	0:21	0	0
2 VERES D	5 NISTOR I	11 NAGY R	17 RACOTEA D	23 DEDU C	25 STANESCU I	47 BUZLE A	0:19	0	0
1 IANCU I	7 ANDREI A	9 GRIGORE S	11 NAGY R	13 GHITA R	23 DEDU C	44 STANCIUC D	0:19	0	0
2 VERES D	5 NISTOR I	7 ANDREI A	9 GRIGORE S	17 RACOTEA D	23 DEDU C	47 BUZLE A	0:16	0	0
1 IANCU I	2 VERES D	8 MILITARU R	13 GHITA R	17 RACOTEA D	23 DEDU C	47 BUZLE A	0:15	0	0
7 ANDREI A	9 GRIGORE S	11 NAGY R	23 DEDU C	25 STANESCU I	41 TRIF R	47 BUZLE A	0:14	0	0
1 IANCU I	7 ANDREI A	8 MILITARU R	9 GRIGORE S	11 NAGY R	13 GHITA R	44 STANCIUC D	0:12	0	0
7 ANDREI A	8 MILITARU R	9 GRIGORE S	11 NAGY R	13 GHITA R	17 RACOTEA D	23 DEDU C	0:12	0	0
7 ANDREI A	9 GRIGORE S	11 NAGY R	23 DEDU C	25 STANESCU I	44 STANCIUC D	47 BUZLE A	0:12	1	0
1 IANCU I	7 ANDREI A	9 GRIGORE S	13 GHITA R	17 RACOTEA D	23 DEDU C	44 STANCIUC D	0:11	0	0
1 IANCU I	7 ANDREI A	9 GRIGORE S	11 NAGY R	23 DEDU C	25 STANESCU I	44 STANCIUC D	0:11	0	0
1 IANCU I	2 VERES D	5 NISTOR I	11 NAGY R	25 STANESCU I	44 STANCIUC D	47 BUZLE A	0:10	0	0
2 VERES D	5 NISTOR I	8 MILITARU R	9 GRIGORE S	17 RACOTEA D	23 DEDU C	47 BUZLE A	0:09	0	0
1 IANCU I	2 VERES D	5 NISTOR I	17 RACOTEA D	23 DEDU C	25 STANESCU I	47 BUZLE A	0:09	0	0

OFFICIAL PARTNERS



EHF PARTNERS



NATIONAL SUPPLIERS



Preliminary Round - Group B

Line-Up Analysis

Herning

Attendance: 14.535

Match No: 9

ROU 24 - 39 DEN

ROU - Romania

Lineup efficiency							Time Played	GF	GA
5 NISTOR I	6 BOTE A T	7 ANDREI A	16 POPESCU M	23 DEDU C	25 STANESCU I	41 TRIF R	0:09	0	1
1 IANCU I	7 ANDREI A	8 MILITARU R	9 GRIGORE S	13 GHITA R	23 DEDU C	44 STANCIUC D	0:08	0	0
5 NISTOR I	6 BOTE A T	7 ANDREI A	16 POPESCU M	23 DEDU C	25 STANESCU I	44 STANCIUC D	0:08	0	0
7 ANDREI A	9 GRIGORE S	11 NAGY R	13 GHITA R	17 RACOTE A D	23 DEDU C	44 STANCIUC D	0:07	0	0
1 IANCU I	2 VERES D	5 NISTOR I	23 DEDU C	25 STANESCU I	44 STANCIUC D	47 BUZLE A	0:06	0	0
1 IANCU I	2 VERES D	5 NISTOR I	8 MILITARU R	23 DEDU C	25 STANESCU I	47 BUZLE A	0:06	0	0
7 ANDREI A	9 GRIGORE S	23 DEDU C	25 STANESCU I	41 TRIF R	44 STANCIUC D	47 BUZLE A	0:06	0	0
1 IANCU I	7 ANDREI A	9 GRIGORE S	23 DEDU C	25 STANESCU I	41 TRIF R	44 STANCIUC D	0:06	0	0
1 IANCU I	2 VERES D	5 NISTOR I	11 NAGY R	23 DEDU C	44 STANCIUC D	47 BUZLE A	0:05	0	0
7 ANDREI A	9 GRIGORE S	11 NAGY R	13 GHITA R	17 RACOTE A D	23 DEDU C	47 BUZLE A	0:05	0	0
1 IANCU I	2 VERES D	5 NISTOR I	17 RACOTE A D	23 DEDU C	44 STANCIUC D	47 BUZLE A	0:04	0	0
1 IANCU I	6 BOTE A T	7 ANDREI A	9 GRIGORE S	11 NAGY R	23 DEDU C	41 TRIF R	0:04	0	0
1 IANCU I	5 NISTOR I	6 BOTE A T	7 ANDREI A	11 NAGY R	23 DEDU C	41 TRIF R	0:04	0	0
1 IANCU I	5 NISTOR I	7 ANDREI A	23 DEDU C	25 STANESCU I	41 TRIF R	44 STANCIUC D	0:03	0	0
1 IANCU I	2 VERES D	13 GHITA R	17 RACOTE A D	23 DEDU C	25 STANESCU I	47 BUZLE A	0:02	0	0

Score development							Time Played	G Diff.
1 IANCU I	2 VERES D	5 NISTOR I	13 GHITA R	23 DEDU C	44 STANCIUC D	47 BUZLE A	3:19	+4
2 VERES D	5 NISTOR I	11 NAGY R	23 DEDU C	25 STANESCU I	44 STANCIUC D	47 BUZLE A	3:09	+3
7 ANDREI A	9 GRIGORE S	11 NAGY R	23 DEDU C	25 STANESCU I	44 STANCIUC D	47 BUZLE A	0:12	+1
2 VERES D	5 NISTOR I	7 ANDREI A	9 GRIGORE S	23 DEDU C	44 STANCIUC D	47 BUZLE A	0:27	+1
1 IANCU I	6 BOTE A T	7 ANDREI A	9 GRIGORE S	11 NAGY R	25 STANESCU I	44 STANCIUC D	0:28	+1
2 VERES D	5 NISTOR I	8 MILITARU R	23 DEDU C	25 STANESCU I	44 STANCIUC D	47 BUZLE A	0:30	+1
1 IANCU I	2 VERES D	9 GRIGORE S	13 GHITA R	23 DEDU C	44 STANCIUC D	47 BUZLE A	0:36	+1
2 VERES D	5 NISTOR I	8 MILITARU R	13 GHITA R	23 DEDU C	44 STANCIUC D	47 BUZLE A	0:44	+1
5 NISTOR I	6 BOTE A T	7 ANDREI A	11 NAGY R	23 DEDU C	25 STANESCU I	44 STANCIUC D	0:54	+1
5 NISTOR I	7 ANDREI A	16 POPESCU M	23 DEDU C	25 STANESCU I	41 TRIF R	44 STANCIUC D	1:21	+1
1 IANCU I	2 VERES D	11 NAGY R	17 RACOTE A D	23 DEDU C	25 STANESCU I	47 BUZLE A	2:04	+1
1 IANCU I	2 VERES D	13 GHITA R	17 RACOTE A D	23 DEDU C	25 STANESCU I	47 BUZLE A	0:02	0
1 IANCU I	5 NISTOR I	7 ANDREI A	23 DEDU C	25 STANESCU I	41 TRIF R	44 STANCIUC D	0:03	0
1 IANCU I	2 VERES D	5 NISTOR I	17 RACOTE A D	23 DEDU C	44 STANCIUC D	47 BUZLE A	0:04	0
1 IANCU I	6 BOTE A T	7 ANDREI A	9 GRIGORE S	11 NAGY R	23 DEDU C	41 TRIF R	0:04	0
1 IANCU I	5 NISTOR I	6 BOTE A T	7 ANDREI A	11 NAGY R	23 DEDU C	41 TRIF R	0:04	0
1 IANCU I	2 VERES D	5 NISTOR I	11 NAGY R	23 DEDU C	44 STANCIUC D	47 BUZLE A	0:05	0
7 ANDREI A	9 GRIGORE S	11 NAGY R	13 GHITA R	17 RACOTE A D	23 DEDU C	47 BUZLE A	0:05	0
1 IANCU I	2 VERES D	5 NISTOR I	23 DEDU C	25 STANESCU I	44 STANCIUC D	47 BUZLE A	0:06	0
1 IANCU I	2 VERES D	5 NISTOR I	8 MILITARU R	23 DEDU C	25 STANESCU I	47 BUZLE A	0:06	0
7 ANDREI A	9 GRIGORE S	23 DEDU C	25 STANESCU I	41 TRIF R	44 STANCIUC D	47 BUZLE A	0:06	0
1 IANCU I	7 ANDREI A	9 GRIGORE S	23 DEDU C	25 STANESCU I	41 TRIF R	44 STANCIUC D	0:06	0
7 ANDREI A	9 GRIGORE S	11 NAGY R	13 GHITA R	17 RACOTE A D	23 DEDU C	44 STANCIUC D	0:07	0
1 IANCU I	7 ANDREI A	8 MILITARU R	9 GRIGORE S	13 GHITA R	23 DEDU C	44 STANCIUC D	0:08	0
5 NISTOR I	6 BOTE A T	7 ANDREI A	16 POPESCU M	23 DEDU C	25 STANESCU I	44 STANCIUC D	0:08	0
2 VERES D	5 NISTOR I	8 MILITARU R	9 GRIGORE S	17 RACOTE A D	23 DEDU C	47 BUZLE A	0:09	0
1 IANCU I	2 VERES D	5 NISTOR I	17 RACOTE A D	23 DEDU C	25 STANESCU I	47 BUZLE A	0:09	0
1 IANCU I	2 VERES D	5 NISTOR I	11 NAGY R	25 STANESCU I	44 STANCIUC D	47 BUZLE A	0:10	0
1 IANCU I	7 ANDREI A	9 GRIGORE S	13 GHITA R	17 RACOTE A D	23 DEDU C	44 STANCIUC D	0:11	0
1 IANCU I	7 ANDREI A	9 GRIGORE S	11 NAGY R	23 DEDU C	25 STANESCU I	44 STANCIUC D	0:11	0
1 IANCU I	7 ANDREI A	8 MILITARU R	9 GRIGORE S	11 NAGY R	13 GHITA R	44 STANCIUC D	0:12	0
7 ANDREI A	8 MILITARU R	9 GRIGORE S	11 NAGY R	13 GHITA R	17 RACOTE A D	23 DEDU C	0:12	0
7 ANDREI A	9 GRIGORE S	11 NAGY R	23 DEDU C	25 STANESCU I	41 TRIF R	47 BUZLE A	0:14	0
1 IANCU I	2 VERES D	8 MILITARU R	13 GHITA R	17 RACOTE A D	23 DEDU C	47 BUZLE A	0:15	0
2 VERES D	5 NISTOR I	7 ANDREI A	9 GRIGORE S	17 RACOTE A D	23 DEDU C	47 BUZLE A	0:16	0
2 VERES D	5 NISTOR I	11 NAGY R	17 RACOTE A D	23 DEDU C	25 STANESCU I	47 BUZLE A	0:19	0

OFFICIAL PARTNERS



EHF PARTNERS



NATIONAL SUPPLIERS



Line-Up Analysis

Herning

Attendance: 14.535

Match No: 9

ROU 24 - 39 DEN

ROU - Romania

Score development								Time Played	G Diff.
1 IANCU I	7 ANDREI A	9 GRIGORE S	11 NAGY R	13 GHITA R	23 DEDU C	44 STANCIUC D	44 STANCIUC D	0:19	0
5 NISTOR I	7 ANDREI A	11 NAGY R	16 POPESCU M	23 DEDU C	25 STANESCU I	44 STANCIUC D	44 STANCIUC D	0:21	0
1 IANCU I	2 VERES D	5 NISTOR I	9 GRIGORE S	13 GHITA R	23 DEDU C	47 BUZLE A	47 BUZLE A	0:24	0
1 IANCU I	2 VERES D	5 NISTOR I	8 MILITARU R	23 DEDU C	44 STANCIUC D	47 BUZLE A	47 BUZLE A	0:26	0
1 IANCU I	7 ANDREI A	8 MILITARU R	9 GRIGORE S	11 NAGY R	13 GHITA R	23 DEDU C	23 DEDU C	0:27	0
5 NISTOR I	6 BOTE A T	7 ANDREI A	11 NAGY R	23 DEDU C	41 TRIF R	44 STANCIUC D	44 STANCIUC D	0:28	0
1 IANCU I	7 ANDREI A	9 GRIGORE S	11 NAGY R	13 GHITA R	17 RACOTE A D	23 DEDU C	23 DEDU C	0:34	0
7 ANDREI A	8 MILITARU R	9 GRIGORE S	11 NAGY R	13 GHITA R	17 RACOTE A D	47 BUZLE A	47 BUZLE A	0:35	0
1 IANCU I	2 VERES D	5 NISTOR I	7 ANDREI A	17 RACOTE A D	23 DEDU C	47 BUZLE A	47 BUZLE A	0:39	0
1 IANCU I	8 MILITARU R	9 GRIGORE S	11 NAGY R	13 GHITA R	23 DEDU C	47 BUZLE A	47 BUZLE A	0:40	0
1 IANCU I	2 VERES D	5 NISTOR I	11 NAGY R	23 DEDU C	25 STANESCU I	47 BUZLE A	47 BUZLE A	0:45	0
1 IANCU I	7 ANDREI A	9 GRIGORE S	11 NAGY R	13 GHITA R	23 DEDU C	47 BUZLE A	47 BUZLE A	0:48	0
5 NISTOR I	7 ANDREI A	11 NAGY R	23 DEDU C	25 STANESCU I	41 TRIF R	44 STANCIUC D	44 STANCIUC D	1:03	0
5 NISTOR I	6 BOTE A T	7 ANDREI A	23 DEDU C	25 STANESCU I	41 TRIF R	44 STANCIUC D	44 STANCIUC D	1:09	0
1 IANCU I	6 BOTE A T	7 ANDREI A	9 GRIGORE S	11 NAGY R	13 GHITA R	44 STANCIUC D	44 STANCIUC D	1:30	0
7 ANDREI A	9 GRIGORE S	11 NAGY R	13 GHITA R	23 DEDU C	44 STANCIUC D	47 BUZLE A	47 BUZLE A	2:18	0
1 IANCU I	6 BOTE A T	7 ANDREI A	9 GRIGORE S	13 GHITA R	23 DEDU C	44 STANCIUC D	44 STANCIUC D	2:51	0
5 NISTOR I	6 BOTE A T	7 ANDREI A	16 POPESCU M	23 DEDU C	25 STANESCU I	41 TRIF R	41 TRIF R	0:09	-1
1 IANCU I	2 VERES D	5 NISTOR I	9 GRIGORE S	17 RACOTE A D	23 DEDU C	47 BUZLE A	47 BUZLE A	0:26	-1
1 IANCU I	2 VERES D	5 NISTOR I	13 GHITA R	17 RACOTE A D	23 DEDU C	47 BUZLE A	47 BUZLE A	0:34	-1
1 IANCU I	6 BOTE A T	7 ANDREI A	9 GRIGORE S	11 NAGY R	25 STANESCU I	41 TRIF R	41 TRIF R	0:44	-1
1 IANCU I	6 BOTE A T	7 ANDREI A	8 MILITARU R	9 GRIGORE S	11 NAGY R	13 GHITA R	13 GHITA R	1:00	-1
1 IANCU I	7 ANDREI A	8 MILITARU R	9 GRIGORE S	11 NAGY R	13 GHITA R	47 BUZLE A	47 BUZLE A	1:01	-1
1 IANCU I	2 VERES D	8 MILITARU R	17 RACOTE A D	23 DEDU C	25 STANESCU I	47 BUZLE A	47 BUZLE A	1:17	-1
1 IANCU I	2 VERES D	5 NISTOR I	8 MILITARU R	13 GHITA R	23 DEDU C	47 BUZLE A	47 BUZLE A	1:19	-1
1 IANCU I	2 VERES D	8 MILITARU R	11 NAGY R	17 RACOTE A D	23 DEDU C	47 BUZLE A	47 BUZLE A	1:25	-1
1 IANCU I	7 ANDREI A	9 GRIGORE S	11 NAGY R	23 DEDU C	25 STANESCU I	41 TRIF R	41 TRIF R	1:00	-2
1 IANCU I	7 ANDREI A	8 MILITARU R	9 GRIGORE S	11 NAGY R	13 GHITA R	17 RACOTE A D	17 RACOTE A D	3:02	-2
1 IANCU I	2 VERES D	5 NISTOR I	8 MILITARU R	17 RACOTE A D	23 DEDU C	47 BUZLE A	47 BUZLE A	1:44	-3
1 IANCU I	7 ANDREI A	8 MILITARU R	9 GRIGORE S	13 GHITA R	17 RACOTE A D	23 DEDU C	23 DEDU C	2:17	-3
5 NISTOR I	7 ANDREI A	11 NAGY R	16 POPESCU M	23 DEDU C	25 STANESCU I	41 TRIF R	41 TRIF R	2:50	-3
1 IANCU I	2 VERES D	5 NISTOR I	9 GRIGORE S	23 DEDU C	44 STANCIUC D	47 BUZLE A	47 BUZLE A	3:40	-4
1 IANCU I	2 VERES D	5 NISTOR I	8 MILITARU R	11 NAGY R	23 DEDU C	47 BUZLE A	47 BUZLE A	4:51	-5

Empty Goal								Time Played	GF	GA
2 VERES D	5 NISTOR I	11 NAGY R	23 DEDU C	25 STANESCU I	44 STANCIUC D	47 BUZLE A	47 BUZLE A	3:09	4	1
7 ANDREI A	9 GRIGORE S	11 NAGY R	13 GHITA R	23 DEDU C	44 STANCIUC D	47 BUZLE A	47 BUZLE A	2:18	1	1
5 NISTOR I	6 BOTE A T	7 ANDREI A	23 DEDU C	25 STANESCU I	41 TRIF R	44 STANCIUC D	44 STANCIUC D	1:09	1	1
5 NISTOR I	7 ANDREI A	11 NAGY R	23 DEDU C	25 STANESCU I	41 TRIF R	44 STANCIUC D	44 STANCIUC D	1:03	0	0
5 NISTOR I	6 BOTE A T	7 ANDREI A	11 NAGY R	23 DEDU C	25 STANESCU I	44 STANCIUC D	44 STANCIUC D	0:54	1	0
2 VERES D	5 NISTOR I	8 MILITARU R	13 GHITA R	23 DEDU C	44 STANCIUC D	47 BUZLE A	47 BUZLE A	0:44	1	0
7 ANDREI A	8 MILITARU R	9 GRIGORE S	11 NAGY R	13 GHITA R	17 RACOTE A D	47 BUZLE A	47 BUZLE A	0:35	0	0
2 VERES D	5 NISTOR I	8 MILITARU R	23 DEDU C	25 STANESCU I	44 STANCIUC D	47 BUZLE A	47 BUZLE A	0:30	1	0
5 NISTOR I	6 BOTE A T	7 ANDREI A	11 NAGY R	23 DEDU C	41 TRIF R	44 STANCIUC D	44 STANCIUC D	0:28	0	0
2 VERES D	5 NISTOR I	7 ANDREI A	9 GRIGORE S	23 DEDU C	44 STANCIUC D	47 BUZLE A	47 BUZLE A	0:27	1	0
2 VERES D	5 NISTOR I	11 NAGY R	17 RACOTE A D	23 DEDU C	25 STANESCU I	47 BUZLE A	47 BUZLE A	0:19	0	0
2 VERES D	5 NISTOR I	7 ANDREI A	9 GRIGORE S	17 RACOTE A D	23 DEDU C	47 BUZLE A	47 BUZLE A	0:16	0	0
7 ANDREI A	9 GRIGORE S	11 NAGY R	23 DEDU C	25 STANESCU I	41 TRIF R	47 BUZLE A	47 BUZLE A	0:14	0	0
7 ANDREI A	8 MILITARU R	9 GRIGORE S	11 NAGY R	13 GHITA R	17 RACOTE A D	23 DEDU C	23 DEDU C	0:12	0	0
7 ANDREI A	9 GRIGORE S	11 NAGY R	23 DEDU C	25 STANESCU I	44 STANCIUC D	47 BUZLE A	47 BUZLE A	0:12	1	0
2 VERES D	5 NISTOR I	8 MILITARU R	9 GRIGORE S	17 RACOTE A D	23 DEDU C	47 BUZLE A	47 BUZLE A	0:09	0	0
7 ANDREI A	9 GRIGORE S	11 NAGY R	13 GHITA R	17 RACOTE A D	23 DEDU C	44 STANCIUC D	44 STANCIUC D	0:07	0	0
7 ANDREI A	9 GRIGORE S	23 DEDU C	25 STANESCU I	41 TRIF R	44 STANCIUC D	47 BUZLE A	47 BUZLE A	0:06	0	0

OFFICIAL PARTNERS



EHF PARTNERS



NATIONAL SUPPLIERS





MEN'S EUROPEAN HANDBALL CHAMPIONSHIP
EHF EURO 2026

Preliminary Round - Group B



MEN'S EHF EURO 2026
DENMARK · SWEDEN · NORWAY

SUN 18 JAN 2026
Start Time: 20:30

Match No: 9

Line-Up Analysis

ROU 24 - 39 DEN

Herning
Attendance: 14.535

ROU - Romania

Empty Goal							Time Played	GF	GA
7 ANDREI A	9 GRIGORE S	11 NAGY R	13 GHITA R	17 RACOTEA D	23 DEDU C	47 BUZLE A	0:05	0	0



Report Created SUN 18 JAN 2026 22:00

Page 4 of 6

OFFICIAL PARTNERS



EHF PARTNERS



NATIONAL SUPPLIERS



Preliminary Round - Group B

Line-Up Analysis

Herning

Attendance: 14.535

Match No: 9

ROU 24 - 39 DEN

DEN - Denmark

Lineup efficiency							Time Played	GF	GA
4 LANDIN M	15 SAUGSTRUP M	19 GIDSEL M	20 MOLLER K	38 HOXER M	43 PYTLICK S	49 ANDERSEN F	7:11	4	0
7 JAKOBSEN E	11 LAUGE R	15 SAUGSTRUP M	19 GIDSEL M	20 MOLLER K	33 BERGHOLT E	38 HOXER M	6:12	3	5
4 LANDIN M	15 SAUGSTRUP M	19 GIDSEL M	20 MOLLER K	34 HALD S	38 HOXER M	43 PYTLICK S	6:07	2	2
7 JAKOBSEN E	11 LAUGE R	15 SAUGSTRUP M	19 GIDSEL M	20 MOLLER K	38 HOXER M	43 PYTLICK S	5:50	7	1
7 JAKOBSEN E	11 LAUGE R	15 SAUGSTRUP M	19 GIDSEL M	20 MOLLER K	34 HALD S	38 HOXER M	4:10	1	3
4 LANDIN M	19 GIDSEL M	20 MOLLER K	34 HALD S	38 HOXER M	49 ANDERSEN F	64 MOLLER L	3:01	3	1
7 JAKOBSEN E	15 SAUGSTRUP M	19 GIDSEL M	20 MOLLER K	33 BERGHOLT E	38 HOXER M	43 PYTLICK S	2:58	2	0
15 SAUGSTRUP M	19 GIDSEL M	20 MOLLER K	33 BERGHOLT E	38 HOXER M	43 PYTLICK S	49 ANDERSEN F	2:44	3	2
4 LANDIN M	20 MOLLER K	28 ANDERSSON L	34 HALD S	38 HOXER M	49 ANDERSEN F	64 MOLLER L	2:38	2	1
4 LANDIN M	20 MOLLER K	28 ANDERSSON L	33 BERGHOLT E	34 HALD S	38 HOXER M	64 MOLLER L	2:18	0	1
4 LANDIN M	19 GIDSEL M	20 MOLLER K	25 JORGENSEN L	34 HALD S	38 HOXER M	64 MOLLER L	2:14	0	1
7 JAKOBSEN E	11 LAUGE R	15 SAUGSTRUP M	19 GIDSEL M	20 MOLLER K	34 HALD S	49 ANDERSEN F	2:05	1	1
11 LAUGE R	15 SAUGSTRUP M	19 GIDSEL M	20 MOLLER K	34 HALD S	38 HOXER M	43 PYTLICK S	1:20	1	2
7 JAKOBSEN E	15 SAUGSTRUP M	19 GIDSEL M	20 MOLLER K	34 HALD S	38 HOXER M	43 PYTLICK S	1:20	0	0
11 LAUGE R	15 SAUGSTRUP M	19 GIDSEL M	20 MOLLER K	33 BERGHOLT E	38 HOXER M	43 PYTLICK S	1:11	1	1
4 LANDIN M	28 ANDERSSON L	33 BERGHOLT E	34 HALD S	38 HOXER M	49 ANDERSEN F	64 MOLLER L	1:05	1	0
4 LANDIN M	19 GIDSEL M	20 MOLLER K	33 BERGHOLT E	34 HALD S	38 HOXER M	64 MOLLER L	1:01	0	1
7 JAKOBSEN E	11 LAUGE R	15 SAUGSTRUP M	19 GIDSEL M	34 HALD S	38 HOXER M	43 PYTLICK S	0:51	1	1
4 LANDIN M	19 GIDSEL M	20 MOLLER K	33 BERGHOLT E	38 HOXER M	43 PYTLICK S	49 ANDERSEN F	0:46	1	0
4 LANDIN M	19 GIDSEL M	25 JORGENSEN L	34 HALD S	38 HOXER M	49 ANDERSEN F	64 MOLLER L	0:44	1	0
4 LANDIN M	15 SAUGSTRUP M	19 GIDSEL M	20 MOLLER K	34 HALD S	43 PYTLICK S	49 ANDERSEN F	0:33	0	0
4 LANDIN M	19 GIDSEL M	20 MOLLER K	25 JORGENSEN L	38 HOXER M	43 PYTLICK S	64 MOLLER L	0:26	0	0
7 JAKOBSEN E	11 LAUGE R	15 SAUGSTRUP M	19 GIDSEL M	34 HALD S	43 PYTLICK S	49 ANDERSEN F	0:23	0	1
4 LANDIN M	7 JAKOBSEN E	15 SAUGSTRUP M	19 GIDSEL M	20 MOLLER K	38 HOXER M	43 PYTLICK S	0:23	1	0
4 LANDIN M	19 GIDSEL M	33 BERGHOLT E	34 HALD S	38 HOXER M	49 ANDERSEN F	64 MOLLER L	0:22	1	0
4 LANDIN M	15 SAUGSTRUP M	19 GIDSEL M	20 MOLLER K	38 HOXER M	43 PYTLICK S	64 MOLLER L	0:21	0	0
11 LAUGE R	15 SAUGSTRUP M	19 GIDSEL M	20 MOLLER K	33 BERGHOLT E	38 HOXER M	49 ANDERSEN F	0:19	0	0
4 LANDIN M	19 GIDSEL M	20 MOLLER K	25 JORGENSEN L	38 HOXER M	49 ANDERSEN F	64 MOLLER L	0:19	0	0
7 JAKOBSEN E	11 LAUGE R	15 SAUGSTRUP M	19 GIDSEL M	20 MOLLER K	43 PYTLICK S	49 ANDERSEN F	0:16	1	0
4 LANDIN M	19 GIDSEL M	25 JORGENSEN L	34 HALD S	38 HOXER M	43 PYTLICK S	64 MOLLER L	0:16	1	0
4 LANDIN M	19 GIDSEL M	20 MOLLER K	33 BERGHOLT E	34 HALD S	43 PYTLICK S	49 ANDERSEN F	0:15	0	0
7 JAKOBSEN E	11 LAUGE R	15 SAUGSTRUP M	19 GIDSEL M	33 BERGHOLT E	38 HOXER M	43 PYTLICK S	0:09	1	0
7 JAKOBSEN E	15 SAUGSTRUP M	19 GIDSEL M	34 HALD S	38 HOXER M	43 PYTLICK S	49 ANDERSEN F	0:09	0	0
11 LAUGE R	15 SAUGSTRUP M	19 GIDSEL M	33 BERGHOLT E	38 HOXER M	43 PYTLICK S	49 ANDERSEN F	0:03	0	0

Score development							Time Played	G Diff.
7 JAKOBSEN E	11 LAUGE R	15 SAUGSTRUP M	19 GIDSEL M	20 MOLLER K	38 HOXER M	43 PYTLICK S	5:50	+6
4 LANDIN M	15 SAUGSTRUP M	19 GIDSEL M	20 MOLLER K	38 HOXER M	43 PYTLICK S	49 ANDERSEN F	7:11	+4
7 JAKOBSEN E	15 SAUGSTRUP M	19 GIDSEL M	20 MOLLER K	33 BERGHOLT E	38 HOXER M	43 PYTLICK S	2:58	+2
4 LANDIN M	19 GIDSEL M	20 MOLLER K	34 HALD S	38 HOXER M	49 ANDERSEN F	64 MOLLER L	3:01	+2
7 JAKOBSEN E	11 LAUGE R	15 SAUGSTRUP M	19 GIDSEL M	33 BERGHOLT E	38 HOXER M	43 PYTLICK S	0:09	+1
7 JAKOBSEN E	11 LAUGE R	15 SAUGSTRUP M	19 GIDSEL M	20 MOLLER K	43 PYTLICK S	49 ANDERSEN F	0:16	+1
4 LANDIN M	19 GIDSEL M	25 JORGENSEN L	34 HALD S	38 HOXER M	43 PYTLICK S	64 MOLLER L	0:16	+1
4 LANDIN M	19 GIDSEL M	33 BERGHOLT E	34 HALD S	38 HOXER M	49 ANDERSEN F	64 MOLLER L	0:22	+1
4 LANDIN M	7 JAKOBSEN E	15 SAUGSTRUP M	19 GIDSEL M	20 MOLLER K	38 HOXER M	43 PYTLICK S	0:23	+1
4 LANDIN M	19 GIDSEL M	25 JORGENSEN L	34 HALD S	38 HOXER M	49 ANDERSEN F	64 MOLLER L	0:44	+1
4 LANDIN M	19 GIDSEL M	20 MOLLER K	33 BERGHOLT E	38 HOXER M	43 PYTLICK S	49 ANDERSEN F	0:46	+1
4 LANDIN M	28 ANDERSSON L	33 BERGHOLT E	34 HALD S	38 HOXER M	49 ANDERSEN F	64 MOLLER L	1:05	+1
4 LANDIN M	20 MOLLER K	28 ANDERSSON L	34 HALD S	38 HOXER M	49 ANDERSEN F	64 MOLLER L	2:38	+1
15 SAUGSTRUP M	19 GIDSEL M	20 MOLLER K	33 BERGHOLT E	38 HOXER M	43 PYTLICK S	49 ANDERSEN F	2:44	+1
11 LAUGE R	15 SAUGSTRUP M	19 GIDSEL M	33 BERGHOLT E	38 HOXER M	43 PYTLICK S	49 ANDERSEN F	0:03	0
7 JAKOBSEN E	15 SAUGSTRUP M	19 GIDSEL M	34 HALD S	38 HOXER M	43 PYTLICK S	49 ANDERSEN F	0:09	0
4 LANDIN M	19 GIDSEL M	20 MOLLER K	33 BERGHOLT E	34 HALD S	43 PYTLICK S	49 ANDERSEN F	0:15	0

OFFICIAL PARTNERS



EHF PARTNERS



NATIONAL SUPPLIERS



Line-Up Analysis

Herning

Attendance: 14.535

Match No: 9

ROU 24 - 39 DEN

DEN - Denmark

Score development								Time Played	G Diff.
11 LAUGE R	15 SAUGSTRUP M	19 GIDSEL M	20 MOLLER K	33 BERGHOLT E	38 HOXER M	49 ANDERSEN F	64 MOLLER L	0:19	0
4 LANDIN M	19 GIDSEL M	20 MOLLER K	25 JORGENSEN L	38 HOXER M	49 ANDERSEN F	64 MOLLER L	64 MOLLER L	0:19	0
4 LANDIN M	15 SAUGSTRUP M	19 GIDSEL M	20 MOLLER K	38 HOXER M	43 PYTLICK S	64 MOLLER L	64 MOLLER L	0:21	0
4 LANDIN M	19 GIDSEL M	20 MOLLER K	25 JORGENSEN L	38 HOXER M	43 PYTLICK S	64 MOLLER L	64 MOLLER L	0:26	0
4 LANDIN M	15 SAUGSTRUP M	19 GIDSEL M	20 MOLLER K	34 HALD S	43 PYTLICK S	49 ANDERSEN F	64 MOLLER L	0:33	0
7 JAKOBSEN E	11 LAUGE R	15 SAUGSTRUP M	19 GIDSEL M	34 HALD S	38 HOXER M	43 PYTLICK S	49 ANDERSEN F	0:51	0
11 LAUGE R	15 SAUGSTRUP M	19 GIDSEL M	20 MOLLER K	33 BERGHOLT E	38 HOXER M	43 PYTLICK S	64 MOLLER L	1:11	0
7 JAKOBSEN E	15 SAUGSTRUP M	19 GIDSEL M	20 MOLLER K	34 HALD S	38 HOXER M	43 PYTLICK S	64 MOLLER L	1:20	0
7 JAKOBSEN E	11 LAUGE R	15 SAUGSTRUP M	19 GIDSEL M	20 MOLLER K	34 HALD S	49 ANDERSEN F	64 MOLLER L	2:05	0
4 LANDIN M	15 SAUGSTRUP M	19 GIDSEL M	20 MOLLER K	34 HALD S	38 HOXER M	43 PYTLICK S	64 MOLLER L	6:07	0
7 JAKOBSEN E	11 LAUGE R	15 SAUGSTRUP M	19 GIDSEL M	34 HALD S	43 PYTLICK S	49 ANDERSEN F	64 MOLLER L	0:23	-1
4 LANDIN M	19 GIDSEL M	20 MOLLER K	33 BERGHOLT E	34 HALD S	38 HOXER M	64 MOLLER L	64 MOLLER L	1:01	-1
11 LAUGE R	15 SAUGSTRUP M	19 GIDSEL M	20 MOLLER K	34 HALD S	38 HOXER M	43 PYTLICK S	64 MOLLER L	1:20	-1
4 LANDIN M	19 GIDSEL M	20 MOLLER K	25 JORGENSEN L	34 HALD S	38 HOXER M	64 MOLLER L	64 MOLLER L	2:14	-1
4 LANDIN M	20 MOLLER K	28 ANDERSSON L	33 BERGHOLT E	34 HALD S	38 HOXER M	64 MOLLER L	64 MOLLER L	2:18	-1
7 JAKOBSEN E	11 LAUGE R	15 SAUGSTRUP M	19 GIDSEL M	20 MOLLER K	34 HALD S	38 HOXER M	64 MOLLER L	4:10	-2
7 JAKOBSEN E	11 LAUGE R	15 SAUGSTRUP M	19 GIDSEL M	20 MOLLER K	33 BERGHOLT E	38 HOXER M	64 MOLLER L	6:12	-2

Empty Goal								Time Played	GF	GA
4 LANDIN M	28 ANDERSSON L	33 BERGHOLT E	34 HALD S	38 HOXER M	49 ANDERSEN F	64 MOLLER L	64 MOLLER L	1:05	1	0
7 JAKOBSEN E	11 LAUGE R	15 SAUGSTRUP M	19 GIDSEL M	34 HALD S	38 HOXER M	43 PYTLICK S	64 MOLLER L	0:51	1	1
4 LANDIN M	19 GIDSEL M	25 JORGENSEN L	34 HALD S	38 HOXER M	49 ANDERSEN F	64 MOLLER L	64 MOLLER L	0:44	1	0
7 JAKOBSEN E	11 LAUGE R	15 SAUGSTRUP M	19 GIDSEL M	34 HALD S	43 PYTLICK S	49 ANDERSEN F	64 MOLLER L	0:23	0	1
4 LANDIN M	19 GIDSEL M	33 BERGHOLT E	34 HALD S	38 HOXER M	49 ANDERSEN F	64 MOLLER L	64 MOLLER L	0:22	1	0
4 LANDIN M	19 GIDSEL M	25 JORGENSEN L	34 HALD S	38 HOXER M	43 PYTLICK S	64 MOLLER L	64 MOLLER L	0:16	1	0
7 JAKOBSEN E	11 LAUGE R	15 SAUGSTRUP M	19 GIDSEL M	33 BERGHOLT E	38 HOXER M	43 PYTLICK S	64 MOLLER L	0:09	1	0
7 JAKOBSEN E	15 SAUGSTRUP M	19 GIDSEL M	34 HALD S	38 HOXER M	43 PYTLICK S	49 ANDERSEN F	64 MOLLER L	0:09	0	0
11 LAUGE R	15 SAUGSTRUP M	19 GIDSEL M	33 BERGHOLT E	38 HOXER M	43 PYTLICK S	49 ANDERSEN F	64 MOLLER L	0:03	0	0

Legend:
G Diff. Goals Difference

OFFICIAL PARTNERS



EHF PARTNERS



NATIONAL SUPPLIERS

