

Start List

Herning

Match No: 8

POR - ROU

Referees: KURTAGIC Mirza (SWE) / WETTERWIK Mattias (SWE)
Reserve: LAH Bojan (SLO) / SOK David (SLO)
EHF Observer: COHEN Shlomo (ISR)

EHF Supervisor: TRESPIDI Marco (ITA)
Timekeeper: JOCHUMSEN Jan Kirk (DEN)
Scorekeeper: MATHIASSEN Henrik (DEN)

POR - Portugal

No.	Name	Pos.	Height m	Int. Matches		Competition Statistics							
				MP	G	MP	G	7mG	YC	2Min	RC	S	7mS
41	CAPDEVILLE Gustavo	GK	1.90	74	0								
99	VALERIO Diogo	GK	1.94	14	0								
8	ITURIZZA Victor	P	1.93	62	214								
13	SALVADOR Salvador	LB	1.98	45	102								
14	SILVA Rui	CB	1.86	153	276								
20	NEVES Miguel	LB	2.03	7	16								
21	FERNANDES Leonel	LW	1.91	68	121								
23	BRANQUINHO Diogo	LW	1.85	112	233								
25	AREIA António	RW	1.90	115	344								
26	COSTA Francisco	RB	1.90	44	175								
29	FERREIRA José	RW	1.83	5	5								
66	GOMES João	RB	1.78	20	48								
79	COSTA Martim	CB	1.88	42	177								
82	FRADE Luís	P	1.94	90	204								
86	BRANDÃO Ricardo	P	1.95	25	29								
95	CAVALCANTI Gabriel	CB	1.97	9	16								
(NN)	MONTEIRO Filipe	CB	1.81	5	5								
(NN)	TONICHER Pedro	GK	1.90	2	0								
Headcoach		PEREIRA Paulo		Bench/Team									

POR Played		
PR	ROU	16 JAN
PR	MKD	18 JAN
PR	DEN	20 JAN

ROU - Romania

No.	Name	Pos.	Height m	Int. Matches		Competition Statistics							
				MP	G	MP	G	7mG	YC	2Min	RC	S	7mS
1	IANCU Ionut	GK	1.92	90	7								
16	POPESCU Mihai	GK	1.95	249	8								
2	VERES Denis	LW	1.77	13	6								
5	NISTOR Ionut	RW	1.87	51	82								
6	BOTEA Tudor	LB	1.94	41	63								
7	ANDREI Alexandru	LW	1.80	21	15								
8	MILITARU Robert	LB	1.96	95	17								
9	GRIGORE Sorin	RW	1.93	13	7								
10	CUMPANICI Stefan	CB	1.98	31	29								
13	GHITA Radu	RB	1.89	75	96								
17	RACOTEA Dan	LB	2.03	90	77								
20	SZASZ András	P	1.98	35	24								
23	DEDU Calin	P	2.07	48	51								
25	STANESCU Ionut	RB	1.92	15	12								
44	STANCIUC Daniel	CB	1.89	26	83								
47	BUZLE Andrei	LB	1.98	64	112								
(NN)	NAGY Robert	P	1.92	28	25								
(NN)	TRIF Razvan	LB	1.92	10	1								
Headcoach		BURICEA George		Bench/Team									

ROU Played		
PR	POR	16 JAN
PR	DEN	18 JAN
PR	MKD	20 JAN

Notes:
Players below the bold line are not playing in this match.

Legend:			
(NN)	Not nominated	2Min	2-Minute Suspensions
CB	Centre Back	G	Goals
LW	Left Wing	MP	Matches Played
PR	Preliminary Round	RB	Right Back
RW	Right Wing	S	Saves
		7mG	7-metre Goals
		GK	Goalkeeper
		P	Line Player
		RC	Red Cards (Direct and after 3rd 2-Minute Suspension)
		YC	Yellow Cards
		7mS	7-metre Saves
		LB	Left Back
		Pos	Position

OFFICIAL PARTNERS



EHF PARTNERS



NATIONAL SUPPLIERS



Preliminary Round - Group B

FRI 16 JAN 2026
Start Time: 18:00

Results

Herning

Attendance: 10.908

Match No: 8

POR 40 - 34 ROU
(23 - 15) (17 - 19)

Referees: KURTAGIC Mirza (SWE) / WETTERWIK Mattias (SWE)

Portugal

Coach: PEREIRA Paulo

Time outs: 3

No.	Name	Total		Goals / Shots						Punishments			TP				
		G/S	%	7m	6m	Wing	BT	FB	FTO	9m	EG	YC		RC	2M		
8	ITURIZZA Victor	2/3	67		0/1				1/1								39:07
13	SALVADOR Salvador	6/7	86		2/2					3/4	1/1						39:02
14	SILVA Rui	1/4	25		0/1			1/1		0/2							27:53
20	NEVES Miguel	4/4	100				2/2	1/1			1/1	1	1				29:09
21	FERNANDES Leonel	2/2	100		1/1			1/1									14:34
23	BRANQUINHO Diogo	1/1	100			1/1											23:05
25	AREIA António	2/3	67	0/1		2/2											22:10
26	COSTA Francisco	9/13	69		1/1	1/1	2/3	1/1		3/6	1/1						43:08
29	FERREIRA José																23:00
41	CAPDEVILLE Gustavo	0/1	0								0/1						48:01
66	GOMES Joao	1/1	100		1/1												13:15
79	COSTA Martim	7/10	70		1/1		3/4	1/1		2/4							24:53
82	FRADE Luis	3/6	50		1/2			1/2	0/1		1/1			1			30:58
86	BRANDAO Ricardo	2/2	100		2/2												15:10
95	CAVALCANTI Gabriel																9:03
99	VALERIO Diogo																9:58
Totals		40/57	70	0/1	9/12	4/4	8/10	6/7	0/1	8/16	5/6	1	1	2			60:00

No.	Name	Total		Saves / Shots						
		S/S	%	7m	6m	Wing	BT	FB	FTO	9m
41	CAPDEVILLE Gustavo	9/35	26	2/4	1/6	1/4	0/2	0/4		5/15
99	VALERIO Diogo	0/8	0		0/3	0/1	0/2	0/1		0/1
Totals		9/43	21	2/4	1/9	1/5	0/4	0/5		5/16

Romania

Coach: BURICEA George

Time outs: 3

No.	Name	Total		Goals / Shots						Punishments			TP				
		G/S	%	7m	6m	Wing	BT	FB	FTO	9m	EG	YC		RC	2M		
1	IANCU Ionut																40:36
2	VERES Denis	4/5	80			4/5											30:00
5	NISTOR Ionut	2/3	67			0/1		2/2									24:19
6	BOTEAN Tudor	0/1	0							0/1							6:07
7	ANDREI Alexandru	0/1	0			0/1											29:45
8	MILITARU Robert																34:29
9	GRIGORE Sorin	1/3	33		0/1	0/1		1/1									30:00
10	CUMPANICI Stefan	1/2	50				1/1			0/1							3:19
13	GHITA Radu	2/3	67							2/3							34:09
16	POPESCU Mihai																14:24
17	RACOTEA Dan	2/3	67							1/2				1			20:48
20	SZASZ András	4/4	100		3/3			1/1									39:43
23	DEDU Calin	3/6	50		3/4				0/1								23:03
25	STANESCU Ionut	1/2	50							1/2							8:32
44	STANCIUC Daniel	8/14	57	2/4	1/1		3/3			2/6							31:36
47	BUZLE Andrei	6/7	86		1/1					5/6				1			47:10
Totals		34/54	63	2/4	8/10	4/8	4/5	5/5	0/1	11/21		1		1			60:00

No.	Name	Total		Saves / Shots						
		S/S	%	7m	6m	Wing	BT	FB	FTO	9m
1	IANCU Ionut	8/35	23	1/1	3/10	0/4	1/7	1/6		2/7
16	POPESCU Mihai	2/10	20		0/2		0/2	0/1	1/1	1/4
EG		5								
Totals		10/50	20	1/1	3/12	0/4	1/9	1/7	1/1	3/11

Attacks

Team:	All		Player Majority		Player Minority		Position Attacks		FB		Ind. FB		Team FB	Att. Dur. (min)	Turnover		
	G/Att.	%	G/Att.	%	G/Att.	%	G/Att.	%	G/Att.	%	G/Att.	%			All	%	TOFB
POR	40/64	63	3/3	100	3/3	100	29/50	58	6/7	86		6/7	86	0:26	12	19	0
ROU	34/63	54	2/4	50	1/3	33	29/56	52	5/6	83		5/6	83	0:29	16	25	1

RUNNING SCORE	
POR - ROU	
1st Half	
	0 (2) 1 SZASZ A
NEVES M	1 (2) 1
	1 (3) 2 BUZLE A
	1 (4) 3 BUZLE A
SALVADOR S	2 (5) 3
	2 (6) 4 BUZLE A
SILVA R	3 (7) 4
NEVES M	4 (7) 4
ITURIZZA V	5 (8) 4
FRADE L	6 (10) 4
BRANQUINHO D	7 (10) 4
COSTA F	8 (11) 4
	8 (12) 5 STANCIUC D
COSTA F	9 (13) 5
	9 (13) 6 GRIGORE S
SALVADOR S	10 (14) 6
NEVES M	11 (14) 6
ITURIZZA V	12 (15) 6
	12 (15) 7 STANCIUC D
FRADE L	13 (15) 7
	13 (17) 8 STANESCU I
	13 (18) 9 RACOTEA D
COSTA M	14 (18) 9
COSTA F	15 (19) 9
	15 (19) 10 STANCIUC D
FERNANDES L	16 (20) 10
COSTA M	17 (20) 10
GOMES J	18 (24) 10
FERNANDES L	19 (24) 10
	19 (25) 11 SZASZ A
COSTA F	20 (26) 11
	20 (26) 12 CUMPANICI S
SALVADOR S	21 (26) 12
	21 (27) 13 DEDU C
	21 (28) 14 STANCIUC D
COSTA F	22 (28) 14
COSTA M	23 (29) 14
	23 (30) 15 SZASZ A
2nd Half	
	23 (31) 16 BUZLE A
BRANDAO R	24 (32) 16
	24 (34) 17 VERES D
	24 (35) 18 BUZLE A
	24 (35) 19 NISTOR I
COSTA M	25 (36) 19
COSTA M	26 (37) 19
	26 (38) 20 STANCIUC D
COSTA M	27 (38) 20
BRANDAO R	28 (39) 20
	28 (40) 21 GHITA R
NEVES M	29 (40) 21
	29 (41) 22 VERES D
COSTA F	30 (42) 22
	30 (44) 23 GHITA R
	30 (45) 24 RACOTEA D
SALVADOR S	31 (45) 24
	31 (46) 25 BUZLE A
COSTA F	32 (47) 25
FRADE L	33 (47) 25
	33 (48) 26 VERES D
SALVADOR S	34 (49) 26
SALVADOR S	35 (50) 26
	35 (50) 27 STANCIUC D
	35 (51) 28 DEDU C
AREIA A	36 (52) 28
	36 (53) 29 STANCIUC D
	36 (54) 30 VERES D
	36 (55) 31 SZASZ A

OFFICIAL PARTNERS



EHF PARTNERS



NATIONAL SUPPLIERS



Results

Match No: 8

Herning

Attendance: 10.908
AREIA A37 (56') 31
37 (57') 32 DEDU C
COSTA F38 (57') 32
38 (57') 33 NISTOR I
38 (58') 34 STANCIUC D
COSTA M39 (60') 34
COSTA F40 (60') 34

Legend:			
%	Efficiency	2M	2-Minute Suspensions
Att. Dur.	Average Attack Duration	BT	Breakthroughs
G/Att.	Goals/Attacks	G/S	Goals/Shots
RC	Red Cards (Direct and after Third 2-Minute Suspension)	No.	Uniform Number
TOFB	Turnover during Fast Breaks	S/S	Saves/Shots
		TP	Time Played
		7m	7-metre Penalty Shots
		FB	Fast Breaks
		9m	9-metre Shots
		FTO	Fast Throw off
		Wing	Wing Shots

OFFICIAL PARTNERS



EHF PARTNERS



NATIONAL SUPPLIERS



Match Team Statistics

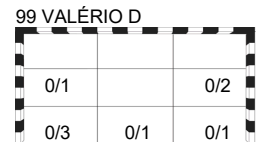
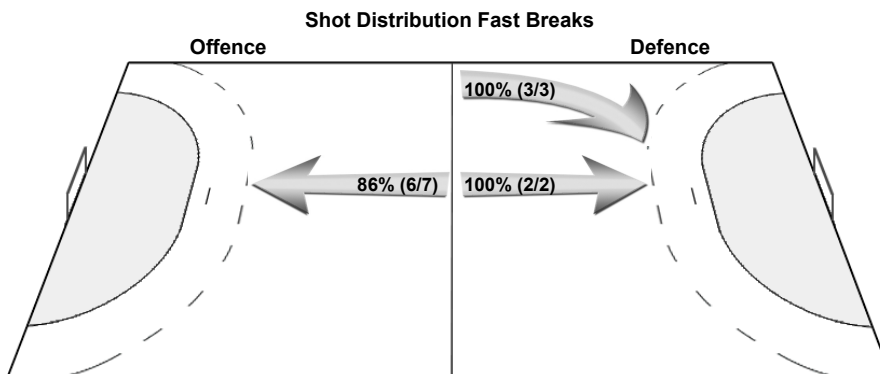
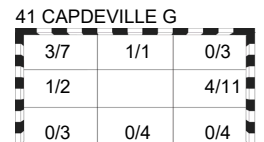
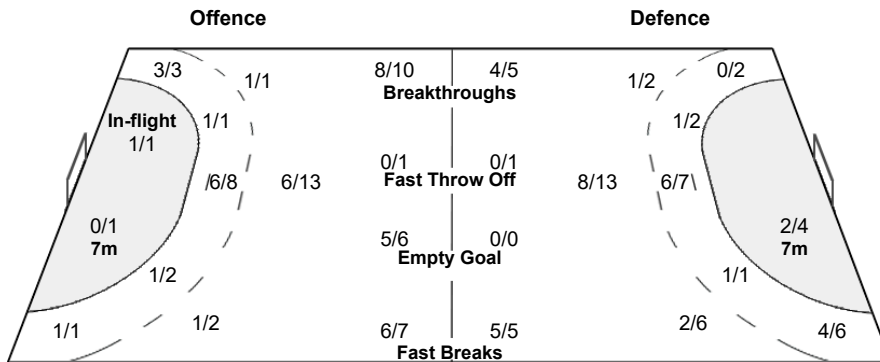
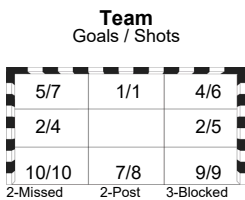
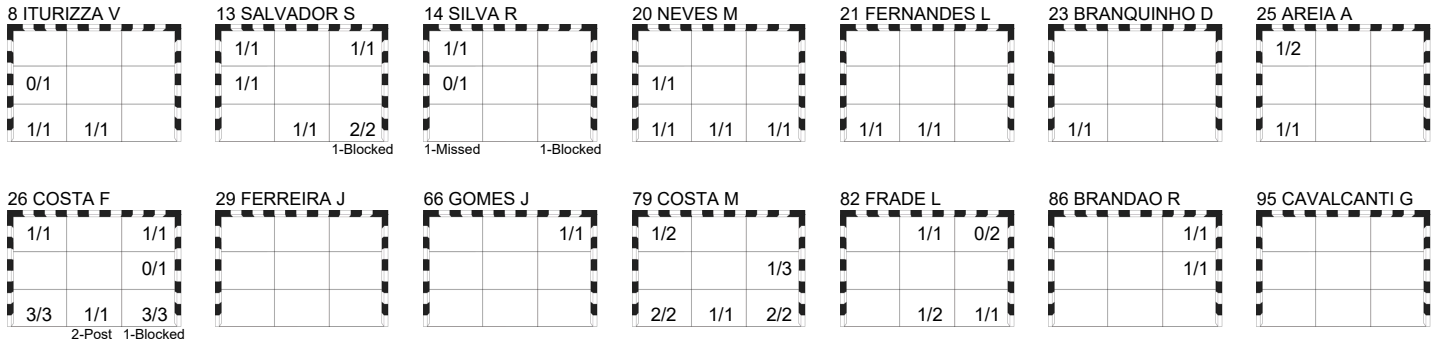
Match No: 8

POR 40 - 34 ROU
(23 - 15) (17 - 19)

Referees: KURTAGIC Mirza (SWE) / WETTERWIK Mattias (SWE)

POR - Portugal

Overview of Shot Distribution



OFFICIAL PARTNERS



EHF PARTNERS



NATIONAL SUPPLIERS



Match No: 8

Match Team Statistics

POR 40 - 34 ROU

(23 - 15) (17 - 19)

Referees: KURTAGIC Mirza (SWE) / WETTERWIK Mattias (SWE)

ROU - Romania

Coach: BURICEA George

Time outs: 3

No.	Name	Total		All Goals / Shots								Punishments				Offence			Defence			TP	
		G/S	%	7m	7m%	6m	Wing	BT	FB	FTO	9m	EG	YC	RC	2M	2+2	AS	R7	TO/TF	ST	BS		P7
1	IANCU Ionut																						40:36
2	VERES Denis	4/5	80				4/5											1	1				30:00
5	NISTOR Ionut	2/3	67				0/1			2/2													24:19
6	BOTEAN Tudor	0/1	0								0/1						2	1					6:07
7	ANDREI Alexandru	0/1	0				0/1											1					29:45
8	MILITARU Robert																			1	1		34:29
9	GRIGORE Sorin	1/3	33			0/1	0/1			1/1									1				30:00
10	CUMPANICI Stefan	1/2	50						1/1		0/1						1						3:19
13	GHITA Radu	2/3	67								2/3						4		3	2			34:09
16	POPESCU Mihai																						14:24
17	RACOTEAN Dan	2/3	67							1/1	1/2			1									20:48
20	SZASZ András	4/4	100			3/3				1/1							1	1			2		39:43
23	DEDU Calin	3/6	50			3/4		0/1			0/1						1	2		1			23:03
25	STANESCU Ionut	1/2	50								1/2												8:32
44	STANCIUC Daniel	8/14	57	2/4	50	1/1		3/3			2/6					2	1	2					31:36
47	BUZLE Andrei	6/7	86			1/1					5/6					1	1	3	1			1	47:10
Totals		34/54	63	2/4	50	8/10	4/8	4/5	5/5	0/1	11/21			1	1	12	4	12	4	2	3	1	

No.	Name	Total		All Saves / Shots										
		S/S	%	7m	7m%	Near Shots				FB	FTO	9m	9m%	
				All	All%	6m	Wing	BT						
1	IANCU Ionut	8/35	23	1/1	100	4/21	19	3/10	0/4	1/7	1/6		2/7	29
16	POPESCU Mihai	2/10	20			0/4	0	0/2		0/2	0/1	1/4	25	
EG		5												
Totals		10/50	20	1/1	100	4/25	16	3/12	0/4	1/9	1/7	1/1	3/11	27

Attacks

Team	All		Player Majority		Player Minority		Position Attacks		FB		Ind. FB		Team FB		Att. Dur. (min)	Turnover		
	G/Att.	%	G/Att.	%	G/Att.	%	G/Att.	%	G/Att.	%	G/Att.	%	G/Att.	%		All	%	TOFB
ROU	34/63	54	2/4	50	1/3	33	29/56	52	5/6	83			5/6	83	0:29	16	25	1

Team Shots

	Goals	Saves	Missed	Post	Blocked	Total	G/S %	Prop %					
6m Shots	8	1		1		10	80	19					
Wing Shots	4	1	1	2		8	50	15					
L R	4		1	2		6	2	67	0	11	4		
9m Shots	11	5	1		4	21	52	39					
L C R	2	8	1		1	2	1	33	62	50	11	24	4
7m Penalty Throws	2	2				4	50	7					
Fast Breaks	5					5	100	9					
Breakthroughs	4			1		5	80	9					
Fast Throw Offs				1		1	0	2					
Empty Goals								0					
Totals	34	9	3	4	4	54	63	100					

Legend:			
%	Efficiency	2M	2-Minute Suspensions
9m	9-metre Shots	AS	Assists
C	Center	EG	Empty Goal
G/S	Goals/Shots	Ind.	Individual
R7	Received 7-metre Fouls	R	Right
ST	Steals	TO/TF	Turnover/Technical Fouls
Wing	Wing Shots	YC	Yellow Cards
2+2	2+2 Minute Suspensions	6m	6-metre Shots
Att. Dur.	Average Attack Duration	BS	Blocked Shots
FB	Fast Breaks	FTO	Fast Throw off
L	Left	P7	Penalty 7-metre Fouls
RC	Red Cards (Direct and after 3rd 2-Minute Suspension)	Prop %	Proportion of Shots
TOFB	Turnover during Fast Breaks	S/S	Saves/Shots
		TP	Time Played

OFFICIAL PARTNERS



EHF PARTNERS



NATIONAL SUPPLIERS



Match Team Statistics

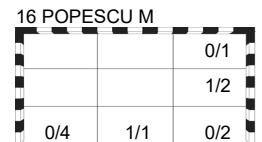
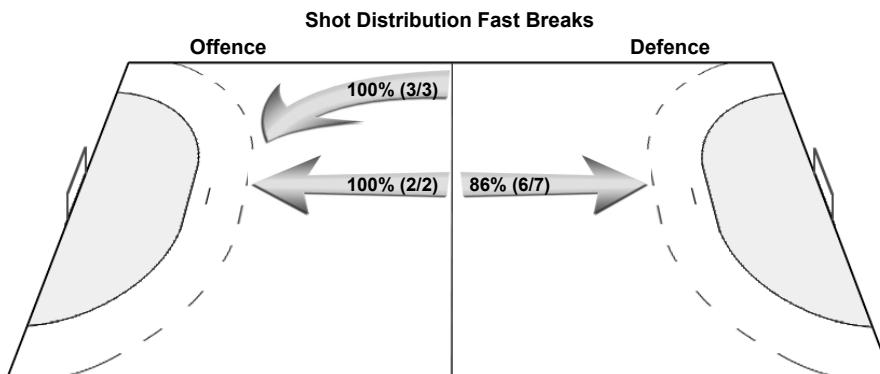
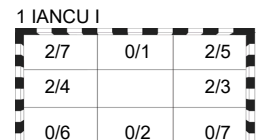
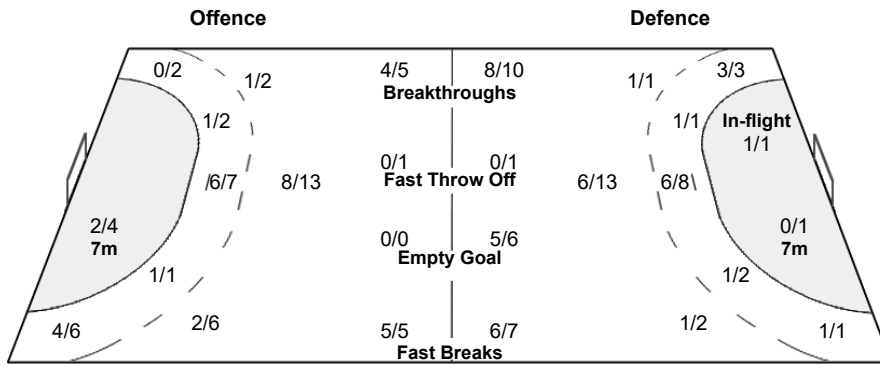
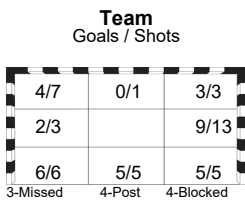
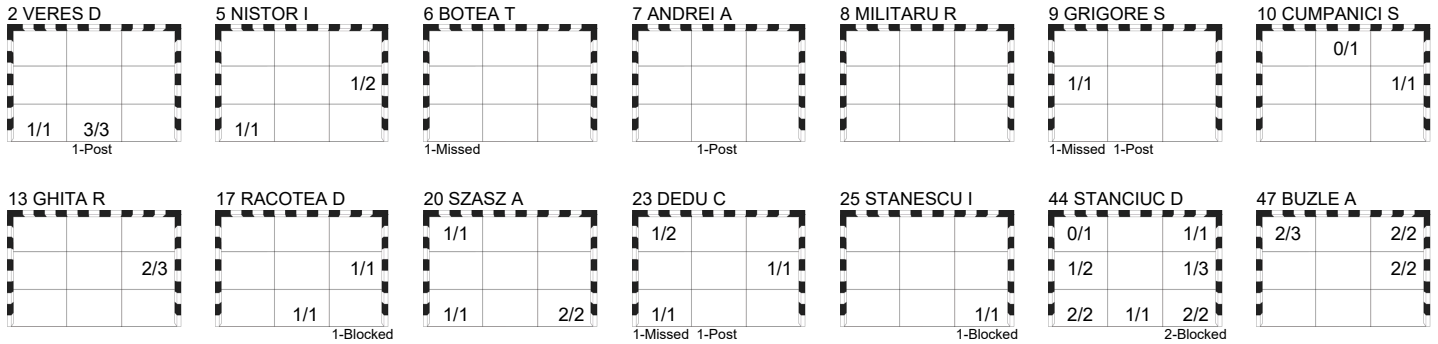
Match No: 8

POR 40 - 34 ROU
(23 - 15) (17 - 19)

Referees: KURTAGIC Mirza (SWE) / WETTERWIK Mattias (SWE)

ROU - Romania

Overview of Shot Distribution



OFFICIAL PARTNERS



EHF PARTNERS



NATIONAL SUPPLIERS



Match No: 8

Play by Play

POR 40 - 34 ROU

(23 - 15) (17 - 19)

Referees: KURTAGIC Mirza (SWE) / WETTERWIK Mattias (SWE)

POR	8 ITURIZZA Victor	13 SALVADOR Salvador	14 SILVA Rui	A FIDALGO Jorge
	20 NEVES Miguel	21 FERNANDES Leonel	23 BRANQUINHO Diogo	B PEREIRA Paulo
	25 AREIA António	26 COSTA Francisco	29 FERREIRA José	C FERREIRA Telmo
	41 CAPDEVILLE Gustavo	66 GOMES Joao	79 COSTA Martim	D CATARINO Paulo
	82 FRADE Luís	86 BRANDAO Ricardo	95 CAVALCANTI Gabriel	E FONSECA Miguel
	99 VALÉRIO Diogo			
ROU	1 IANCU Ionut	2 VERES Denis	5 NISTOR Ionut	A GEORGESCU Ionut-Stefan
	6 BOTEA Tudor	7 ANDREI Alexandru	8 MILITARU Robert	B BURICEA George
	9 GRIGORE Sorin	10 CUMPANICI Stefan	13 GHITA Radu	C STANESCU Rudi
	16 POPESCU Mihai	17 RACOTEA Dan	20 SZASZ András	D CIOCIU Florin
	23 DEDU Calin	25 STANESCU Ionut	44 STANCIUC Daniel	E VARJAC Cezar-Ionut
	47 BUZLE Andrei			

1st HALF

Match Time	POR - Portugal	Score	Lead	ROU - Romania
0:00	41 CAPDEVILLE G Goalkeeper			1 IANCU I Goalkeeper
1:03	14 SILVA R Shot centre 9m missed			
1:11		0 - 1	-1	20 SZASZ A Goal fast break bottom right (13 GHITA R), 87.96 km/h
1:32	20 NEVES M Goal breakthrough bottom right, 104.62 km/h	1 - 1	0	
2:04		1 - 2	-1	47 BUZLE A Goal centre 9m top right
2:10	20 NEVES M Turnover			
2:15				13 GHITA R Shot centre 9m saved middle right
2:54	26 COSTA F Shot centre 9m post			
3:02	13 SALVADOR S Shot left 9m blocked			20 SZASZ A Block
3:43		1 - 3	-2	47 BUZLE A Goal centre 9m middle right, 118.75 km/h
4:18	13 SALVADOR S Goal centre 9m top left, 106.49 km/h	2 - 3	-1	
4:28				20 SZASZ A Turnover
5:17	26 COSTA F Shot breakthrough post			
5:24		2 - 4	-2	47 BUZLE A Goal centre 6m middle right (13 GHITA R), 108.97 km/h
6:12	14 SILVA R Goal breakthrough top left, 112.04 km/h	3 - 4	-1	
6:41				44 STANCIUC D Shot centre 9m saved middle left
6:57	20 NEVES M Goal breakthrough bottom left, 33.38 km/h	4 - 4	0	
7:35	82 FRADE L Steal			47 BUZLE A Turnover
7:42	8 ITURIZZA V Goal fast break bottom left (82 FRADE L), 106.80 km/h	5 - 4	+1	
8:13	20 NEVES M Warning (yellow card)			
8:31				47 BUZLE A Turnover
8:41				47 BUZLE A Warning (yellow card)
9:06	82 FRADE L Goal centre 6m top centre (26 COSTA F), 100.40 km/h	6 - 4	+2	
9:17				13 GHITA R Technical Fault
9:50	23 BRANQUINHO D Goal left wing bottom left (13 SALVADOR S), 81.20 km/h	7 - 4	+3	
10:05				Team timeout
10:24				47 BUZLE A Turnover
10:29	26 COSTA F Goal fast break bottom right (8 ITURIZZA V), 102.82 km/h	8 - 4	+4	
11:05	8 ITURIZZA V 7m caused			23 DEDU C 7m received
11:26		8 - 5	+3	44 STANCIUC D Goal Penalty shot bottom left (23 DEDU C), 84.80 km/h
12:07	26 COSTA F Goal flying throw bottom left (23 BRANQUINHO D), 80.34 km/h	9 - 5	+4	
12:18				23 DEDU C Technical Fault
12:26	82 FRADE L Shot left 6m saved top right			
12:42		9 - 6	+3	9 GRIGORE S Goal fast break middle left, 77.59 km/h
12:45				17 RACOTEA D 2-minutes suspension
13:18	13 SALVADOR S Goal centre 6m bottom right (26 COSTA F), 102.72 km/h	10 - 6	+4	
13:30				23 DEDU C for 1 IANCU I Empty goal
13:33	20 NEVES M Steal			7 ANDREI A Turnover

OFFICIAL PARTNERS



EHF PARTNERS



NATIONAL SUPPLIERS



Match No: 8

Play by Play

POR 40 - 34 ROU

(23 - 15) (17 - 19)

1st HALF

Match Time	POR - Portugal	Score	Lead	ROU - Romania
13:35	20 NEVES M Goal empty goal bottom centre, 96.95 km/h	11 - 6	+5	
14:05				47 BUZLE A Technical Fault
14:10	8 ITURIZZA V Goal empty goal bottom centre (82 FRADE L), 82.99 km/h	12 - 6	+6	
14:42		12 - 7	+5	44 STANCIUC D Goal breakthrough bottom right, 100.45 km/h
14:49	82 FRADE L Goal empty goal bottom centre, 63.17 km/h	13 - 7	+6	
15:06				1 IANCU I for 17 RACOTEA D Goalkeeper back
15:23				13 GHITA R Technical Fault
15:34	8 ITURIZZA V Technical Fault			
16:23		13 - 8	+5	25 STANESCU I Goal centre 9m bottom right, 80.06 km/h
16:53	8 ITURIZZA V Shot centre 6m saved middle left			
17:03		13 - 9	+4	17 RACOTEA D Goal fast break middle right (6 BOTEAT), 55.09 km/h
17:37	79 COSTA M Goal breakthrough bottom right, 91.49 km/h	14 - 9	+5	
18:01				6 BOTEAT Turnover
18:10	26 COSTA F Goal centre 9m bottom left, 112.28 km/h	15 - 9	+6	
18:42		15 - 10	+5	44 STANCIUC D Goal centre 9m bottom centre
19:22	21 FERNANDES L Goal centre 6m bottom centre (26 COSTA F), 38.41 km/h	16 - 10	+6	
19:49	21 FERNANDES L Steal			44 STANCIUC D Turnover
19:54	79 COSTA M Goal fast break middle right (13 SALVADOR S), 114.22 km/h	17 - 10	+7	
20:22				16 POPESCU M for 1 IANCU I Goalkeeper Substitution
20:22				6 BOTEAT Shot left 9m missed
20:34	13 SALVADOR S Turnover			
21:26				7 ANDREI A Shot left wing post
21:36	79 COSTA M Turnover			
21:55				20 SZASZ A for 16 POPESCU M Empty goal
22:11				16 POPESCU M for 10 CUMPANICI S Goalkeeper back
22:16				9 GRIGORE S Shot right wing missed
23:12	66 GOMES J Goal centre 6m top right (79 COSTA M), 79.06 km/h	18 - 10	+8	
23:36				44 STANCIUC D Shot centre 9m saved top left
23:42	21 FERNANDES L Goal fast break bottom left (13 SALVADOR S), 83.63 km/h	19 - 10	+9	
24:20	13 SALVADOR S Block			25 STANESCU I Shot right 9m blocked
24:30	41 CAPDEVILLE G Turnover			9 GRIGORE S Steal
24:37				23 DEDU C for 16 POPESCU M Empty goal
24:51				10 CUMPANICI S Shot left 9m saved top centre
24:54				16 POPESCU M for 44 STANCIUC D Goalkeeper back
24:57		19 - 11	+8	20 SZASZ A Goal centre 6m top left, 88.77 km/h
25:25	26 COSTA F Goal centre 9m bottom right	20 - 11	+9	
25:39				23 DEDU C for 16 POPESCU M Empty goal
25:49		20 - 12	+8	10 CUMPANICI S Goal breakthrough middle right
25:57	13 SALVADOR S Goal empty goal bottom centre, 62.39 km/h	21 - 12	+9	
25:57				16 POPESCU M for 44 STANCIUC D Goalkeeper back
26:06				44 STANCIUC D for 16 POPESCU M Empty goal
26:16				16 POPESCU M for 44 STANCIUC D Goalkeeper back
26:16				Video Replay (Goal review) Goal
26:16		21 - 13	+8	23 DEDU C Goal left 6m top left (10 CUMPANICI S), 84.41 km/h
26:44	66 GOMES J Turnover			
26:57	66 GOMES J 7m caused			44 STANCIUC D 7m received
27:09		21 - 14	+7	44 STANCIUC D Goal Penalty shot bottom left, 90.58 km/h
27:10	99 VALÉRIO D for 41 CAPDEVILLE G Goalkeeper Substitution			
27:18	Team timeout			
27:18	41 CAPDEVILLE G for 99 VALÉRIO D Goalkeeper Substitution			
27:43	26 COSTA F Goal breakthrough bottom left, 119.40 km/h	22 - 14	+8	
28:04				23 DEDU C for 16 POPESCU M Empty goal

OFFICIAL PARTNERS



EHF PARTNERS



NATIONAL SUPPLIERS



Preliminary Round - Group B

FRI 16 JAN 2026
Start Time: 18:00

Herning

Play by Play

Match No: 8

POR 40 - 34 ROU
(23 - 15) (17 - 19)

1st HALF

Match Time	POR - Portugal	Score	Lead	ROU - Romania
28:17				9 GRIGORE S Shot right 6m post
28:19				16 POPESCU M for 23 DEDU C Goalkeeper back
28:53	79 COSTA M Goal left 9m bottom left, 100.29 km/h	23	-14	+9
29:08				44 STANCIUC D for 16 POPESCU M Empty goal
29:30		23	-15	+8
29:35				16 POPESCU M for 44 STANCIUC D Goalkeeper back
29:41	82 FRADE L Shot fast throw off saved bottom centre			
29:43				44 STANCIUC D for 16 POPESCU M Empty goal
29:55	20 NEVES M Block			44 STANCIUC D Shot left 9m blocked
30:00	41 CAPDEVILLE G Shot empty goal missed			

2nd HALF

Match Time	POR - Portugal	Score	Lead	ROU - Romania
30:00	41 CAPDEVILLE G Goalkeeper			16 POPESCU M Goalkeeper
30:35		23	-16	+7
31:07	79 COSTA M Shot centre 9m saved middle right			47 BUZLE A Goal right 9m top left, 97.84 km/h
31:40	86 BRANDAO R Goal centre 6m middle right (66 GOMES J), 64.52 km/h	24	-16	+8
32:15				23 DEDU C Shot centre 6m saved top left
32:26	8 ITURIZZA V Turnover			8 MILITARU R Steal
32:57				23 DEDU C Shot breakthrough post
33:11		24	-17	+7
33:33	66 GOMES J Turnover			2 VERES D Goal left wing bottom centre
33:42	14 SILVA R Block			17 RACOTEA D Shot centre 9m blocked
34:08		24	-18	+6
34:38	66 GOMES J Turnover			47 BUZLE A Goal left 9m top left
34:44		24	-19	+5
35:11	79 COSTA M Goal centre 9m bottom left, 100.13 km/h	25	-19	+6
35:45	8 ITURIZZA V 2-minutes suspension			
35:57				44 STANCIUC D Turnover
36:18	66 GOMES J for 41 CAPDEVILLE G Empty goal			
36:32	79 COSTA M Goal breakthrough bottom right	26	-19	+7
36:38	41 CAPDEVILLE G for 95 CAVALCANTI G Goalkeeper back			
36:46				1 IANCU I for 16 POPESCU M Goalkeeper Substitution
36:47	20 NEVES M 7m caused			23 DEDU C 7m received
36:56				44 STANCIUC D Penalty shot saved middle right
37:11		26	-20	+6
37:11				44 STANCIUC D Goal centre 6m top right
37:24	66 GOMES J for 41 CAPDEVILLE G Empty goal			
37:45	79 COSTA M Goal breakthrough bottom centre	27	-20	+7
37:47	41 CAPDEVILLE G for 66 GOMES J Goalkeeper back			
38:17				47 BUZLE A Shot left 9m saved top left
38:21				Video Replay (Goal review) No Goal
38:21				2 VERES D Shot left wing post
38:46	86 BRANDAO R Goal right 6m top right (66 GOMES J), 83.65 km/h	28	-20	+8
39:38		28	-21	+7
39:42	20 NEVES M Goal fast break middle left, 103.86 km/h	29	-21	+8
39:52	95 CAVALCANTI G Block			44 STANCIUC D Shot centre 9m blocked
40:19		29	-22	+7
40:19				2 VERES D Goal left wing bottom left (44 STANCIUC D), 89.05 km/h
41:21	26 COSTA F Shot centre 9m blocked			8 MILITARU R Block
41:28	14 SILVA R Shot centre 9m blocked			20 SZASZ A Block
41:38	26 COSTA F Goal right wing top left, 99.09 km/h	30	-22	+8

OFFICIAL PARTNERS



EHF PARTNERS



NATIONAL SUPPLIERS



Play by Play

POR 40 - 34 ROU

(23 - 15) (17 - 19)

2nd HALF

Match Time	POR - Portugal	Score Lead	ROU - Romania
42:14	95 CAVALCANTI G 7m caused		2 VERES D 7m received
42:21			44 STANCIUC D Penalty shot saved middle right
43:15	29 FERREIRA J Technical Fault		
43:26		30 - 23 +7	13 GHITA R Goal centre 9m middle right, 106.01 km/h
44:11	14 SILVA R Shot centre 6m saved middle left		
44:19		30 - 24 +6	17 RACOTEA D Goal centre 9m bottom centre
44:33	13 SALVADOR S Goal centre 6m middle left (14 SILVA R)	31 - 24 +7	
45:39		31 - 25 +6	47 BUZLE A Goal centre 9m top right
46:24	26 COSTA F Goal breakthrough bottom right	32 - 25 +7	
46:31	8 ITURIZZA V Steal		13 GHITA R Turnover
46:38	82 FRADE L Goal fast break bottom right (13 SALVADOR S)	33 - 25 +8	
47:17	82 FRADE L 2-minutes suspension		
47:17			20 SZASZ A for 1 IANCU I Empty goal
47:31			5 NISTOR I Shot right wing saved middle right
47:54		33 - 26 +7	2 VERES D Goal left wing bottom centre (6 BOTEANU T), 42.51 km/h
47:58			1 IANCU I for 44 STANCIUC D Goalkeeper back
48:38	13 SALVADOR S Goal centre 9m bottom right, 104.26 km/h	34 - 26 +8	
48:41	99 VALÉRIO D for 14 SILVA R Goalkeeper Substitution		
48:43			23 DEDUC Shot fast throw off missed
48:52	14 SILVA R for 41 CAPDEVILLE G Empty goal		
49:01	13 SALVADOR S for 99 VALÉRIO D Empty goal		
49:14	13 SALVADOR S Goal centre 9m top right, 31.11 km/h	35 - 26 +9	
49:28	99 VALÉRIO D for 14 SILVA R Goalkeeper back		
49:52		35 - 27 +8	44 STANCIUC D Goal breakthrough middle right, 74.11 km/h
50:28	26 COSTA F Shot centre 9m saved middle right		
50:55		35 - 28 +7	23 DEDUC Goal centre 6m bottom left (13 GHITA R)
51:04	Team timeout		
51:44	25 AREIA A Goal right wing bottom left (82 FRADE L), 77.63 km/h	36 - 28 +8	
52:22		36 - 29 +7	44 STANCIUC D Goal breakthrough bottom right
52:32	20 NEVES M Turnover		
53:15	Video Replay (Punishment review) Punishment		
53:15	20 NEVES M Disqualification (red card-direct)		
53:15			20 SZASZ A for 1 IANCU I Empty goal
53:27		36 - 30 +6	2 VERES D Goal left wing bottom centre (13 GHITA R), 75.69 km/h
53:30			1 IANCU I for 44 STANCIUC D Goalkeeper back
53:48	26 COSTA F for 99 VALÉRIO D Empty goal		
54:01	99 VALÉRIO D for 25 AREIA A Goalkeeper back		
54:03	79 COSTA M Shot centre 9m saved top left		
54:21			5 NISTOR I for 1 IANCU I Empty goal
54:21			Team timeout
54:37		36 - 31 +5	20 SZASZ A Goal right 6m bottom left (44 STANCIUC D), 90.80 km/h
54:39			1 IANCU I for 44 STANCIUC D Goalkeeper back
54:52	14 SILVA R for 99 VALÉRIO D Empty goal		
55:13	25 AREIA A Goal right wing top left (26 COSTA F), 50.71 km/h	37 - 31 +6	
55:22	99 VALÉRIO D for 79 COSTA M Goalkeeper back		
56:19			Video Replay (Goal review) Goal
56:19		37 - 32 +5	23 DEDUC Goal centre 6m middle right (47 BUZLE A), 73.45 km/h
56:30	21 FERNANDES L for 99 VALÉRIO D Empty goal		
56:45	26 COSTA F Goal right 9m top right, 98.55 km/h	38 - 32 +6	
56:49	99 VALÉRIO D for 20 NEVES M Goalkeeper back		
56:53		38 - 33 +5	5 NISTOR I Goal fast break bottom left (20 SZASZ A)
57:05	79 COSTA M Shot breakthrough saved middle right		

OFFICIAL PARTNERS



EHF PARTNERS



NATIONAL SUPPLIERS



Match No: 8

Play by Play
POR 40 - 34 ROU
(23 - 15) (17 - 19)

2nd HALF

Match Time	POR - Portugal	Score Lead	ROU - Romania
57:40	26 COSTA F Steal		13 GHITA R Turnover
57:45	82 FRADE L Shot fast break saved top right		
57:57		38 - 34 +4	44 STANCIUC D Goal centre 9m middle left, 99.42 km/h
58:25	82 FRADE L 7m received		47 BUZLE A 7m caused
58:35	25 AREIA A Penalty shot saved top left		
59:13	66 GOMES J Turnover		
59:20			2 VERES D Turnover Fastbreak
59:32	Team timeout		
59:48	79 COSTA M Goal left 6m top left (66 GOMES J), 86.66 km/h	39 - 34 +5	
59:50			Team timeout
59:50			13 GHITA R for 1 IANCU I Empty goal
59:58	26 COSTA F Steal		13 GHITA R Turnover
60:00	26 COSTA F Goal empty goal bottom centre, 132.27 km/h	40 - 34 +6	

OFFICIAL PARTNERS



EHF PARTNERS



NATIONAL SUPPLIERS



Empty Goal Analysis

Herning

Match No: 8

POR 40 - 34 ROU

(23 - 15) (17 - 19)

Referees: KURTAGIC Mirza (SWE) / WETTERWIK Mattias (SWE)

ATTACKS DURING OWN EMPTY GOAL SITUATION

Players on Court	Attacks		Goals		Saves		Missed		Blocked		Post		Turnovers		Scoring Efficiency		Goals Against	
	POR	ROU	POR	ROU	POR	ROU	POR	ROU	POR	ROU	POR	ROU	POR	ROU	POR	ROU	POR	ROU
7 Against 6	4	10	3	6	1	1		1		1		1		1	75	60		3
6 Against 6	2	3	2	1										2	100	33		2
Others		1		1		1										100		
Total:	6	14	5	8	1	2		1		1		1		3	83	57		5

GOALS/ATTACKS DURING OWN EMPTY GOAL SITUATION - ANALYSIS OF OCCURRENCE (in 5 min intervals)

Players on Court	1st Half												
	0-5		5-10		10-15		15-20		20-25		25-30		
	POR	ROU	POR	ROU	POR	ROU	POR	ROU	POR	ROU	POR	ROU	
7 Against 6											1/2		3/5
6 Against 6						1/3							
Others													
Total:						1/3					1/2		3/5

Players on Court	2nd Half											
	30-35		35-40		40-45		45-50		50-55		55-60	
	POR	ROU	POR	ROU	POR	ROU	POR	ROU	POR	ROU	POR	ROU
7 Against 6			1/1						0/1	2/2	2/2	0/1
6 Against 6			1/1				1/1					
Others							1/1					
Total:			2/2				1/1	1/1	0/1	2/2	2/2	0/1

GOALS/ATTACKS DURING OWN EMPTY GOAL SITUATION - ANALYSIS BY DURATION

Team	<15 sec.	15-30 sec.	30-45 sec.	45-60 sec.	>60 sec.
POR	2/2	3/4			
ROU	3/7	3/4	2/3		

SUBSTITUTION SUMMARY

Players	POR	ROU
Goalkeeper <-> Goalkeeper	3	2
Court Player <-> Goalkeeper	13	22
Court Player <-> Court Player	146	153
Total:	162	177

OFFICIAL PARTNERS



EHF PARTNERS



NATIONAL SUPPLIERS



Line-Up Analysis

Herning

Attendance: 10.908

Match No: 8

POR 40 - 34 ROU

POR - Portugal

Lineup efficiency								Time Played	GF	GA
13 SALVADOR S	14 SILVA R	23 BRANQUINHO D	25 AREIA A	26 COSTA F	41 CAPDEVILLE G	82 FRADE L	5:32	6	1	
8 ITURIZZA V	13 SALVADOR S	20 NEVES M	23 BRANQUINHO D	25 AREIA A	41 CAPDEVILLE G	82 FRADE L	3:49	4	1	
8 ITURIZZA V	13 SALVADOR S	20 NEVES M	21 FERNANDES L	26 COSTA F	41 CAPDEVILLE G	79 COSTA M	3:16	2	0	
8 ITURIZZA V	13 SALVADOR S	20 NEVES M	23 BRANQUINHO D	26 COSTA F	41 CAPDEVILLE G	82 FRADE L	3:01	1	3	
8 ITURIZZA V	13 SALVADOR S	23 BRANQUINHO D	26 COSTA F	29 FERREIRA J	82 FRADE L	99 VALÉRIO D	1:36	0	2	
13 SALVADOR S	20 NEVES M	21 FERNANDES L	26 COSTA F	41 CAPDEVILLE G	79 COSTA M	82 FRADE L	1:30	0	1	
8 ITURIZZA V	14 SILVA R	21 FERNANDES L	25 AREIA A	26 COSTA F	41 CAPDEVILLE G	79 COSTA M	1:28	2	0	
8 ITURIZZA V	20 NEVES M	29 FERREIRA J	41 CAPDEVILLE G	66 GOMES J	86 BRANDAO R	95 CAVALCANTI G	1:26	1	2	
13 SALVADOR S	14 SILVA R	26 COSTA F	29 FERREIRA J	41 CAPDEVILLE G	86 BRANDAO R	95 CAVALCANTI G	1:25	1	1	
8 ITURIZZA V	13 SALVADOR S	20 NEVES M	29 FERREIRA J	41 CAPDEVILLE G	66 GOMES J	86 BRANDAO R	1:22	0	1	
8 ITURIZZA V	13 SALVADOR S	26 COSTA F	29 FERREIRA J	41 CAPDEVILLE G	86 BRANDAO R	95 CAVALCANTI G	1:22	0	1	
8 ITURIZZA V	14 SILVA R	21 FERNANDES L	26 COSTA F	41 CAPDEVILLE G	66 GOMES J	79 COSTA M	1:20	2	0	
8 ITURIZZA V	20 NEVES M	26 COSTA F	29 FERREIRA J	41 CAPDEVILLE G	82 FRADE L	95 CAVALCANTI G	1:20	0	1	
14 SILVA R	20 NEVES M	29 FERREIRA J	41 CAPDEVILLE G	66 GOMES J	79 COSTA M	86 BRANDAO R	1:19	0	1	
21 FERNANDES L	25 AREIA A	26 COSTA F	66 GOMES J	79 COSTA M	82 FRADE L	99 VALÉRIO D	1:16	1	0	
8 ITURIZZA V	13 SALVADOR S	14 SILVA R	20 NEVES M	26 COSTA F	41 CAPDEVILLE G	79 COSTA M	1:15	1	1	
21 FERNANDES L	26 COSTA F	29 FERREIRA J	41 CAPDEVILLE G	66 GOMES J	79 COSTA M	82 FRADE L	1:08	2	0	
8 ITURIZZA V	14 SILVA R	20 NEVES M	29 FERREIRA J	41 CAPDEVILLE G	86 BRANDAO R	95 CAVALCANTI G	1:01	0	0	
8 ITURIZZA V	14 SILVA R	29 FERREIRA J	41 CAPDEVILLE G	66 GOMES J	79 COSTA M	86 BRANDAO R	0:59	1	1	
8 ITURIZZA V	13 SALVADOR S	23 BRANQUINHO D	25 AREIA A	26 COSTA F	41 CAPDEVILLE G	82 FRADE L	0:57	0	1	
8 ITURIZZA V	13 SALVADOR S	20 NEVES M	25 AREIA A	26 COSTA F	82 FRADE L	99 VALÉRIO D	0:57	0	0	
8 ITURIZZA V	13 SALVADOR S	14 SILVA R	20 NEVES M	26 COSTA F	29 FERREIRA J	41 CAPDEVILLE G	0:56	0	1	
8 ITURIZZA V	13 SALVADOR S	14 SILVA R	20 NEVES M	23 BRANQUINHO D	41 CAPDEVILLE G	82 FRADE L	0:55	0	0	
8 ITURIZZA V	13 SALVADOR S	21 FERNANDES L	25 AREIA A	26 COSTA F	41 CAPDEVILLE G	79 COSTA M	0:54	0	1	
14 SILVA R	23 BRANQUINHO D	29 FERREIRA J	41 CAPDEVILLE G	66 GOMES J	79 COSTA M	86 BRANDAO R	0:52	1	0	
8 ITURIZZA V	13 SALVADOR S	14 SILVA R	26 COSTA F	29 FERREIRA J	41 CAPDEVILLE G	86 BRANDAO R	0:52	0	0	
13 SALVADOR S	14 SILVA R	20 NEVES M	29 FERREIRA J	41 CAPDEVILLE G	66 GOMES J	86 BRANDAO R	0:49	1	0	
8 ITURIZZA V	13 SALVADOR S	14 SILVA R	23 BRANQUINHO D	26 COSTA F	41 CAPDEVILLE G	82 FRADE L	0:47	1	0	
8 ITURIZZA V	13 SALVADOR S	20 NEVES M	23 BRANQUINHO D	29 FERREIRA J	41 CAPDEVILLE G	86 BRANDAO R	0:46	0	1	
8 ITURIZZA V	14 SILVA R	20 NEVES M	29 FERREIRA J	41 CAPDEVILLE G	79 COSTA M	86 BRANDAO R	0:46	0	1	
8 ITURIZZA V	13 SALVADOR S	20 NEVES M	25 AREIA A	26 COSTA F	41 CAPDEVILLE G	79 COSTA M	0:44	0	1	
14 SILVA R	23 BRANQUINHO D	25 AREIA A	26 COSTA F	79 COSTA M	82 FRADE L	99 VALÉRIO D	0:44	1	0	
8 ITURIZZA V	13 SALVADOR S	21 FERNANDES L	25 AREIA A	26 COSTA F	82 FRADE L	99 VALÉRIO D	0:44	0	1	
14 SILVA R	21 FERNANDES L	25 AREIA A	26 COSTA F	79 COSTA M	82 FRADE L	99 VALÉRIO D	0:43	0	1	
8 ITURIZZA V	20 NEVES M	25 AREIA A	26 COSTA F	82 FRADE L	95 CAVALCANTI G	99 VALÉRIO D	0:42	0	1	
8 ITURIZZA V	14 SILVA R	23 BRANQUINHO D	26 COSTA F	29 FERREIRA J	41 CAPDEVILLE G	82 FRADE L	0:34	1	0	
8 ITURIZZA V	14 SILVA R	26 COSTA F	29 FERREIRA J	41 CAPDEVILLE G	66 GOMES J	79 COSTA M	0:31	1	0	
8 ITURIZZA V	13 SALVADOR S	20 NEVES M	26 COSTA F	79 COSTA M	82 FRADE L	99 VALÉRIO D	0:31	0	1	
20 NEVES M	25 AREIA A	26 COSTA F	79 COSTA M	82 FRADE L	95 CAVALCANTI G	99 VALÉRIO D	0:30	0	0	
8 ITURIZZA V	13 SALVADOR S	14 SILVA R	23 BRANQUINHO D	26 COSTA F	29 FERREIRA J	82 FRADE L	0:27	1	0	
8 ITURIZZA V	20 NEVES M	26 COSTA F	29 FERREIRA J	41 CAPDEVILLE G	86 BRANDAO R	95 CAVALCANTI G	0:25	0	0	
8 ITURIZZA V	13 SALVADOR S	20 NEVES M	23 BRANQUINHO D	25 AREIA A	26 COSTA F	41 CAPDEVILLE G	0:22	0	0	
13 SALVADOR S	14 SILVA R	21 FERNANDES L	41 CAPDEVILLE G	66 GOMES J	79 COSTA M	82 FRADE L	0:22	0	1	
8 ITURIZZA V	20 NEVES M	25 AREIA A	79 COSTA M	82 FRADE L	95 CAVALCANTI G	99 VALÉRIO D	0:22	0	1	
8 ITURIZZA V	14 SILVA R	20 NEVES M	29 FERREIRA J	41 CAPDEVILLE G	66 GOMES J	86 BRANDAO R	0:20	0	0	
8 ITURIZZA V	14 SILVA R	20 NEVES M	29 FERREIRA J	66 GOMES J	86 BRANDAO R	95 CAVALCANTI G	0:20	1	0	
8 ITURIZZA V	14 SILVA R	20 NEVES M	26 COSTA F	79 COSTA M	82 FRADE L	99 VALÉRIO D	0:20	0	0	
8 ITURIZZA V	13 SALVADOR S	20 NEVES M	21 FERNANDES L	25 AREIA A	41 CAPDEVILLE G	79 COSTA M	0:19	0	1	
13 SALVADOR S	21 FERNANDES L	26 COSTA F	41 CAPDEVILLE G	66 GOMES J	79 COSTA M	82 FRADE L	0:19	0	1	
14 SILVA R	20 NEVES M	21 FERNANDES L	25 AREIA A	26 COSTA F	79 COSTA M	82 FRADE L	0:19	1	0	
8 ITURIZZA V	13 SALVADOR S	20 NEVES M	26 COSTA F	29 FERREIRA J	41 CAPDEVILLE G	82 FRADE L	0:18	1	0	
8 ITURIZZA V	20 NEVES M	25 AREIA A	26 COSTA F	79 COSTA M	82 FRADE L	99 VALÉRIO D	0:18	0	0	
13 SALVADOR S	14 SILVA R	20 NEVES M	23 BRANQUINHO D	25 AREIA A	41 CAPDEVILLE G	82 FRADE L	0:17	1	0	
8 ITURIZZA V	14 SILVA R	20 NEVES M	29 FERREIRA J	66 GOMES J	79 COSTA M	86 BRANDAO R	0:16	0	0	

OFFICIAL PARTNERS



EHF PARTNERS



NATIONAL SUPPLIERS



Line-Up Analysis

Herning

Attendance: 10.908

Match No: 8

POR 40 - 34 ROU

POR - Portugal

Lineup efficiency								Time Played	GF	GA
8 ITURIZZA V	13 SALVADOR S	23 BRANQUINHO D	26 COSTA F	29 FERREIRA J	41 CAPDEVILLE G	86 BRANDAO R	0:16	1	0	
14 SILVA R	20 NEVES M	23 BRANQUINHO D	25 AREIA A	26 COSTA F	79 COSTA M	82 FRADE L	0:16	1	0	
13 SALVADOR S	14 SILVA R	23 BRANQUINHO D	26 COSTA F	29 FERREIRA J	41 CAPDEVILLE G	86 BRANDAO R	0:15	0	0	
8 ITURIZZA V	13 SALVADOR S	14 SILVA R	21 FERNANDES L	26 COSTA F	82 FRADE L	99 VALÉRIO D	0:15	0	0	
8 ITURIZZA V	13 SALVADOR S	21 FERNANDES L	23 BRANQUINHO D	26 COSTA F	41 CAPDEVILLE G	79 COSTA M	0:13	0	0	
13 SALVADOR S	14 SILVA R	20 NEVES M	26 COSTA F	41 CAPDEVILLE G	79 COSTA M	82 FRADE L	0:13	0	0	
8 ITURIZZA V	14 SILVA R	20 NEVES M	25 AREIA A	26 COSTA F	79 COSTA M	82 FRADE L	0:13	0	0	
13 SALVADOR S	20 NEVES M	23 BRANQUINHO D	25 AREIA A	26 COSTA F	41 CAPDEVILLE G	82 FRADE L	0:12	0	1	
8 ITURIZZA V	14 SILVA R	20 NEVES M	26 COSTA F	41 CAPDEVILLE G	66 GOMES J	79 COSTA M	0:11	0	1	
8 ITURIZZA V	23 BRANQUINHO D	26 COSTA F	29 FERREIRA J	41 CAPDEVILLE G	82 FRADE L	99 VALÉRIO D	0:11	0	0	
13 SALVADOR S	21 FERNANDES L	26 COSTA F	29 FERREIRA J	41 CAPDEVILLE G	79 COSTA M	82 FRADE L	0:10	0	0	
8 ITURIZZA V	13 SALVADOR S	14 SILVA R	23 BRANQUINHO D	26 COSTA F	29 FERREIRA J	41 CAPDEVILLE G	0:10	0	0	
8 ITURIZZA V	13 SALVADOR S	25 AREIA A	26 COSTA F	79 COSTA M	82 FRADE L	99 VALÉRIO D	0:10	1	0	
13 SALVADOR S	20 NEVES M	23 BRANQUINHO D	29 FERREIRA J	41 CAPDEVILLE G	79 COSTA M	86 BRANDAO R	0:09	0	0	
8 ITURIZZA V	14 SILVA R	23 BRANQUINHO D	26 COSTA F	29 FERREIRA J	82 FRADE L	99 VALÉRIO D	0:09	0	0	
13 SALVADOR S	21 FERNANDES L	26 COSTA F	66 GOMES J	79 COSTA M	82 FRADE L	99 VALÉRIO D	0:08	0	0	
14 SILVA R	20 NEVES M	25 AREIA A	26 COSTA F	79 COSTA M	82 FRADE L	99 VALÉRIO D	0:08	0	0	
14 SILVA R	21 FERNANDES L	29 FERREIRA J	41 CAPDEVILLE G	66 GOMES J	79 COSTA M	82 FRADE L	0:07	0	0	
8 ITURIZZA V	14 SILVA R	23 BRANQUINHO D	29 FERREIRA J	66 GOMES J	79 COSTA M	86 BRANDAO R	0:07	1	0	
8 ITURIZZA V	13 SALVADOR S	20 NEVES M	23 BRANQUINHO D	26 COSTA F	29 FERREIRA J	41 CAPDEVILLE G	0:07	1	0	
8 ITURIZZA V	13 SALVADOR S	14 SILVA R	20 NEVES M	26 COSTA F	79 COSTA M	82 FRADE L	0:07	0	0	
13 SALVADOR S	14 SILVA R	20 NEVES M	23 BRANQUINHO D	26 COSTA F	79 COSTA M	82 FRADE L	0:07	0	0	
8 ITURIZZA V	14 SILVA R	20 NEVES M	23 BRANQUINHO D	29 FERREIRA J	41 CAPDEVILLE G	95 CAVALCANTI G	0:06	0	0	
8 ITURIZZA V	23 BRANQUINHO D	25 AREIA A	26 COSTA F	79 COSTA M	82 FRADE L	99 VALÉRIO D	0:04	0	0	
8 ITURIZZA V	23 BRANQUINHO D	25 AREIA A	26 COSTA F	82 FRADE L	95 CAVALCANTI G	99 VALÉRIO D	0:04	0	0	
8 ITURIZZA V	13 SALVADOR S	29 FERREIRA J	41 CAPDEVILLE G	66 GOMES J	79 COSTA M	86 BRANDAO R	0:03	0	0	
13 SALVADOR S	20 NEVES M	25 AREIA A	26 COSTA F	79 COSTA M	82 FRADE L	99 VALÉRIO D	0:03	0	1	
8 ITURIZZA V	21 FERNANDES L	25 AREIA A	26 COSTA F	79 COSTA M	82 FRADE L	99 VALÉRIO D	0:03	0	0	

Score development								Time Played	G Diff.
13 SALVADOR S	14 SILVA R	23 BRANQUINHO D	25 AREIA A	26 COSTA F	41 CAPDEVILLE G	82 FRADE L	5:32	+5	
8 ITURIZZA V	13 SALVADOR S	20 NEVES M	23 BRANQUINHO D	25 AREIA A	41 CAPDEVILLE G	82 FRADE L	3:49	+3	
21 FERNANDES L	26 COSTA F	29 FERREIRA J	41 CAPDEVILLE G	66 GOMES J	79 COSTA M	82 FRADE L	1:08	+2	
8 ITURIZZA V	14 SILVA R	21 FERNANDES L	26 COSTA F	41 CAPDEVILLE G	66 GOMES J	79 COSTA M	1:20	+2	
8 ITURIZZA V	14 SILVA R	21 FERNANDES L	25 AREIA A	26 COSTA F	41 CAPDEVILLE G	79 COSTA M	1:28	+2	
8 ITURIZZA V	13 SALVADOR S	20 NEVES M	21 FERNANDES L	26 COSTA F	41 CAPDEVILLE G	79 COSTA M	3:16	+2	
8 ITURIZZA V	14 SILVA R	23 BRANQUINHO D	29 FERREIRA J	66 GOMES J	79 COSTA M	86 BRANDAO R	0:07	+1	
8 ITURIZZA V	13 SALVADOR S	20 NEVES M	23 BRANQUINHO D	26 COSTA F	29 FERREIRA J	41 CAPDEVILLE G	0:07	+1	
8 ITURIZZA V	13 SALVADOR S	25 AREIA A	26 COSTA F	79 COSTA M	82 FRADE L	99 VALÉRIO D	0:10	+1	
8 ITURIZZA V	13 SALVADOR S	23 BRANQUINHO D	26 COSTA F	29 FERREIRA J	41 CAPDEVILLE G	86 BRANDAO R	0:16	+1	
14 SILVA R	20 NEVES M	23 BRANQUINHO D	25 AREIA A	26 COSTA F	79 COSTA M	82 FRADE L	0:16	+1	
13 SALVADOR S	14 SILVA R	20 NEVES M	23 BRANQUINHO D	25 AREIA A	41 CAPDEVILLE G	82 FRADE L	0:17	+1	
8 ITURIZZA V	13 SALVADOR S	20 NEVES M	26 COSTA F	29 FERREIRA J	41 CAPDEVILLE G	82 FRADE L	0:18	+1	
14 SILVA R	20 NEVES M	21 FERNANDES L	25 AREIA A	26 COSTA F	79 COSTA M	82 FRADE L	0:19	+1	
8 ITURIZZA V	14 SILVA R	20 NEVES M	29 FERREIRA J	66 GOMES J	86 BRANDAO R	95 CAVALCANTI G	0:20	+1	
8 ITURIZZA V	13 SALVADOR S	14 SILVA R	23 BRANQUINHO D	26 COSTA F	29 FERREIRA J	82 FRADE L	0:27	+1	
8 ITURIZZA V	14 SILVA R	26 COSTA F	29 FERREIRA J	41 CAPDEVILLE G	66 GOMES J	79 COSTA M	0:31	+1	
8 ITURIZZA V	14 SILVA R	23 BRANQUINHO D	26 COSTA F	29 FERREIRA J	41 CAPDEVILLE G	82 FRADE L	0:34	+1	
14 SILVA R	23 BRANQUINHO D	25 AREIA A	26 COSTA F	79 COSTA M	82 FRADE L	99 VALÉRIO D	0:44	+1	
8 ITURIZZA V	13 SALVADOR S	14 SILVA R	23 BRANQUINHO D	26 COSTA F	41 CAPDEVILLE G	82 FRADE L	0:47	+1	
13 SALVADOR S	14 SILVA R	20 NEVES M	29 FERREIRA J	41 CAPDEVILLE G	66 GOMES J	86 BRANDAO R	0:49	+1	
14 SILVA R	23 BRANQUINHO D	29 FERREIRA J	41 CAPDEVILLE G	66 GOMES J	79 COSTA M	86 BRANDAO R	0:52	+1	
21 FERNANDES L	25 AREIA A	26 COSTA F	66 GOMES J	79 COSTA M	82 FRADE L	99 VALÉRIO D	1:16	+1	

OFFICIAL PARTNERS



EHF PARTNERS



NATIONAL SUPPLIERS



Preliminary Round - Group B

Line-Up Analysis

Herning

Attendance: 10.908

Match No: 8

POR 40 - 34 ROU

POR - Portugal

Score development								Time Played	G Diff.
8 ITURIZZA V	13 SALVADOR S	29 FERREIRA J	41 CAPDEVILLE G	66 GOMES J	79 COSTA M	86 BRANDAO R	0:03	0	
8 ITURIZZA V	21 FERNANDES L	25 AREIA A	26 COSTA F	79 COSTA M	82 FRADE L	99 VALÉRIO D	0:03	0	
8 ITURIZZA V	23 BRANQUINHO D	25 AREIA A	26 COSTA F	79 COSTA M	82 FRADE L	99 VALÉRIO D	0:04	0	
8 ITURIZZA V	23 BRANQUINHO D	25 AREIA A	26 COSTA F	82 FRADE L	95 CAVALCANTI G	99 VALÉRIO D	0:04	0	
8 ITURIZZA V	14 SILVA R	20 NEVES M	23 BRANQUINHO D	29 FERREIRA J	41 CAPDEVILLE G	95 CAVALCANTI G	0:06	0	
14 SILVA R	21 FERNANDES L	29 FERREIRA J	41 CAPDEVILLE G	66 GOMES J	79 COSTA M	82 FRADE L	0:07	0	
8 ITURIZZA V	13 SALVADOR S	14 SILVA R	20 NEVES M	26 COSTA F	79 COSTA M	82 FRADE L	0:07	0	
13 SALVADOR S	14 SILVA R	20 NEVES M	23 BRANQUINHO D	26 COSTA F	79 COSTA M	82 FRADE L	0:07	0	
13 SALVADOR S	21 FERNANDES L	26 COSTA F	66 GOMES J	79 COSTA M	82 FRADE L	99 VALÉRIO D	0:08	0	
14 SILVA R	20 NEVES M	25 AREIA A	26 COSTA F	79 COSTA M	82 FRADE L	99 VALÉRIO D	0:08	0	
13 SALVADOR S	20 NEVES M	23 BRANQUINHO D	29 FERREIRA J	41 CAPDEVILLE G	79 COSTA M	86 BRANDAO R	0:09	0	
8 ITURIZZA V	14 SILVA R	23 BRANQUINHO D	26 COSTA F	29 FERREIRA J	82 FRADE L	99 VALÉRIO D	0:09	0	
13 SALVADOR S	21 FERNANDES L	26 COSTA F	29 FERREIRA J	41 CAPDEVILLE G	79 COSTA M	82 FRADE L	0:10	0	
8 ITURIZZA V	13 SALVADOR S	14 SILVA R	23 BRANQUINHO D	26 COSTA F	29 FERREIRA J	41 CAPDEVILLE G	0:10	0	
8 ITURIZZA V	23 BRANQUINHO D	26 COSTA F	29 FERREIRA J	41 CAPDEVILLE G	82 FRADE L	99 VALÉRIO D	0:11	0	
8 ITURIZZA V	13 SALVADOR S	21 FERNANDES L	23 BRANQUINHO D	26 COSTA F	41 CAPDEVILLE G	79 COSTA M	0:13	0	
13 SALVADOR S	14 SILVA R	20 NEVES M	26 COSTA F	41 CAPDEVILLE G	79 COSTA M	82 FRADE L	0:13	0	
8 ITURIZZA V	14 SILVA R	20 NEVES M	25 AREIA A	26 COSTA F	79 COSTA M	82 FRADE L	0:13	0	
13 SALVADOR S	14 SILVA R	23 BRANQUINHO D	26 COSTA F	29 FERREIRA J	41 CAPDEVILLE G	86 BRANDAO R	0:15	0	
8 ITURIZZA V	13 SALVADOR S	14 SILVA R	21 FERNANDES L	26 COSTA F	82 FRADE L	99 VALÉRIO D	0:15	0	
8 ITURIZZA V	14 SILVA R	20 NEVES M	29 FERREIRA J	66 GOMES J	79 COSTA M	86 BRANDAO R	0:16	0	
8 ITURIZZA V	20 NEVES M	25 AREIA A	26 COSTA F	79 COSTA M	82 FRADE L	99 VALÉRIO D	0:18	0	
8 ITURIZZA V	14 SILVA R	20 NEVES M	29 FERREIRA J	41 CAPDEVILLE G	66 GOMES J	86 BRANDAO R	0:20	0	
8 ITURIZZA V	14 SILVA R	20 NEVES M	26 COSTA F	79 COSTA M	82 FRADE L	99 VALÉRIO D	0:20	0	
8 ITURIZZA V	13 SALVADOR S	20 NEVES M	23 BRANQUINHO D	25 AREIA A	26 COSTA F	41 CAPDEVILLE G	0:22	0	
8 ITURIZZA V	20 NEVES M	26 COSTA F	29 FERREIRA J	41 CAPDEVILLE G	86 BRANDAO R	95 CAVALCANTI G	0:25	0	
20 NEVES M	25 AREIA A	26 COSTA F	79 COSTA M	82 FRADE L	95 CAVALCANTI G	99 VALÉRIO D	0:30	0	
8 ITURIZZA V	13 SALVADOR S	14 SILVA R	26 COSTA F	29 FERREIRA J	41 CAPDEVILLE G	86 BRANDAO R	0:52	0	
8 ITURIZZA V	13 SALVADOR S	14 SILVA R	20 NEVES M	23 BRANQUINHO D	41 CAPDEVILLE G	82 FRADE L	0:55	0	
8 ITURIZZA V	13 SALVADOR S	20 NEVES M	25 AREIA A	26 COSTA F	82 FRADE L	99 VALÉRIO D	0:57	0	
8 ITURIZZA V	14 SILVA R	29 FERREIRA J	41 CAPDEVILLE G	66 GOMES J	79 COSTA M	86 BRANDAO R	0:59	0	
8 ITURIZZA V	14 SILVA R	20 NEVES M	29 FERREIRA J	41 CAPDEVILLE G	86 BRANDAO R	95 CAVALCANTI G	1:01	0	
8 ITURIZZA V	13 SALVADOR S	14 SILVA R	20 NEVES M	26 COSTA F	41 CAPDEVILLE G	79 COSTA M	1:15	0	
13 SALVADOR S	14 SILVA R	26 COSTA F	29 FERREIRA J	41 CAPDEVILLE G	86 BRANDAO R	95 CAVALCANTI G	1:25	0	
13 SALVADOR S	20 NEVES M	25 AREIA A	26 COSTA F	79 COSTA M	82 FRADE L	99 VALÉRIO D	0:03	-1	
8 ITURIZZA V	14 SILVA R	20 NEVES M	26 COSTA F	41 CAPDEVILLE G	66 GOMES J	79 COSTA M	0:11	-1	
13 SALVADOR S	20 NEVES M	23 BRANQUINHO D	25 AREIA A	26 COSTA F	41 CAPDEVILLE G	82 FRADE L	0:12	-1	
8 ITURIZZA V	13 SALVADOR S	20 NEVES M	21 FERNANDES L	25 AREIA A	41 CAPDEVILLE G	79 COSTA M	0:19	-1	
13 SALVADOR S	21 FERNANDES L	26 COSTA F	41 CAPDEVILLE G	66 GOMES J	79 COSTA M	82 FRADE L	0:19	-1	
13 SALVADOR S	14 SILVA R	21 FERNANDES L	41 CAPDEVILLE G	66 GOMES J	79 COSTA M	82 FRADE L	0:22	-1	
8 ITURIZZA V	20 NEVES M	25 AREIA A	79 COSTA M	82 FRADE L	95 CAVALCANTI G	99 VALÉRIO D	0:22	-1	
8 ITURIZZA V	13 SALVADOR S	20 NEVES M	26 COSTA F	79 COSTA M	82 FRADE L	99 VALÉRIO D	0:31	-1	
8 ITURIZZA V	20 NEVES M	25 AREIA A	26 COSTA F	82 FRADE L	95 CAVALCANTI G	99 VALÉRIO D	0:42	-1	
14 SILVA R	21 FERNANDES L	25 AREIA A	26 COSTA F	79 COSTA M	82 FRADE L	99 VALÉRIO D	0:43	-1	
8 ITURIZZA V	13 SALVADOR S	20 NEVES M	25 AREIA A	26 COSTA F	41 CAPDEVILLE G	79 COSTA M	0:44	-1	
8 ITURIZZA V	13 SALVADOR S	21 FERNANDES L	25 AREIA A	26 COSTA F	82 FRADE L	99 VALÉRIO D	0:44	-1	
8 ITURIZZA V	13 SALVADOR S	20 NEVES M	23 BRANQUINHO D	29 FERREIRA J	41 CAPDEVILLE G	86 BRANDAO R	0:46	-1	
8 ITURIZZA V	14 SILVA R	20 NEVES M	29 FERREIRA J	41 CAPDEVILLE G	79 COSTA M	86 BRANDAO R	0:46	-1	
8 ITURIZZA V	13 SALVADOR S	21 FERNANDES L	25 AREIA A	26 COSTA F	41 CAPDEVILLE G	79 COSTA M	0:54	-1	
8 ITURIZZA V	13 SALVADOR S	14 SILVA R	20 NEVES M	26 COSTA F	29 FERREIRA J	41 CAPDEVILLE G	0:56	-1	
8 ITURIZZA V	13 SALVADOR S	23 BRANQUINHO D	25 AREIA A	26 COSTA F	41 CAPDEVILLE G	82 FRADE L	0:57	-1	
14 SILVA R	20 NEVES M	29 FERREIRA J	41 CAPDEVILLE G	66 GOMES J	79 COSTA M	86 BRANDAO R	1:19	-1	
8 ITURIZZA V	20 NEVES M	26 COSTA F	29 FERREIRA J	41 CAPDEVILLE G	82 FRADE L	95 CAVALCANTI G	1:20	-1	
8 ITURIZZA V	13 SALVADOR S	20 NEVES M	29 FERREIRA J	41 CAPDEVILLE G	66 GOMES J	86 BRANDAO R	1:22	-1	

OFFICIAL PARTNERS



EHF PARTNERS



NATIONAL SUPPLIERS



Line-Up Analysis

Herning

Attendance: 10.908

Match No: 8

POR 40 - 34 ROU

POR - Portugal

Score development								Time Played	G Diff.
8 ITURIZZA V	13 SALVADOR S	26 COSTA F	29 FERREIRA J	41 CAPDEVILLE G	86 BRANDAO R	95 CAVALCANTI G		1:22	-1
8 ITURIZZA V	20 NEVES M	29 FERREIRA J	41 CAPDEVILLE G	66 GOMES J	86 BRANDAO R	95 CAVALCANTI G		1:26	-1
13 SALVADOR S	20 NEVES M	21 FERNANDES L	26 COSTA F	41 CAPDEVILLE G	79 COSTA M	82 FRADE L		1:30	-1
8 ITURIZZA V	13 SALVADOR S	23 BRANQUINHO D	26 COSTA F	29 FERREIRA J	82 FRADE L	99 VALÉRIO D		1:36	-2
8 ITURIZZA V	13 SALVADOR S	20 NEVES M	23 BRANQUINHO D	26 COSTA F	41 CAPDEVILLE G	82 FRADE L		3:01	-2

Empty Goal								Time Played	GF	GA
8 ITURIZZA V	13 SALVADOR S	14 SILVA R	23 BRANQUINHO D	26 COSTA F	29 FERREIRA J	82 FRADE L		0:27	1	0
8 ITURIZZA V	14 SILVA R	20 NEVES M	29 FERREIRA J	66 GOMES J	86 BRANDAO R	95 CAVALCANTI G		0:20	1	0
14 SILVA R	20 NEVES M	21 FERNANDES L	25 AREIA A	26 COSTA F	79 COSTA M	82 FRADE L		0:19	1	0
8 ITURIZZA V	14 SILVA R	20 NEVES M	29 FERREIRA J	66 GOMES J	79 COSTA M	86 BRANDAO R		0:16	0	0
14 SILVA R	20 NEVES M	23 BRANQUINHO D	25 AREIA A	26 COSTA F	79 COSTA M	82 FRADE L		0:16	1	0
8 ITURIZZA V	14 SILVA R	20 NEVES M	25 AREIA A	26 COSTA F	79 COSTA M	82 FRADE L		0:13	0	0
8 ITURIZZA V	14 SILVA R	23 BRANQUINHO D	26 COSTA F	29 FERREIRA J	82 FRADE L	99 VALÉRIO D		0:09	0	0
8 ITURIZZA V	14 SILVA R	23 BRANQUINHO D	29 FERREIRA J	66 GOMES J	79 COSTA M	86 BRANDAO R		0:07	1	0
8 ITURIZZA V	13 SALVADOR S	14 SILVA R	20 NEVES M	26 COSTA F	79 COSTA M	82 FRADE L		0:07	0	0
13 SALVADOR S	14 SILVA R	20 NEVES M	23 BRANQUINHO D	26 COSTA F	79 COSTA M	82 FRADE L		0:07	0	0

OFFICIAL PARTNERS



EHF PARTNERS



NATIONAL SUPPLIERS



Line-Up Analysis

Herning

Attendance: 10.908

Match No: 8

POR 40 - 34 ROU

ROU - Romania

Lineup efficiency							Time Played	GF	GA
1 IANCU I	2 VERES D	5 NISTOR I	8 MILITARU R	17 RACOTE A	20 SZASZ A	47 BUZLE A	6:24	3	7
1 IANCU I	7 ANDREI A	9 GRIGORE S	13 GHITA R	20 SZASZ A	44 STANCIUC D	47 BUZLE A	6:05	3	5
1 IANCU I	7 ANDREI A	8 MILITARU R	9 GRIGORE S	13 GHITA R	20 SZASZ A	47 BUZLE A	4:47	1	3
1 IANCU I	2 VERES D	5 NISTOR I	13 GHITA R	23 DEDU C	44 STANCIUC D	47 BUZLE A	4:42	5	0
2 VERES D	5 NISTOR I	8 MILITARU R	16 POPESCU M	17 RACOTE A	20 SZASZ A	47 BUZLE A	2:35	1	2
1 IANCU I	2 VERES D	8 MILITARU R	17 RACOTE A	20 SZASZ A	23 DEDU C	47 BUZLE A	2:33	0	2
7 ANDREI A	8 MILITARU R	9 GRIGORE S	13 GHITA R	16 POPESCU M	20 SZASZ A	47 BUZLE A	2:11	1	2
7 ANDREI A	8 MILITARU R	9 GRIGORE S	16 POPESCU M	20 SZASZ A	25 STANESCU I	44 STANCIUC D	1:57	0	2
1 IANCU I	6 BOTE A T	7 ANDREI A	9 GRIGORE S	23 DEDU C	25 STANESCU I	44 STANCIUC D	1:52	3	1
1 IANCU I	2 VERES D	5 NISTOR I	8 MILITARU R	20 SZASZ A	44 STANCIUC D	47 BUZLE A	1:43	0	0
1 IANCU I	7 ANDREI A	8 MILITARU R	9 GRIGORE S	13 GHITA R	17 RACOTE A	47 BUZLE A	1:41	0	2
1 IANCU I	2 VERES D	8 MILITARU R	17 RACOTE A	20 SZASZ A	44 STANCIUC D	47 BUZLE A	1:36	0	1
1 IANCU I	6 BOTE A T	7 ANDREI A	8 MILITARU R	9 GRIGORE S	17 RACOTE A	25 STANESCU I	1:27	0	3
2 VERES D	5 NISTOR I	13 GHITA R	20 SZASZ A	23 DEDU C	44 STANCIUC D	47 BUZLE A	1:24	3	1
2 VERES D	5 NISTOR I	13 GHITA R	16 POPESCU M	23 DEDU C	44 STANCIUC D	47 BUZLE A	1:22	1	0
2 VERES D	5 NISTOR I	8 MILITARU R	13 GHITA R	16 POPESCU M	17 RACOTE A	47 BUZLE A	1:17	2	0
2 VERES D	5 NISTOR I	13 GHITA R	16 POPESCU M	20 SZASZ A	44 STANCIUC D	47 BUZLE A	1:04	0	1
7 ANDREI A	9 GRIGORE S	13 GHITA R	20 SZASZ A	23 DEDU C	44 STANCIUC D	47 BUZLE A	0:59	1	0
1 IANCU I	6 BOTE A T	7 ANDREI A	8 MILITARU R	9 GRIGORE S	23 DEDU C	25 STANESCU I	0:57	0	0
1 IANCU I	6 BOTE A T	7 ANDREI A	9 GRIGORE S	13 GHITA R	23 DEDU C	44 STANCIUC D	0:55	0	0
7 ANDREI A	9 GRIGORE S	10 CUM PANICI S	16 POPESCU M	23 DEDU C	25 STANESCU I	44 STANCIUC D	0:50	0	0
7 ANDREI A	8 MILITARU R	9 GRIGORE S	13 GHITA R	17 RACOTE A	23 DEDU C	47 BUZLE A	0:47	0	2
7 ANDREI A	9 GRIGORE S	10 CUM PANICI S	13 GHITA R	20 SZASZ A	23 DEDU C	44 STANCIUC D	0:45	1	1
1 IANCU I	2 VERES D	5 NISTOR I	8 MILITARU R	17 RACOTE A	20 SZASZ A	23 DEDU C	0:40	0	1
1 IANCU I	2 VERES D	13 GHITA R	17 RACOTE A	23 DEDU C	44 STANCIUC D	47 BUZLE A	0:35	1	0
7 ANDREI A	8 MILITARU R	9 GRIGORE S	10 CUM PANICI S	13 GHITA R	16 POPESCU M	20 SZASZ A	0:31	0	1
1 IANCU I	2 VERES D	5 NISTOR I	13 GHITA R	20 SZASZ A	44 STANCIUC D	47 BUZLE A	0:28	1	0
1 IANCU I	2 VERES D	5 NISTOR I	13 GHITA R	17 RACOTE A	20 SZASZ A	47 BUZLE A	0:28	0	1
7 ANDREI A	8 MILITARU R	9 GRIGORE S	13 GHITA R	17 RACOTE A	23 DEDU C	44 STANCIUC D	0:25	0	0
1 IANCU I	2 VERES D	5 NISTOR I	17 RACOTE A	20 SZASZ A	44 STANCIUC D	47 BUZLE A	0:25	0	0
1 IANCU I	7 ANDREI A	9 GRIGORE S	13 GHITA R	23 DEDU C	44 STANCIUC D	47 BUZLE A	0:24	0	0
6 BOTE A T	7 ANDREI A	9 GRIGORE S	13 GHITA R	17 RACOTE A	23 DEDU C	44 STANCIUC D	0:24	1	1
1 IANCU I	7 ANDREI A	8 MILITARU R	9 GRIGORE S	13 GHITA R	44 STANCIUC D	47 BUZLE A	0:20	1	0
7 ANDREI A	9 GRIGORE S	13 GHITA R	16 POPESCU M	20 SZASZ A	44 STANCIUC D	47 BUZLE A	0:19	1	0
1 IANCU I	2 VERES D	5 NISTOR I	8 MILITARU R	23 DEDU C	44 STANCIUC D	47 BUZLE A	0:19	0	0
6 BOTE A T	7 ANDREI A	8 MILITARU R	9 GRIGORE S	16 POPESCU M	17 RACOTE A	25 STANESCU I	0:18	0	0
1 IANCU I	2 VERES D	13 GHITA R	20 SZASZ A	23 DEDU C	44 STANCIUC D	47 BUZLE A	0:18	1	0
1 IANCU I	2 VERES D	8 MILITARU R	13 GHITA R	23 DEDU C	44 STANCIUC D	47 BUZLE A	0:17	0	1
1 IANCU I	2 VERES D	5 NISTOR I	13 GHITA R	17 RACOTE A	23 DEDU C	47 BUZLE A	0:17	0	0
7 ANDREI A	9 GRIGORE S	10 CUM PANICI S	20 SZASZ A	23 DEDU C	25 STANESCU I	44 STANCIUC D	0:16	0	0
7 ANDREI A	9 GRIGORE S	10 CUM PANICI S	13 GHITA R	16 POPESCU M	20 SZASZ A	44 STANCIUC D	0:14	0	0
1 IANCU I	7 ANDREI A	9 GRIGORE S	13 GHITA R	17 RACOTE A	44 STANCIUC D	47 BUZLE A	0:13	1	0
7 ANDREI A	9 GRIGORE S	10 CUM PANICI S	13 GHITA R	16 POPESCU M	20 SZASZ A	23 DEDU C	0:13	1	0
2 VERES D	5 NISTOR I	8 MILITARU R	16 POPESCU M	20 SZASZ A	23 DEDU C	47 BUZLE A	0:13	0	0
1 IANCU I	2 VERES D	13 GHITA R	17 RACOTE A	20 SZASZ A	44 STANCIUC D	47 BUZLE A	0:12	0	0
7 ANDREI A	8 MILITARU R	9 GRIGORE S	10 CUM PANICI S	16 POPESCU M	17 RACOTE A	25 STANESCU I	0:11	0	0
7 ANDREI A	9 GRIGORE S	16 POPESCU M	20 SZASZ A	23 DEDU C	25 STANESCU I	44 STANCIUC D	0:11	0	0
7 ANDREI A	9 GRIGORE S	10 CUM PANICI S	16 POPESCU M	20 SZASZ A	25 STANESCU I	44 STANCIUC D	0:10	0	0
2 VERES D	5 NISTOR I	8 MILITARU R	16 POPESCU M	23 DEDU C	44 STANCIUC D	47 BUZLE A	0:10	0	0
1 IANCU I	2 VERES D	8 MILITARU R	20 SZASZ A	23 DEDU C	44 STANCIUC D	47 BUZLE A	0:10	1	0
1 IANCU I	2 VERES D	5 NISTOR I	8 MILITARU R	20 SZASZ A	23 DEDU C	47 BUZLE A	0:10	0	0
1 IANCU I	2 VERES D	5 NISTOR I	8 MILITARU R	17 RACOTE A	23 DEDU C	47 BUZLE A	0:10	0	0
8 MILITARU R	9 GRIGORE S	13 GHITA R	16 POPESCU M	20 SZASZ A	23 DEDU C	47 BUZLE A	0:08	0	0
1 IANCU I	2 VERES D	5 NISTOR I	13 GHITA R	20 SZASZ A	23 DEDU C	47 BUZLE A	0:08	0	0

OFFICIAL PARTNERS



EHF PARTNERS



NATIONAL SUPPLIERS



Line-Up Analysis

Herning

Attendance: 10.908

Match No: 8

POR 40 - 34 ROU

ROU - Romania

Lineup efficiency							Time Played	GF	GA
8 MILITARU R	9 GRIGORE S	13 GHITA R	16 POPESCU M	20 SZASZ A	44 STANCIUC D	47 BUZLE A	0:07	0	0
1 IANCU I	2 VERES D	5 NISTOR I	8 MILITARU R	20 SZASZ A	23 DEDU C	44 STANCIUC D	0:07	0	0
1 IANCU I	6 BOTE A T	7 ANDREI A	9 GRIGORE S	17 RACOTE A D	25 STANESCU I	44 STANCIUC D	0:05	0	0
6 BOTE A T	7 ANDREI A	8 MILITARU R	9 GRIGORE S	16 POPESCU M	23 DEDU C	25 STANESCU I	0:05	0	0
7 ANDREI A	9 GRIGORE S	10 CUM PANICI S	16 POPESCU M	17 RACOTE A D	25 STANESCU I	44 STANCIUC D	0:05	0	0
2 VERES D	5 NISTOR I	8 MILITARU R	13 GHITA R	16 POPESCU M	23 DEDU C	47 BUZLE A	0:05	0	0
6 BOTE A T	7 ANDREI A	9 GRIGORE S	16 POPESCU M	23 DEDU C	25 STANESCU I	44 STANCIUC D	0:04	0	0
7 ANDREI A	8 MILITARU R	9 GRIGORE S	10 CUM PANICI S	16 POPESCU M	20 SZASZ A	25 STANESCU I	0:04	0	0
1 IANCU I	2 VERES D	5 NISTOR I	20 SZASZ A	23 DEDU C	44 STANCIUC D	47 BUZLE A	0:04	0	0
1 IANCU I	2 VERES D	5 NISTOR I	8 MILITARU R	13 GHITA R	20 SZASZ A	23 DEDU C	0:04	0	0

Score development							Time Played	G Diff.
1 IANCU I	2 VERES D	5 NISTOR I	13 GHITA R	23 DEDU C	44 STANCIUC D	47 BUZLE A	4:42	+5
2 VERES D	5 NISTOR I	8 MILITARU R	13 GHITA R	16 POPESCU M	17 RACOTE A D	47 BUZLE A	1:17	+2
2 VERES D	5 NISTOR I	13 GHITA R	20 SZASZ A	23 DEDU C	44 STANCIUC D	47 BUZLE A	1:24	+2
1 IANCU I	6 BOTE A T	7 ANDREI A	9 GRIGORE S	23 DEDU C	25 STANESCU I	44 STANCIUC D	1:52	+2
1 IANCU I	2 VERES D	8 MILITARU R	20 SZASZ A	23 DEDU C	44 STANCIUC D	47 BUZLE A	0:10	+1
1 IANCU I	7 ANDREI A	9 GRIGORE S	13 GHITA R	17 RACOTE A D	44 STANCIUC D	47 BUZLE A	0:13	+1
7 ANDREI A	9 GRIGORE S	10 CUM PANICI S	13 GHITA R	16 POPESCU M	20 SZASZ A	23 DEDU C	0:13	+1
1 IANCU I	2 VERES D	13 GHITA R	20 SZASZ A	23 DEDU C	44 STANCIUC D	47 BUZLE A	0:18	+1
7 ANDREI A	9 GRIGORE S	13 GHITA R	16 POPESCU M	20 SZASZ A	44 STANCIUC D	47 BUZLE A	0:19	+1
1 IANCU I	7 ANDREI A	8 MILITARU R	9 GRIGORE S	13 GHITA R	44 STANCIUC D	47 BUZLE A	0:20	+1
1 IANCU I	2 VERES D	5 NISTOR I	13 GHITA R	20 SZASZ A	44 STANCIUC D	47 BUZLE A	0:28	+1
1 IANCU I	2 VERES D	13 GHITA R	17 RACOTE A D	23 DEDU C	44 STANCIUC D	47 BUZLE A	0:35	+1
7 ANDREI A	9 GRIGORE S	13 GHITA R	20 SZASZ A	23 DEDU C	44 STANCIUC D	47 BUZLE A	0:59	+1
2 VERES D	5 NISTOR I	13 GHITA R	16 POPESCU M	23 DEDU C	44 STANCIUC D	47 BUZLE A	1:22	+1
6 BOTE A T	7 ANDREI A	9 GRIGORE S	16 POPESCU M	23 DEDU C	25 STANESCU I	44 STANCIUC D	0:04	0
7 ANDREI A	8 MILITARU R	9 GRIGORE S	10 CUM PANICI S	16 POPESCU M	20 SZASZ A	25 STANESCU I	0:04	0
1 IANCU I	2 VERES D	5 NISTOR I	20 SZASZ A	23 DEDU C	44 STANCIUC D	47 BUZLE A	0:04	0
1 IANCU I	2 VERES D	5 NISTOR I	8 MILITARU R	13 GHITA R	20 SZASZ A	23 DEDU C	0:04	0
1 IANCU I	6 BOTE A T	7 ANDREI A	9 GRIGORE S	17 RACOTE A D	25 STANESCU I	44 STANCIUC D	0:05	0
6 BOTE A T	7 ANDREI A	8 MILITARU R	9 GRIGORE S	16 POPESCU M	23 DEDU C	25 STANESCU I	0:05	0
7 ANDREI A	9 GRIGORE S	10 CUM PANICI S	16 POPESCU M	17 RACOTE A D	25 STANESCU I	44 STANCIUC D	0:05	0
2 VERES D	5 NISTOR I	8 MILITARU R	13 GHITA R	16 POPESCU M	23 DEDU C	47 BUZLE A	0:05	0
8 MILITARU R	9 GRIGORE S	13 GHITA R	16 POPESCU M	20 SZASZ A	44 STANCIUC D	47 BUZLE A	0:07	0
1 IANCU I	2 VERES D	5 NISTOR I	8 MILITARU R	20 SZASZ A	23 DEDU C	44 STANCIUC D	0:07	0
8 MILITARU R	9 GRIGORE S	13 GHITA R	16 POPESCU M	20 SZASZ A	23 DEDU C	47 BUZLE A	0:08	0
1 IANCU I	2 VERES D	5 NISTOR I	13 GHITA R	20 SZASZ A	23 DEDU C	47 BUZLE A	0:08	0
7 ANDREI A	9 GRIGORE S	10 CUM PANICI S	16 POPESCU M	20 SZASZ A	25 STANESCU I	44 STANCIUC D	0:10	0
2 VERES D	5 NISTOR I	8 MILITARU R	16 POPESCU M	23 DEDU C	44 STANCIUC D	47 BUZLE A	0:10	0
1 IANCU I	2 VERES D	5 NISTOR I	8 MILITARU R	20 SZASZ A	23 DEDU C	47 BUZLE A	0:10	0
1 IANCU I	2 VERES D	5 NISTOR I	8 MILITARU R	17 RACOTE A D	23 DEDU C	47 BUZLE A	0:10	0
7 ANDREI A	8 MILITARU R	9 GRIGORE S	10 CUM PANICI S	16 POPESCU M	17 RACOTE A D	25 STANESCU I	0:11	0
7 ANDREI A	9 GRIGORE S	16 POPESCU M	20 SZASZ A	23 DEDU C	25 STANESCU I	44 STANCIUC D	0:11	0
1 IANCU I	2 VERES D	13 GHITA R	17 RACOTE A D	20 SZASZ A	44 STANCIUC D	47 BUZLE A	0:12	0
2 VERES D	5 NISTOR I	8 MILITARU R	16 POPESCU M	20 SZASZ A	23 DEDU C	47 BUZLE A	0:13	0
7 ANDREI A	9 GRIGORE S	10 CUM PANICI S	13 GHITA R	16 POPESCU M	20 SZASZ A	44 STANCIUC D	0:14	0
7 ANDREI A	9 GRIGORE S	10 CUM PANICI S	20 SZASZ A	23 DEDU C	25 STANESCU I	44 STANCIUC D	0:16	0
1 IANCU I	2 VERES D	5 NISTOR I	13 GHITA R	17 RACOTE A D	23 DEDU C	47 BUZLE A	0:17	0
6 BOTE A T	7 ANDREI A	8 MILITARU R	9 GRIGORE S	16 POPESCU M	17 RACOTE A D	25 STANESCU I	0:18	0
1 IANCU I	2 VERES D	5 NISTOR I	8 MILITARU R	23 DEDU C	44 STANCIUC D	47 BUZLE A	0:19	0
1 IANCU I	7 ANDREI A	9 GRIGORE S	13 GHITA R	23 DEDU C	44 STANCIUC D	47 BUZLE A	0:24	0
6 BOTE A T	7 ANDREI A	9 GRIGORE S	13 GHITA R	17 RACOTE A D	23 DEDU C	44 STANCIUC D	0:24	0

OFFICIAL PARTNERS



EHF PARTNERS



NATIONAL SUPPLIERS



Line-Up Analysis

Herning

Attendance: 10.908

Match No: 8

POR 40 - 34 ROU

ROU - Romania

Score development								Time Played	G Diff.
7 ANDREI A	8 MILITARU R	9 GRIGORE S	13 GHITA R	17 RACOTEA D	23 DEDU C	44 STANCIUC D	0:25	0	
1 IANCU I	2 VERES D	5 NISTOR I	17 RACOTEA D	20 SZASZ A	44 STANCIUC D	47 BUZLE A	0:25	0	
7 ANDREI A	9 GRIGORE S	10 CUMPANICI S	13 GHITA R	20 SZASZ A	23 DEDU C	44 STANCIUC D	0:45	0	
7 ANDREI A	9 GRIGORE S	10 CUMPANICI S	16 POPESCU M	23 DEDU C	25 STANESCU I	44 STANCIUC D	0:50	0	
1 IANCU I	6 BOTEAT	7 ANDREI A	9 GRIGORE S	13 GHITA R	23 DEDU C	44 STANCIUC D	0:55	0	
1 IANCU I	6 BOTEAT	7 ANDREI A	8 MILITARU R	9 GRIGORE S	23 DEDU C	25 STANESCU I	0:57	0	
1 IANCU I	2 VERES D	5 NISTOR I	8 MILITARU R	20 SZASZ A	44 STANCIUC D	47 BUZLE A	1:43	0	
1 IANCU I	2 VERES D	8 MILITARU R	13 GHITA R	23 DEDU C	44 STANCIUC D	47 BUZLE A	0:17	-1	
1 IANCU I	2 VERES D	5 NISTOR I	13 GHITA R	17 RACOTEA D	20 SZASZ A	47 BUZLE A	0:28	-1	
7 ANDREI A	8 MILITARU R	9 GRIGORE S	10 CUMPANICI S	13 GHITA R	16 POPESCU M	20 SZASZ A	0:31	-1	
1 IANCU I	2 VERES D	5 NISTOR I	8 MILITARU R	17 RACOTEA D	20 SZASZ A	23 DEDU C	0:40	-1	
2 VERES D	5 NISTOR I	13 GHITA R	16 POPESCU M	20 SZASZ A	44 STANCIUC D	47 BUZLE A	1:04	-1	
1 IANCU I	2 VERES D	8 MILITARU R	17 RACOTEA D	20 SZASZ A	44 STANCIUC D	47 BUZLE A	1:36	-1	
7 ANDREI A	8 MILITARU R	9 GRIGORE S	13 GHITA R	16 POPESCU M	20 SZASZ A	47 BUZLE A	2:11	-1	
2 VERES D	5 NISTOR I	8 MILITARU R	16 POPESCU M	17 RACOTEA D	20 SZASZ A	47 BUZLE A	2:35	-1	
7 ANDREI A	8 MILITARU R	9 GRIGORE S	13 GHITA R	17 RACOTEA D	23 DEDU C	47 BUZLE A	0:47	-2	
1 IANCU I	7 ANDREI A	8 MILITARU R	9 GRIGORE S	13 GHITA R	17 RACOTEA D	47 BUZLE A	1:41	-2	
7 ANDREI A	8 MILITARU R	9 GRIGORE S	16 POPESCU M	20 SZASZ A	25 STANESCU I	44 STANCIUC D	1:57	-2	
1 IANCU I	2 VERES D	8 MILITARU R	17 RACOTEA D	20 SZASZ A	23 DEDU C	47 BUZLE A	2:33	-2	
1 IANCU I	7 ANDREI A	8 MILITARU R	9 GRIGORE S	13 GHITA R	20 SZASZ A	47 BUZLE A	4:47	-2	
1 IANCU I	7 ANDREI A	9 GRIGORE S	13 GHITA R	20 SZASZ A	44 STANCIUC D	47 BUZLE A	6:05	-2	
1 IANCU I	6 BOTEAT	7 ANDREI A	8 MILITARU R	9 GRIGORE S	17 RACOTEA D	25 STANESCU I	1:27	-3	
1 IANCU I	2 VERES D	5 NISTOR I	8 MILITARU R	17 RACOTEA D	20 SZASZ A	47 BUZLE A	6:24	-4	

Empty Goal								Time Played	GF	GA
2 VERES D	5 NISTOR I	13 GHITA R	20 SZASZ A	23 DEDU C	44 STANCIUC D	47 BUZLE A	1:24	3	1	
7 ANDREI A	9 GRIGORE S	13 GHITA R	20 SZASZ A	23 DEDU C	44 STANCIUC D	47 BUZLE A	0:59	1	0	
7 ANDREI A	8 MILITARU R	9 GRIGORE S	13 GHITA R	17 RACOTEA D	23 DEDU C	47 BUZLE A	0:47	0	2	
7 ANDREI A	9 GRIGORE S	10 CUMPANICI S	13 GHITA R	20 SZASZ A	23 DEDU C	44 STANCIUC D	0:45	1	1	
7 ANDREI A	8 MILITARU R	9 GRIGORE S	13 GHITA R	17 RACOTEA D	23 DEDU C	44 STANCIUC D	0:25	0	0	
6 BOTEAT	7 ANDREI A	9 GRIGORE S	13 GHITA R	17 RACOTEA D	23 DEDU C	44 STANCIUC D	0:24	1	1	
7 ANDREI A	9 GRIGORE S	10 CUMPANICI S	20 SZASZ A	23 DEDU C	25 STANESCU I	44 STANCIUC D	0:16	0	0	

Legend:
G Diff. Goals Difference

OFFICIAL PARTNERS



EHF PARTNERS



NATIONAL SUPPLIERS

