

Cumulative Statistics

SWE - Sweden After 8 matches

Coach: SOLBERG Glenn

Time outs: 14 Avg. Time outs: 1.8

No	Name	MP	Total			All Goals / Shots							Punishments				Offence			Defence			TP			
			Goals	Shots	%	7mP	7m%	6mC	Wing	BT	FB	FTO	9m	YC	RC	2M	2+2	AS	R7	TO/TF	ST	BS		P7		
1	JOHANNESSON Peter	5															1								1:32:00	
2	CARLSBOGARD Jonathan	8	15	30	50			3/6	0/3	6/9	1/2		5/10			2	27	3	5 / 4	4	3	3			5:54:07	
3	PERSSON Isak	2	4	4	100				4/4								1		/ 1						52:28	
4	MELLEGARD Emil	8	8	13	62				3/6		5/7						2		/ 1	1					2:13:39	
5	DARJ Max	4	5	10	50			3/6	2/4										/ 1			1			1:21:53	
6	MOLLER Felix	5																							1:01	
10	EKBERG Niclas	4	7	11	64	0/1	0		5/6		2/4						2	1	/ 1						2:19:25	
11	PETTERSSON Daniel	3	3	3	100			1/1	2/2							1	1						1		48:34	
12	PALICKA Andreas	7	3	4	75						3/3	0/1						2		5					4:42:19	
15	WANNE Hampus	7	41	50	82	20/22	91	6/6	9/14		6/7	0/1				2		3	2 / 1	3		1			5:13:23	
18	PETTERSSON Fredric	8	10	13	77			9/11	1/2							1		3	1 / 3	2	1	3			2:29:59	
19	CLAAR Felix	6	16	23	70			11/16	1/1	3/4	1/1	0/1				1		16	2 / 1	1	6				3:10:37	
22	PELLAS Lucas	1	7	8	88	4/4	100		3/3		0/1								/ 1				1		24:21	
23	LAGERGREN Albin	8	19	27	70			5/6	5/6	3/7	4/4	2/4				3		11	3 / 4	4	1	3			4:37:55	
24	GOTTFRIDSSON Jim	8	33	48	69			8/14	2/3	14/18		9/13	1		1		47	7 / 1	2	1	2				4:30:47	
26	PERSSON Linus	1	1	2	50					1/1		0/1				1			1						20:36	
28	EDVARDSSON Jonathan	2																								
30	THULIN Tobias	5																							1:23:01	
32	BERGENDAHL Oscar	8	12	15	80			11/14	1/1							2	3	9	3 / 3	2	2	2			4:31:45	
33	SANDELL Lukas	7	16	30	53			5/7	6/9	2/3		3/11	1				9	1 / 5	5	1					3:04:57	
42	JOHANSSON Eric	7	8	15	53			3/5	1/2	1/1		3/7				1		11	3 / 2	1	1				1:46:42	
49	WALLINIUS Karl	8	4	6	67					1/1		3/5				3		1	1 / 1				3		56:36	
62	CHRINTZ Valter	6	13	17	76	2/2	100	1/1	8/12		2/2							1	1	1		1			3:43:55	
67	OLSSON Hampus																									
Team																			2							
Totals			225	329	68	26/29	90	66/93	53/78	31/44	24/31	0/0	25/54	4	0	19	0	142	29	31 / 30	32	9	21			

No	Name	MP	Total			All Saves / Shots										
			Saves	Shots	%	7mP	7m%	6mC	Wing	BT	FB	FTO	9m	9m%	NS	NS%
1	JOHANNESSON Peter	5	20	56	36	1/5	20	4/15	6/13	2/5	0/3	0/1	7/14	50	12/33	36
12	PALICKA Andreas	7	54	178	30	1/10	10	16/60	15/47	2/10	1/9	19/42	45	33/117	28	
30	THULIN Tobias	5	16	47	34	1/5	20	2/10	8/14	4/6	0/4	1/8	13	14/30	47	
EG				4												
Totals			91	286	32	3/20	15	23/88	29/74	8/21	1/18	0/1	27/64	42	60/183	33

Attacks

Team	All		Player Majority		Player Minority		Position Attacks		FB		Ind. FB		Team FB		TO	TO %
	G/Att.	%	G/Att.	%	G/Att.	%	G/Att.	%	G/Att.	%	G/Att.	%	G/Att.	%		
SWE	225/378	60	32/48	67	13/23	57	201/343	59	24/35	69	1/2	50	23/33	70	61	16

Legend:	
%	Efficiency
9m	9-metre Shots
FB	Fast Breaks
N/A	not applicable
ST	Steals
2M	2-Minute Suspensions
AS	Assists
FTO	Fast Throw off
NS	Near Shots
TO/TF	Turnovers/Technical Faults
2+2	2+2 Minute Suspensions
BS	Blocked Shots
G/Att.	Goals/Attacks
P7	Penalty 7-metre Fouls
TP	Time Played
6mC	6-metre Centre Shots
BT	Breakthroughs
Ind.	Individual
R7	Received 7-metre Fouls
Wing	Wing Shots
7mP	7-metre Penalty Shots
EG	Empty Goal
MP	Matches Played
RC	Red Cards
YC	Yellow Cards

Cumulative Statistics

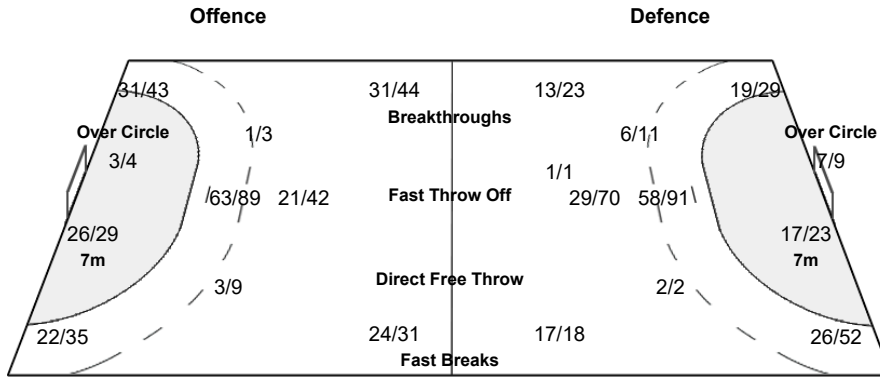
SWE - Sweden After 8 matches

OverView of Shot Distribution

Team
Goals / Shots

25/32	7/15	21/26
17/28	0/5	23/33
70/78	17/23	45/48

23-Missed 14-Post 4-Blocked



Goalkeepers
Saves / Shots

8/22	4/7	3/23
10/30	9/13	16/35
20/67	11/25	9/63

1 JOHANNESSON P

3/5	0/1	1/2
3/8	1/1	2/7
5/14	2/5	3/13

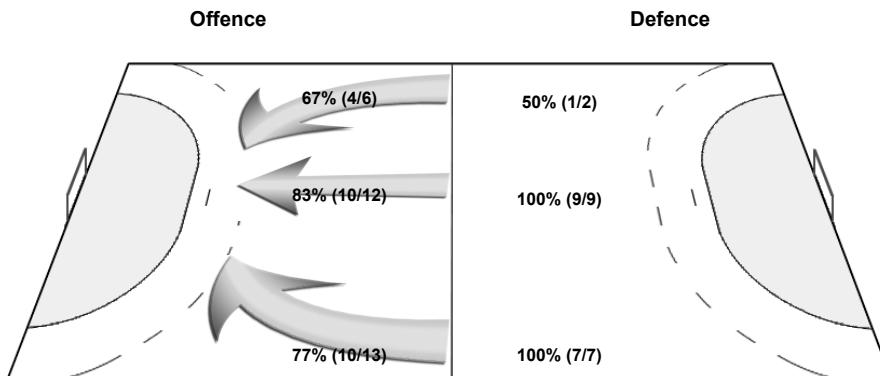
12 PALICKA A

1/13	2/3	1/14
6/20	7/8	11/22
12/42	7/17	6/38

30 THULIN T

4/4	2/3	1/7
1/2	1/1	2/5
3/10	2/3	0/12

Shot Distribution Fast Breaks

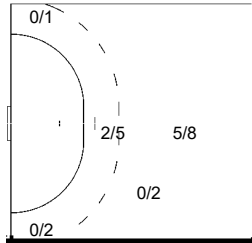


Cumulative Statistics

SWE - Sweden After 8 matches

Players Shot Distribution Goals / Shots

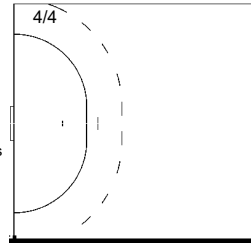
2 CARLSBOGARD Jonathan



3/5	1/3	2/2
0/1		2/2
4/5	1/2	2/2

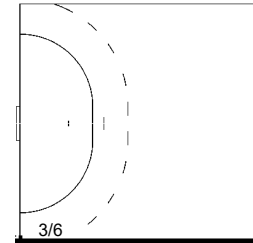
4-Missed 3-Post 1-Blocked
1/2 Fast Breaks 6/9 Breakthroughs
1/1 Over Circle

3 PERSSON Isak



1/1	1/1	
2/2		

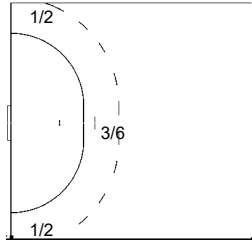
4 MELLEGARD Emil



1/1	1/2	1/1
1/2		
2/2	1/1	1/1

1-Missed 2-Post
5/7 Fast Breaks

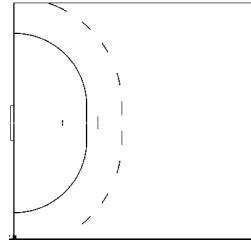
5 DARJ Max



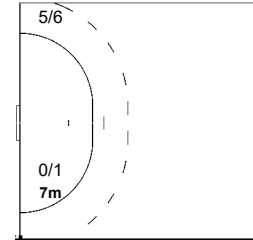
0/1	1/1	
3/3		
0/1	1/2	

2-Missed

6 MOLLER Felix



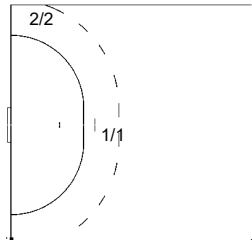
10 EKBERG Niclas



2/3		1/3
1/2		1/1
2/2		

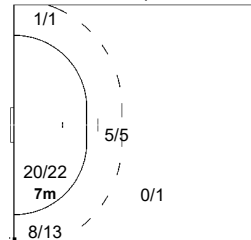
2/4 Fast Breaks

11 PETTERSSON Daniel



2/2		1/1

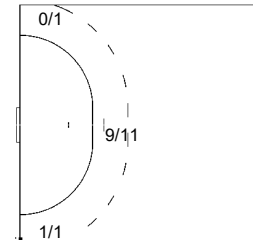
15 WANNE Hampus



5/5		7/7
2/4	0/2	7/8
13/14		7/8

1-Missed 1-Post
6/7 Fast Breaks
1/1 Over Circle

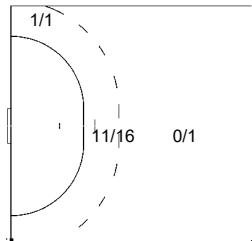
18 PETTERSSON Fredric



0/1	1/1	
		2/3
2/2	1/1	4/4

1-Missed

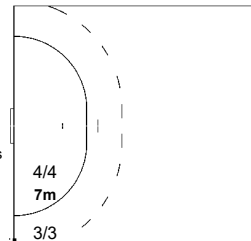
19 CLAAR Felix



1/1	1/3	3/3
1/3		0/1
5/6	2/3	3/3

1/1 Fast Breaks 3/4 Breakthroughs

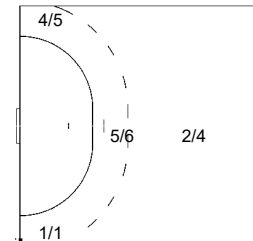
22 PELLAS Lucas



	0/1	1/1
1/1		1/1
2/2	1/1	1/1

0/1 Fast Breaks

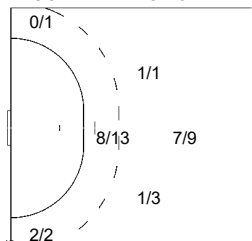
23 LAGERGREN Albin



1/1		1/1
1/3		
8/8	2/4	6/6

2-Missed 2-Post
4/4 Fast Breaks 3/7 Breakthroughs

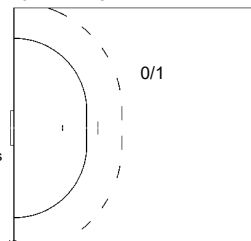
24 GOTTFRIDSSON Jim



4/4	0/1	3/5
5/7	0/1	8/10
7/8	1/1	5/5

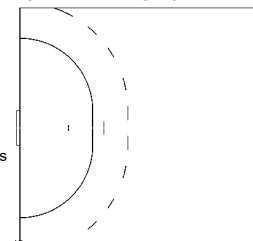
4-Missed 2-Blocked
14/18 Breakthroughs
0/1 Over Circle

26 PERSSON Linus



1/1		

28 EDVARDSSON Jonathan



1-Blocked
1/1 Breakthroughs